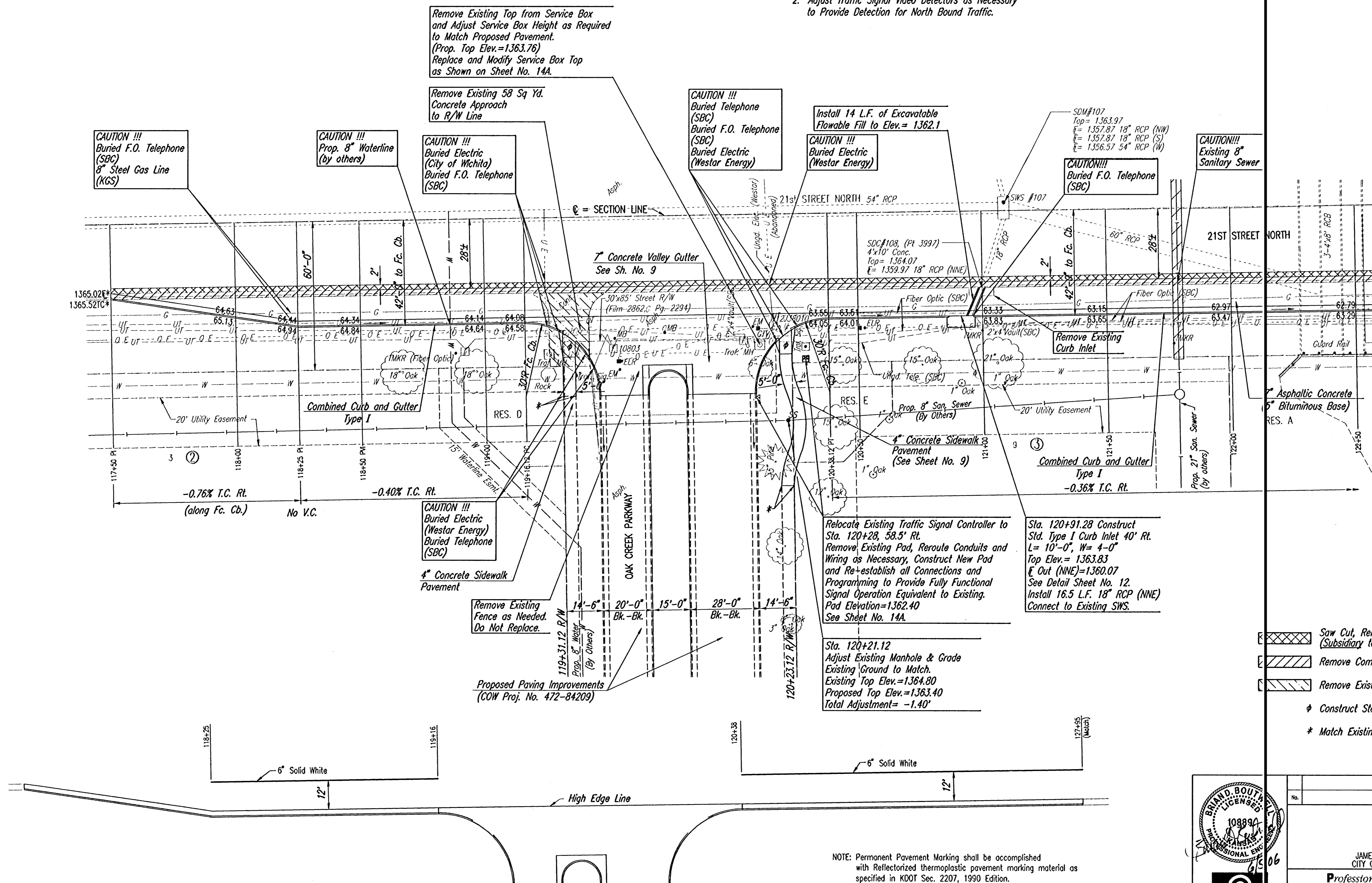


NOTES:

- Two-lane, two-way access to Oak Creek Parkway shall be maintained at all times by constructing entrance half at a time, or other method approved by the Engineer.
- Adjust Traffic Signal Video Detectors as Necessary to Provide Detection for North Bound Traffic.

SCALE: 1" = 20'



CAUTION !!!
Buried F.O. Telephone (SBC)
8" Steel Gas Line (KGS)

CAUTION !!!
Prop. 8" Waterline (by others)

CAUTION !!!
Buried Electric (City of Wichita)
Buried F.O. Telephone (SBC)

Remove Existing Top from Service Box and Adjust Service Box Height as Required to Match Proposed Pavement. (Prop. Top Elev.=1363.76)
Replace and Modify Service Box Top as Shown on Sheet No. 14A.

Remove Existing 58 Sq Yd. Concrete Approach to R/W Line

CAUTION !!!
Buried Telephone (SBC)
Buried F.O. Telephone (SBC)
Buried Electric (Westar Energy)

Install 14 L.F. of Excavatable Flowable Fill to Elev.= 1362.1

CAUTION !!!
Buried Electric (Westar Energy)

CAUTION!!!!
Buried F.O. Telephone (SBC)

CAUTION!!!!
Existing 8" Sanitary Sewer

CAUTION !!!
Buried Electric (Westar Energy)
Buried Telephone (SBC)

Relocate Existing Traffic Signal Controller to Sta. 120+28, 58.5' Rt.
Remove Existing Pad, Reroute Conduits and Wiring as Necessary, Construct New Pad and Re-establish all Connections and Programming to Provide Fully Functional Signal Operation Equivalent to Existing. Pad Elevation=1362.40
See Sheet No. 14A.

Sta. 120+91.28 Construct Std. Type I Curb Inlet 40' Rt.
L= 10'-0", W= 4'-0"
Top Elev.= 1363.83
E Out (NNE)=1360.07
See Detail Sheet No. 12.
Install 16.5 L.F. 18" RCP (NNE)
Connect to Existing SWS.

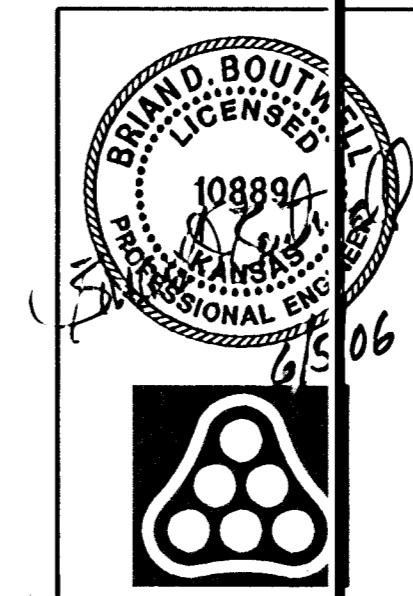
Sta. 120+21.12
Adjust Existing Manhole & Grade Existing Ground to Match.
Existing Top Elev.=1364.80
Proposed Top Elev.=1363.40
Total Adjustment= -1.40'

- Saw Cut, Remove and Replace Asphalt Surface (Subsidiary to 7" A.C. Pavt.)
- Remove Combined Curb and Gutter
- Remove Existing Concrete Pavt.
- Construct Std. Wheelchair Ramp
- Match Existing

MARKING PLAN

NOTE: Permanent Pavement Marking shall be accomplished with Reflectorized thermoplastic pavement marking material as specified in KDOT Sec. 2207, 1990 Edition.

Saved: 05-20-2006 8:29:02 AM by BJS
 Plot Scale: 1/2" = 20'-0" 05-20-2006 9:16:46 AM by BJS
 P:\2004\10488\103\10488-C-31117-50-124-50



No.	Revision	By	Date
OAK CREEK - PHASE 1 21ST ST. N. DECEL LANE PAVING PLAN 117+50 TO 122+50 JAMES L. ARMOUR, P.E. - CITY ENGINEER CITY OF WICHITA PROJECT NO. 472-84206 Professional Engineering Consultants, P.A. 303 S. TOPEKA • WICHITA, KANSAS 67202 316-262-2691 • FAX 316-262-3003			
Designed by	BDB, BLB	Job No.	35-04688-003
Drawn by	BJS, JMU	Date	October 2004
		Sheet	7 of 28