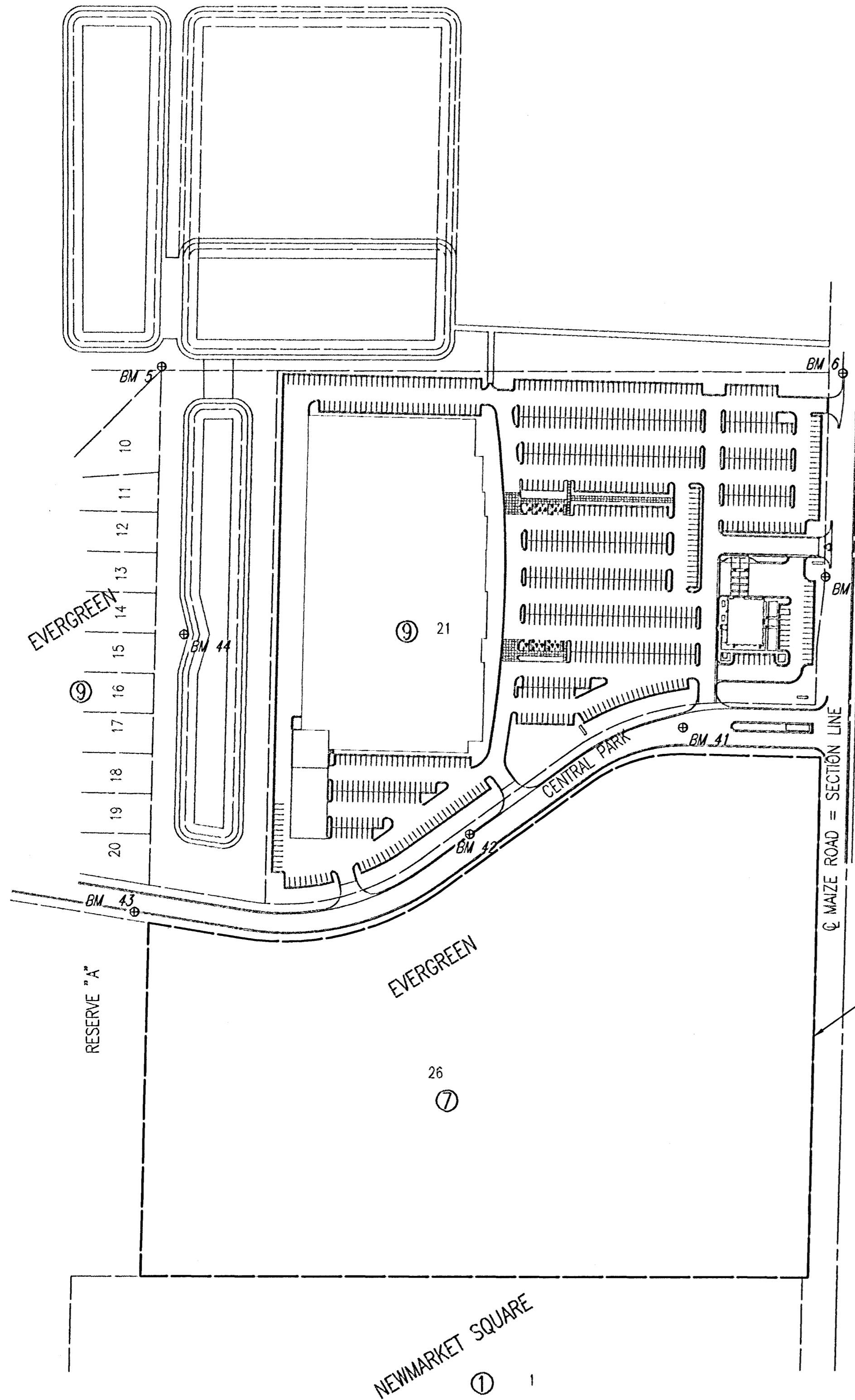


DSNR: BER OPER: SAW SCALE: 1"=150.00
 Q:\2004\04276\KEYMAP 02-17-2005 01:25:04 pm



BENEFIT DISTRICT

BENCH MARKS

- Benchmark #5 "T" Post Set near N.E. cor Evergreen, 5' N. of E-W fence line, and in line with fence to south.
 Elev.=161.83 C.O.W.
 =1349.23 M.S.L.
- Benchmark #6: Chiseled "d" on top back curb, W. curb line of Maize Rd. at beginning of curb 1/4 mile S. of 29th St. N.
 Elev.=164.515 C.O.W.
 1351.915 M.S.L.
- Benchmark #40: RR Spike in W. face of 2nd power pole N. of Central Park St., on W. side of Maize Rd.
 Elev.=164.57
- Benchmark #41: Chiseled "d" on W. end median in Central Park St. on W. side of Maize Rd.
 Elev.=163.32
- Benchmark #42: Chiseled "d" on N. top of curb Central Park St. Approx. 650' W. of Maize Rd.
 Elev.=164.03
- Benchmark #43: Chiseled "d" on S. top of curb Central Park St. 15' W. and 47' S. of SW Corner Lot 21, Block 9
 Elev.=165.00
- Benchmark #44: Chiseled "X" on N. rim S.S. Manhole (E. of 2 manholes), 1000' W. of @ Maize Rd. and 450' N. of @ Central Park St.
 Elev.=164.75

GENERAL NOTES

UNDERGROUND UTILITY SERVICE LINES AND OVERHEAD UTILITY POLE LINES ARE TO BE ADJUSTED AS NECESSARY BY OTHERS PRIOR TO CONSTRUCTION UNLESS THE PLANS SPECIFICALLY CALL FOR THEIR ADJUSTMENT BY THE CONTRACTOR. EXISTING UTILITIES AND THEIR LOCATION, AS SHOWN ON THE PLANS, REPRESENT THE BEST INFORMATION OBTAINABLE FOR DESIGN. LOCATION INFORMATION HAS BEEN OBTAINED FROM THE VARIOUS UTILITY COMPANIES AND IS EITHER FROM COMPANY RECORD DRAWINGS OR COMPANY PROVIDED FIELD LOCATIONS. THE CONTRACTOR WILL BE REQUIRED TO WORK AROUND EXISTING UTILITIES WITHIN THE RIGHT-OF-WAY WHICH DO NOT CONFLICT WITH PROPOSED CONSTRUCTION.

TREES AND SHRUBS IN PUBLIC RIGHT-OF-WAY WHICH ARE IN DIRECT CONFLICT WITH PROPOSED NEW CONSTRUCTION AND MARKED FOR REMOVAL SHALL BE REMOVED BY THE CONTRACTOR. OTHER TREES MAY BE REMOVED ONLY WITH THE ENGINEER'S APPROVAL. ROWS OF NURSERY STOCK TREES SHALL BE REMOVED PRIOR TO CONSTRUCTION BY THE OWNER/DEVELOPER (MR. LARRY CHAMBERS (316) 263-3201). TREES AND SHRUBS WHICH ARE NOT IN DIRECT CONFLICT WITH PROPOSED NEW CONSTRUCTION SHALL BE SAVED AND PROTECTED FROM DAMAGE.

RUBBLE FROM THE REMOVAL OF MISCELLANEOUS STRUCTURES SHALL BE DISPOSED OF ON SITES TO BE PROVIDED BY THE CONTRACTOR AND APPROVED AS NOTED BELOW.

ALL DISPOSAL SITES MUST BE APPROVED BY THE KANSAS DEPARTMENT OF HEALTH AND ENVIRONMENT. MATERIAL EITHER STOCKPILED OR DISPOSED OF IN A FLOOD PLAN WOULD REQUIRE A KANSAS STATE BOARD OF AGRICULTURE PERMIT. ANY MATERIAL DUMPED IN WATERS OF THE UNITED STATES OR WETLANDS IS SUBJECT TO U.S. CORPS OF ENGINEERS PERMITTING REGULATIONS. ANY MATERIAL BURIED OR STOCKPILED BEYOND APPROVED CONSTRUCTION LIMITS WOULD REQUIRE ADDITIONAL ARCHEOLOGICAL INVESTIGATIONS UNLESS BURIED IN A PREVIOUSLY APPROVED BORROW LOCATION.

CONTRACTOR SHALL SATISFY THEMSELVES OF SURFACE AND SUBSURFACE CONDITIONS PRIOR TO BIDDING.

CONTRACTOR SHALL PROVIDE A MINIMUM FORTY-EIGHT (48) HOUR ADVANCE NOTICE (EXCLUDING WEEKENDS AND HOLIDAYS) PRIOR TO BEGINNING ANY EXCAVATION, TO KANSAS ONE-CALL SYSTEM, A UTILITY LOCATION SERVICE, AT (316) 687-2470 TO REQUEST THE FOLLOWING UTILITY COMPANIES TO LOCATE / L EXISTING LINES WITHIN THE PROJECT AREA: K.G.S. GAS, WESTAR ELECTRIC, SBC, COX COMMUNICATIONS, CITY OF WICHITA SEWER MAINTENANCE AND CITY OF WICHITA WATER DEPARTMENT.

CONTRACTOR SHALL BE RESPONSIBLE FOR UTILITY RELOCATIONS NECESSITATED BY CONSTRUCTION AND SHALL COORDINATE THIS EFFORT WITH THE VARIOUS UTILITY COMPANIES AFFECTED.

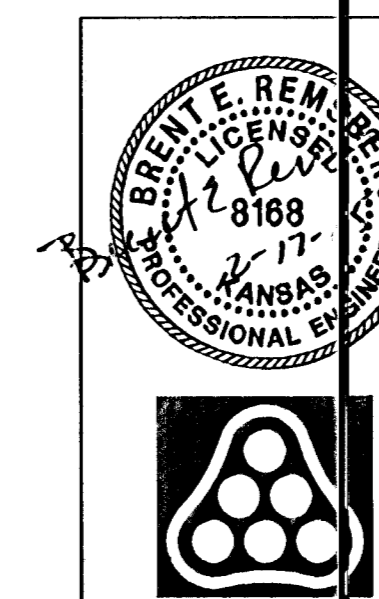
THE CONTRACTOR SHALL BE RESPONSIBLE FOR PRESERVING PROPERTY IRONS. THE CONTRACTOR WILL BE REQUIRED TO RE-ESTABLISH ANY PROPERTY IRONS WHICH ARE DAMAGED OR DESTROYED BY HIS CONSTRUCTION OPERATIONS. SUCH IRONS SHALL BE RE-ESTABLISHED BY A LICENSED LAND SURVEYOR IN ACCORDANCE WITH STATE LAWS.

THE CONTRACTOR SHALL ABIDE BY THE PROVISIONS OF THE STORM WATER POLLUTION PREVENTION PLAN DURING CONSTRUCTION AND SHALL EXECUTE A CONTRACTOR CERTIFICATION FOR PRIOR TO CONSTRUCTION. THE CONTRACTOR SHALL BE RESPONSIBLE FOR MAINTAINING EROSION CONTROL MEASURES UNTIL A WRITTEN RELEASE TRANSFER OF RESPONSIBILITY IS ISSUED BY THE OWNER.

ALL IRRIGATION IMPROVEMENTS DURING CONSTRUCTION SHALL BE REMOVED AND RESET/REPLACED IN KIND. THE CONTRACTOR SHALL CONTACT GEORGE SHERMAN (263-3201) TO COORDINATE TURNING OFF SUCH SYSTEMS PRIOR TO BEGINNING CONSTRUCTION. THIS WORK SHALL BE CONSIDERED SUBSIDIARY TO OTHER CONTRACT ITEMS.

UTILITY CONTACT INFORMATION

KC&E - MS. CHARLENE PINT 316-832-3121
 COX - MR. MARC HENDERSON 316-262-4270
 AQUILA - MR. CALVIN BRIGGS 316-941-1608
 WESTAR - MR. RANDY TRUITT 316-261-6512



Revision	By	Date

KEY MAP AND GENERAL NOTES

JAMES L. ARMOUR, P.E., ACTING CITY ENGINEER
 CITY OF WICHITA PROJECT NO. 472-84048

Professional Engineering Consultants, P.A.
 303 S. TOPEKA • WICHITA, KANSAS 67202
 316-262-2691 • FAX 316-262-3003

Designed by BER	Job No. 35-04276-0042	SH. 2 of 18
Drawn by SAW, TRO	Date JULY 2004	