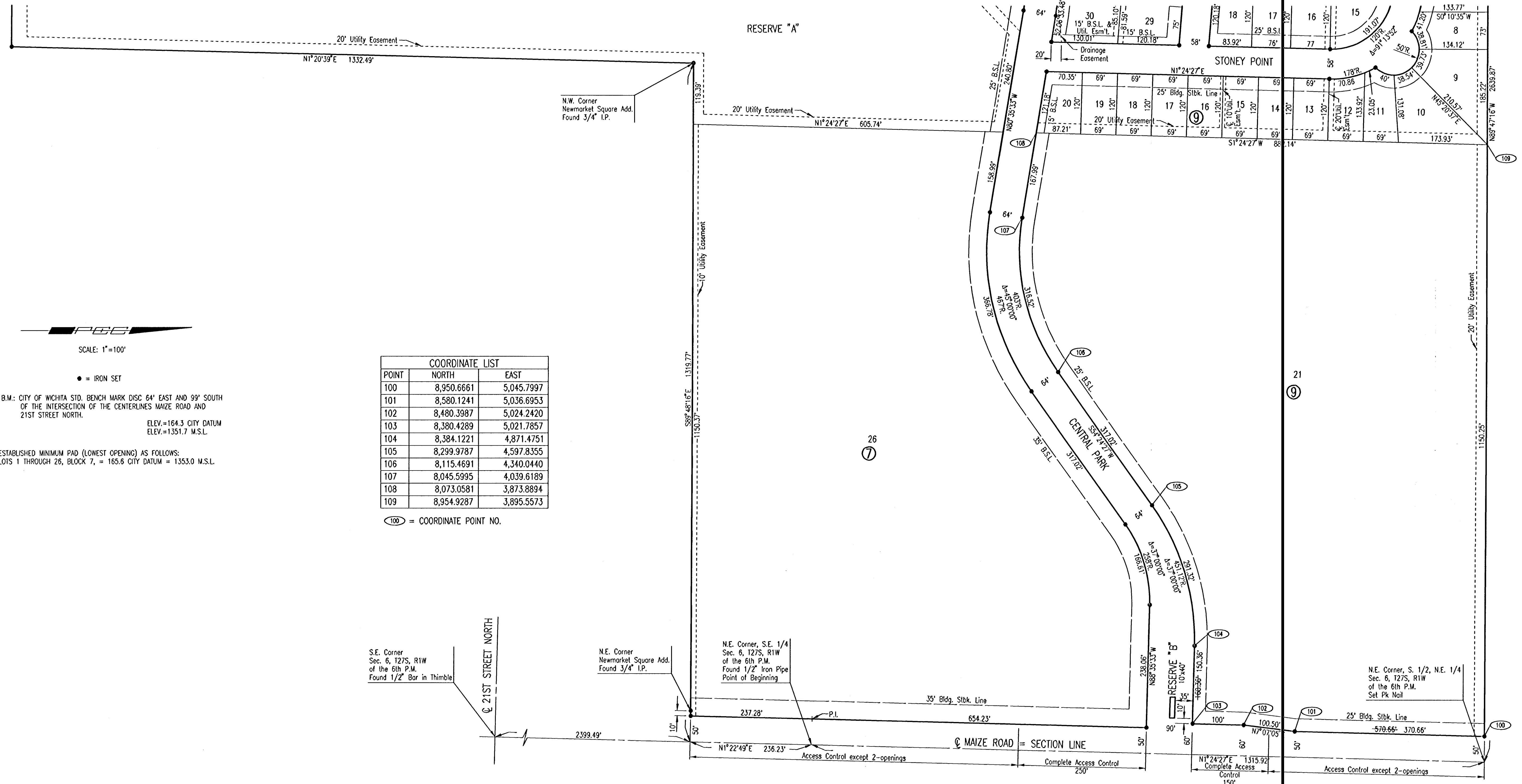


EVERGREEN

AN ADDITION TO WICHITA, SEDGWICK COUNTY, KANSAS



SCALE: 1"=100'

● = IRON SET

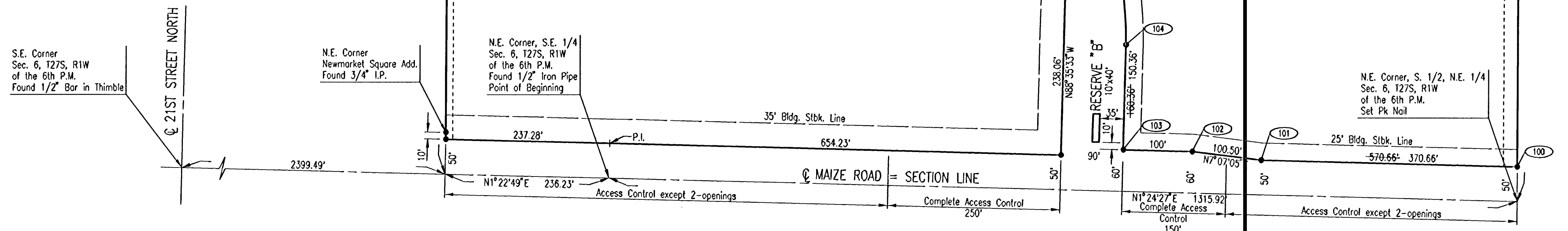
B.M.: CITY OF WICHITA STD. BENCH MARK DISC 64" EAST AND 99" SOUTH OF THE INTERSECTION OF THE CENTERLINES MAIZE ROAD AND 21ST STREET NORTH.

ELEV.=164.3 CITY DATUM
ELEV.=1351.7 M.S.L.

ESTABLISHED MINIMUM PAD (LOWEST OPENING) AS FOLLOWS:
LOTS 1 THROUGH 26, BLOCK 7, = 165.6 CITY DATUM = 1353.0 M.S.L.

POINT	NORTH	EAST
100	8,950.6661	5,045.7997
101	8,580.1241	5,036.6953
102	8,480.3987	5,024.2420
103	8,380.4289	5,021.7857
104	8,384.1221	4,871.4751
105	8,299.9787	4,597.8355
106	8,115.4691	4,340.0440
107	8,045.5995	4,039.6189
108	8,073.0581	3,873.8894
109	8,954.9287	3,895.5573

⑩ = COORDINATE POINT NO.



DSNR: BEER OPER: SAW SCALE: 1"=100.00
 Q:\2004\04276\Plat2 02-17-2005 08:28:50 am

No.	Revision	By	Date
NEWMARKET SQUARE CENTRAL PARK WIDENING PLAT (EAST PORTION) JAMES L. ARMOUR, P.E., ACTING CITY ENGINEER CITY OF WICHITA PROJECT NO. 472-84048 Professional Engineering Consultants, P.A. 303 S. TOPEKA • WICHITA, KANSAS 67202 316-262-2691 • FAX 316-262-3003			
Designed by	BEER	Job No.	35-04276-0042
Drawn by	SAW, TRO	Date	JULY 2004
			SH. 4 of 18