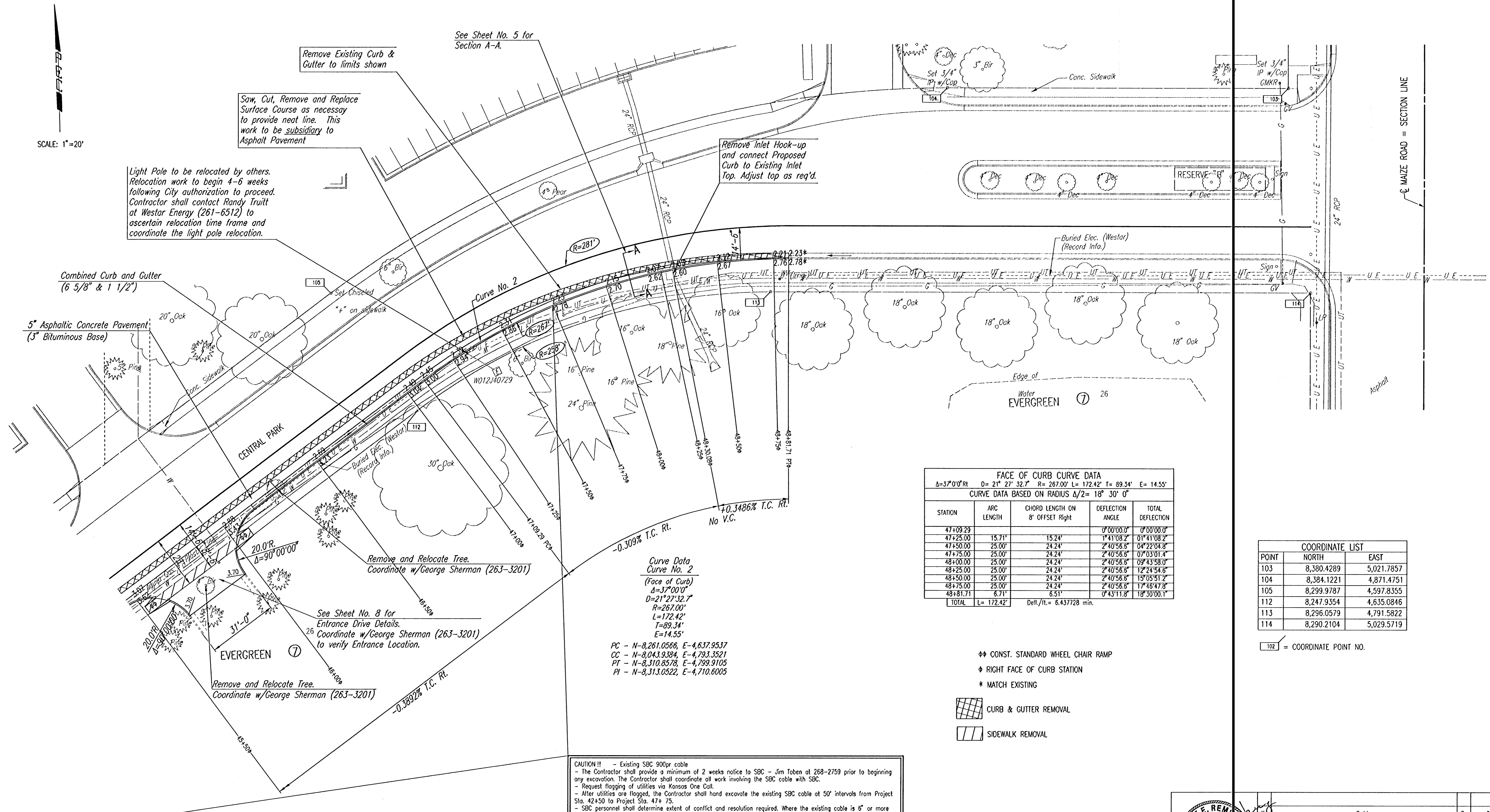


DSNR: BER OPER. SAW SCALE: 1"=20.00  
 J:\SENTOUT\2004\04276\2005-02-16 to City\DWG\07-Pavmt Wide Sta 45-49 02-17-2005 08:52:49 am

SCALE: 1"=20'



**FACE OF CURB CURVE DATA**

$\Delta=37^{\circ}00'00''$   $D=21^{\circ}27'32.7''$   $R=267.00'$   $L=172.42'$   $T=89.34'$   $E=14.55'$   
 CURVE DATA BASED ON RADIUS  $\Delta/2=18^{\circ}30'00''$

STATION	ARC LENGTH	CHORD LENGTH ON 8' OFFSET Right	DEFLECTION ANGLE	TOTAL DEFLECTION
47+09.29			0°00'00.0"	0°00'00.0"
47+25.00	15.71'	15.24'	1°41'08.2"	01°41'08.2"
47+50.00	25.00'	24.24'	2°40'56.6"	04°22'04.8"
47+75.00	25.00'	24.24'	2°40'56.6"	07°03'01.4"
48+00.00	25.00'	24.24'	2°40'56.6"	09°43'58.0"
48+25.00	25.00'	24.24'	2°40'56.6"	12°24'54.6"
48+50.00	25.00'	24.24'	2°40'56.6"	15°05'51.2"
48+75.00	25.00'	24.24'	2°40'56.6"	17°46'47.8"
48+81.71	6.71'	6.51'	0°43'11.8"	18°30'00.1"
<b>TOTAL</b>	<b>L=172.42'</b>		<b>Defl./ft.= 6.437728 min.</b>	

**COORDINATE LIST**

POINT	NORTH	EAST
103	8,380.4289	5,021.7857
104	8,384.1221	4,871.4751
105	8,299.9787	4,597.8355
112	8,247.9354	4,635.0846
113	8,296.0579	4,791.5822
114	8,290.2104	5,029.5719

102 = COORDINATE POINT NO.

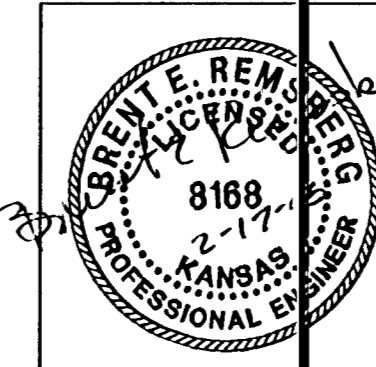
- ◆◆ CONST. STANDARD WHEEL CHAIR RAMP
- ◆ RIGHT FACE OF CURB STATION
- \* MATCH EXISTING
- CURB & GUTTER REMOVAL
- SIDEWALK REMOVAL

**Curve Data**  
**Curve No. 2**  
 (Face of Curb)  
 $\Delta=37^{\circ}00'00''$   
 $D=21^{\circ}27'32.7''$   
 $R=267.00'$   
 $L=172.42'$   
 $T=89.34'$   
 $E=14.55'$

PC - N-8,261.0566, E-4,637.9537  
 CC - N-8,043.9384, E-4,793.3521  
 PT - N-8,310.8578, E-4,799.9105  
 PI - N-8,313.0522, E-4,710.6005

**CAUTION!!!** - Existing SBC 900pr cable  
 - The Contractor shall provide a minimum of 2 weeks notice to SBC - Jim Toben at 268-2759 prior to beginning any excavation. The Contractor shall coordinate all work involving the SBC cable with SBC.  
 - Request flagging of utilities via Kansas One Call.  
 - After utilities are flagged, the Contractor shall hand excavate the existing SBC cable at 50' intervals from Project Sta. 42+50 to Project Sta. 47+75.  
 - SBC personnel shall determine extent of conflict and resolution required. Where the existing cable is 6" or more below the proposed subgrade excavation, the cable may remain in place and the Contractor shall protect it from damage. In locations where the existing cable is less than 6" below the proposed subgrade excavation, the Contractor shall provide a trench adjacent to the existing cable.  
 - Where a new trench is required for adjustment to the SBC cable, the trench width shall be as determined by SBC. The bottom of the trench shall be at least 12" below the proposed subgrade excavation.  
 - The existing SBC cable shall be moved into the new trench by SBC at the Contractor's expense.  
 - Backfilling of the SBC cable shall be performed by the Contractor.

All costs incurred for the above work shall be considered subsidiary to the price bid per lineal foot for "SBC Cable Protection".



Revision		By	Date
NEWMARKET SQUARE CENTRAL PARK WIDENING <b>PAVEMENT WIDENING PLAN</b> STA. 45+50 TO STA. 48+81.71 JAMES L. ARMOUR, P.E., ACTING CITY ENGINEER CITY OF WICHITA PROJECT NO. 472-84048			
<b>Professional Engineering Consultants, P.A.</b>			
303 S. TOPEKA • WICHITA, KANSAS 67202 316-262-2691 • FAX 316-262-3003			
Designed by	BER	Job No.	35-04276-0042
Drawn by	SAW, TRO	Date	JULY 2004
			SH. 7 of 18