

13-1

MH # 5749-279
Approx depth = 9.2 ft

MH # 5749-278
Approx depth = 10.4 ft

MH # 5749-280
Approx depth = 8.7 ft

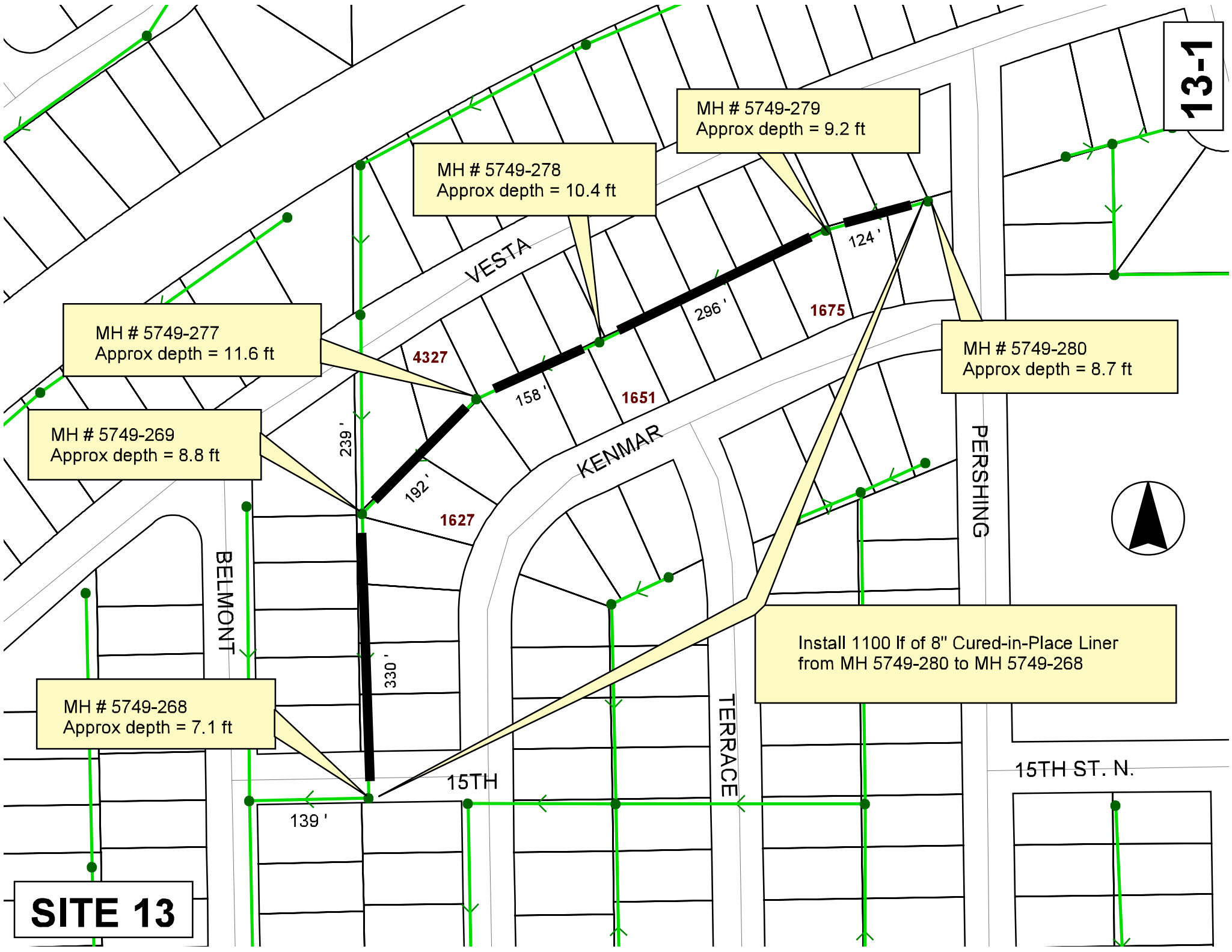
MH # 5749-277
Approx depth = 11.6 ft

MH # 5749-269
Approx depth = 8.8 ft

MH # 5749-268
Approx depth = 7.1 ft

Install 1100 lf of 8" Cured-in-Place Liner
from MH 5749-280 to MH 5749-268

SITE 13



13-2



Aerial View



BELMONT

VESTA

KENMAR

TERRACE

PERSHING

15TH

15TH

4327

1627

1651

1675

Television Inspection Master Report

5/24/2007
2:22 PM

US Structure: 5749-280 1687 N KENMAR ST **Date Insp:** 11/17/2004 **Basin:** EC02B
DS Structure: 5749-279 1675 N KENMAR ST **Dir Televised:** Upstream To Downstream

Pipe Information

Shape: Round Length Status: Project No.: F-253
Dia/Ht Width: 8 0 Material: VCP Index:
Length: 123.8 Slope: 0.097 Surface:

Inspection Information

Crew: 694 Percent Full: 10 Tape ID: DVD #0090
Weather: Rainy Purpose: TV Existing Line Counter Start:
Surface Cond: N/A Flow: Normal Flow Counter Stop:

Obs. #	VTR Counter	Distance	Location	Description	Rating	Obsrvd (gpm)	Est. (gpm)	Ratings Struct	Clean	Remain (gpm)
1		0.0	US Manhole	5749-280						0.000
2		3.0	Quad 2 / L-Rt	Broken Pipe	3		0.010	60	0	0.010
3		6.0	North	Wye Service	1		0.000	0	0	0.000
4		16.0	South	Break-In Conn	1		0.001	0	0	0.001
5		49.3	North	Wye Service	3		0.000	2	0	0.000
6		52.3	South	Wye Service	3		0.000	2	0	0.000
7		90.0	Mineral Deposits at Joint /	Needs bladed down prior to lining (by contractor)						
8		98.4	Invert	Sag begins						0.000
9		105.5	Crown	Infiltration	1		0.000	0	0	0.000
			.02 GPM / Mineral Deposits (or grease) at Joint / Needs bladed down prior to lining							
10		106.6	North	Break-In Conn	3		0.004	2	0	0.004
11		107.6	Invert	Sag ends (water never on lens)						
12		109.9	South	Break-In Conn	1		0.001	0	0	0.001
		125.3	DS Manhole	5749-279						0.000

NOTE: 1681 Kenmar may have two taps on the main

13-3

Television Inspection Master Report

5/24/2007
2:22 PM

US Structure: 5749-279 1675 N KENMAR ST **Date Insp:** 11/17/2004 **Basin:** EC02B
DS Structure: 5749-278 1651 N KENMAR ST **Dir Televised:** Upstream To Downstream

Pipe Information

Shape: Round Length Status: Project No.: F-253
Dia/Ht Width: 8 0 Material: VCP Index:
Length: 296.0 Slope: 0.101 Surface:

Inspection Information

Crew: 694 Percent Full: 10 Tape ID: DVD #0090
Weather: Rainy Purpose: TV Existing Line Counter Start:
Surface Cond: N/A Flow: Normal Flow Counter Stop:

Obs. #	VTR Counter	Distance	Location	Description	Rating	Obsrvd (gpm)	Est. (gpm)	Ratings		
								Struct	Clean	Remain (gpm)
1		0.0	US Manhole	5749-279						0.000
2		50.5	North	Break-In Conn	3		0.004	2	0	0.004
			4501 E VESTA / PACKED WITH ROOTS							
3		54.2	South	Wye Service	1		0.000	0	0	0.000
			1675 N KENMAR							
4		59.8	Crown	Crack-Radial	3		0.004	5	0	0.004
5		112.3	North	Wye Service	1		0.000	0	0	0.000
			4427 E VESTA							
			(NOTE: 107' to 117' had heavy grease on the crown)							
6		116.9	South	Break-In Conn	1		0.001	0	0	0.001
			1669 N KENMAR / PVC							
7		170.4	North	Wye Service	1		0.000	0	0	0.000
			4421 E VESTA							
8		172.5	South	Wye Service	1		0.000	0	0	0.000
			1663 N KENMAR							
9		177.4	Invert	Crack-Horizontal	3		0.004	5	0	0.004
10		184.2	Quad 2 / L-Rt	Crack-Horizontal	3		0.004	5	0	0.004
11		191.8	Quad 3 / L-Lt	Crack-Horizontal	3		0.004	5	0	0.004
12		196.2	Quad 4 / U-Lt	Crack-Radial	3		0.004	5	0	0.004
13		206.2	Quad 4 / U-Lt	Roots	3		0.008	5	8	0.008
14		209.9	Quad 4 / U-Lt	Roots	3		0.008	5	8	0.008
15		225.8	Quad 1 / U-Rt	Broken Pipe	3		0.010	60	0	0.010
16		227.4	North	Wye Service	3		0.000	2	0	0.000
			4415 E VESTA							
17		230.2	South	Break-In Conn	1		0.001	0	0	0.001
			1657 N KENMAR / PVC							
18		231.8	Crown	Roots	3		0.008	5	8	0.008
19		237.1	Quad 2 / L-Rt	Roots	3		0.008	5	8	0.008
20		240.4	Quad 1 / U-Rt	Roots	3		0.008	5	8	0.008
21		282.3	North	Wye Service	3		0.000	2	0	0.000
			4407 E VESTA / ROOTS							
22		283.7	Quad 1 / U-Rt	Roots	4		0.010	10	25	0.010
23		285.1	South	Break-In Conn	1		0.001	0	0	0.001
			1651 N KENMAR							
24		295.3	Quad 4 / U-Lt	Roots	3		0.008	5	8	0.008
25		297.5	DS Manhole	5749-278	2					0.000
			1651 N KENMAR / PIECE OF TILE MISSING IN THE TROUGH.							

13-4

Television Inspection Master Report

5/24/2007
2:22 PM

US Structure: 5749-278 1651 N KENMAR ST **Date Insp:** 11/18/2004 **Basin:** EC02B
DS Structure: 5749-277 4327 E VESTA ST **Dir Televised:** Downstream To Upstream

Pipe Information

Shape: Round Length Status: Project No.: F-253
Dia/Ht Width: 8 0 Material: VCP Index:
Length: 158.2 Slope: 0.101 Surface:

Inspection Information

Crew: 694 Percent Full: 10 Tape ID: DVD #0090
Weather: Rainy Purpose: TV Existing Line Counter Start:
Surface Cond: N/A Flow: Normal Flow Counter Stop:

Obs. #	VTR Counter	Distance	Location	Description	Rating	Obsrvd (gpm)	Est. (gpm)	Ratings Struct	Clean	Remain (gpm)
1		0.0	DS Manhole	5749-277 / WE ARE TELEVISIONING AGAINST THE FLOW						
2		22.1	South	Break-In Conn	1		0.001	0	0	0.001
3		25.4	North	Wye Service	3		0.000	2	0	0.000
4		89.1	North	Break-In Conn	3		0.004	2	0	0.004
5		122.8	South	Wye Service	1		0.000	0	0	0.000
6		126.0	North	Wye Service	1		0.000	0	0	0.000
7		133.0	Offset Joint / Gapped Joint							
8		134.1	Invert	Sag begins						
9		151.3	Invert	Sag ends (water never up to lens)						
		160.0	US Manhole	5749-278	2					

Pipe had grease on the crown

13-5

Television Inspection Master Report

5/24/2007
2:22 PM

US Structure: 5749-277 4327 E VESTA ST **Date Insp:** 11/18/2004 **Basin:** EC02B
DS Structure: 5749-269 1627 N KENMAR DR **Dir Televised:** Upstream To Downstream

Pipe Information

Shape: Round Length Status: Project No.: F-253
Dia/Ht Width: 8 Material: VCP Index:
Length: 192.0 Slope: 0.099 Surface:

Inspection Information

Crew: 694 Percent Full: 10 Tape ID: DVD #0090
Weather: Rainy Purpose: TV Existing Line Counter Start:
Surface Cond: N/A Flow: Normal Flow Counter Stop:

Obs. #	VTR Counter	Distance	Location	Description	Rating	Obsrvd (gpm)	Est. (gpm)	Ratings Struct	Clean	Remain (gpm)
1		0.0	US Manhole	5749-277						0.000
2		25.0	North	Break-In Conn	1		0.001	0	0	0.001
			4327 E VESTA / PVC							
3		45.5	North	Wye Service	1		0.000	0	0	0.000
			SEALED OFF							
4		48.5	South	Wye Service	1		0.000	0	0	0.000
			SEALED OFF							
5		62.3	Crown	Broken Pipe	3		0.010	60	0	0.010
6		64.3	North	Break-In Conn	3		0.004	2	0	0.004
			4321 E VESTA / PACKED WITH ROOTS							
7		66.2	Crown	Broken Pipe	1		0.004	30	0	0.004
			REPAIR HAS BEEN MADE							
8		68.1	South	Extended Tap	1		0.002	0	0	0.002
			1633 N KENMAR / PVC							
9		71.6	Invert	Crack-Horizontal	3		0.004	5	0	0.004
10		146.1	North	Wye Service	1		0.000	0	0	0.000
			4321 E VESTA							
11		149.5	South	Break-In Conn	3		0.004	2	0	0.004
			1627 N KENMAR / FULL OF ROOTS							
12		155.1	Quad 2 / L-Rt	Roots	3		0.008	5	8	0.008
13		156.6	Crown	Crack-Horizontal	3		0.004	5	0	0.004
14		161.0	Crown	Crack-Horizontal	3		0.004	5	0	0.004
15		163.0	Crown	Crack-Horizontal	3		0.004	5	0	0.004
16		166.0	Crown	Crack-Horizontal	3		0.004	5	0	0.004
			ALSO ROOTS AT THIS LOCATION							
17		175.1	Quad 3 / L-Lt	Roots	3		0.008	5	8	0.008
18		177.9	Crown	Crack-Horizontal	3		0.004	5	0	0.004
			ROOTS AT THE JOINT							
19		181.2	Crown	Crack-Horizontal	3		0.004	5	0	0.004
			ROOTS AT THE JOINT							
20		185.8	Invert	Sag begins						0.000
21		187.3	Invert	Sag ends						0.000
22		193.3	DS Manhole	5749-269						0.000

Television Inspection Master Report

5/24/2007
2:22 PM

US Structure: 5749-269 1627 N KENMAR DR **Date Insp:** 2/1/2007 **Basin:** EC02B
DS Structure: 5749-268 1563 N KENMAR ST **Dir Televised:** Upstream To Downstream

Pipe Information

Shape: Round Length Status: Project No.: F-253
Dia/Ht Width: 8 0 Material: VCP Index:
Length: 329.1 Slope: 0.401 Surface:

Inspection Information

Crew: 694 Percent Full: Tape ID: DVD #0243
Weather: Sunny Purpose: TV Existing Line Counter Start:
Surface Cond: Trees Flow: Normal Flow Counter Stop:

Obs. #	VTR Counter	Distance	Location	Description	Rating	Obsrvd (gpm)	Est. (gpm)	Ratings Struct	Clean	Remain (gpm)
1		0.0	US Manhole	5749-269	1		0.000	0	0	0.000
FOOTAGE FOR OBSERVATIONS ARE FROM USMH										
2		23.0		Sealed Off Wye East	1		0.000	0	0	0.000
3		47.0	Upper Left	Crack-Radial	3		0.004	5	0	0.004
4		47.0	East	Break-In Conn	1		0.001	0	0	0.001
1621 N. Kenmar										
5		86.0		Sealed Off Wye East	1		0.000	0	0	0.000
6		97.0	Lower Left	Broken Pipe	3		0.010	60	0	0.010
7		101.0	Upper Left	Crack-Radial	3		0.004	5	0	0.004
8		112.0	Upper Left	Broken Pipe	3		0.010	60	0	0.010
9		137.0	Upper Right	Broken Pipe	3		0.010	60	0	0.010
10		146.0	East	Break-In Conn	1		0.001	0	0	0.001
1615 Kenmar / PVC										
11		161.0		Grease	3		0.000	0	5	0.000
12		161.0	West	Break-In Conn	5		0.010	400	0	0.010
FACES 1616 NORTH BELMONT POSSIBLY ABANDONED / PACKED WITH ROOTS										
13		200.0	Crown	Crack-Horizontal	3		0.004	5	0	0.004
14		207.0	East	Wye Service	5		0.000	400	0	0.000
ROOTS 1607 NORTH KENMAR										
15		208.0	Upper Right	Broken Pipe	3		0.010	60	0	0.010
16		208.5	West	Break-In Conn	2		0.002	0	0	0.002
1610 N. Belmont (dye tested and is active)										
17		266.0	Upper Left	Crack-Horizontal	3		0.004	5	0	0.004
18		267.0	East	Wye Service	3		0.000	0	0	0.000
ROOTS 1601 NORTH KENMAR / offset 1 st joint outside of main										
19		275.0	Upper Left	Crack-Horizontal	3		0.004	5	0	0.004
20		278.0	Crown	Crack-Horizontal	3		0.004	5	0	0.004
21		329.0	DS Manhole	5749-268	1		0.000	0	0	0.000

13-7