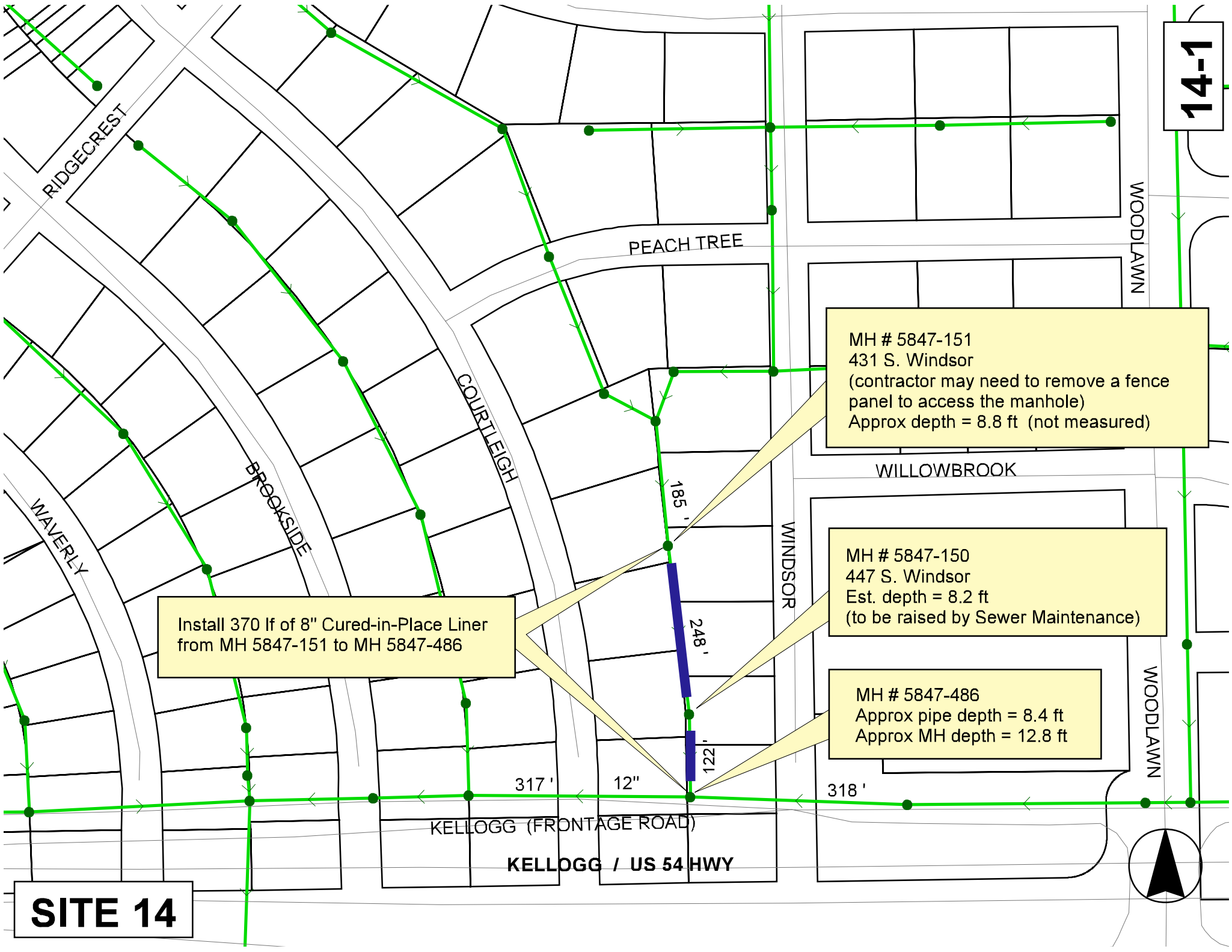


14-1



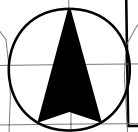
Install 370 lf of 8" Cured-in-Place Liner from MH 5847-151 to MH 5847-486

MH # 5847-151  
 431 S. Windsor  
 (contractor may need to remove a fence panel to access the manhole)  
 Approx depth = 8.8 ft (not measured)

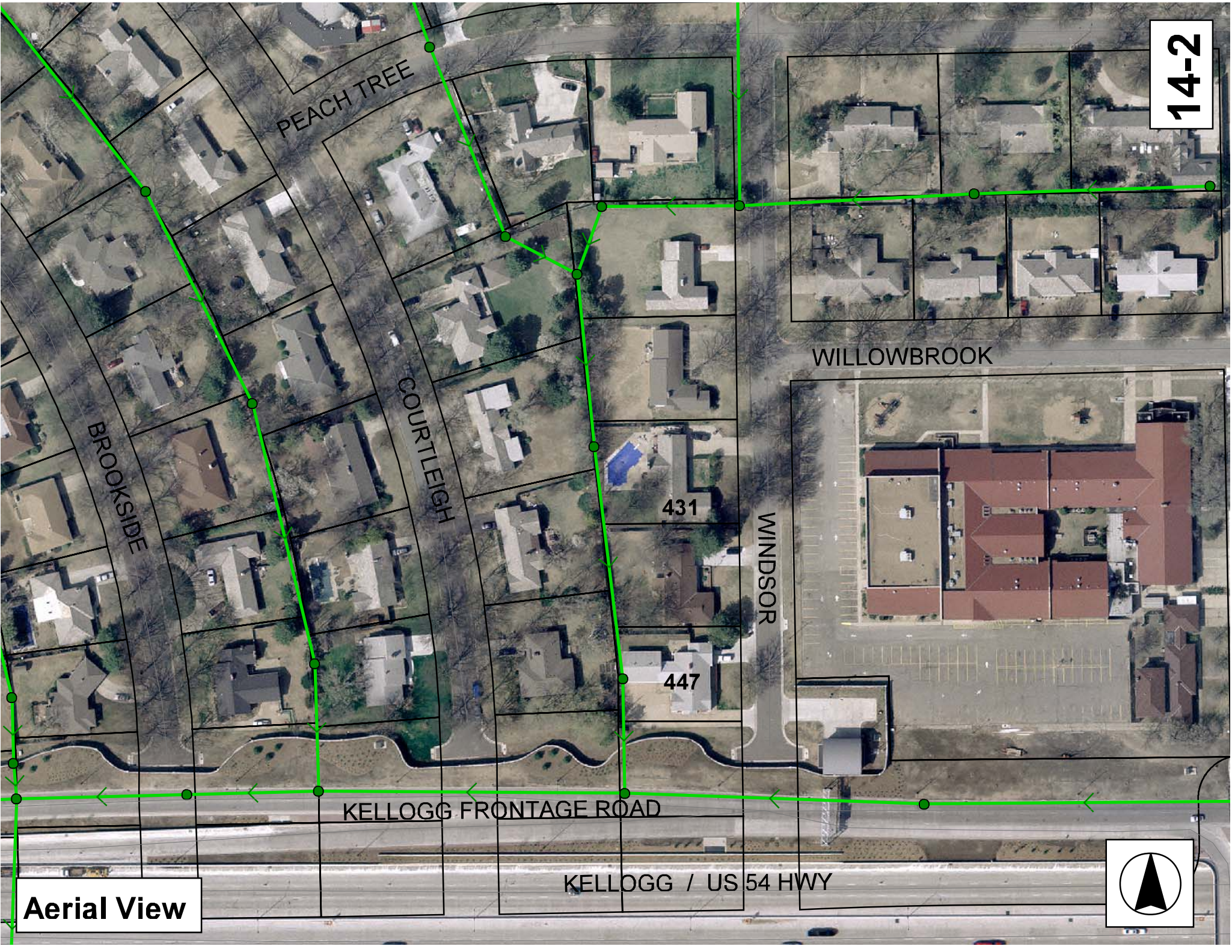
MH # 5847-150  
 447 S. Windsor  
 Est. depth = 8.2 ft  
 (to be raised by Sewer Maintenance)

MH # 5847-486  
 Approx pipe depth = 8.4 ft  
 Approx MH depth = 12.8 ft

**SITE 14**



14-2



PEACH TREE

BROOKSIDE

COURTLEIGH

WILLOWBROOK

WINDSOR

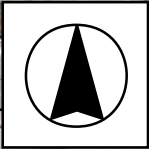
KELLOGG FRONTAGE ROAD

KELLOGG / US 54 HWY

431

447

Aerial View



# Television Inspection Master Report

5/30/2007  
1:09 PM

US Structure: 5847-151  
DS Structure: 5847-150

431 S WINDSOR RD

Date Insp: 5/17/2002

Basin: E04F

Dir Televised: Upstream To Downstream

## Pipe Information

Shape: Round Length Status: Project No.: F-261  
Dia/Ht Width: 8 0 Material: VCP Index:  
Length: 247.8 Slope: 0.403 Surface:

## Inspection Information

Crew: 694 Percent Full: 15 Tape ID: V-3364  
Weather: Cloudy Purpose: TV Existing Line Counter Start: 10:36  
Surface Cond: Trees & Fences Flow: Normal Flow Counter Stop:

Obs. #	VTR Counter	Distance	Location	Description	Rating	Obsrvd (gpm)	Est. (gpm)	Ratings Struct	Clean	Remain (gpm)
1		0.0	US Manhole	5847-151						
Manhole is located under a fence at 431 S. Windsor / Contractor may need to remove a fence panel to access the manhole.										
2		19.0	East	Pipe Seal						
3		22.0	West	Pipe Seal						
4		54.0	Horizontal Cracks	Broken Pipe	4		0.010	60	0	0.010
5		63.0	East	Break-In Conn	1		0.001	0	0	0.001
431 S. WINDSOR / possibly loose tile up inside this service										
6		82.0	Crown	Crack-Horizontal	3		0.004	5	0	0.004
7		86.0	East	Break-In Conn	1		0.001	0	0	0.001
439 S. WINDSOR / Full of Roots										
8		140.0	West	Break-In Conn	1		0.001	0	0	0.001
436 S. COURTLEIGH										
9		149.0	East	Pipe Seal						0.000
10		152.0	West	Pipe Seal						
11		195.0	East	Break-In Conn	1		0.001	0	0	0.001
439 S. WINDSOR										
12		249.0	Crown	Crack-Radial	3		0.004	5	0	0.004
13		251.0	DS Manhole	5847-150						0.000

Pipe in fairly good condition. 2 bad crack areas. Line this with the segment downstream.

14-3

# Television Inspection Master Report

5/30/2007  
1:09 PM

5/17/2002

E04F

US Structure: 5847-150  
DS Structure: 5847-486

Date Insp:   
Dir Televised: Upstream To Downstream Basin:

## Pipe Information

Shape: Round	Length Status:	Project No.: F-261
Dia/Ht Width: 8	Material: VCP	Index:
Length: 121.4	Slope: 0.400	Surface:

## Inspection Information

Crew: 694	Percent Full: 15	Tape ID: V-3364
Weather: Sunny	Purpose: TV Existing Line	Counter Start: 26:45
Surface Cond: Trees & Fences	Flow: Normal Flow	Counter Stop:

Obs. #	VTR Counter	Distance	Location	Description	Rating	Obsrvd (gpm)	Est. (gpm)	Ratings		
								Struct	Clean	Remain (gpm)
1		0.0	US Manhole	5847-150			0.000	0	0	0.000
2		21.0	Quad 4 / U-Lt	Crack-Radial	3		0.004	5	0	0.004
3		25.0	East	Wye Service	1		0.000	0	0	0.000
447 S. WINDSOR										
4		27.0	Crown	Broken Pipe	1		0.004	30	0	0.004
5		28.0	West	Wye Service	1		0.000	0	0	0.000
446 S. COURTLEIGH										
6		28.0	Crown	Crack-Horizontal	3		0.004	5	0	0.004
7		33.0	Crown	Crack-Horizontal	3		0.004	5	0	0.004
8		36.0	Crown	Crack-Radial	3		0.004	5	0	0.004
9		42.0	Crown	Crack-Radial	3		0.004	5	0	0.004
10		45.0	Crown	Crack-Horizontal	3		0.004	5	0	0.004
11		48.0	Quad 3 / L-Lt	Crack-Horizontal	2		0.002	2	0	0.002
12		52.0	Quad 2 / L-Rt	Crack-Horizontal	3		0.004	5	0	0.004
13		54.0	Quad 3 / L-Lt	Crack-Horizontal	3		0.004	5	0	0.004
14		58.0	Crown	Crack-Horizontal	3		0.004	5	0	0.004
15		60.0	Crown	Crack-Horizontal	3		0.004	5	0	0.004
16		65.0	Quad 4 / U-Lt	Broken Pipe	5		0.060	100	0	0.060
17		122.0	DS Manhole	5847-486	0		0.000	0	0	0.000

This is a new manhole, constructed as part of the Kellogg Freeway improvements.