

2-2

ONEIDA

3615

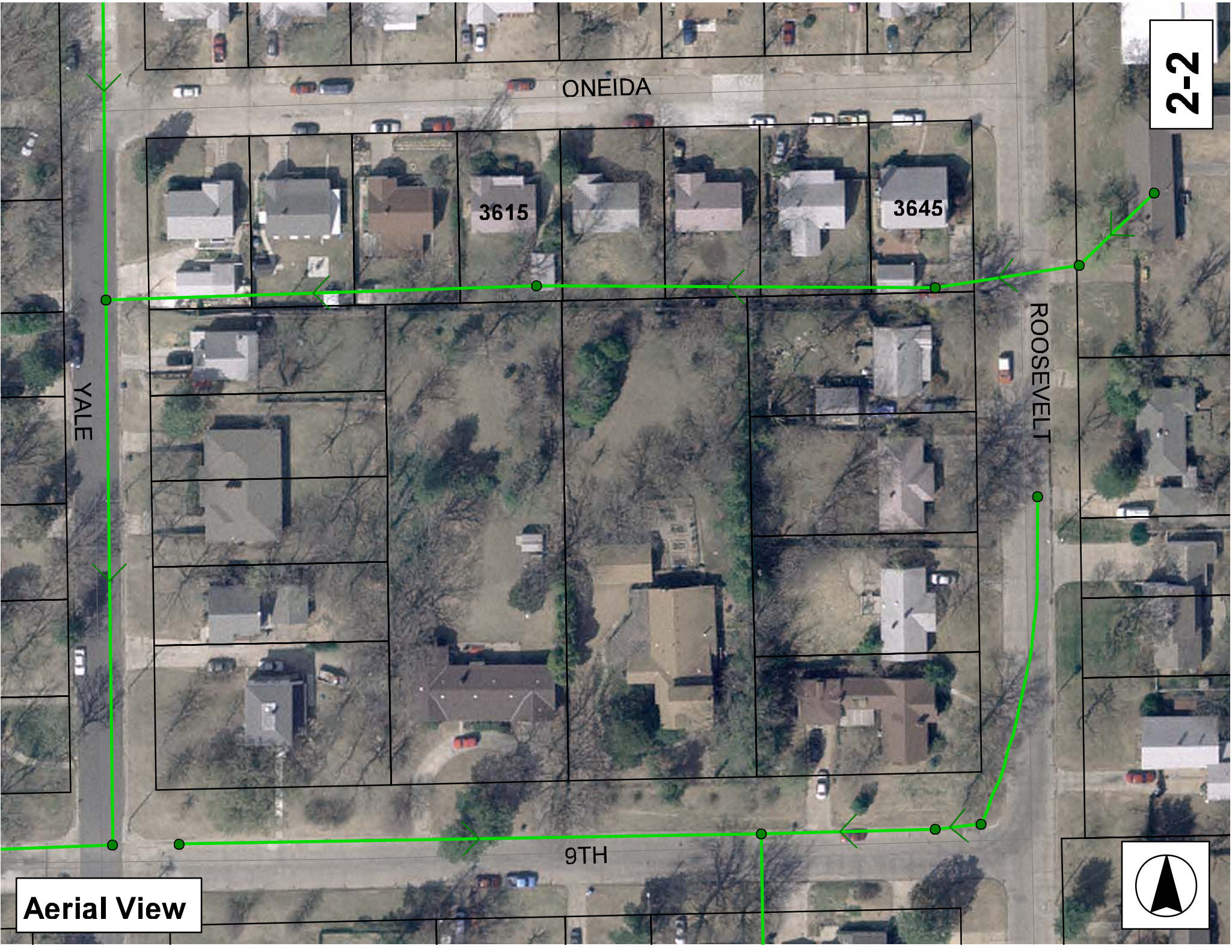
3645

YALE

ROOSEVELT

9TH

Aerial View



Television Inspection Master Report

5/2/2007
2:33 PM

US Structure: 5748-220
DS Structure: 5748-219

3645 E ONEIDA ST
3615 E ONEIDA ST

Date Insp: 3/22/2006
Dir Televised: Downstream To Upstream

Basin: EC02A

Pipe Information

E-182

Shape: Round Length Status: Project No.:
Dia/Ht Width: 8 0 Material: VCP Index:
Length: 242.4 Slope: 0.198 Surface:

Inspection Information

Crew: 692 Percent Full: 10 Tape ID: 5958
Weather: Sunny Purpose: TV Existing Line Counter Start: 1.00.9
Surface Cond: N/A Flow: Normal Flow Counter Stop: 1.16.02

Obs. #	VTR Counter Comment	Distance	Location	Description	Rating	Obsrvd (gpm)	Est. (gpm)	Ratings Struct	Clean	Remain (gpm)	
1		0.0	DS Manhole	5748-219 / TV AGAINST THE FLOW		0.000	0.000	0	0	0.000	
2		27.0		Sealed Off Wye North	1	0.000	0.000	0	0	0.000	
3		43.0	North	Wye Service	1	0.000	0.000	0	0	0.000	
	3619 E. Oneida - live connection										
4		46.0	Joint	Roots	2	0.004	0.004	2	4	0.004	
5		47.0	Joint	Roots / broken pipe	3	0.008	0.008	5	8	0.008	
6		57.0	Crown	Broken Pipe	2	0.008	0.008	44	0	0.008	
7		63.0	Joint	Roots	3	0.008	0.008	5	8	0.008	
8		72.0	Joint	Roots	2	0.004	0.004	2	4	0.004	
9		75.0	Joint	Roots	3	0.008	0.008	5	8	0.008	
10		81.0	Joint	Roots	2	0.004	0.004	2	4	0.004	
11		88.0	North	Wye Service	3	0.000	0.000	2	0	0.000	
	3623 E. Oneida - live connection / FULL OF ROOTS										
12		93.0	Joint	Roots	3	0.008	0.008	5	8	0.008	
13		95.0	Joint	Roots	3	0.008	0.008	5	8	0.008	
14		101.0	Joint	Roots	2	0.004	0.004	2	4	0.004	
15		105.0	North / ball of roots	Possibly Sealed Off Wye	1	0.000	0.000	0	0	0.000	
16		113.0	Joint	Roots	2	0.004	0.004	2	4	0.004	
17		125.0	Joint	Roots	2	0.004	0.004	2	4	0.004	
18		132.0	Invert	Broken Pipe	3	0.010	0.010	60	0	0.010	
19		135.0	Crown	Broken Pipe	3	0.010	0.010	60	0	0.010	
20		145.0		Sealed Off Wye North	1	0.000	0.000	0	0	0.000	
21		164.0	Crown	Broken Pipe	4	0.030	0.030	78	0	0.030	
22		165.0	North	Break-In Conn	2	0.002	0.002	0	0	0.002	
	3639 E. Oneida - live connection / roots										
23		170.0	Joint	Roots	2	0.004	0.004	2	4	0.004	
24		174.0	Crown	Broken Pipe	3	0.010	0.010	60	0	0.010	
25		179.0	South	Break-In Conn	1	0.001	0.001	0	0	0.001	
	1015 Roosevelt - live connection										
26		180.0	South	Break-In Conn	1	0.001	0.001	0	0	0.001	
	1015 Roosevelt - live connection										
27		188.0	Crown	Broken Pipe	3	0.010	0.010	60	0	0.010	
28		201.0		Sealed Off Wye North	1	0.000	0.000	0	0	0.000	
29		218.0	North	Wye Service	1	0.000	0.000	0	0	0.000	
	3645 E. Oneida - live connection										
30		226.0	Joint	Roots	2	0.004	0.004	2	4	0.004	
		242.0	US Manhole	5748-220							

Television Inspection Master Report

5/2/2007
2:33 PM

US Structure: 5748-219
DS Structure: 5748-206

3615 E ONEIDA ST
3603 E ONEIDA ST

Date Insp: 3/22/2006
Dir Televised: Upstream To Downstream

Basin: EC02A

Pipe Information

E-182

Shape: Round Length Status: Project No.:
Dia/Ht Width: 8 0 Material: VCP Index:
Length: 244.4 Slope: 3.180 Surface:

Inspection Information

Crew: 692 Percent Full: 10 Tape ID: 5958
Weather: Sunny Purpose: TV Existing Line Counter Start: 43.31
Surface Cond: N/A Flow: Normal Flow Counter Stop: 1.00.9

Obs. VTR

#	Counter	Distance	Location	Description	Rating	Obsrvd (gpm)	Est. (gpm)	Ratings		
								Struct	Clean	Remain (gpm)
1		0.0	US Manhole	5748-219	1		0.000	0	0	0.000
2		27.0	North	Wye Service	2		0.000	0	0	0.000
3615 E. Oneida - live connection / roots										
3		31.0	Quad 3 / L-Lt	Crack-Radial	3		0.004	5	0	0.004
4		38.0		Sealed Off Wye North	1		0.000	0	0	0.000
5		60.0	Joint	Roots	2		0.004	2	4	0.004
6		63.0	Joint	Roots	3		0.008	5	8	0.008
7		66.0	Joint	Roots	3		0.008	5	8	0.008
8		70.0	Joint	Roots	4		0.010	10	25	0.010
		72.0	North	Wye / Roots (televisor did not stop or mention this)						
9		73.0	Joint	Roots	4		0.010	10	25	0.010
10		76.0	Joint	Roots	4		0.010	10	25	0.010
11		80.0	Joint	Roots	4		0.010	10	25	0.010
12		83.0	Joint	Roots	3		0.008	5	8	0.008
13		86.0	Joint	Roots	4		0.010	10	25	0.010
14		90.0	Joint	Roots	4		0.010	10	25	0.010
15		103.0	North	Wye Service	1		0.000	0	0	0.000
3611 E. Oneida - live connection										
16		122.0	North	Wye Service	1		0.000	0	0	0.000
3607 E. Oneida - live connection										
17		149.0	Joint	Roots	2		0.004	2	4	0.004
18		154.0	Joint	Roots	2		0.004	2	4	0.004
19		156.0		Sealed Off Wye North	1		0.000	0	0	0.000
20		157.0	Crown	Crack-Horizontal	3		0.004	5	0	0.004
21		174.0	South	Extended Tap	3		0.002	2	0	0.002
1024 S. Yale - live connection / PVC / sticks into main about 1"										
22		182.0	Joint	Roots	2		0.004	2	4	0.004
23		201.0	North	Wye Service	2		0.000	0	0	0.000
3603 E. Oneida - live connection / roots										
24		203.0	Joint	Roots	2		0.004	2	4	0.004
25		208.0	Joint	Roots	2		0.004	2	4	0.004
26		212.0		Sealed Off Wye North	1		0.000	0	0	0.000
27		228.0	Joint	Roots	2		0.004	2	4	0.004
28		238.0	Joint	Roots	3		0.008	5	8	0.008
29		240.0	Joint	Roots	3		0.008	5	8	0.008
30		241.0	DS Manhole	5748-206 (inside drop) (incoming pipe is 2 to 3 ft above N/S flow)						