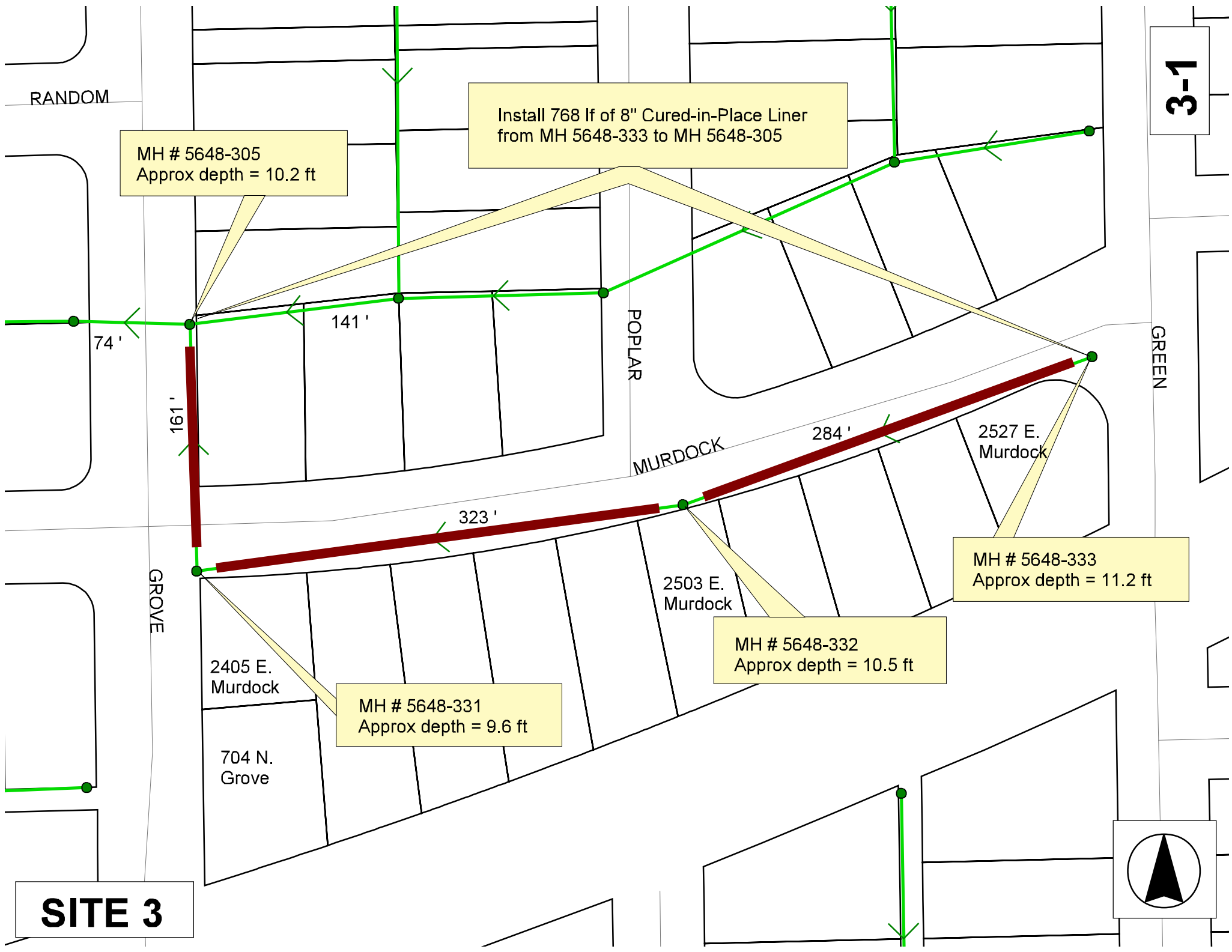


RANDOM

3-1

MH # 5648-305
Approx depth = 10.2 ft

Install 768 lf of 8" Cured-in-Place Liner
from MH 5648-333 to MH 5648-305



POPLAR

GREEN

74'

141'

161'

323'

284'

2527 E. Murdock

2503 E. Murdock

MH # 5648-333
Approx depth = 11.2 ft

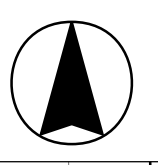
2405 E. Murdock

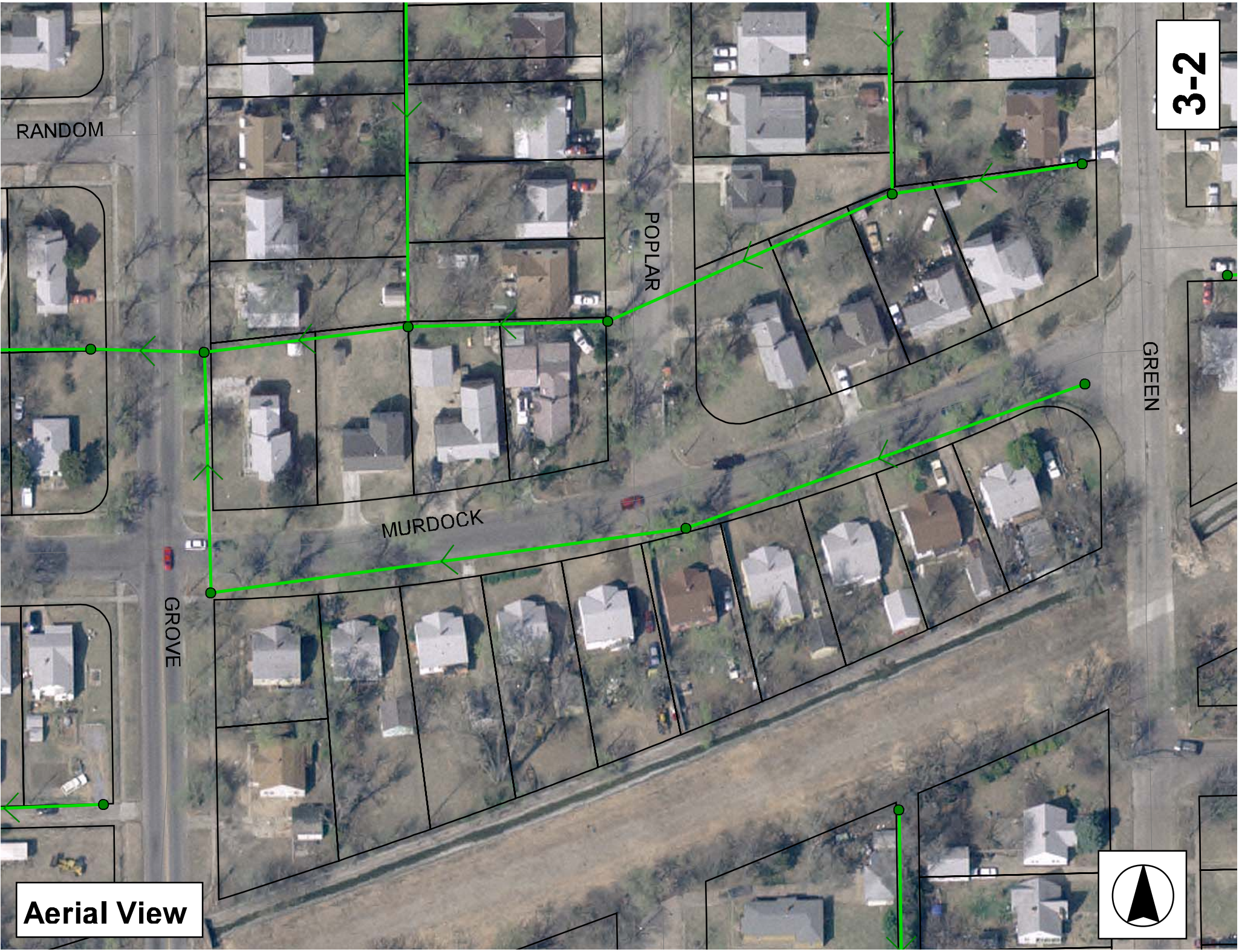
MH # 5648-331
Approx depth = 9.6 ft

MH # 5648-332
Approx depth = 10.5 ft

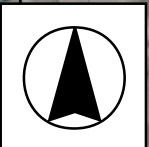
704 N. Grove

SITE 3





Aerial View



Television Inspection Master Report

5/2/2007
2:46 PM

US Structure: 5648-333
DS Structure: 5648-332

2527 E MURDOCK ST
2505 E MURDOCK ST

Date Insp: 6/21/2006
Dir Televised: Upstream To Downstream

Basin: EC02B

Pipe Information

E-117

Shape: Round Length Status: Project No.:
Dia/Ht Width: 8 0 Material: VCP Index:
Length: 284.3 Slope: 0.528 Surface:

Inspection Information

Crew: 692 Percent Full: 10 Tape ID: DVD #0169
Weather: Sunny Purpose: TV Existing Line Counter Start:
Surface Cond: Flow: Normal Flow Counter Stop:

Obs. #	VTR Counter	Distance	Location	Description	Rating	Obsrvd (gpm)	Est. (gpm)	Ratings		
								Struct	Clean	Remain (gpm)
1		8.0	US Manhole	5648-333	1		0.000	0	0	0.000
2		44.1	Joint	Roots	3		0.008	5	8	0.008
3		55.5	Joint	Roots	3		0.008	5	8	0.008
4		70.6	Joint	Roots	2		0.004	2	4	0.004
5		76.4	Joint	Roots	3		0.008	5	8	0.008
6		78.0	South	Break-In Conn	4		0.000	0	0	0.000
heavy roots around PVC connection ---2527 E. Murdock										
7		96.0	South	Sealed Off Wye South	1		0.000	0	0	0.000
8		134.7	South	Wye Service	3		0.000	2	0	0.000
LATERAL APPEARS TO BE SEPARATED AT WYE BELL. ROOTS APPEAR TO COME FROM UPSTREAM OF THAT / 2521 E Murdock / large roots up inside the service										
9		149.3		Sealed Off Wye South	1		0.000	0	0	0.000
10		188.1	South	Wye Service	3		0.000	2	0	0.000
ROOTS / 2515 E. Murdock										
11		189.1		Roots	2		0.004	2	4	0.004
12		203.0		Sealed Off Wye South	1		0.000	0	0	0.000
13		228.1		Roots	2		0.004	2	4	0.004
14		240.1	South	Break-In Conn	2		0.000	0	0	0.000
2509 E Murdock										
15		241.8		Sealed Off Wye South	1		0.000	0	0	0.000
16		241.8		Crack-Horizontal	3		0.000	0	0	0.000
17		256.6		Sealed Off Wye South	1		0.000	0	0	0.000
18		269.5		Broken Pipe	3		0.000	0	0	0.000
19		282.1	DS Manhole	5648-332 / very small grade change at manhole			0.000	0	0	0.000

Television Inspection Master Report

5/2/2007
2:46 PM

US Structure: 5648-332 2505 E MURDOCK ST Date Insp: 6/21/2006 Basin: EC02B
DS Structure: 5648-331 2403 E MURDOCK ST Dir Televised: Upstream To Downstream

Pipe Information

Dia/Ht Width: 8 Material: VCP Length: 323.1 Slope: 0.334

Inspection Information

Crew: 692 Percent Full: 10 Tape ID: DVD #0169
Weather: Sunny Purpose: TV Existing Line Counter Start:
Surface Cond: N/A Flow: Normal Flow Counter Stop:

Obs. #	VTR Counter Comment	Distance	Location	Description	Rating	Obsrvd (gpm)	Est. (gpm)	Ratings		
								Struct	Clean	Remain (gpm)
1		0.0	US Manhole 5648-332		1		0.000	0	0	0.000
2		9.5	South	Break-In Conn	1		0.001	0	0	0.001
2503 E. MURDOCK										
3		10.0	Crown	Roots	2		0.004	2	4	0.004
4		24.2		Sealed Off Wye South	1		0.000	0	0	0.000
5		62.1	South	Break-In Conn	3		0.004	2	0	0.004
2427 E. MURDOCK / PACKED WITH ROOTS										
6		77.7		Sealed Off Wye South	1		0.000	0	0	0.000
7		82.3	Quad 1 / U-Rt	Crack-Horizontal	1		0.001	1	0	0.001
8		116.3	South	Wye Service	3		0.000	2	0	0.000
2421 E. MURDOCK OFFSET/ROOTS										
9		126.9	Quad 1 / U-Rt	Crack-Horizontal	2		0.002	2	0	0.002
10		134.3		Sealed Off Wye South	2		0.002	0	0	0.002
11		138.9	Crown	Broken Pipe	2		0.008	44	0	0.008
12		143.0	Quad 1 / U-Rt	Broken Pipe	1		0.004	30	0	0.004
13		148.3	Quad 1 / U-Rt	Crack-Horizontal	2		0.002	2	0	0.002
14		150.9	Quad 1 / U-Rt	Broken Pipe	2		0.008	44	0	0.008
15		153.8	Crown	Broken Pipe	2		0.008	44	0	0.008
16		172.8	South	Wye Service	2		0.000	0	0	0.000
2415 E. MURDOCK OFFSET/ROOTS										
17		187.7		Sealed Off Wye South	2		0.002	0	0	0.002
18		218.7	Joint	Roots	2		0.004	2	4	0.004
19		219.7	Crown	Crack-Horizontal	3		0.004	5	0	0.004
20		223.2	South	Break-In Conn	3		0.004	2	0	0.004
2409 E. MURDOCK OFFSET/FULL OF ROOTS										
21		224.1	Crown	Crack-Horizontal	3		0.004	5	0	0.004
22		225.9	Crown	Crack-Horizontal	2		0.002	2	0	0.002
23		228.3	Quad 1 / U-Rt	Broken Pipe	2		0.008	44	0	0.008
24		230.2	Quad 2 / L-Rt	Roots	1		0.002	1	1	0.002
25		231.5	Crown	Crack-Horizontal	3		0.004	5	0	0.004
26		234.3	Crown	Crack-Horizontal	1		0.001	1	0	0.001
27		241.1		Sealed Off Wye South	1		0.000	0	0	0.000
28		276.8	South	Wye Service	2		0.000	0	0	0.000
2405 E. MURDOCK #1 ROOTS / CONTRACTOR TO DYE TEST TO VERIFY IF 704 N GROVE IS CONNECTED TO THE SERVICE FOR 2405 MURDOCK (SEE NEXT LOG FOR 2 ND POSSIBLE CONNECTION FOR 704 GROVE)										
29		293.4	Crown	Broken Pipe	2		0.008	44	0	0.008
30		297.7		Sealed Off Wye South	1		0.000	0	0	0.000
31		309.5		Sealed Off Wye South						
32		315.7	DS Manhole	5648-331						

3-4

Television Inspection Master Report

5/2/2007
2:46 PM

US Structure: 5648-331
DS Structure: 5648-305

2403 E MURDOCK ST
2402 E MURDOCK ST

Date Insp: 6/22/2006
Dir Televised: Upstream To Downstream

Basin: EC02B

Pipe Information

E-117

Shape: Round Length Status: Project No.:
Dia/Ht Width: 8 0 Material: VCP Index:
Length: 161.0 Slope: 0.099 Surface:

Inspection Information

Crew: 692 Percent Full: 10 Tape ID: DVD #0169
Weather: Sunny Purpose: TV Existing Line
Surface Cond: Flow: Normal Flow Counter Stop:

Obs. #	VTR Counter Comment	Distance	Location	Description	Rating	Obsrvd (gpm)	Est. (gpm)	Ratings Struct	Clean	Remain (gpm)
1		0.0	US Manhole	5648-331	1		0.000	0	0	0.000
2		6.0	West	Wye Service	1		0.000	0	0	0.000
POSSIBLE SEALOFF / NOT SEALED AT THE MAIN (needs verified)										
COULD THIS BE TAP FOR 704 N GROVE? CONTRACTOR TO DYE TEST TO LOCATE TAP FOR 704 N GROVE										
3		67.4	Invert	Broken Pipe	3		0.000	0	0	0.000
	crown									
4		88.0	Upper Left	Broken Pipe	3		0.000	0	0	0.000
	crown									
5		92.9	Crown	Broken Pipe	3		0.000	0	0	0.000
6		95.0	Upper Left	Broken Pipe	3		0.000	0	0	0.000
	crown									
7		97.2	Upper Left	Crack-Horizontal	3		0.000	0	0	0.000
	crown									
8		100.2	Upper Left	Crack-Horizontal	3		0.000	0	0	0.000
	crown									
9		103.3	Upper Left	Crack-Horizontal	3		0.000	0	0	0.000
	crown									
10		106.1	Upper Left	Crack-Horizontal	3		0.000	0	0	0.000
	crown									
11		109.2	Crown	Crack-Horizontal	3		0.000	0	0	0.000
	crown									
12		144.4		Sag begins	2		0.000	2	0	0.000
13		160.4	DS Manhole	5648-305	1		0.000	0	0	0.000

Line runs under a sidewalk.

3-5