

8-1

MH # 5449-339  
Approx depth = 7.8 ft

17TH ST. N.

232'

MH # 5449-338  
Approx depth = 7.8 ft

ARKANSAS RIVER

Install 204 lf of 8"  
Cured-in-Place Liner  
from MH 5449-340 to  
MH 5449-338

MH # 5449-340  
Approx depth = 7.4 ft

1761

7'

197'

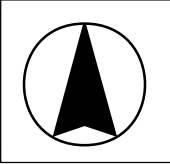
8"

1753

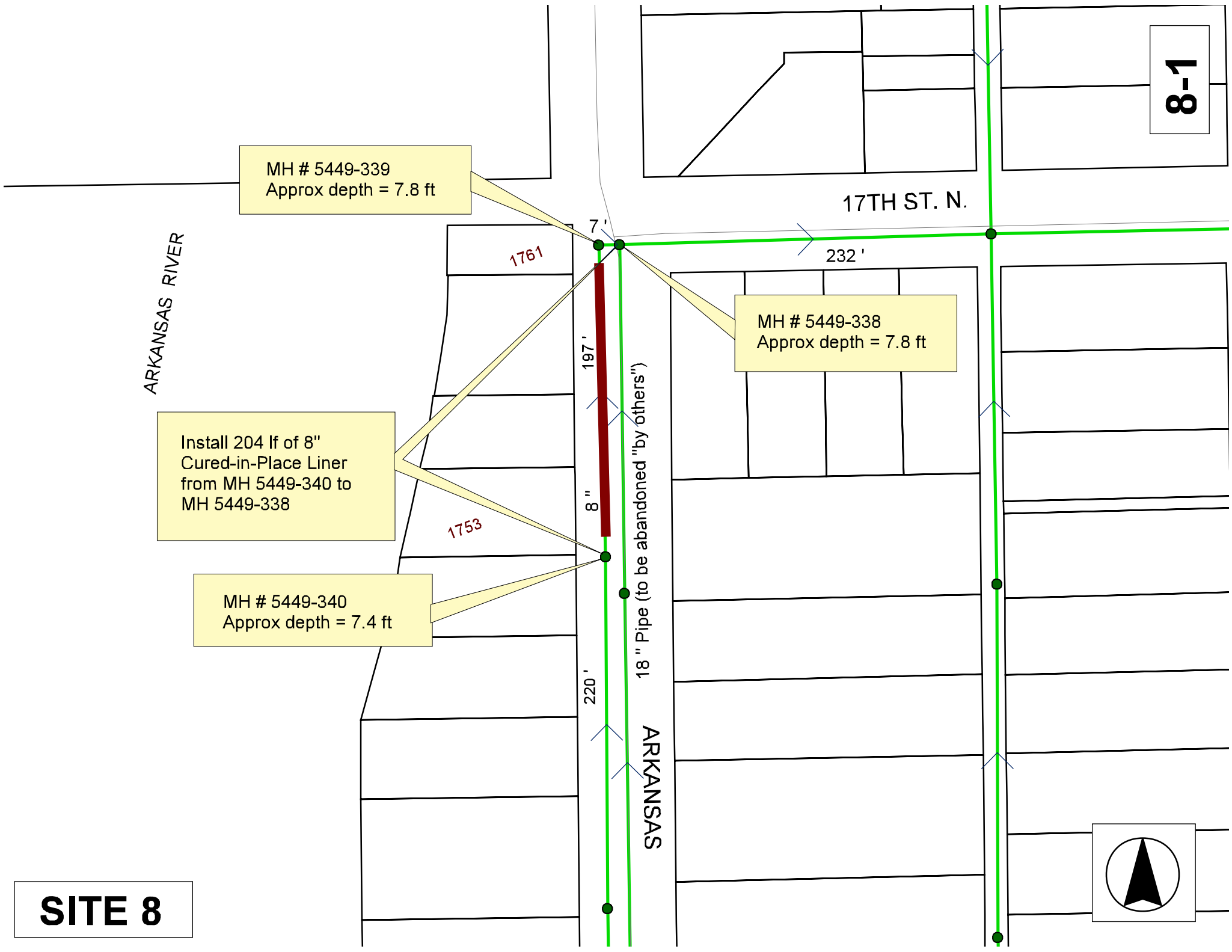
220'

18" Pipe (to be abandoned "by others")

ARKANSAS



**SITE 8**



8-2

17TH ST. N.

ARKANSAS RIVER

LOCATION

ARKANSAS

JACKSON

Aerial View



# Television Inspection Master Report

5/7/2007  
11:11 AM

US Structure: 5449-340      1749 N ARKANSAS AVE      Date Insp: 6/19/2006      Basin: C03F  
DS Structure: 5449-339      1757 N ARKANSAS ST      Dir Televised: Upstream To Downstream

## Pipe Information

Project No.: D-071      Dia: 8      Material: VCP      Length: 193.9      Slope: 0.098

## Inspection Information

Crew: 694      Percent Full: 0      Tape ID: DVD #0173  
Weather: Sunny      Purpose: TV Existing Line Normal Flow      Counter Start:

Obs. #	VTR	Counter	Distance	Location	Description	Rating	Obsrvd (gpm)	Est. (gpm)	Ratings		
									Struct	Clean	Remain (gpm)
1			0.0	US Manhole	5449-340	1		0.000	0	0	0.000
2			4.1		Crack-Radial	3		0.000	0	0	0.000
3			8.1	West	Sealed Off Wye West	1		0.000	0	0	0.000
4			15.2		Crack-Radial	3		0.000	0	0	0.000
5			20.3		Crack-Radial	3		0.000	0	0	0.000
6			25.6		Crack-Horizontal	3		0.000	0	0	0.000
7			31.8	West	Sealed Off Wye/Roots	1		0.000	0	0	0.000
8			38.8		Crack-Radial	3		0.000	0	0	0.000
9			39.7	West	Break-In Conn	1		0.000	0	0	0.000
1753 NORTH ARKANSAS											
10			41.5		Crack-Horizontal	3		0.000	0	0	0.000
11			46.9		Crack-Horizontal	3		0.000	0	0	0.000
12			55.9	West	Sealed Off Wye/Roots	1		0.000	0	0	0.000
13			56.4	Crown	PREVIOUSLY MADE POINT REPAIR						
14			57.2		Crack-Radial	4		0.000	0	0	0.000
15			70.5		Crack-Radial	4		0.000	0	0	0.000
16			79.3	West	Break-In Conn	1		0.000	0	0	0.000
1757 N ARKANSAS											
17			96.7		Crack-Radial	3		0.000	0	0	0.000
18			102.3		Crack-Radial	3		0.000	0	0	0.000
19			103.1	West	Sealed Off Wye/Roots	3		0.003	0	0	0.003
20			104.4		Crack-Radial	3		0.000	0	0	0.000
21			109.8		Crack-Radial	3		0.000	0	0	0.000
22			112.5		Crack-Radial	3		0.000	0	0	0.000
23			114.7		Crack-Radial	3		0.000	0	0	0.000
24			117.6		Crack-Radial	3		0.000	0	0	0.000
25			127.0	West	Sealed Off Wye/Roots	3		0.003	0	0	0.003
26			138.8		Crack-Radial	3		0.000	0	0	0.000
27			141.2		Crack-Radial	3		0.000	0	0	0.000
28			144.0		Crack-Radial	3		0.000	0	0	0.000
29			146.7		Crack-Radial	3		0.000	0	0	0.000
30			153.0	West	Sealed Off Wye/Roots	3		0.003	0	0	0.003
31			154.7		Crack-Radial	3		0.000	0	0	0.000
32			159.8		Crack-Radial	3		0.000	0	0	0.000
33			164.8		Crack-Radial	3		0.000	0	0	0.000
34			176.5		Wye Service	3		0.000	0	0	0.000
1761 N ARKANSAS / wye is broken outside of the main / to be replaced "by others" after liner installation											
35			178.2		Crack-Horizontal	3		0.000	0	0	0.000
36			183.2		Crack-Radial	3		0.000	0	0	0.000
37			185.7		Crack-Radial	4		0.000	0	0	0.000
38			193.8		Crack-Horizontal	4		0.000	0	0	0.000
39			196.5		Crack-Horizontal	4		0.000	0	0	0.000
40			199.2	DS Manhole	5449-339						

NOTE: The line between 5449-339 and 5449-338 has not been televised. We are lining this 7' of pipe because of a crack that is visible from the camera's point of view as it entered MH 5449-339 from the south.

8-3