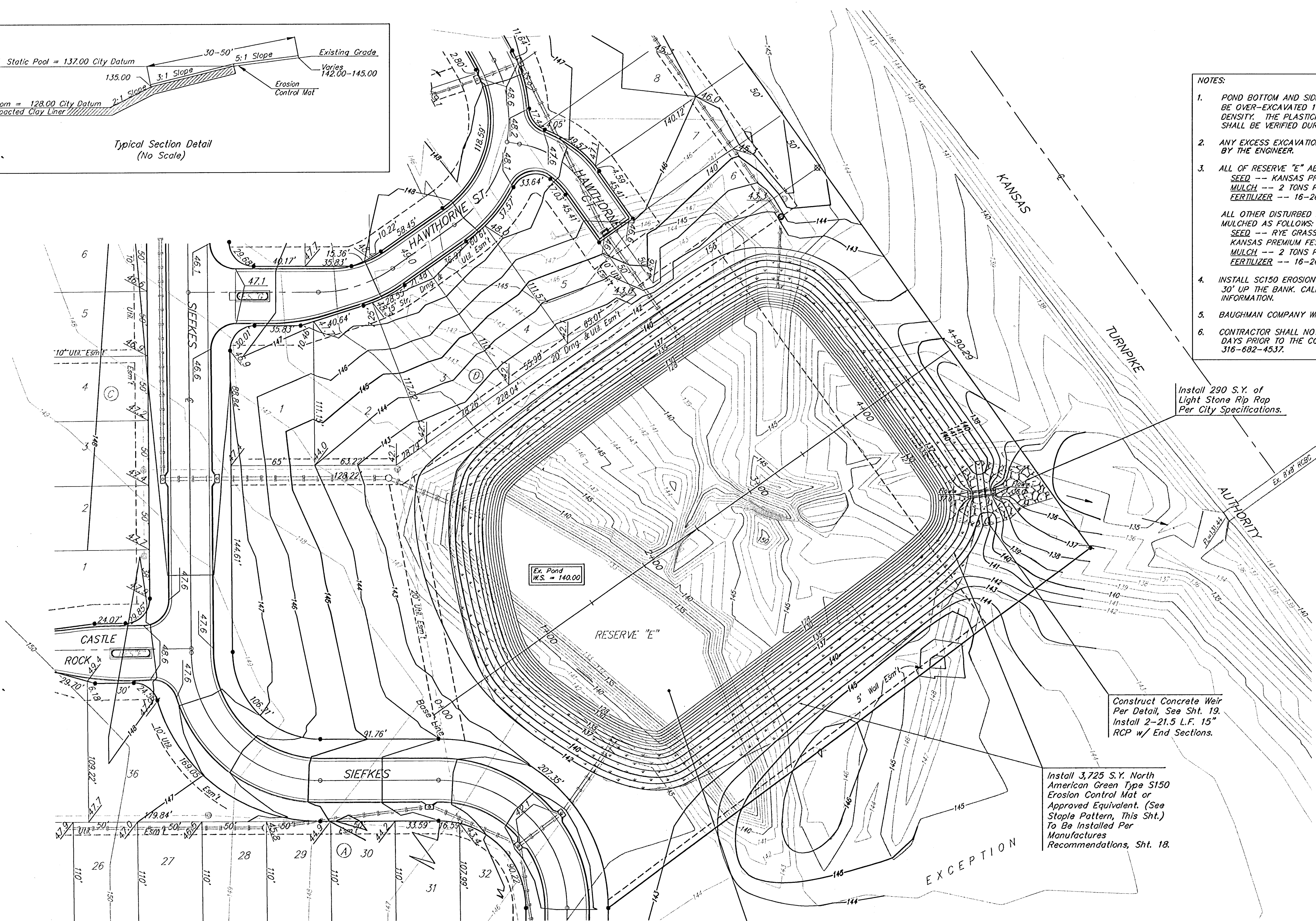
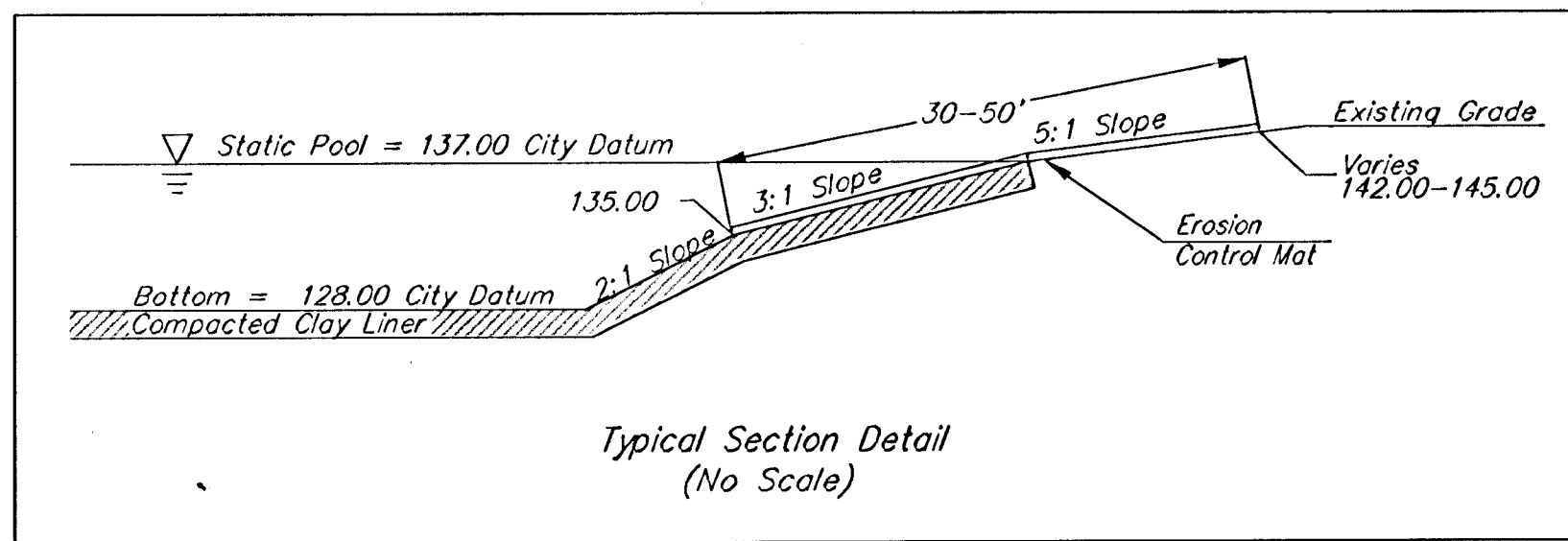


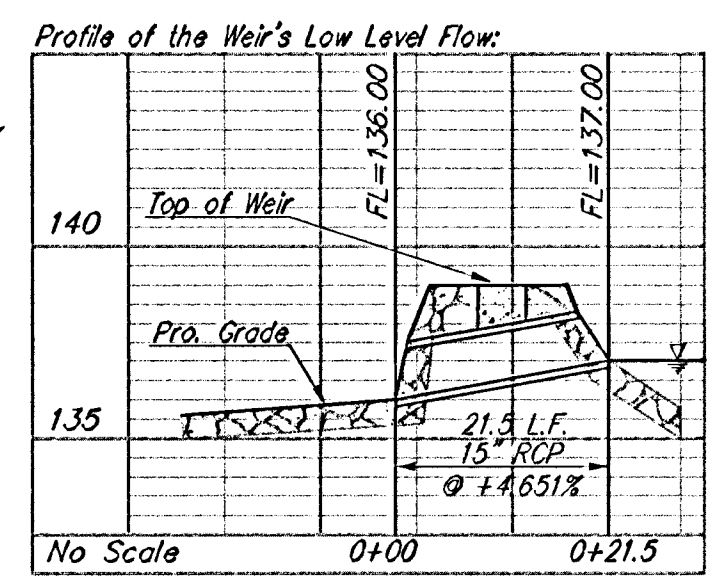
BENCHMARK:
 "□" Cut on Top of Curb, North
 Side Siefkes, NW of Center Line
 of Siefkes Ct., Shadybrook Meadow
 Addition.
 Elev. = 135.19 City Datum
 (1322.59 NGVD)



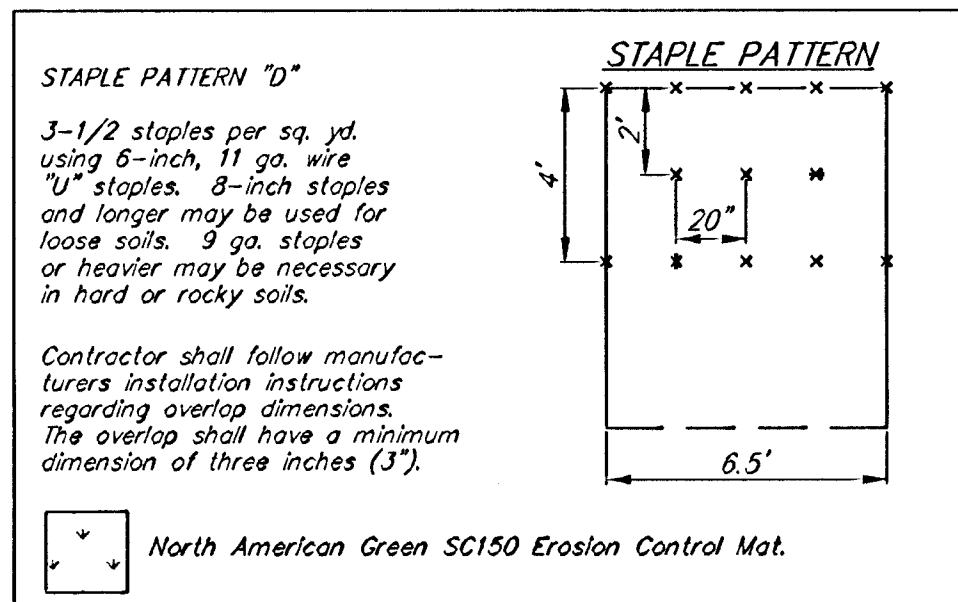
SCALE:
 1" = 40'
 • = IRON

- NOTES:**
- POND BOTTOM AND SIDESLOPES BELOW STATIC POOL ELEVATION SHALL BE OVER-EXCAVATED 1' AND A 1' CLAY LINER SHALL BE COMPACTED TO 95% STD. DENSITY. THE PLASTICITY INDEX (P.I.) SHALL BE AT LEAST 20. THE COMPACTION AND P.I. SHALL BE VERIFIED DURING CONSTRUCTION.
 - ANY EXCESS EXCAVATION SHALL BE STORED ON-SITE AT LOCATIONS TO BE DETERMINED BY THE ENGINEER.
 - ALL OF RESERVE "E" ABOVE THE STATIC WATER SURFACE SHALL BE SEEDED AND MULCHED AS FOLLOWS: (TEMPORARY SEEDING)
 SEED -- RYE GRASS (PL-5) -- 1 1/2 TONS/1000 SQ. FT. AND
 KANSAS PREMIUM FESCUE BLEND; 3 1/4 TONS/1000 SQ. FT.
 MULCH -- 2 TONS PRAIRIE HAY / ACRE
 FERTILIZER -- 16-26-16 RATIO - 350 LBS./AC.
 - INSTALL SC150 EROSION CONTROL MAT FROM BELOW THE WATER SURFACE (135.00) TO 30' UP THE BANK. CALL NORTH AMERICAN GREEN, INC. AT 1-800-772-2040 FOR MORE INFORMATION.
 - BAUGHMAN COMPANY WILL PROVIDE POND STAKING INFORMATION AT THE TIME OF CONSTRUCTION.
 - CONTRACTOR SHALL NOTIFY PAUL CATER, WITH THE KANSAS TURNPIKE AUTHORITY 10 DAYS PRIOR TO THE CONSTRUCTION OF THE POND. MR. CATER CAN BE CONTACTED AT 316-682-4537.

Install 290 S.Y. of
 Light Stone Rip Rap
 Per City Specifications.



PROJECT EARTHWORK SUMMARY:
 Mass Grading -
 17,814 C.Y. Excavation
 32,551 C.Y. Compacted Fill
 Pond Plan -
 44,436 C.Y. Excavation
 2,700 C.Y. Compacted Fill
 Total -
 62,310 C.Y. Excavation
 35,251 C.Y. Compacted Fill
 (Note: This Quantity is to Achieve Final Shape of Pond. It Does Not Include The Over-Excavation of 1' to Place Clay Liner.)



Construct Concrete Weir
 Per Detail, See Sht. 19.
 Install 2-21.5 L.F. 15" RCP w/ End Sections.

Install 3,725 S.Y. North American Green Type S150 Erosion Control Mat or Approved Equivalent. (See Staple Pattern, This Sht.) To Be Installed Per Manufactures Recommendations, Sht. 18.

Pond Data:
 W.S. = 137.00 (City Datum)
 Bottom = 128.00 (City Datum)
 100'-10" W.S. = 139.83 (City Datum)

SHOAL CREEK ADDITION
POND PLAN
 CITY OF WICHITA, KANSAS

BAUGHMAN COMPANY P.A.
 ENGINEERING, SURVEYING, & PLANNING
 316-282-7271 • 315 ELLIS • WICHITA, KANSAS 67211

PROJECT NUMBER
488-83187

DESIGN SCL DRAWN SCL APPROVED NBW DATE 1/18/01 SCALE NOTED SHEET 17 OF 28