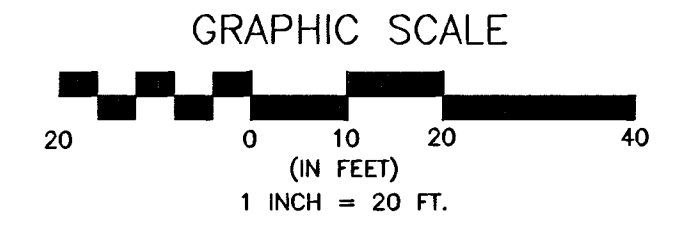
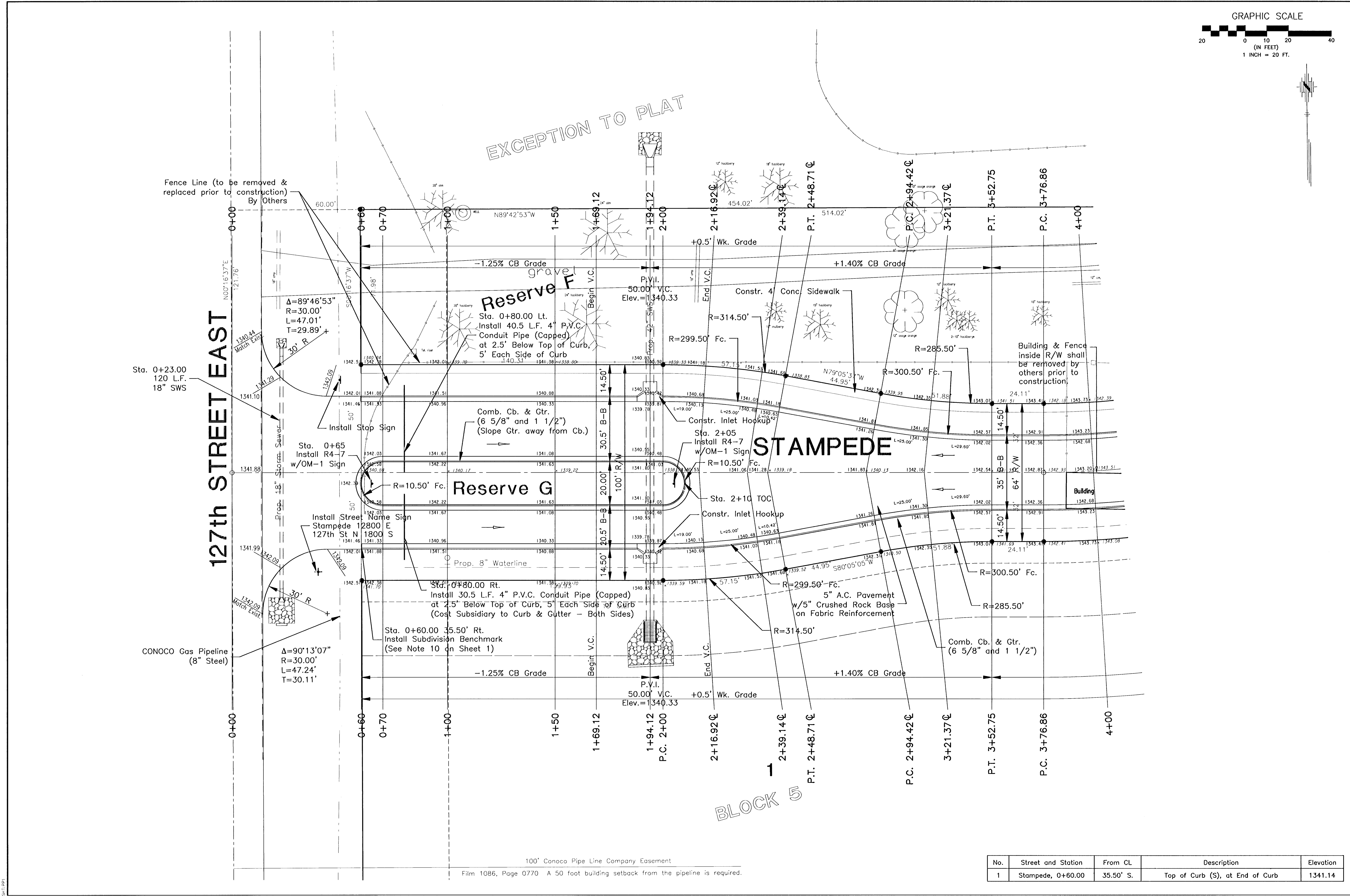


G:\APPS\DCI\1\B54\BASE-ST10.dwg Thu Mar 14 16:09:39 2002

01/1/01



100' Conoco Pipe Line Company Easement
 Film 1086, Page 0770 A 50 foot building setback from the pipeline is required.

No.	Street and Station	From CL	Description	Elevation
1	Stampede, 0+60.00	35.50' S.	Top of Curb (S), at End of Curb	1341.14

<p>FINAL</p> <p>Designed By: J. Ubert / J. Dickman Drawn By: J. Dickman P.O. Job No.: 16944 Date: March, 2002</p>	<p>POE & ASSOCIATES OF KANSAS, INC. CONSULTING ENGINEERS 5940 E. Central, Suite 200 Wichita, KS 67208-4242 Phone: 316-685-4114 FAX: 316-685-4444</p> <p>PE</p>
<p>EQUESTRIAN ESTATES - PHASE 1 STREET IMPROVEMENTS STAMPEDE CITY OF WICHITA, KANSAS MICHAEL E. LINDERBAUM, P.E. - CITY ENGINEER C.O.M. Project # 472-83424 O.C.A. # 165505</p>	