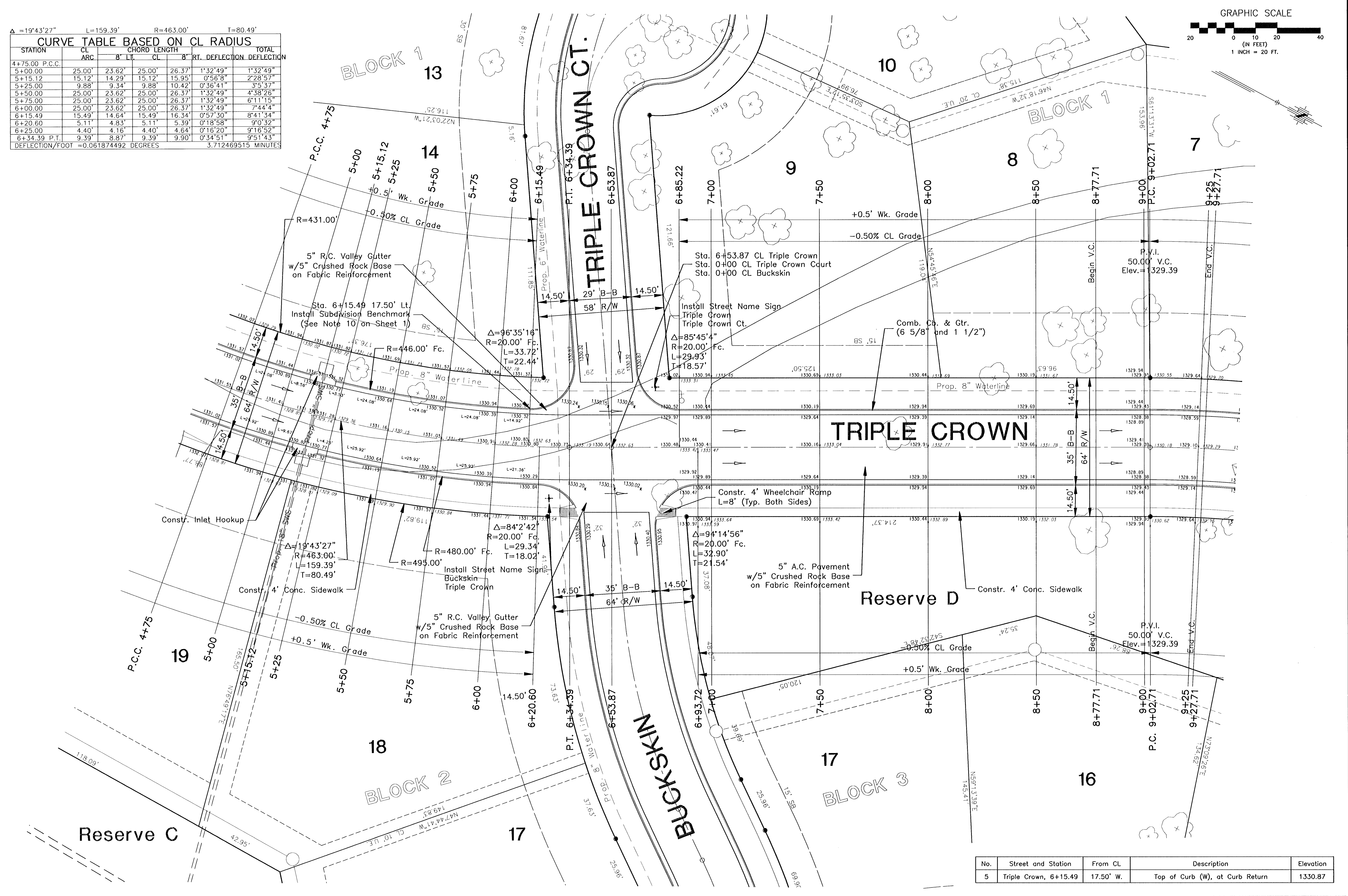
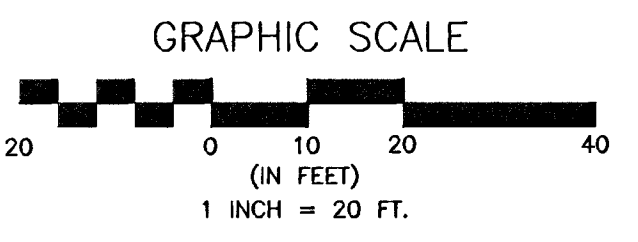


$\Delta = 19'43'27''$ $L = 159.39'$ $R = 463.00'$ $T = 80.49'$

CURVE TABLE BASED ON CL RADIUS						
STATION	CL ARC	CHORD LENGTH		RT. DEFLECTION		TOTAL DEFLECTION
		B' L	CL	B'	RT.	
4+75.00 P.C.C.						
5+00.00	25.00'	23.62'	25.00'	26.37'	1'32'49"	1'32'49"
5+15.12	15.12'	14.29'	15.12'	15.95'	0'56'8"	2'28'57"
5+25.00	9.88'	9.34'	9.88'	10.42'	0'36'41"	3'5'37"
5+50.00	25.00'	23.62'	25.00'	26.37'	1'32'49"	4'38'26"
5+75.00	25.00'	23.62'	25.00'	26.37'	1'32'49"	6'1'15"
6+00.00	25.00'	23.62'	25.00'	26.37'	1'32'49"	7'44'4"
6+15.49	15.49'	14.64'	15.49'	16.34'	0'57'30"	8'41'34"
6+20.60	5.11'	4.83'	5.11'	5.39'	0'18'58"	9'0'32"
6+25.00	4.40'	4.16'	4.40'	4.64'	0'16'20"	9'16'52"
6+34.39 P.T.	9.39'	8.87'	9.39'	9.90'	0'34'51"	9'51'43"
DEFLECTION/FOOT = 0.061874492 DEGREES						3.712469515 MINUTES



No.	Street and Station	From CL	Description	Elevation
5	Triple Crown, 6+15.49	17.50' W.	Top of Curb (W), at Curb Return	1330.87

6: APPS\DOA\PLANS\BASE-ST.dwg F:\Mar 22 09:42:46 2002 Bernard Nollia - POE & ASSOCIATES OF KANSAS INC.

EQUESTRIAN ESTATES - PHASE 1
 STREET IMPROVEMENTS
 TRIPLE CROWN
 CITY OF WICHITA, KANSAS
 MICHAEL E. UNDEBAK, P.E. - CITY ENGINEER
 C.O.W. Project # 472-83424 O.C.A. # 765705

POE & ASSOCIATES OF KANSAS, INC.
 CONSULTING ENGINEERS
 5940 E. Central, Suite 200 Wichita, KS 67208-4242
 Phone 316/685-4114 FAX 316/685-4444

Designed By: J. Libert / J. Dickman
 Drawn By: J. Dickman
 P.O. Job No.: 16944
 Date: March, 2002

Revision:

FINAL

Sheet
 9 of 112