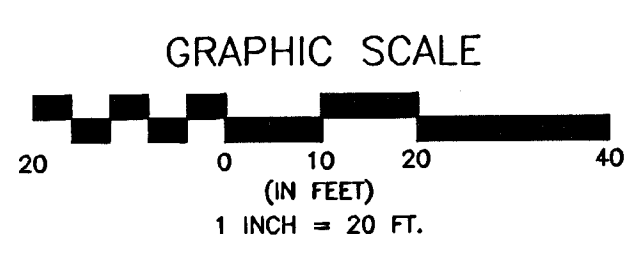
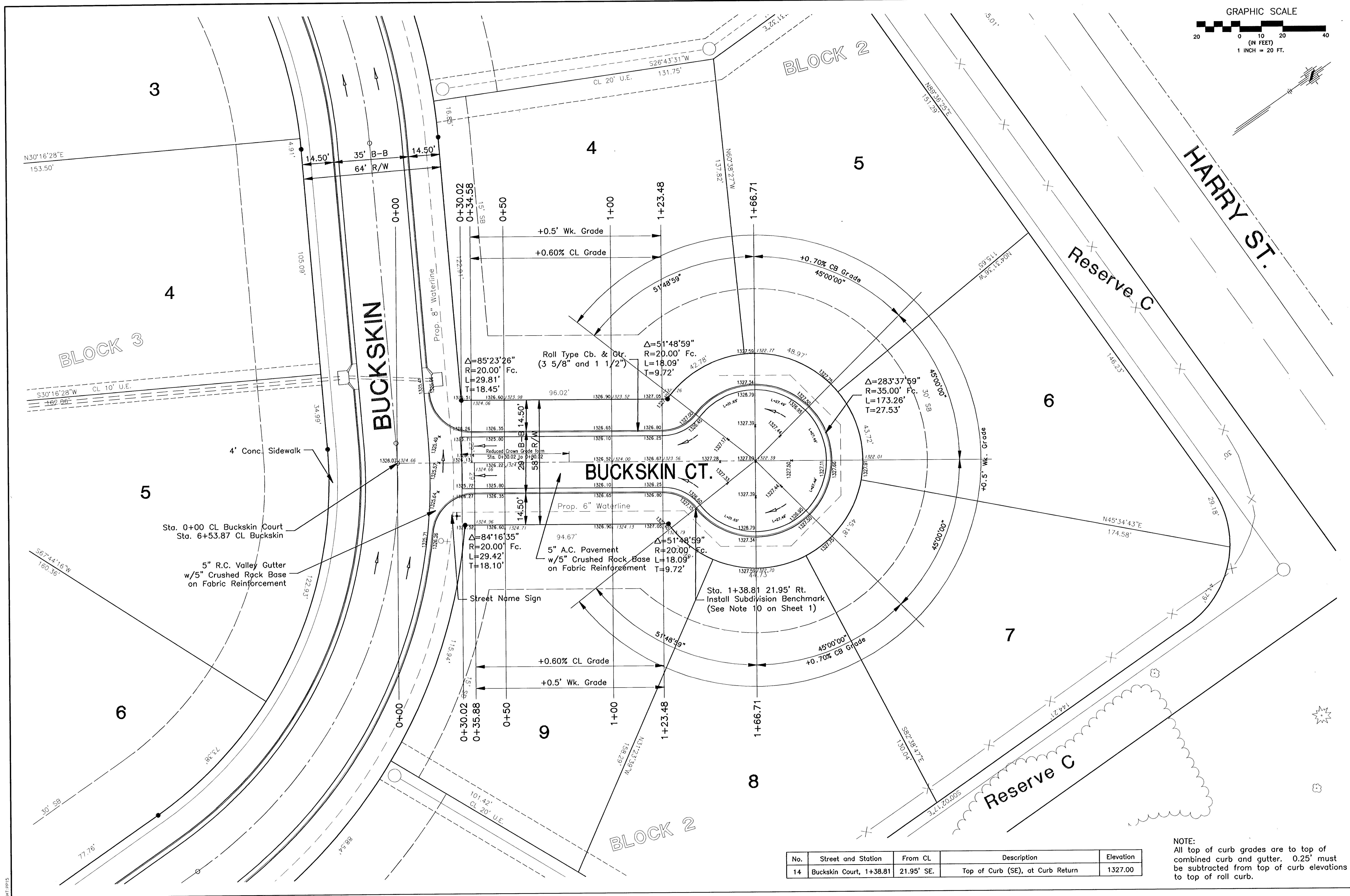


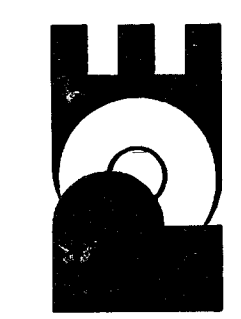
C:\p\p\loc\p165a\BASE-ST1u.dwg P1 Mar 15 09:26:10 2002 James Libert - Poe & Associates of Kansas, Inc.



No.	Date	By	Approved

EQUESTRIAN ESTATES - PHASE 1
 STREET IMPROVEMENTS
 BUCKSKIN COURT
 CITY OF WICHITA, KANSAS
 MICHAEL E. LINDBLAK, P.E. - CITY ENGINEER
 C.O.W. Project # 472-83424 O.C.A. # 765705

POE & ASSOCIATES OF KANSAS, INC.
 CONSULTING ENGINEERS
 5940 E. Central, Suite 200 • Wichita, KS 67208-4542
 Phone 316/685-4114 • FAX 316/685-4444



FINAL
 Designed By: J. Libert / J. Dickman
 Drawn By: J. Dickman
 P.O. Job No.: 16844
 Date: March 2002

No.	Street and Station	From CL	Description	Elevation
14	Buckskin Court, 1+38.81	21.95' SE	Top of Curb (SE), at Curb Return	1327.00

NOTE:
 All top of curb grades are to top of combined curb and gutter. 0.25' must be subtracted from top of curb elevations to top of roll curb.