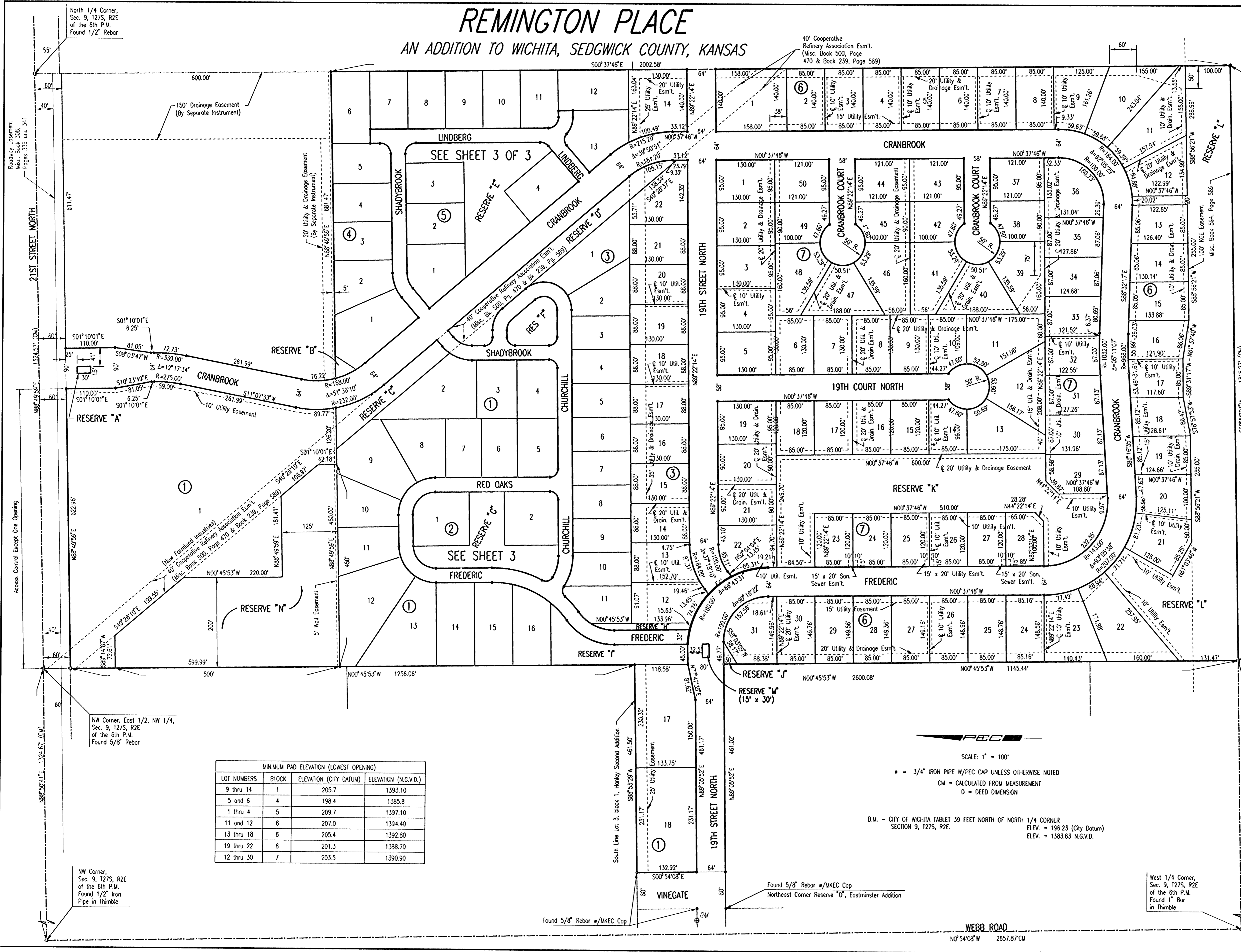


REMINGTON PLACE

AN ADDITION TO WICHITA, SEDGWICK COUNTY, KANSAS

PROJECT NO.	SHEET NO.	TOTAL SHEETS
472-76-245-83375-000-000-001	2	58



Center Sec. 9, 127S, R2E of the 6th P.M. Found 1/2" Iron Pipe

Center Sec. 9, 127S, R2E of the 6th P.M. Found 1/2" Iron Pipe

SW Corner, East 1/2, NW 1/4, Sec. 9, 127S, R2E of the 6th P.M. Set 3/4" Iron Pipe

West 1/4 Corner, Sec. 9, 127S, R2E of the 6th P.M. Found 1" Bar in Thimble

Professional Engineering Consultants, P.A.
303 S. TOPEKA • WICHITA, KANSAS 67202
316-262-2691 • FAX 316-262-3003

Designed by BER
Checked by
Drawn by BJS
Date JUNE 2001
Job No. 0158

MINIMUM PAD ELEVATION (LOWEST OPENING)			
LOT NUMBERS	BLOCK	ELEVATION (CITY DATUM)	ELEVATION (N.G.V.D.)
9 thru 14	1	205.7	1393.10
5 and 6	4	198.4	1385.8
1 thru 4	5	209.7	1397.10
11 and 12	6	207.0	1394.40
13 thru 18	6	205.4	1392.80
19 thru 22	6	201.3	1388.70
12 thru 30	7	203.5	1390.90

SCALE: 1" = 100'

• = 3/4" IRON PIPE W/PEC CAP UNLESS OTHERWISE NOTED

CM = CALCULATED FROM MEASUREMENT

D = DEED DIMENSION

B.M. - CITY OF WICHITA TABLET J9 FEET NORTH OF NORTH 1/4 CORNER SECTION 9, 127S, R2E.

ELEV. = 196.23 (City Datum)
ELEV. = 1383.63 N.G.V.D.

DSNR: RHM OPER. GLM SCALE: 1"=100'
1/2001/01158/FINAL.DGN Plot Date: 8-30-2001