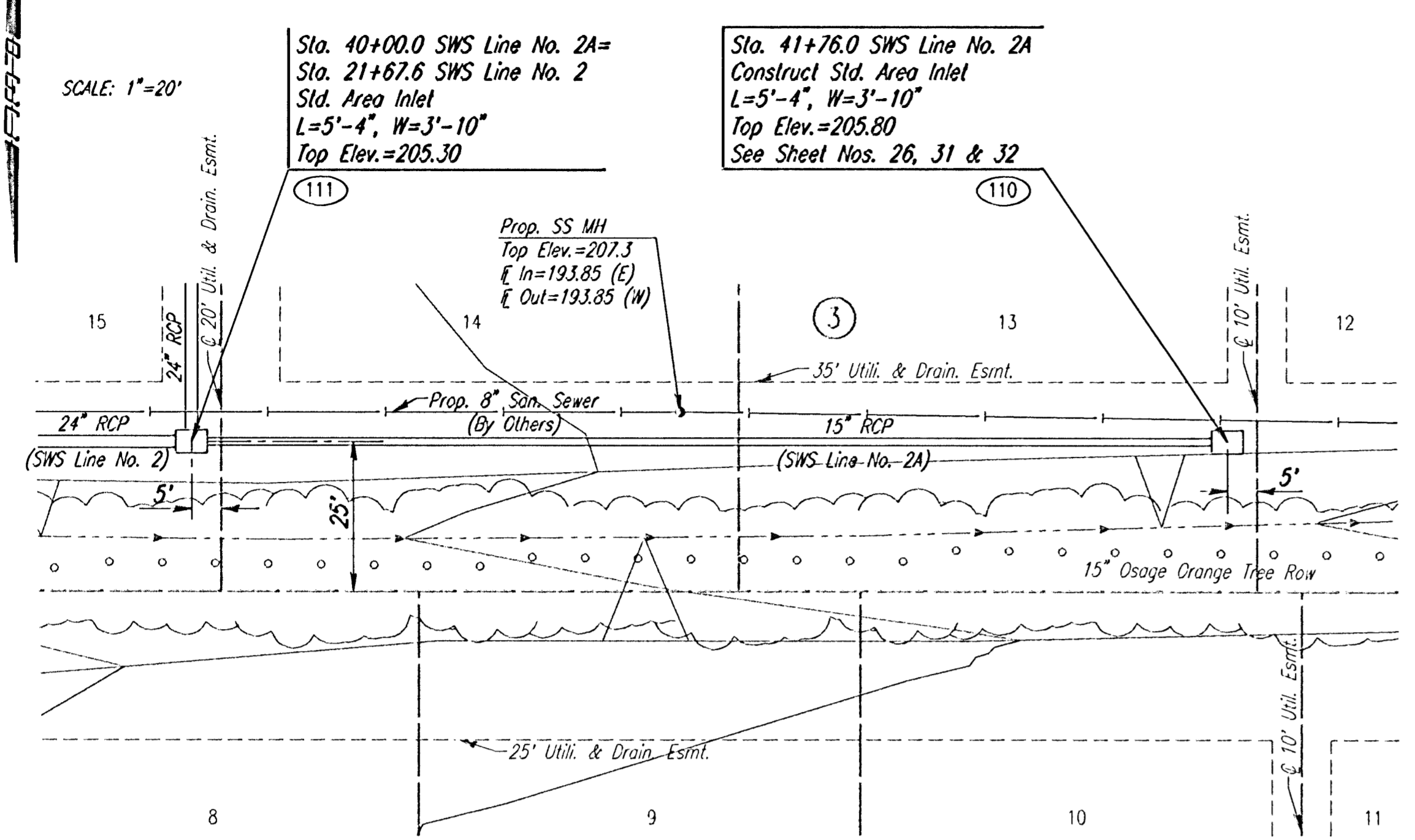


SCALE: 1"=20'



Sta. 40+00.0 SWS Line No. 2A=  
Sta. 21+67.6 SWS Line No. 2  
Std. Area Inlet  
L=5'-4", W=3'-10"  
Top Elev.=205.30

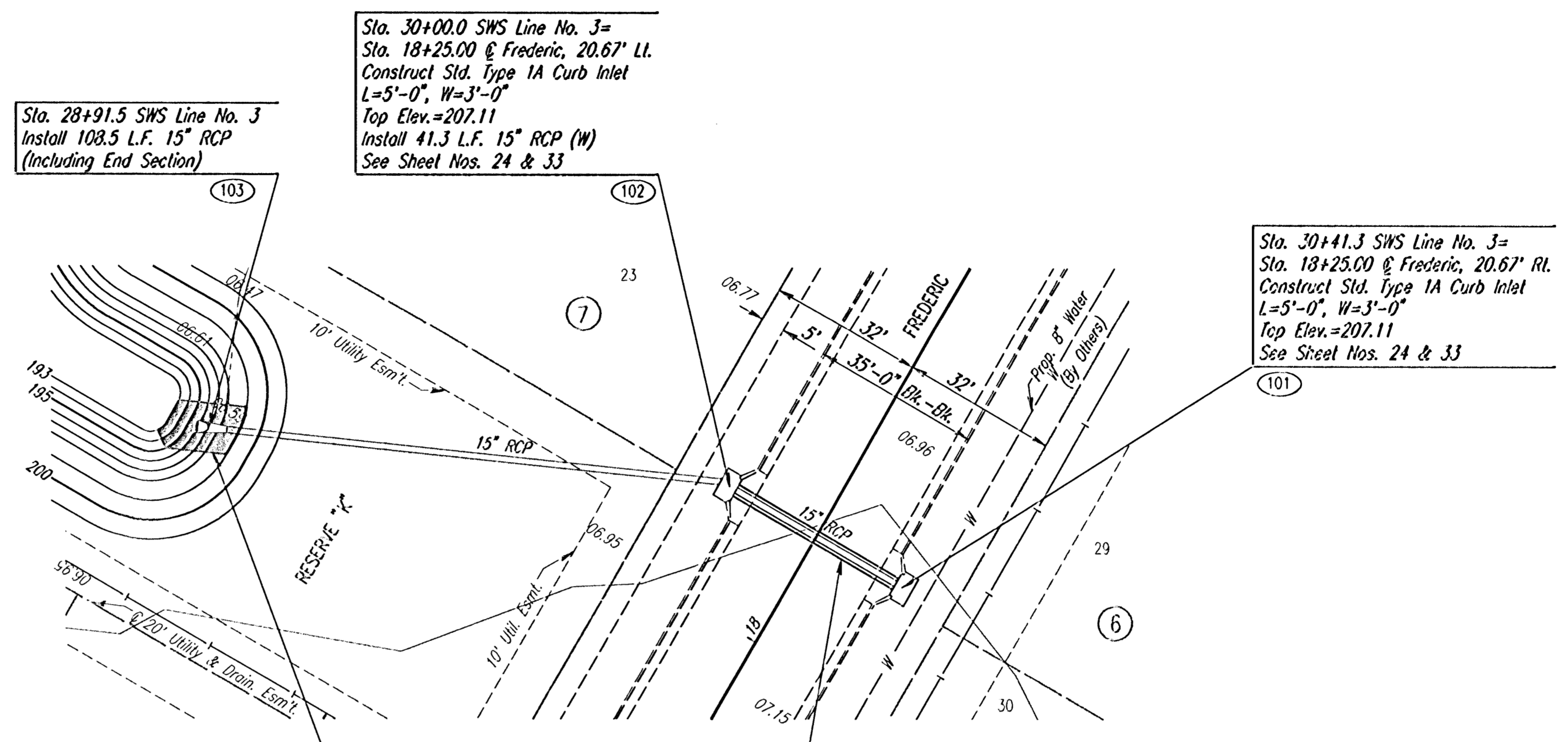
Sta. 41+76.0 SWS Line No. 2A  
Construct Std. Area Inlet  
L=5'-4", W=3'-10"  
Top Elev.=205.80  
See Sheet Nos. 26, 31 & 32

Prop. SS MH  
Top Elev.=207.3  
E In=193.85 (E)  
E Out=193.85 (W)

SWS LINE NO. 2A COORDINATE LIST		
POINT	NORTH	EAST
110	385891.6702	2370315.4045
111	385893.6033	2370491.3945

SWS LINE NO. 2A

SCALE: 1"=20'



Sta. 30+00.0 SWS Line No. 3=  
Sta. 18+25.00 @ Frederic, 20.67' LI.  
Construct Std. Type 1A Curb Inlet  
L=5'-0", W=3'-0"  
Top Elev.=207.11  
Install 41.3 L.F. 15" RCP (W)  
See Sheet Nos. 24 & 33

Sta. 28+91.5 SWS Line No. 3  
Install 108.5 L.F. 15" RCP  
(Including End Section)

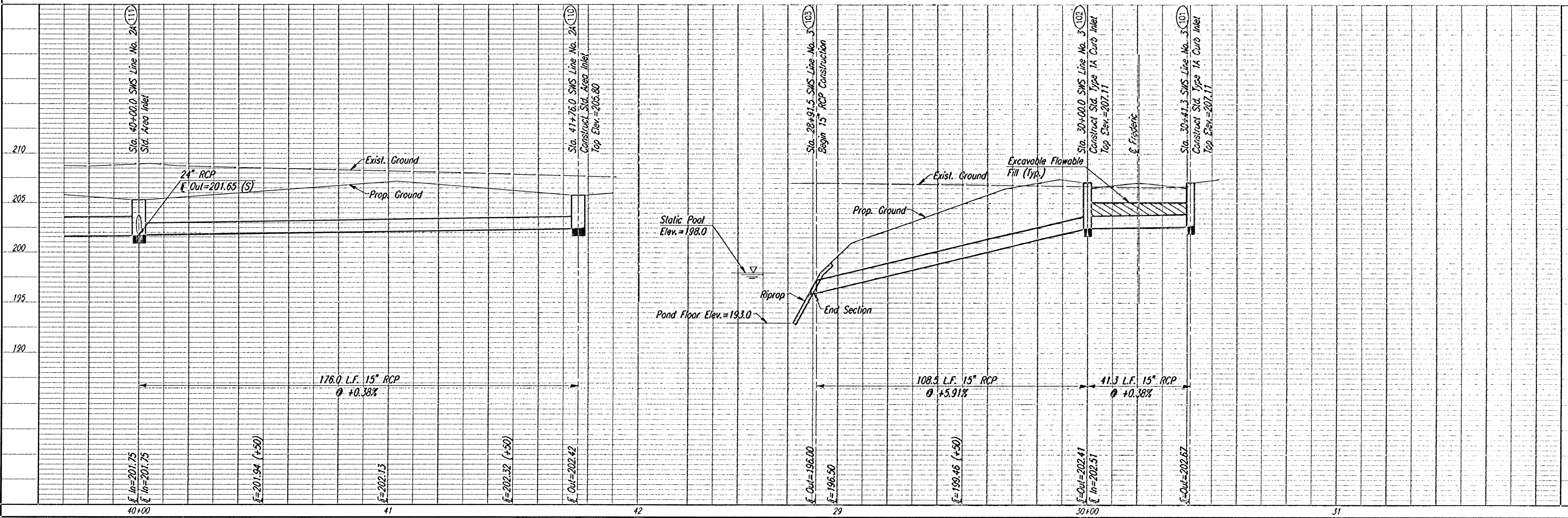
Sta. 30+41.3 SWS Line No. 3=  
Sta. 18+25.00 @ Frederic, 20.67' RL.  
Construct Std. Type 1A Curb Inlet  
L=5'-0", W=3'-0"  
Top Elev.=207.11  
See Sheet Nos. 24 & 33

Install 16 S.Y.  
Light Stone Riprap  
See Sheet No. 23

Install 37.0 L.F.  
Excavatable Flowable  
Fill to Elev. 205.11

SWS LINE NO. 3 COORDINATE LIST		
POINT	NORTH	EAST
101	385505.3793	2370293.6315
102	385505.8533	2370334.9685
103	385550.7483	2370434.1185

SWS LINE NO. 3



REMNON PLACE-PHASE I  
SWS LINE NO. 2A  
STA. 40+00.0 TO STA. 41+76.0  
SWS LINE NO. 3  
STA. 28+91.5 TO STA. 30+41.3  
C.D.W. PROJ. NO. 468-76-245-8375-000-000-001

Professional Engineering Consultants, P.A.  
303 S. TORBEN - WICHITA, KANSAS 67202  
316-262-2601 • FAX 316-262-3003

Job No. 01158  
Date: JUNE 2001

Designed by: BER  
Drawn by: BJS

Sheet 21 of 58

i: 2001/01158/swsln3.dgn  
Date Plotted: Oct. 23, 2001  
Deliver to: Brent Rensberg