

STREET IMPROVEMENTS INCLUDING INCIDENTAL DRAINAGE RICHMOND CIRCLE

FROM THE S.L. 44TH ST. S., TO AND INCLUDING CUL-DE-SAC
AND
TEMPORARY CUL-DE-SAC IMPROVEMENTS
44TH STREET SOUTH
AT THE WEST LINE OF LEGACY 2ND ADDITION
PROJECT NO. 472-83422
OCA NO. 765703

GENERAL NOTES

1. Contractor will be required to provide a minimum advance notice of twenty-four (24) hours to utility companies prior to starting any excavation as follows:

Kansas One-Call 687-2470

The Contractor must notify the following in case of an emergency:

Cox Communications	262-0661
Kansas Gas Service	383-8600
K.G.E. Electric	383-8600
Peoples Natural Gas Company	1-800-303-0357
Southwestern Bell Telephone Company	1-800-286-8313
City of Wichita Water Department	262-6000
City of Wichita Sewer Maintenance	262-6000

2. Utility service lines, poles, valve boxes, meters, and et cetera are to be adjusted as necessary by others prior to construction unless the plans specifically call for their adjustment by the Contractor or unless the plans specifically identify a utility to be adjusted by its owner during construction. Existing utilities and their location, as shown on the plans, represent the best information obtainable for design. The Contractor will be required to work around existing utilities within the right-of-way which do not conflict with proposed construction.

3. A saw cut of at least one-half the depth of existing surface courses or one-fourth the depth of existing total pavement thickness shall be provided at locations where proposed construction abuts an existing surface course or pavement for which partial removal of that surface or pavement is required, except when such saw cuts are within three (3) feet of an existing joint the limits of removal shall be extended to the existing joint. Such saw cuts will not be paid for directly and this cost shall be considered as subsidiary to the removal of the surface or pavement.

4. Rubble from the removal of miscellaneous structures and excess excavation which is to be wasted shall be disposed of on sites to be provided by the Contractor. These sites shall be approved by the Engineer as to suitability, appearance and site location. Locations that, in the opinion of the Engineer, will leave an unsightly appearance will not be approved.

5. All disposal sites must be approved by the Kansas Department of Health and Environment. Material either stockpiled or disposed of in a flood plain would require a Kansas State Board of Agriculture permit. Any material dumped in waters of the United States or wetlands is subject to U.S. Corps permitting regulations. Any material buried or stockpiled beyond approved of Engineers construction limits would require additional archeological investigations unless buried in a previously approved borrow location.

6. Trees and shrubs in public right-of-way which are in direct conflict with proposed new construction shall be removed by the Contractor with the Engineer's approval. Trees and shrubs which are not in direct conflict with proposed new construction shall be saved and protected from damage.

7. The Contractor shall be responsible for preserving property irons. The Contractor will be required to re-establish any property irons which are damaged or destroyed by his construction operations. Such irons shall be re-established by a licensed land surveyor in accordance with state laws.

8. Subdivision Bench Marks shall be "Flat Survey Markers No. 8134-08 3" top diameter" provided by Kansas Blue Print Co., Inc. Bench mark installation cost to be subsidiary to curb & gutter.

9. The Contractor shall seed, fertilize and mulch all disturbed areas per City AR-78 upon completion of construction.

10. Contractor to maintain erosion control installations (put in place by sanitary sewer contractor prior to this project) and to comply with Storm Water Pollution Prevention Plan on file for this site. See sheet 4.

Bench Marks

City of Wichita Benchmark:
Square Cut, Top of south curb of 44th St. S. at the
N.E. Cor. of Lot 1, Block 2, Legacy 2nd Addition.
Elev. 1280.80 (M.S.L.)

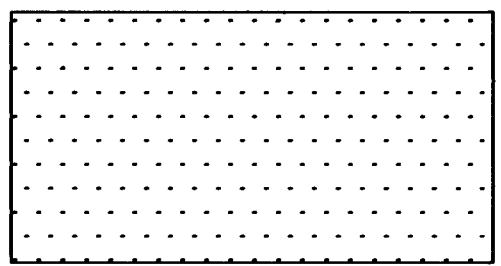
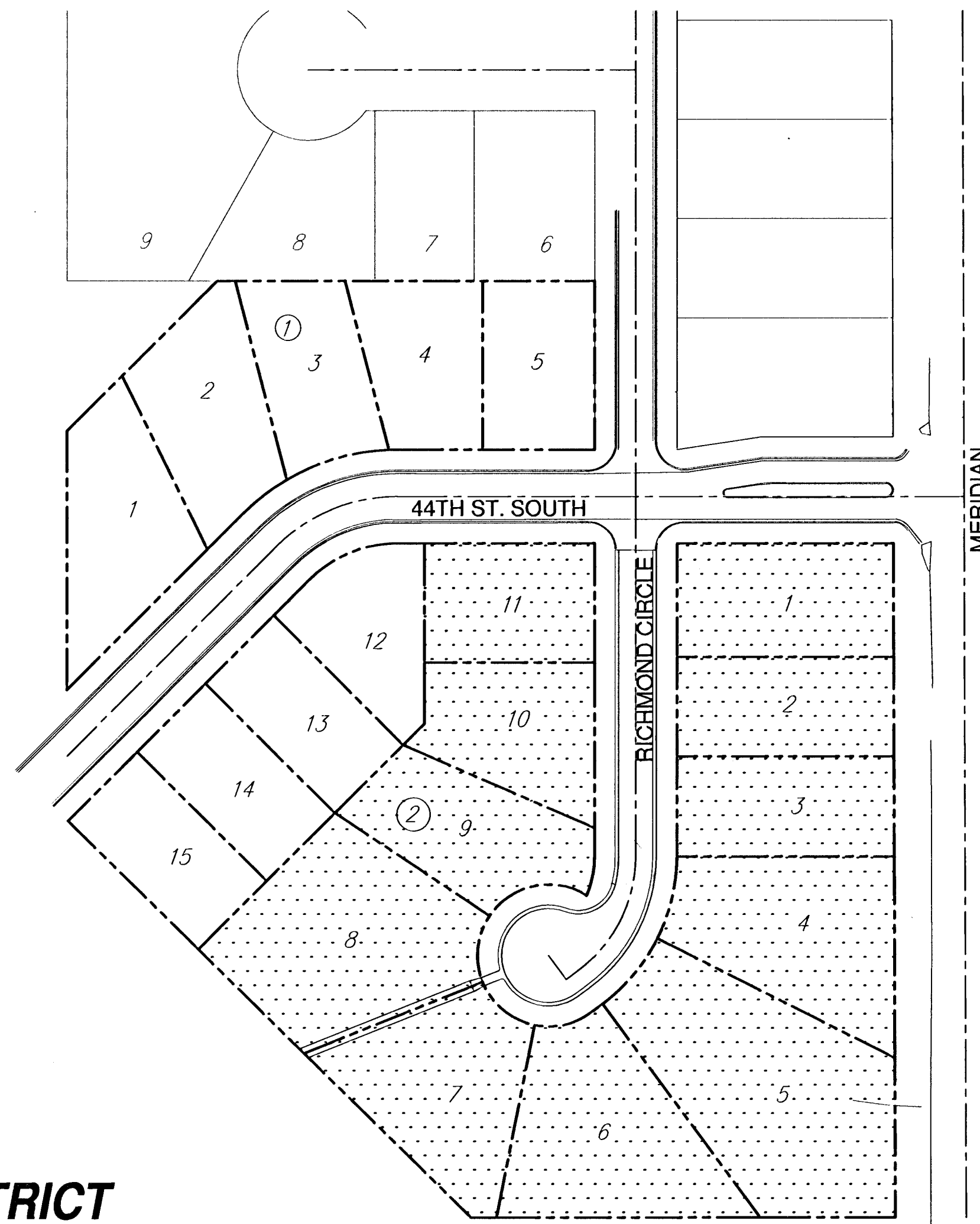
On-Site Bench Marks:

Square Cut, Top of south curb of 44th St. S. at the
N.E. Cor. of Lot 1, Block 2, Legacy 2nd Addition.
Elev. 1280.76 (M.S.L.)

Square Cut, Top of north curb 44th St. S.
at the west line of Lot 1, Block 1, Legacy 2nd
Addition. Elev. 1282.36 (M.S.L.)

INDEX

1. TITLE SHEET
2. 29' PAVEMENT DETAIL
3. SNS DETAILS
4. RICHMOND CIRCLE
5. 44TH STREET CUL-DE-SAC
- 6.-7. CROSS SECTIONS
8. STORM WATER POLLUTION PREVENTION PLAN
- 9-11. BMP DETAILS
12. PLAT



IMPROVEMENT DISTRICT

PROJECT SUMMARY

Project Length: 320 l.f.

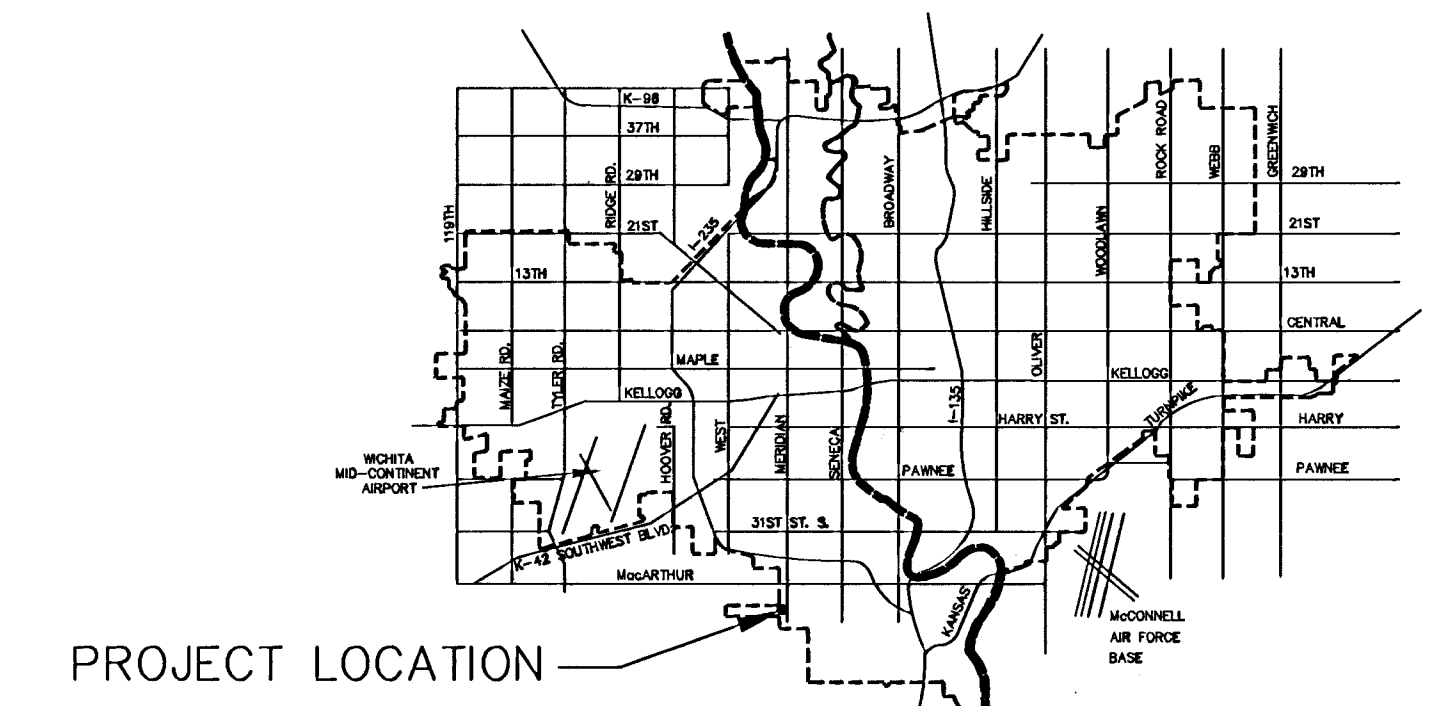
Earth Work:

Cut: 14 cu. yds.

Fill: Compacted: 400 cu. yds.

Loose: 694 cu. yds.

Borrow: Cut-Fill = -1080 cu. yds.

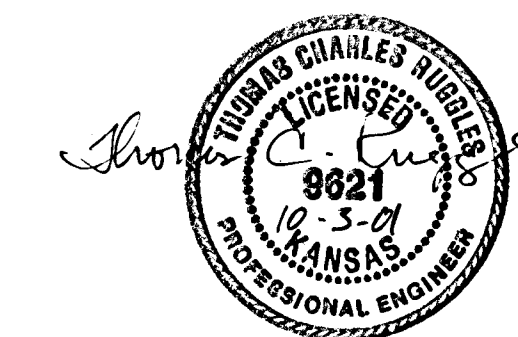


PROJECT LOCATION

VICINITY MAP



Scale: 1" = 80'



CITY OF WICHITA, KANSAS
MICHAEL E. LINDEBAK, P.E. - CITY ENGINEER