

# LEGACY 2ND ADDITION

## WICHITA, SEDGWICK COUNTY, KANSAS

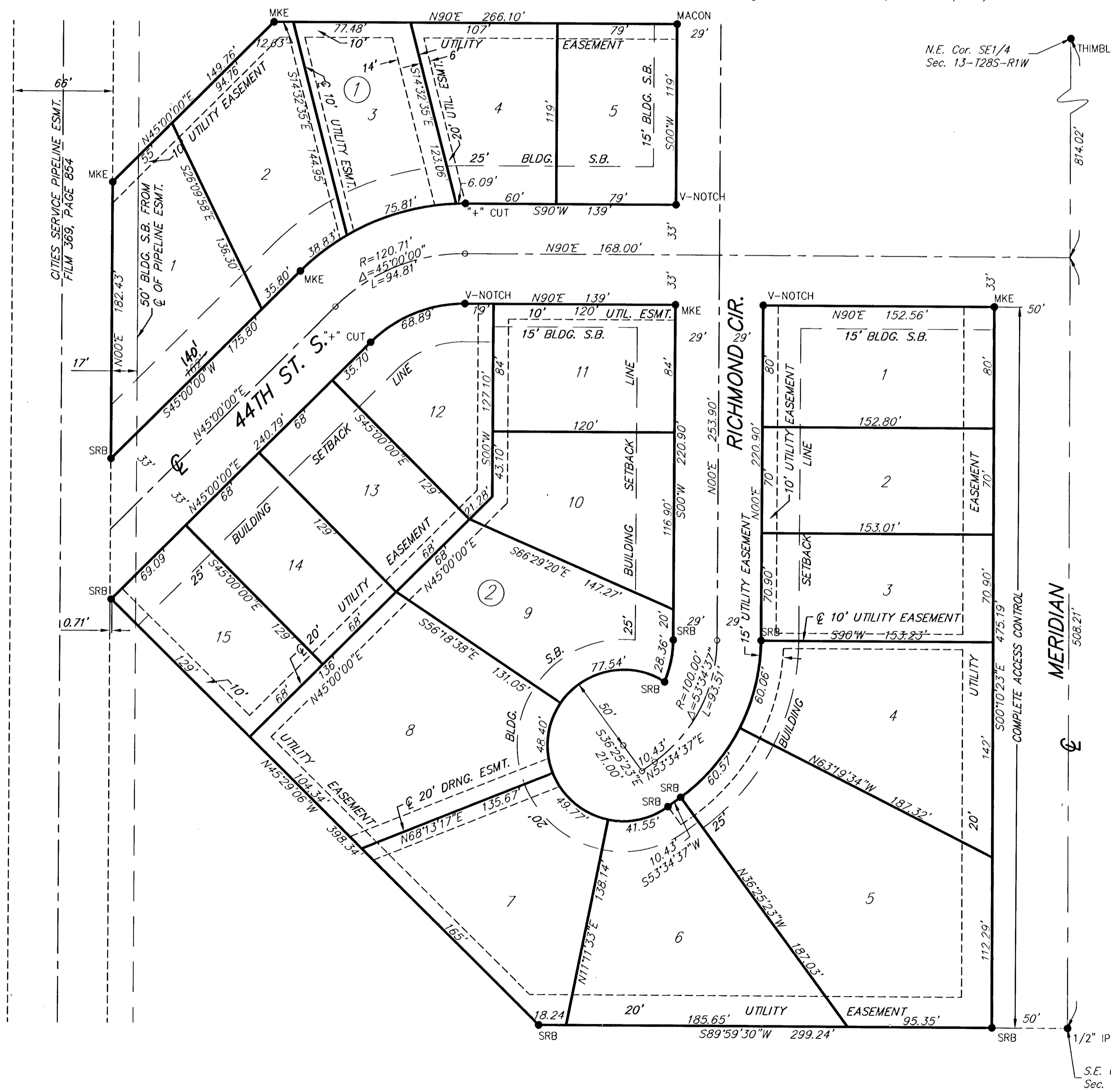
MINIMUM PAD ELEVATION FOR  
LOWEST OPENING INTO STRUCTURES,  
LOTS 1-5, BLOCK 1: 1281.9 MSL  
LOTS 1-15, BLOCK 2: 1281.9 MSL

City of Wichita Benchmark:  
44' north and 30' east of 1/4 Sec. Cor. @ Meridian and  
43rd St. South; Elev. 1280.80 (M.S.L.)

On-Site Bench Mark:  
Square Cut, Top of S. curb of 44th St. at the N.E. Cor.  
of Lot 1, Block 2, Legacy 2nd Addition.  
Elev. 1280.76 (M.S.L.)

SCALE: 1"=50'

- MACON .....=1/2" REBAR W/MACON CAP (FOUND)
- V-NOTCH .....=V-NOTCH (FOUND)
- MKE .....=1/2" REBAR W/MKE CAP (FOUND)
- SRB .....=5/8" REBAR W/SRB CAP (SET)
- + CUT .....="+ CUT (FOUND)
- 1/2" IP .....=1/2" IRON PIPE (FOUND)
- THIMBLE .....=THIMBLE WITH 1/2" IRON PIPE (FOUND)



State of Kansas) SS  
Sedgwick County)

We, Savoy, Ruggles & Bohm, P.A., Surveyors in aforesaid county and state, do hereby certify that, under the supervision of the undersigned, we have surveyed and platted "LEGACY 2ND ADDITION", Wichita, Sedgwick County, Kansas, and that the accompanying plat is a true and correct exhibit of the property surveyed, described as and being a replat of the following:

Lots 1 through 13, Block 11, and Lots 1 through 5, Block 8, The Legacy Addition, an Addition to Wichita, Sedgwick County, Kansas.

All being situated in the SE1/4 of Sec. 13, T27S, R1W of the 6th P.M., Sedgwick County, Kansas.

Existing Public easements and dedications being vacated by virtue of K.S.A. 12-512(b).

Savoy, Ruggles & Bohm, P.A.

Date \_\_\_\_\_  
Thomas C. Ruggles #940 Surveyor

Know all men by these presents that we, the undersigned, have caused the land described in the surveyor's certificate to be platted into Lots and Blocks, to be known as "LEGACY 2ND ADDITION", Wichita, Sedgwick County, Kansas. The drainage easement is hereby granted as indicated for drainage purposes. The utility easements are hereby granted for the construction and maintenance of all public utilities. Access Controls are hereby granted to the appropriate governing body, as indicated on the face of the plat. A drainage plan has been developed for this plat, and all drainage easements and rights-of-way shall remain at established grades or as modified with the approval of the City Engineer, and unobstructed to allow for the conveyance of stormwater.

South Park Developers, L.C.

\_\_\_\_\_, Member  
Fred C. Caldwell  
\_\_\_\_\_, Member  
Nancy J. Caldwell

State of Kansas) SS  
Harvey County)

The foregoing instrument acknowledged before me, this \_\_\_\_\_ day of 2001, by Fred C. Caldwell and Nancy J. Caldwell, members of South Park Developers, L.C., a limited liability company,

\_\_\_\_\_, Notary Public

My Appointment Expires \_\_\_\_\_

We, the undersigned, holders of a mortgage on the above described property, do hereby consent to this plat of "LEGACY 2ND ADDITION", Wichita, Sedgwick County, Kansas.

Sedgwick State Bank

State of Kansas) SS  
Harvey County)

The foregoing instrument acknowledged before me, this \_\_\_\_\_ day of 2001, by \_\_\_\_\_ of Sedgwick State Bank, on behalf of the Bank.

\_\_\_\_\_, Notary Public

My Appointment Expires \_\_\_\_\_

This plat of "LEGACY 2ND ADDITION", Wichita, Sedgwick County, Kansas, has been submitted to and approved by the Wichita-Sedgwick County Metropolitan Area Planning Commission, Wichita, Kansas.

Dated this \_\_\_\_\_ day of \_\_\_\_\_, 2001.

Wichita-Sedgwick County Metropolitan Area Planning Commission

\_\_\_\_\_, Acting Chair  
J.D. Michaelis  
\_\_\_\_\_, Secretary  
Marvin S. Krout

This plat approved and all dedications shown hereon, accepted by the City Council of the City of Wichita, Kansas, this \_\_\_\_\_ day of \_\_\_\_\_, 2001.

At the direction of the City Council  
\_\_\_\_\_, City Manager  
Chris Cherches  
\_\_\_\_\_, City Clerk  
Pat Burnett

Reviewed in accordance with K.S.A. 58-2005 on this \_\_\_\_\_ day of \_\_\_\_\_, 2001.

\_\_\_\_\_, Deputy County Surveyor  
Sedgwick County Kansas  
Tricia L. Robello, LS #1246

Entered on transfer record this \_\_\_\_\_ day of \_\_\_\_\_, 2001.

\_\_\_\_\_, County Clerk  
Don Brace

State of Kansas) SS  
Sedgwick County)

This is to certify that this plat has been filed for record in the office of the Register of Deeds, this \_\_\_\_\_ day of \_\_\_\_\_, 2001, at \_\_\_\_\_ o'clock \_\_\_\_\_ M., and is duly recorded.

\_\_\_\_\_, Register of Deeds  
Bill Meek  
\_\_\_\_\_, Deputy  
Linda Kizzire

DWG FILE: 01956PF-JIS  
PROJECT NO. 0001956P

SRB 924 NORTH MAIN 316-264-8008  
WICHITA, KANSAS 67203 FAX 264-4621  
http://www.srb1.com E-mail: srb@srb1.com  
SAVOY, RUGGLES & BOHM, P.A.  
ENGINEERING & SURVEYING

PROJ. # 472-83422 12/12

10-00-03-01