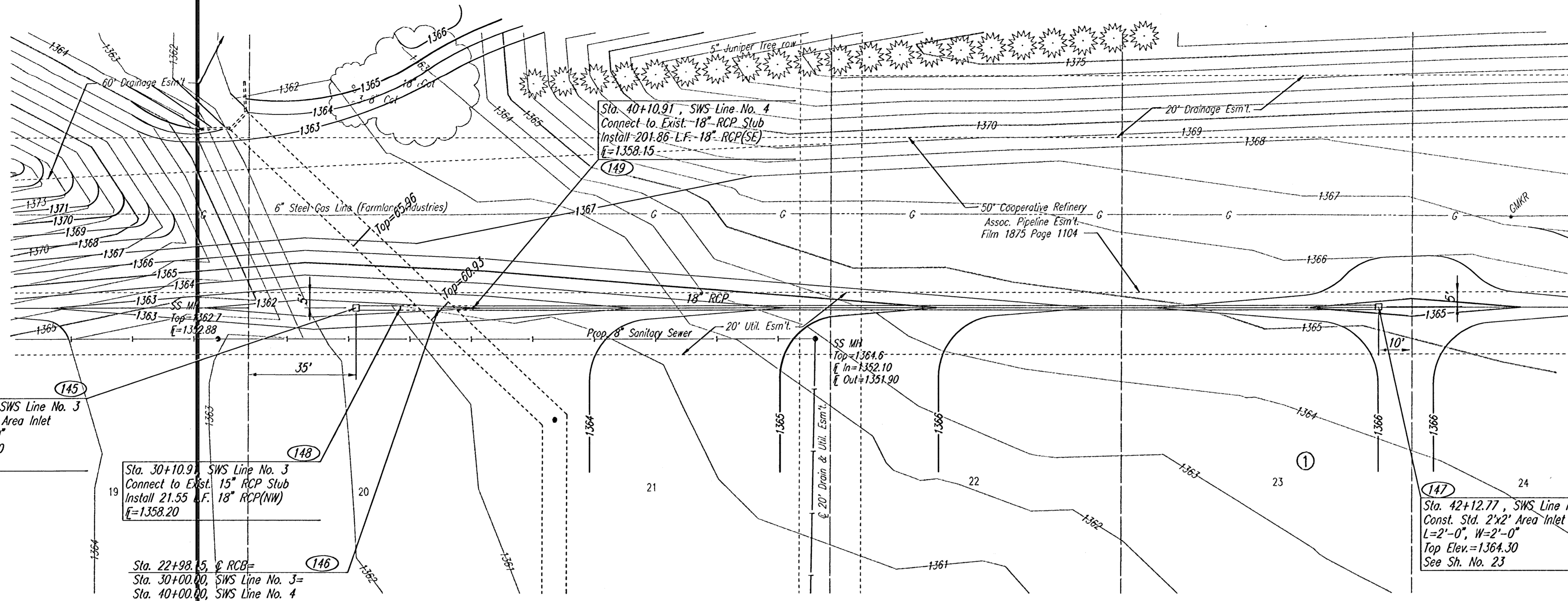


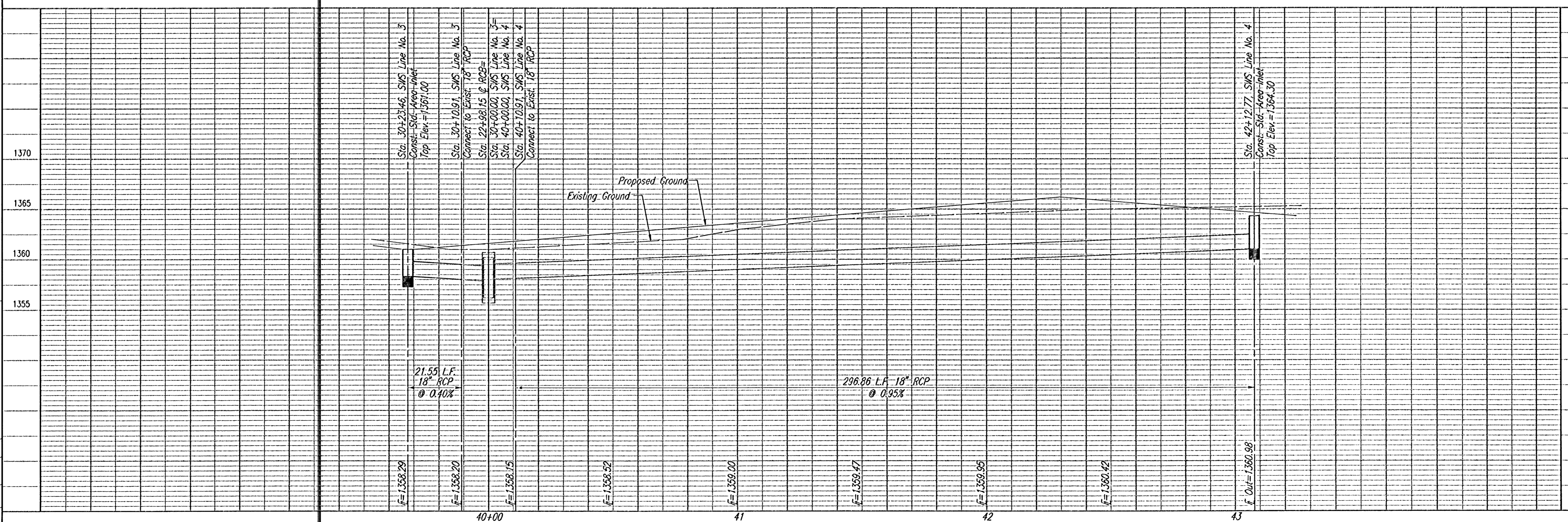
DSNR-DEP OPER. S&D SCALE: 1"=20.00
 01-2001\01-545\000\SWS\LINE3_03-13-2002_03:59:04.pm



SCALE: 1"=20'

COORDINATE LIST		
POINT	NORTH	EAST
105	378,364.1077	2,377,235.8024
119	378,366.6841	2,377,215.6136
120	378,361.5491	2,376,908.8276
121	378,676.5060	2,376,903.5554
124	377,868.0325	2,377,467.6909
123	377,908.4555	2,377,473.1062
129	377,925.4175	2,377,482.0627
130	378,036.1218	2,377,466.2355
131	378,192.6636	2,377,443.8549
132	378,360.7655	2,377,419.8209
133	377,882.3597	2,377,484.4709
136	378,367.3593	2,377,255.9480
145	378,829.3432	2,377,394.7271
146	378,811.1185	2,377,414.7864
147	378,604.7797	2,377,642.1521
148	378,819.5834	2,377,405.4694
149	378,803.6381	2,377,423.0199

①④⑤ = COORDINATE POINT NO.



BATHROP 4TH ADDITION
SWS LINE NO. 3
 STA. 30+10.91 TO STA. 30+23.46
SWS LINE NO. 4
 STA. 40+10.91 TO STA. 42+12.77
 C.O.W. PROJ. NO. 472-83468

Professional Engineering Consultants, P.A.
 303 S. TOPEKA - WICHITA, KANSAS 67202
 316-262-2691 • FAX 316-262-3003

Designed by BER
 Drawn by DEP
 Job No. 01545
 Date MARCH, 2002

Sheet 19 of 55