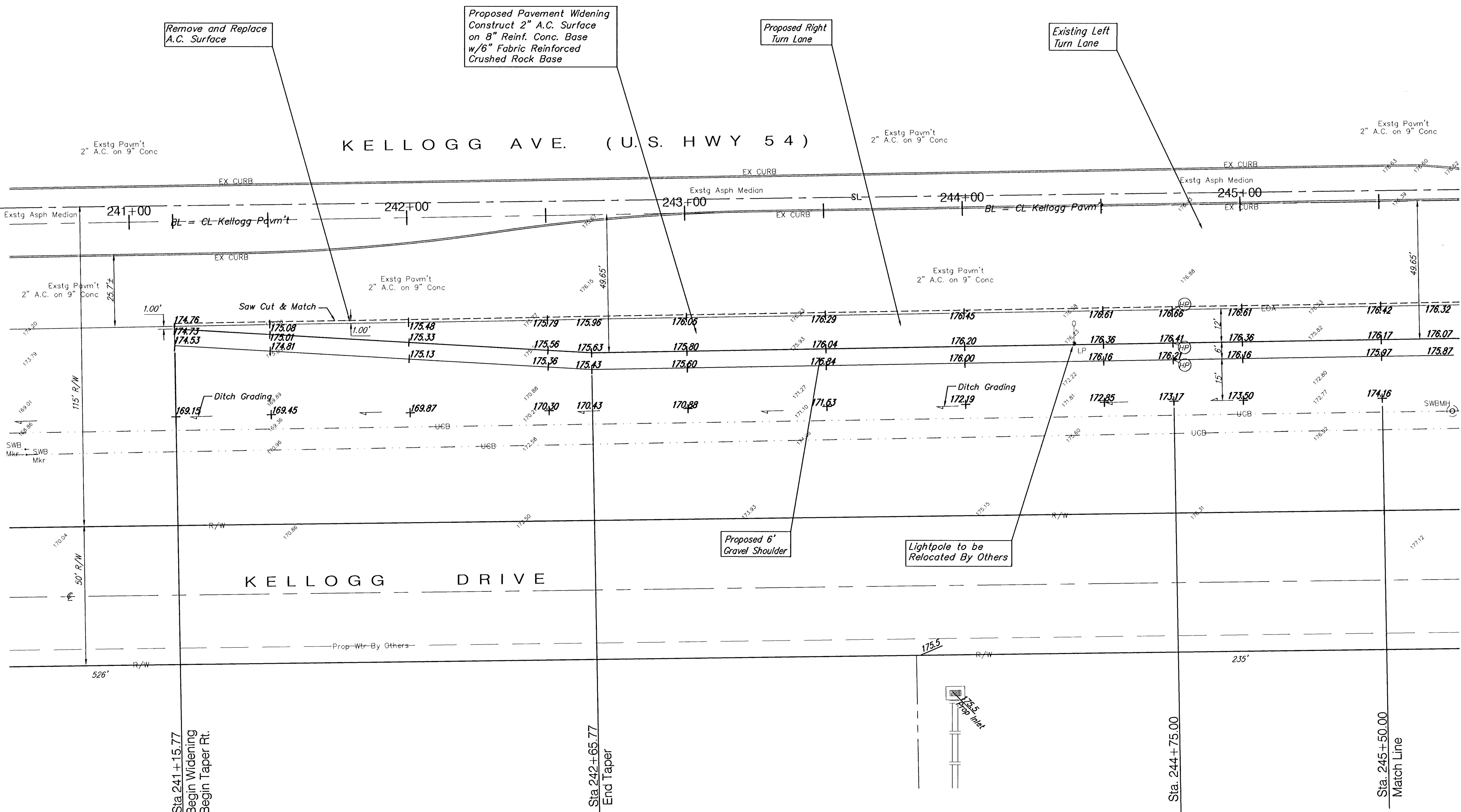


SCHOLIFIELD
HATCHETT 4TH ADDITION

SCHOLIFIELD - BROTHERS ADDITION

Sta 233+25.20



N.W. COR. NW 1/4,
SEC. 27, T27S, R2E
Sta. 233+25.20

BL = CL Kellogg Pavm't

Sta 241+15.77
Begin Widening
Begin Taper Rt.

Sta 242+65.77
End Taper

P. V.I.
ELEV.=176.66

Sta. 245+50.00
Match Line

PROJECT NUMBER 472-83372		SHEET NAME Pav01		ENGINEERING DIRECTORY F:\Kellog.gr\Pav	
DESIGN JFB/KK	DRAWN STAFF	APPROVED JFB	DATE June 01	SCALE Noted	BAUGHMAN NO 01 01 E914
ONE KELLOGG PLACE 2ND ADDITION PAVING PLAN KELLOGG AVE FROM DOWEL TO BRUNDIGE ROAD				BAUGHMAN COMPANY, P.A. ENGINEERING, SURVEYING, & PLANNING 316-262-7271 * 315 ELLIS * WICHITA, KANSAS 67211	

SHEET
5
OF
46