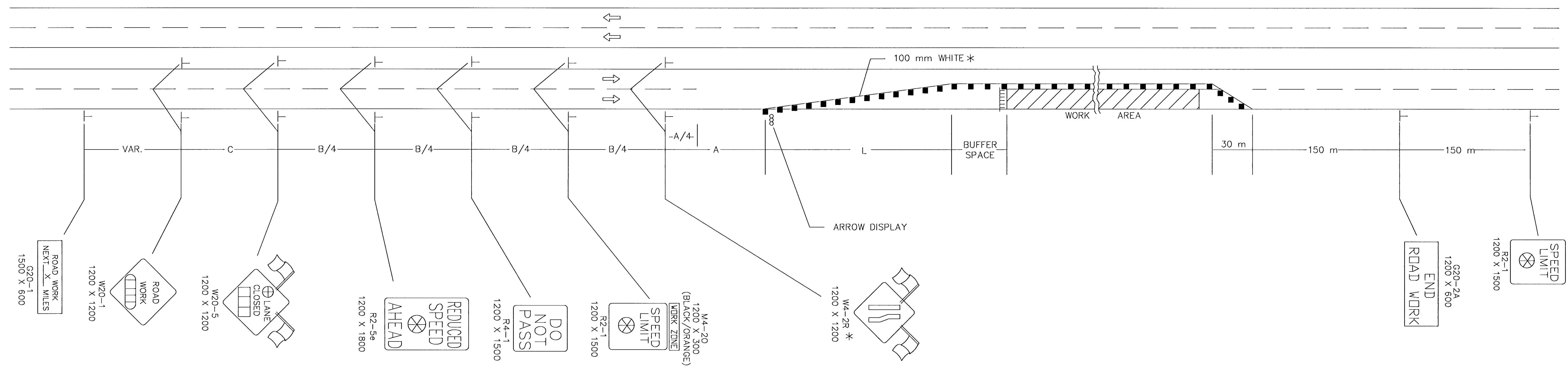


FHWA REGION NO.	STATE	PROJECT NO.	YEAR	SHEET NO.	TOTAL SHEETS
7	KANSAS			30	46

REFER TO STD. TE710SI FOR ADDITIONAL INFORMATION ON TRAFFIC CONTROL SIGNS AND SIGN SPACING.
REFER TO STD. TE702SI FOR INFORMATION ON TAPERS AND CHANNELIZING DEVICES.
REFER TO STD. TE700SI FOR LENGTH OF BUFFER SPACE.



LEFT-SIDE SIGNS SHALL BE OMITTED FOR A FOUR-LANE UNDIVIDED HIGHWAY.

A TRAILER OR TRUCK WITH AN ARROW DISPLAY MAY BE USED DURING DAYTIME IN PLACE OF THE ARROW DISPLAY. THE TRUCK SHOULD BE LOCATED BETWEEN THE BUFFER SPACE AND THE WORK AREA.

* FOR LEFT LANE CLOSURES USE W4-2L AND YELLOW EDGE LINE ALONG CHANNELIZING DEVICES.

- Channelizing Devices
- ||| Type III Barricades
- AHEAD, 1500 FT Or 1 MILE
- ⊗ Speed To Be Determined By The Engineer
- AHEAD, 1000 FT, 1500 FT Or 1/2 MILE
- X Length To The Nearest Whole Mile
- ⊕ RIGHT OR LEFT

3				
2				
1				
NO.	DATE	REVISION	BY	APP'D

**KANSAS DEPARTMENT OF TRANSPORTATION
TYPICAL TRAFFIC CONTROL
FOUR-LANE HIGHWAY
ONE LANE CLOSED**

TE744SI **9/1/00**

FHWA APPROVAL	9-1-00	APP'D: Michael P. McKenna
DESIGNED: L.E.R.	DETAILED: B.A.H.	QUANTITIES: TRACED
DESIGN CK.	DETAIL CK.	QUAN. CK. TRACE CK.