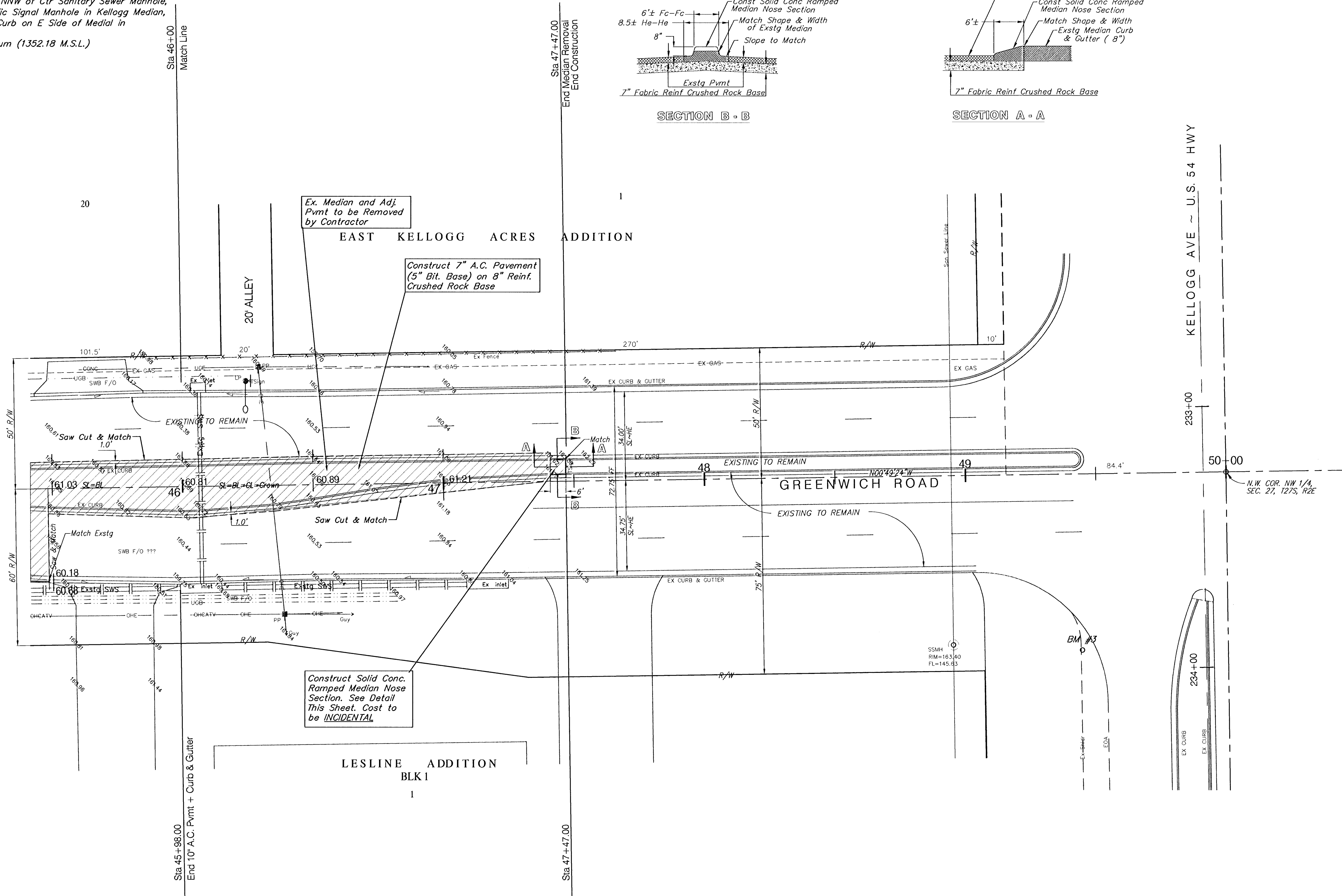
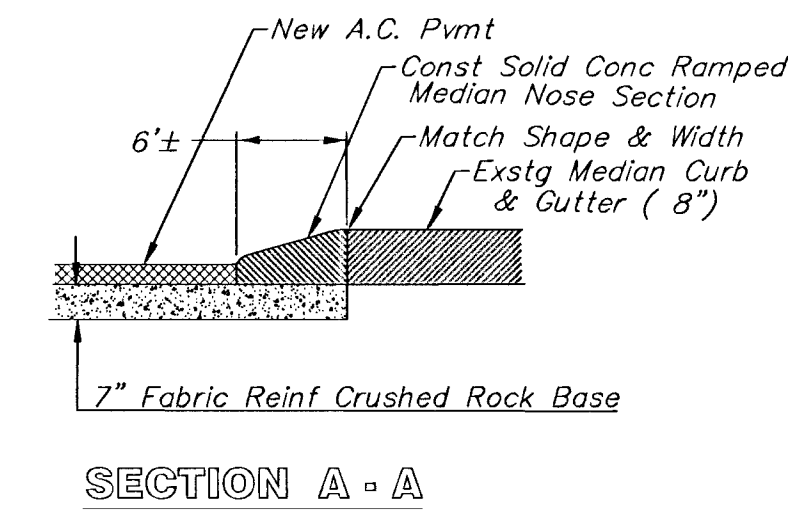
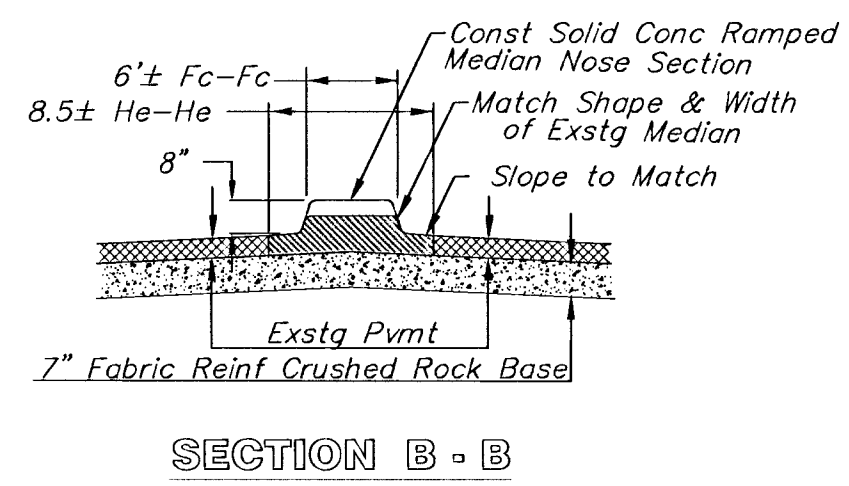
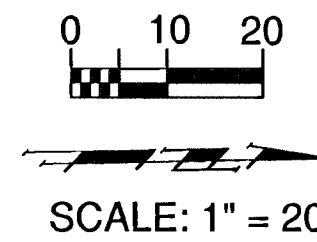


BENCHMARK:

BM #3 - Greenwich Road & Kellogg
 City of Wichita Bench Mark Disc, NW Corner of Traffic Signal
 Light Pole Base, 48.00' NNW of Ctr Sanitary Sewer Manhole,
 48.70' S of Ctr of Traffic Signal Manhole in Kellogg Median,
 70.50' E of back of E Curb on E Side of Medial in
 Greenwich Rd.
 Elev. = 164.78 City Datum (1352.18 M.S.L.)



Ex. Median and Adj. Pvmt to be Removed by Contractor

Construct 7" A.C. Pavement (5" Bit. Base) on 8" Reinf. Crushed Rock Base

Construct Solid Conc. Ramped Median Nose Section. See Detail This Sheet. Cost to be INCIDENTAL

Note:
 Pavement, Sidewalks, and Etc. To Be Removed Are Indicated By:

PROJECT NUMBER 472 - 83370		SHEET NAME PAV03 GREN		ENGINEERING DIRECTORY F:\Kellog.gr\greenwich\Pay	
DESIGN JFB/KK	DRAWN TCA	APPROVED JFB	DATE JUNE01	SCALE 1:20	BAUGHMAN NO 01 06 E045

ONE KELLOGG PLACE 2ND ADDN
PAVING PLAN
 GREENWICH ROAD FROM GILBERT TO KELLOGG AVE

BAUGHMAN COMPANY, P.A.
 ENGINEERING, SURVEYING, & PLANNING
 316-262-7271 • 315 ELLIS • WICHITA, KANSAS 67211

SHEET
 9
 OF
 43