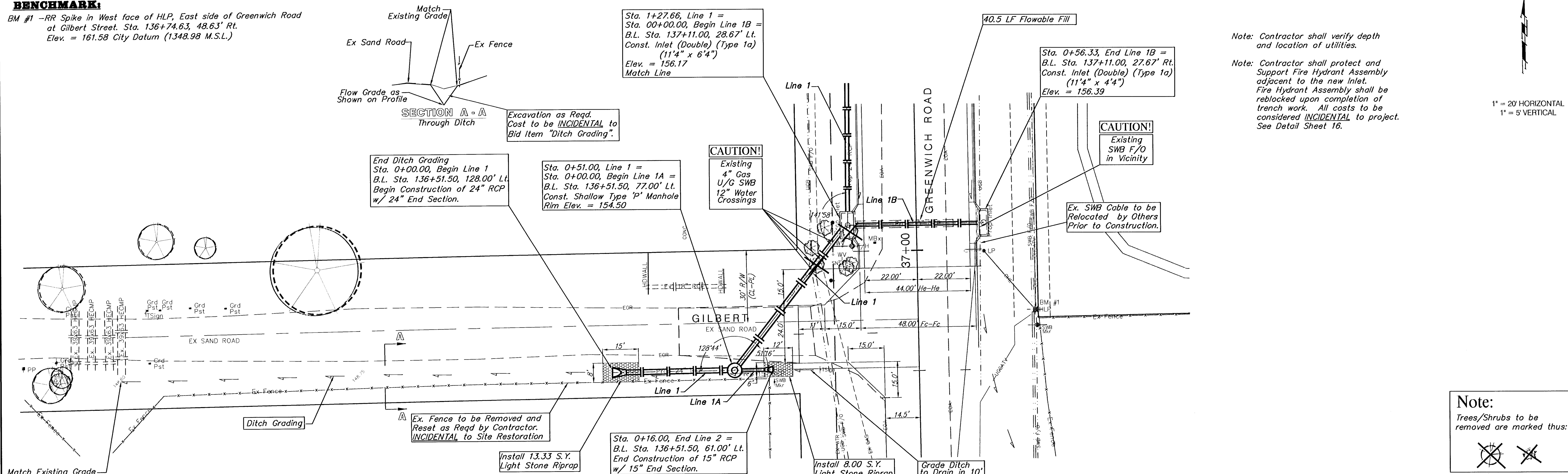


BENCHMARK:

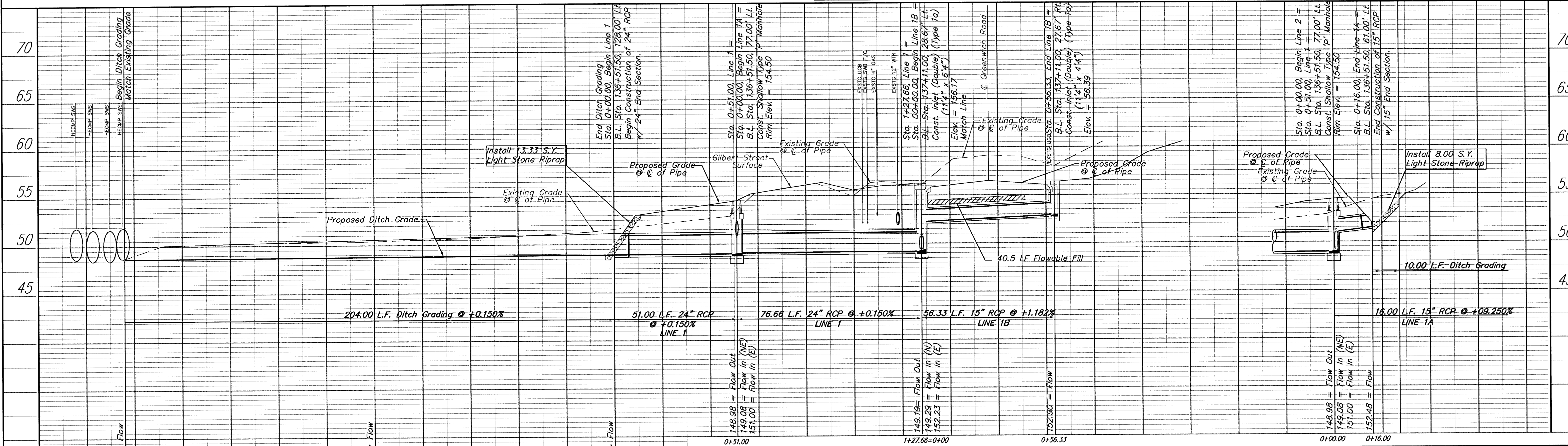
BM #1 -RR Spike in West face of HLP, East side of Greenwich Road at Gilbert Street. Sta. 136+74.63, 48.63' Lt. Elev. = 161.58 City Datum (1348.98 M.S.L.)



Note: Contractor shall verify depth and location of utilities.

Note: Contractor shall protect and Support Fire Hydrant Assembly adjacent to the new Inlet. Fire Hydrant Assembly shall be reblocked upon completion of trench work. All costs to be considered INCIDENTAL to project. See Detail Sheet 16.

Note: Trees/Shrubs to be removed are marked thus:



PROJECT NUMBER 472 - 83370		SHEET NAME SWS01		ENGINEERING DIRECTORY F:\Kellogg.gr\greenwich\sws	
DESIGN JFB/KK	DRAWN TCA	APPROVED JFB	DATE JUNE01	SCALE NOTED	BAUGHMAN NO 01 06 E045

ONE KELLOGG PLACE 2ND ADDN
Storm Sewer Improvements - Line 1, Line 2, & Line 3
 B.L. Sta. 136+51.50, 128.00' Lt. to Sta. 137+11.00, 27.67' Rt.
 GREENWICH ROAD FROM GILBERT TO KELLOGG AVE

BAUGHMAN COMPANY, P.A.
 ENGINEERING, SURVEYING, & PLANNING
 316-262-7271 • 315 ELLIS • WICHITA, KANSAS 67211

SHEET 10 OF 43

F:\Eng\KEL000_DRI\greenwich\sws01.dwg Mon Jul 16 20:28:41 2001