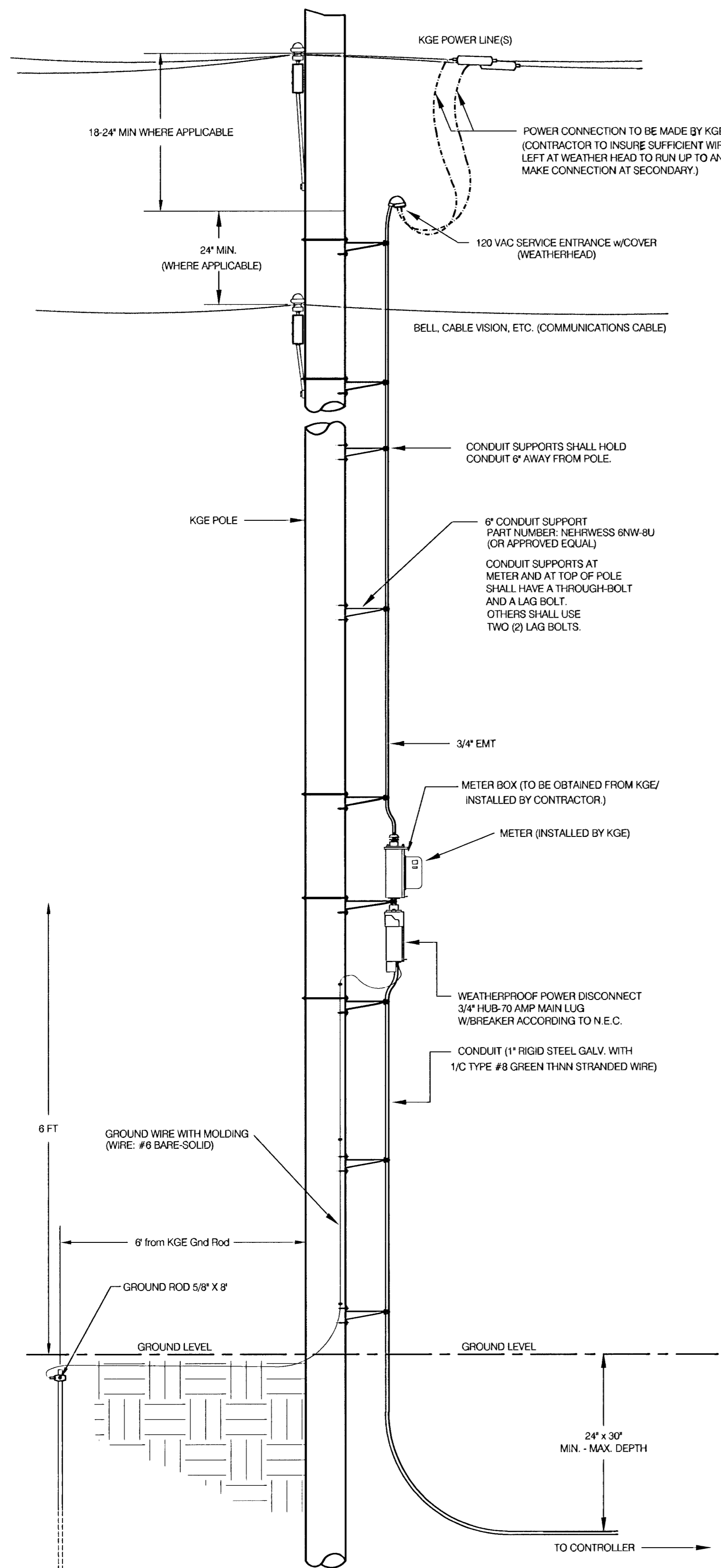


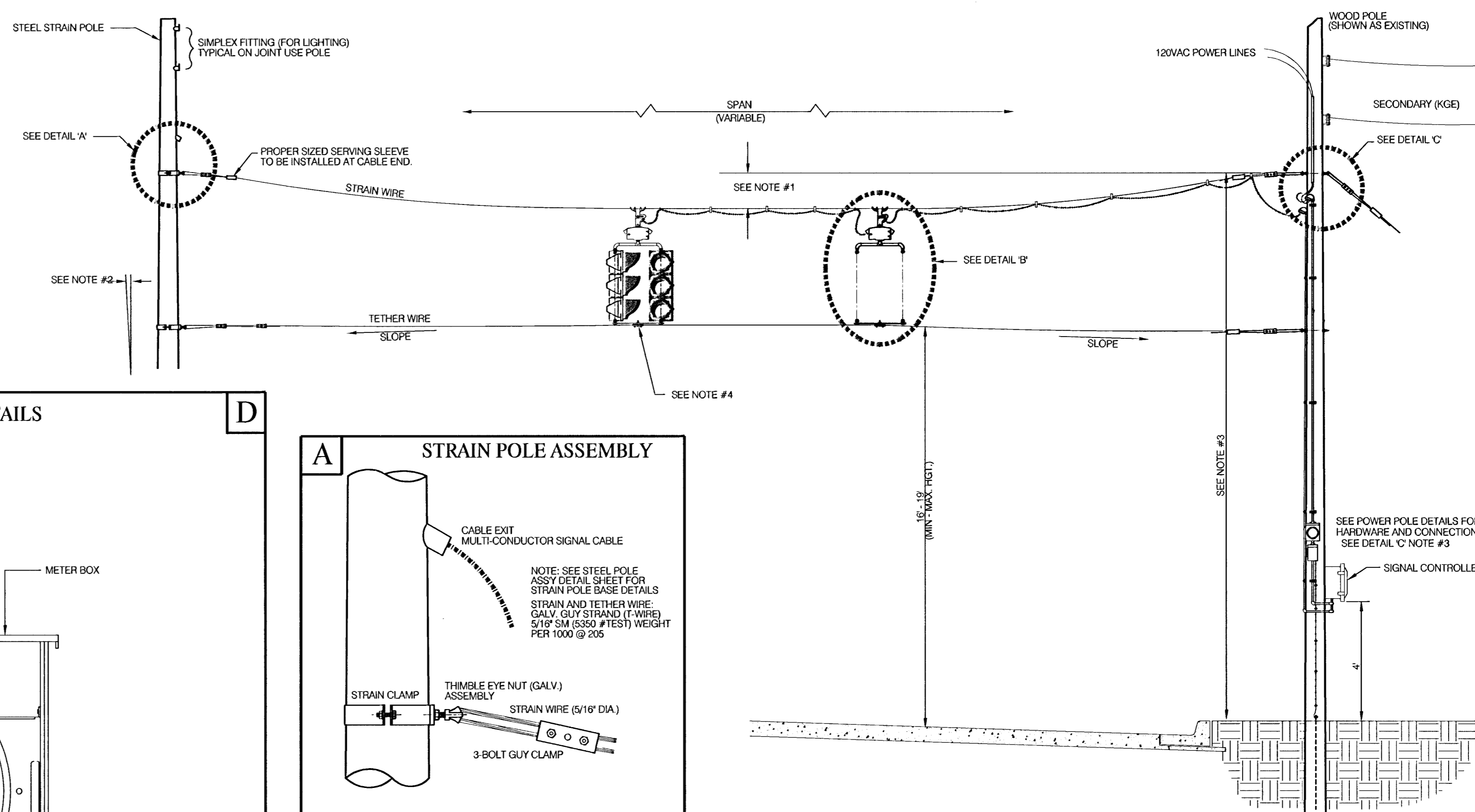
POWER POLE DETAILS



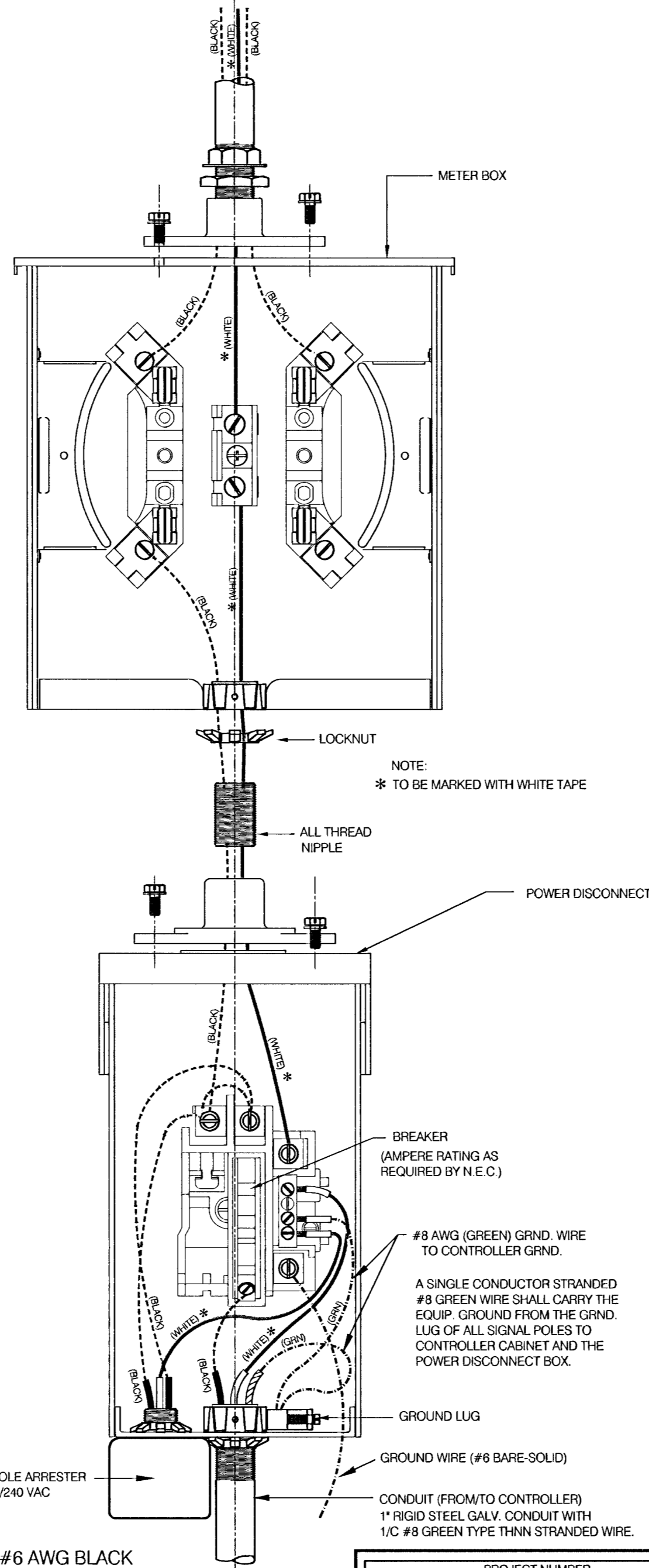
REV	DATE	COMMENTS	INT.	LIB
1	01/06	CONDUIT SUPPORT 1\"/>		

SPANWIRE ASSEMBLY DETAILS

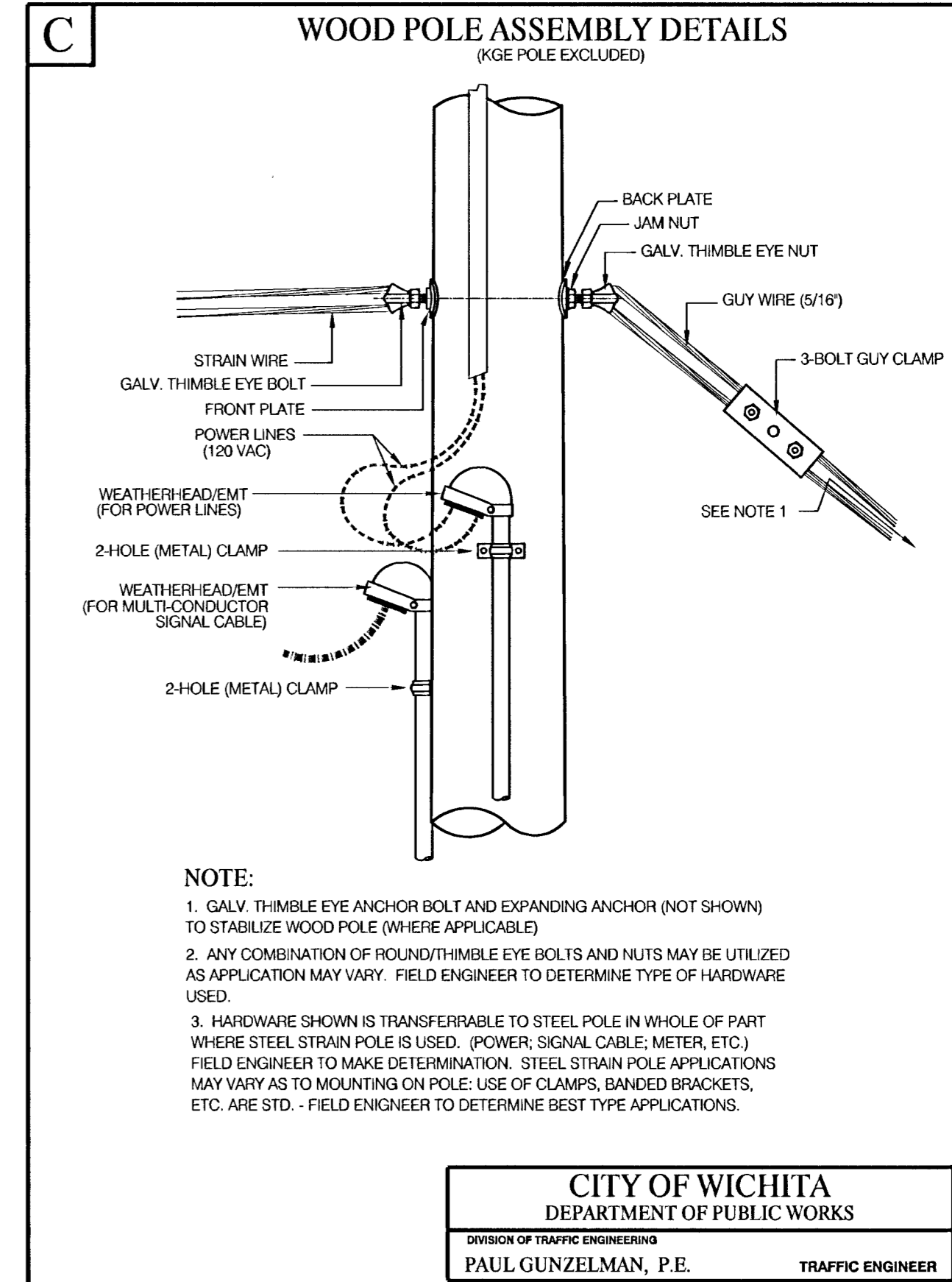
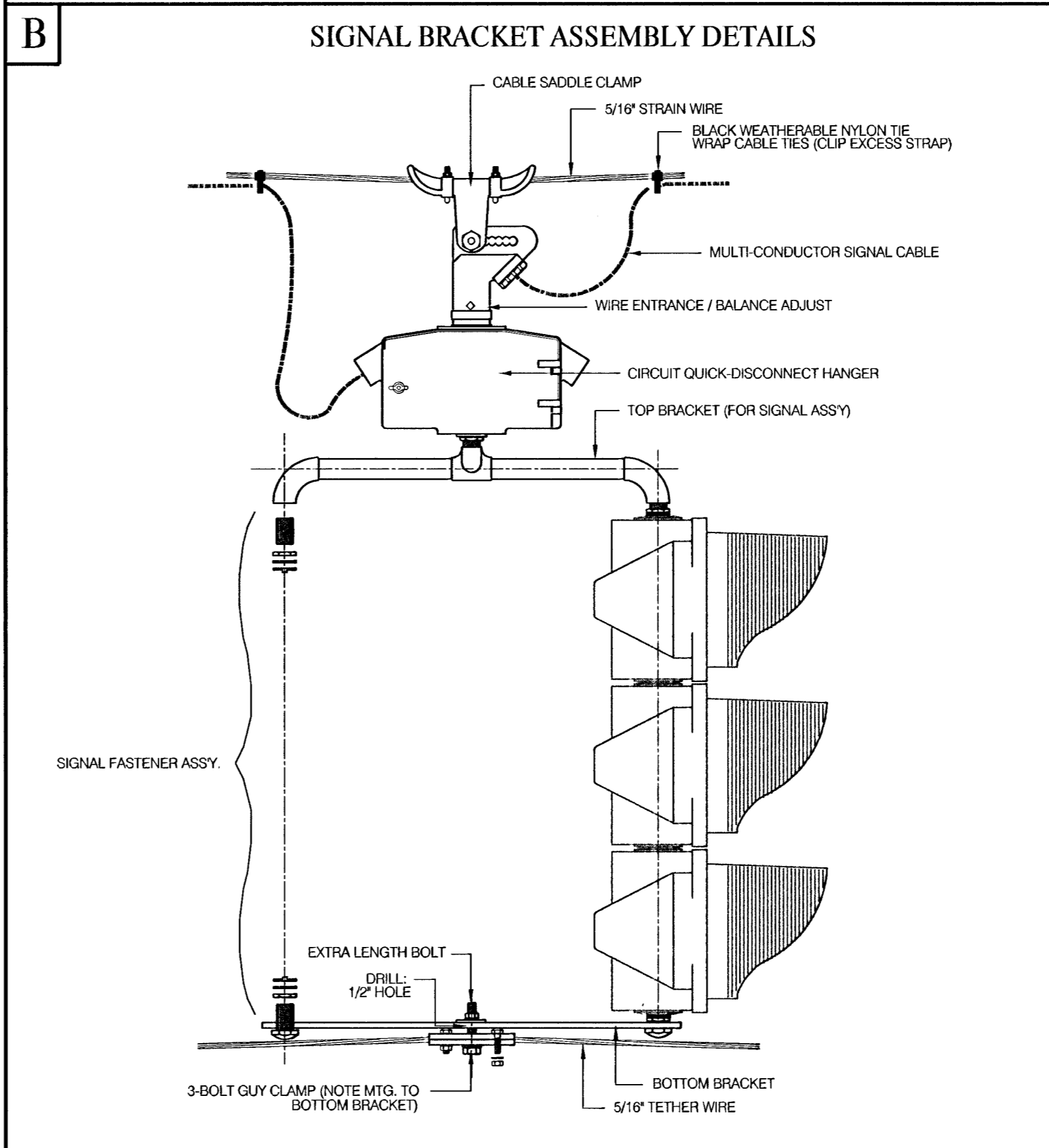
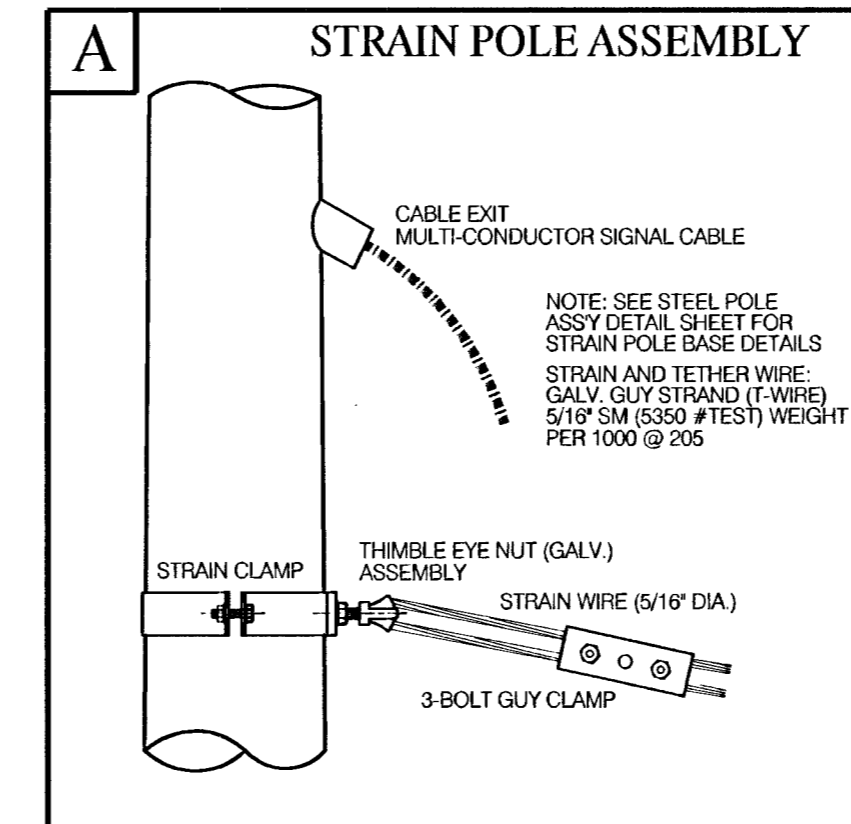
1. MAX. SAG = 5% OF SPAN.
2. STANDARD BACKRAKE = 1.5°
3. HEIGHT OF STRAIN WIRE HOOK-UP TO BE DETERMINED BY FIELD ENGINEER. TRAFFIC SIGNAL CABLE TO BE SECURED TO STRAIN (SPAN) WIRE WEATHERABLE NYLON CABLE HANGERS (12\"/>



METER BOX & POWER DISCONNECT DETAILS



POWER-#6 AWG BLACK
NEUTRAL-#6 AWG WHITE
GROUND-#8 AWG GREEN



NOTE:
1. GALV. THIMBLE EYE ANCHOR BOLT AND EXPANDING ANCHOR (NOT SHOWN) TO STABILIZE WOOD POLE (WHERE APPLICABLE).
2. ANY COMBINATION OF ROLLING THIMBLE EYE BOLTS AND NUTS MAY BE UTILIZED AS APPLICATION MAY VARY. FIELD ENGINEER TO DETERMINE TYPE OF HARDWARE USED.
3. HARDWARE SHOWN IS TRANSFERABLE TO STEEL POLE IN WHOLE OR PART WHERE STEEL STRAIN POLE IS USED. (POWER, SIGNAL CABLE, METER, ETC.) FIELD ENGINEER TO MAKE DETERMINATION. STEEL STRAIN POLE APPLICATIONS MAY VARY AS TO MOUNTING ON POLE; USE OF CLAMPS, BANDED BRACKETS, ETC. ARE STD. - FIELD ENGINEER TO DETERMINE BEST TYPE APPLICATIONS.

PROJECT NUMBER 472-83370	SHEET NAME PPSP-DTL	ENGINEERING DIRECTORY kelog_grgreenwich@traffic
DESIGN SONNY	DATE June 2001	SCALE NONE
DRAWN STAFF	APPROVED	BAUGHMAN NO 01-06-E045

**POWER POLE & SPAN POLE
STANDARD DETAILS**
One Kellogg Plaza 2nd Addition

BAUGHMAN COMPANY, P.A.
ENGINEERING, SURVEYING, & PLANNING
316-262-7271 • 315 ELLIS • WICHITA, KANSAS 67211

CITY OF WICHITA
DEPARTMENT OF PUBLIC WORKS
DIVISION OF TRAFFIC ENGINEERING
PAUL GUNZELMAN, P.E. TRAFFIC ENGINEER

SHEET **23**
OF **43**

F:\Eng\MELOS_G\greenwich\traffic\ppsp-dtl.dwg Mon Jul 16 22:23:16 2001