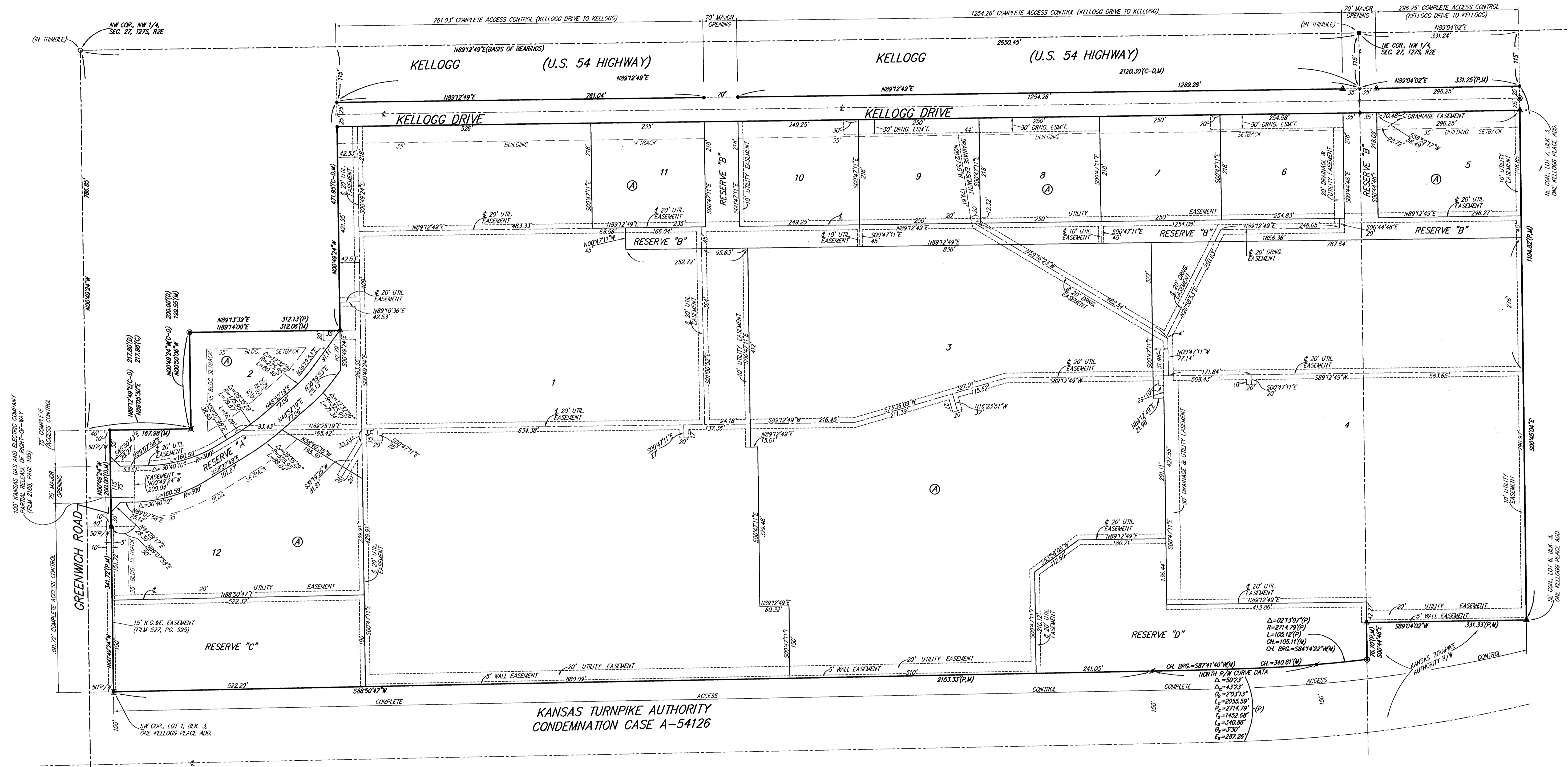


ONE KELLOGG PLACE 2ND ADDITION

WICHITA, SEDGWICK COUNTY, KANSAS



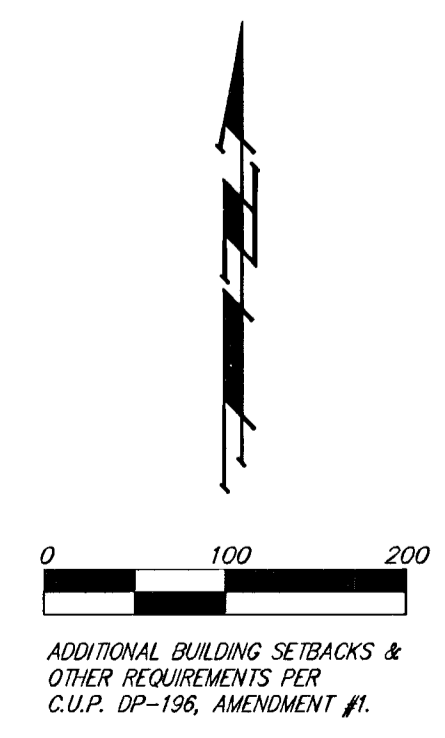
**KANSAS TURNPIKE AUTHORITY
CONDEMNATION CASE A-54126**

- = #4 REBAR W/ "BAUGHMAN" CAP (SET)
- = 3/4" IRON (FOUND)
- = #4 REBAR (FOUND)
- = #6 REBAR (FOUND)
- = #8 REBAR (FOUND)
- = #10 REBAR (FOUND)
- = #12 REBAR W/ "BOBECKE" CAP (FOUND)
- = #4 REBAR W/ "BAUGHMAN" CAP (FOUND)
- = 1" IRON (FOUND)

NOTE:
A DRAINAGE PLAN HAS BEEN DEVELOPED FOR THIS SUBDIVISION AND IS ON FILE WITH THE CITY OF WICHITA, KANSAS. DRAINAGE INTENT SHALL REMAIN AS DEPICTED OR AS MODIFIED WITH THE APPROVAL OF THE CITY ENGINEER OF THE CITY OF WICHITA, KANSAS. NO OBSTRUCTIONS WHICH IMPED THE FLOW OF THIS DRAINAGE PLAN SHALL BE ALLOWED.

LOT	BLOCK	ELEVATION
1	A	1230
3	A	1220
4	A	1220
12	A	1680

BENCHMARK:
CITY OF WICHITA BENCHMARK - SE CORNER OF INTERSECTION OF GREENWICH AND KELLOGG, NW CORNER OF LIGHT POLE BASE, 48.60' NW. OF & Q. OF SS MANHOLE, 48.70' S. OF & Q. OF TRAFFIC SIGNAL MANHOLE IN KELLOGG MEDIAN, 70.50' E. OF BACK OF E. CURB ON E. SIDE OF MEDIAN IN GREENWICH ROAD, ELEV. = 164.78 CITY DATUM (1552.19 NCHD)



A PORTION OF LOTS 2 AND 12, BLOCK A, ARE COVERED BY K.G.A.E. RIGHT-OF-WAY EASEMENT (FILM 518, PAGE 789), WHICH IS IN THE PROCESS OF BEING COMPLETED THIS 13TH DAY OF MARCH, 2001.

ADDITIONAL BUILDING SETBACKS & OTHER REQUIREMENTS PER C.U.R. 07-198, AMENDMENT #1.