

DETENTION AREA

PART OF WICHITA MUNICIPAL AIRPORT ADDITION

RESERVE D
D-24303

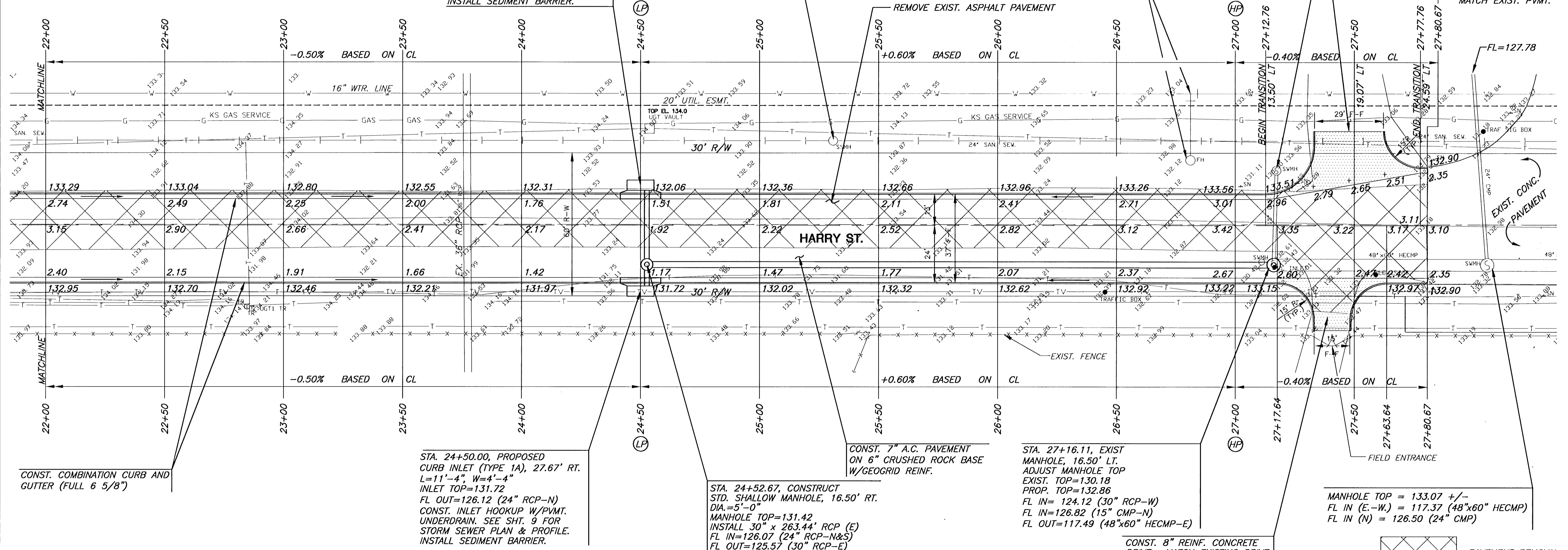
STA. 24+50.00, PROPOSED CURB INLET (TYPE 1A), 16.67' LT. L=11'-4", W=4'-4" INLET TOP=132.06 FL OUT=126.22 (24" RCP-S) CONST. INLET HOOKUP W/PVMT. UNDERDRAIN. SEE SHT. 9 FOR STORM SEWER PLAN & PROFILE. INSTALL SEDIMENT BARRIER.

MANHOLE TOP=129.09 +/- FL=117.86

BURY LINE EL. = 129.09 VALVE BOX EL. = 133.00 MANHOLE TOP = 130.130 FL OUT (S) = 126.80 (15" CMP)

CONST. 8" REINF. CONCRETE DRIVE. MATCH EXISTING DRIVE AT 39.59' LT.

STA. 27+80.67 END CONST. SAWCUT AND MATCH EXIST. PVMT.



CONST. COMBINATION CURB AND GUTTER (FULL 6 5/8")

STA. 24+50.00, PROPOSED CURB INLET (TYPE 1A), 27.67' RT. L=11'-4", W=4'-4" INLET TOP=131.72 FL OUT=126.12 (24" RCP-N) CONST. INLET HOOKUP W/PVMT. UNDERDRAIN. SEE SHT. 9 FOR STORM SEWER PLAN & PROFILE. INSTALL SEDIMENT BARRIER.

STA. 24+52.67, CONSTRUCT STD. SHALLOW MANHOLE, 16.50' RT. DIA.=5'-0" MANHOLE TOP=131.42 INSTALL 30" x 263.44' RCP (E) FL IN=126.07 (24" RCP-N&S) FL OUT=125.57 (30" RCP-E)

CONST. 7" A.C. PAVEMENT ON 6" CRUSHED ROCK BASE W/GEOGRID REINF.

STA. 27+16.11, EXIST. MANHOLE, 16.50' LT. ADJUST MANHOLE TOP EXIST. TOP=130.18 PROP. TOP=132.86 FL IN= 124.12 (30" RCP-W) FL IN=126.82 (15" CMP-N) FL OUT=117.49 (48"x60" HECMP-E)

CONST. 8" REINF. CONCRETE DRIVE. MATCH EXISTING DRIVE AT 2' NORTH OF FENCE.

MANHOLE TOP = 133.07 +/- FL IN (E.-W.) = 117.37 (48"x60" HECMP) FL IN (N) = 126.50 (24" CMP)

PART OF WICHITA MUNICIPAL AIRPORT ADDITION

DETENTION AREA

PART OF RESERVE F
D-24305



ENGINEERING CONSULTANTS
411 N. WEBB ROAD
WICHITA, KS. 67206
316-684-9600

LEARJET WAY IMPROVEMENTS
PROJECT NAME

PAVING PLANS
SHEET TITLE

JTC/GJA
DESIGN BY:

TLT/BSH
DRAWN BY:

JTC/GJA
CHECKED BY:

OCTOBER 2000
DATE

99034_E3
DRAWING NAME

7 / 14
SHEET OF

H:\CIVIL\99034\PAVE\99034_E3

H:\CIVIL\99034\PAVE\99034_E3.DWG Tue Nov 26 12:05:25 2000