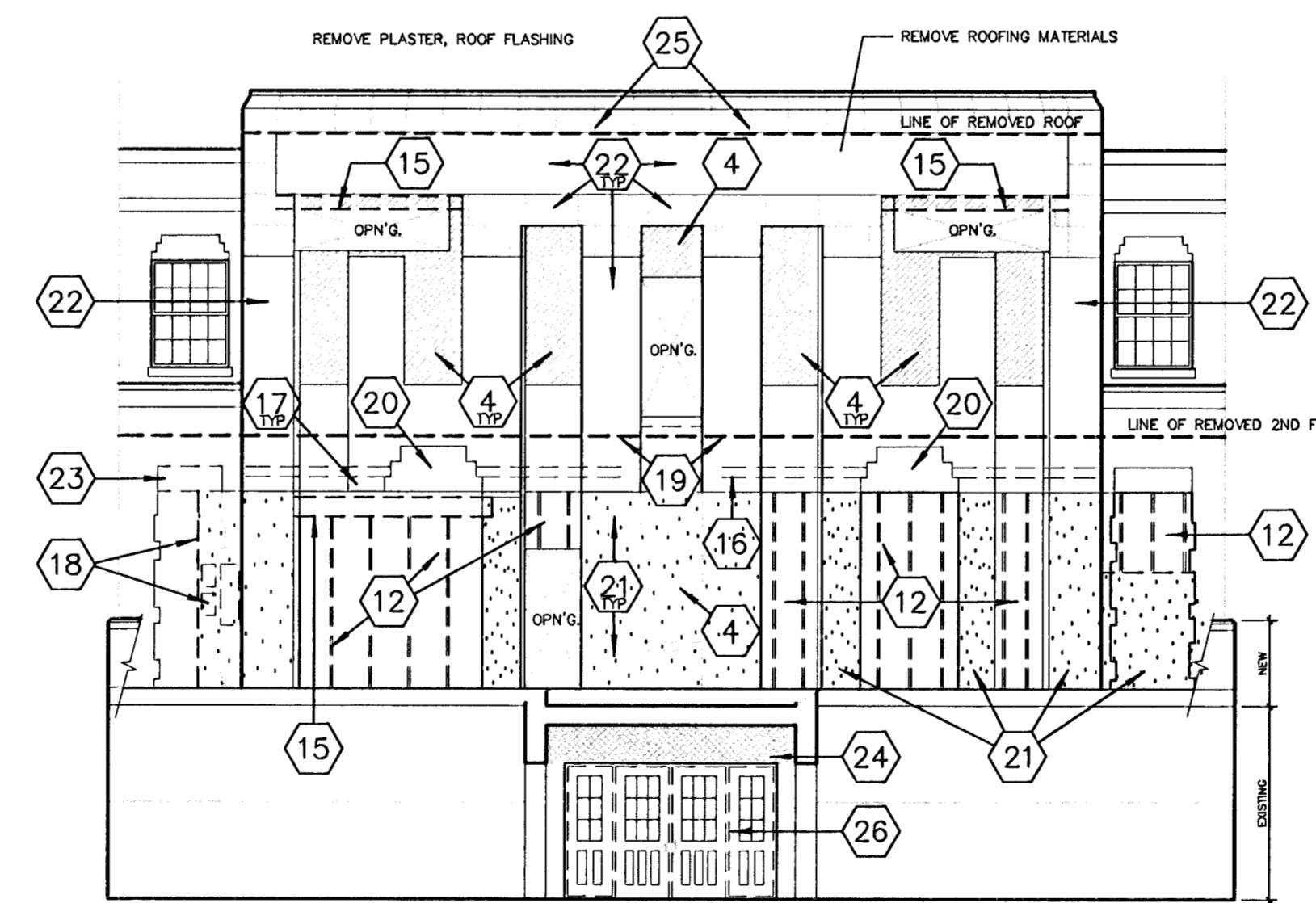


**GENERAL NOTES**

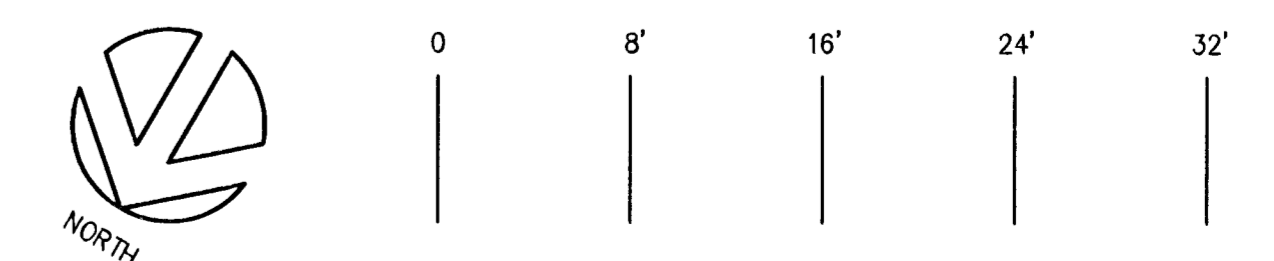
1. REFER GROUND FLOOR GENERAL NOTES.
2. BRICK REMOVED FROM EXTERIOR IS TO BE SALVAGED & CLEANED FOR RECONSTRUCTION.
3. REMOVE ABANDONED CONDUITS & PIPING FROM NORTH & SOUTH TERRACE AREAS, TYPICAL.
4. OWNER SHALL BE RESPONSIBLE FOR REMOVING ALL ASBESTOS-CONTAINING PIPE INSULATION PRIOR TO G.C. REMOVING ABANDONED PIPING.



PARTIAL SOUTH ELEVATION  
SOUTH TERRACE — EXPOSED ORIGINAL EXT. WALL  
SCALE: 1/4" = 1'-0"

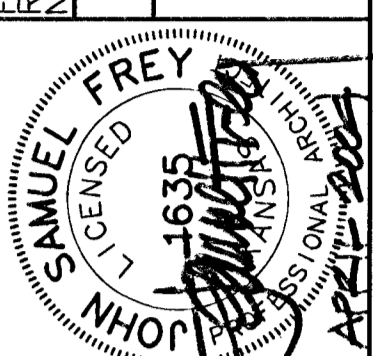
**REMOVAL NOTES**

1. REMOVE ROOF SYSTEM AND STRUCTURE.
2. REMOVE DOOR, DOOR FRAME, THRESHOLD, WOOD GROUNDS, & NON-ORIGINAL MASONRY FROM EXISTING OPENING FOR NEW WINDOW.
3. REMOVE THRU-WALL LOUVERS.
4. REMOVE MASONRY INFILL FROM ORIGINAL OPENINGS.
5. REMOVE MASONRY WALL AS SHOWN ON ELEVATIONS. SALVAGE BRICK FOR REUSE.
6. REMOVE/RELOCATE EXISTING METAL FLUE.
7. REMOVE EXISTING DOOR & FRAME AS REQUIRED FOR REPLACEMENT.
8. REFER STRUCT. FOR CONCRETE LINTEL RESTORATION NOTES.
9. REMOVE DETEIORATED VERTICAL MULLIONS AS REQUIRED FOR REPLACEMENT.
10. REMOVE BRICK ABOVE EXISTING OPENING, UP TO PRECAST LINTEL ABOVE.
11. REMOVE EXISTING DOOR & FRAME AS REQUIRED FOR MASONRY INFILL OF LIKE MATERIALS.
12. REMOVE EXISTING WOOD FRAMED INFILL.
13. REMOVE PARTITION.
14. REMOVE SHELING.
15. REMOVE EXISTING STEEL LINTEL & ASSOCIATED NON-ORIGINAL BRICK, TO RECONSTRUCT MASONRY VENEER. SHORE AS REQUIRED.
16. REMOVE FLASHING FROM PREVIOUS ROOFLINE.
17. REMOVE ALL NON-ORIGINAL BRICK.
18. REMOVE STUB WALL & ABANDONED ELECTRIC BOXES.
19. REMOVE STL. FLOOR FRAMING & NON-ORIGINAL BRICK @ BEARING POCKETS, TYPICAL.
20. PROTECT DECORATIVE LITELS FROM DAMAGE.
21. REMOVE BRICK VENEER THAT HAS BEEN PLASTERED, TO PREPARE FOR PLACEMENT OF BRICK THAT MATCHES ORIGINAL. PROVIDE SHORING AS REQUIRED TO SUPPORT VENEER ABOVE TO REMAIN. PHASE AS REQUIRED.
22. REMOVE GREEN COATING FROM MASONRY MATERIALS TO REMAIN.
23. REMOVE PRECAST CONC. & STEEL ANGLE LITELS.
24. REMOVE BRICK VENEER AS REQ'D. TO REMOVE EXISTING DETEIORATED STEEL LINTEL.
25. REMOVE PRECAST PANELS DAMAGED BY ROOF PENETRATIONS & FLASHINGS AS REQ'D.
26. REMOVE DOORS, SIDELITES & FRAME.
27. REMOVE PLASTER FROM AREA AROUND 3 MAJOR WINDOWS AS REQ'D. FOR STRUCTURAL LINTEL MODIFICATIONS.

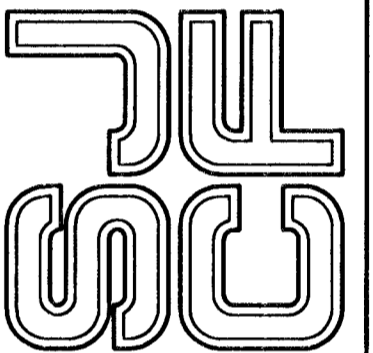


**SECOND FLOOR REMOVAL PLAN**  
SCALE: 1" = 8'-0"

PROJ. NO.	2632.10
YEAR	2004
SHEET NO.	A1-2
DATE	APRIL 2004



SCHAEFER JOHNSON COX FREY & ASSOCIATES PA  
ARCHITECTURE ENGINEERING PLANNING & INTERIOR DESIGN  
187 NORTH BROADWAY  
WICHITA, KANSAS 67202-8011  
TEL: 620-694-1711 FAX: 620-694-8805



**KANSAS AVIATION MUSEUM**  
3350 S. GEORGE WASHINGTON BOULEVARD  
WICHITA, KANSAS

REVISION DATE

PROJECT NO.  
2632.10

DATE  
APRIL 2004

**A1-2**

MT:2632.10\A1-2  
1/8" = 1'-0"