

NW Cor., NW 1/4, Sec. 26
T27S, R2E, 6TH P.M.
Set 3/8" Rebar w/ MKEC CLS 39 Id cap
Fnd. 3/8" bar 0.8d' W. of corner

KELLOGG ST/US 64
N88°43'30"E 264.14'(M)

NE Cor., NW 1/4, Sec. 26
T27S, R2E, 6TH P.M.
Fnd. 3/8" Rebar w/o Id cap
in thimble

MINIMUM PAD ELEVATIONS (LOWEST OPENINGS)			
LOTS	BLOCK	ELEVATION	
		[CITY DATUM]	(NGVD)
6	1	156.6	1344.0
7	1	156.6	1344.0
8	1	156.6	1344.0
9	1	156.6	1344.0
10	1	156.6	1344.0
11	1	156.6	1344.0
12	1	156.6	1344.0
13	1	151.6	1339.0
14	1	151.6	1339.0
15	1	151.6	1339.0
16	1	151.6	1339.0
17	1	151.6	1339.0
18	1	148.4	1335.8
19	1	148.4	1335.8
20	1	148.4	1335.8
21	1	148.4	1335.8
22	1	148.4	1335.8
23	1	148.4	1335.8
24	1	148.4	1335.8
25	1	148.4	1335.8
37	1	151.6	1339.0

BENCH MARKS

- BM #3** Railroad spike in Southwest face of power 4th pole South of Kellogg on East Side of 127th Street East, 973' South and 24' East of Northwest Corner Sec. 26, T 27 S, R 2 E. Elev. = 1353.93 (NGVD)
- BM #4** Fence T-post at Northwest corner of property, 40' East of centerline 127th And 10' South of the South Kellogg right of way. Elev. = 1360.81 (NGVD)
- BM #5** Fence T-post 10' South and 10' West of highway right of way corner, West side of K-96 Interchange and South side Kellogg, 969' East and 122' South of Northwest corner Sec. 26, T 27 S, R 2 E. Elev. = 1346.25 (NGVD)
- BM #6** Fence T-post 10' South and 10' West of highway right of way corner, East Side of K-96 Interchange and South side of Kellogg, 1690' East and 770' South of the Northwest corner Sec. 26, T 27 S, R 2 E. Elev. = 1342.08 (NGVD)
- BM #7** Fence T-post 4' South of South Kellogg right of way fence, 145' West-Southwest of the Northeast property corner, 135' West and 176' South of the North Quarter corner of Sec. 26, T 27 S, R 2 E. Elev. = 1326.40 (NGVD)

LEGEND

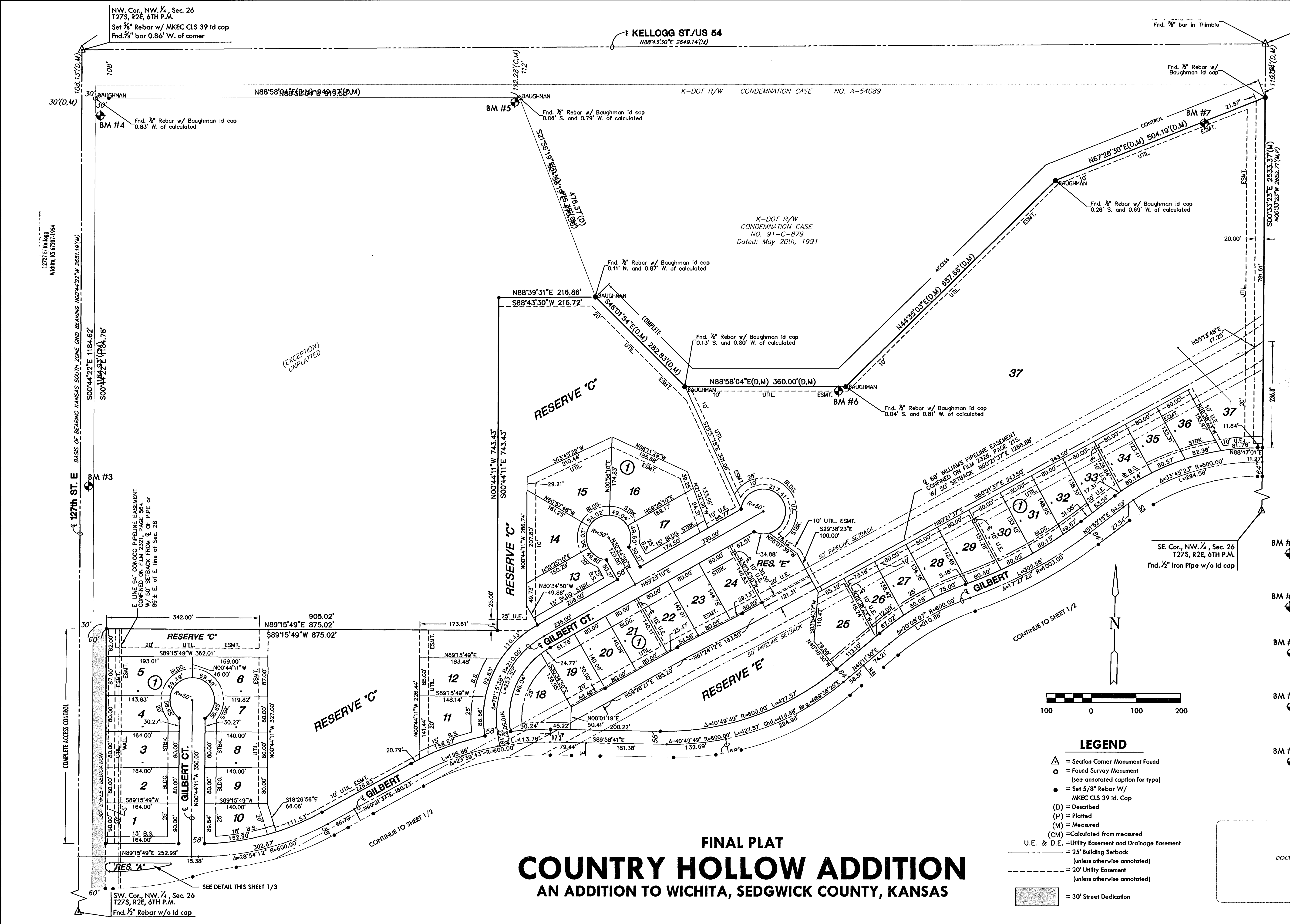
- △ = Section Corner Monument Found
- = Found Survey Monument (see annotated caption for type)
- = Set 5/8" Rebar W/ MKEC CLS 39 Id. Cap
- (D) = Described
- (P) = Platted
- (M) = Measured
- (CM) = Calculated from measured
- U.E. & D.E. = Utility Easement and Drainage Easement
- = 25' Building Setback (unless otherwise annotated)
- - - = 20' Utility Easement (unless otherwise annotated)
- ▬ = 30' Street Dedication

FINAL PLAT
COUNTRY HOLLOW ADDITION
AN ADDITION TO WICHITA, SEDGWICK COUNTY, KANSAS

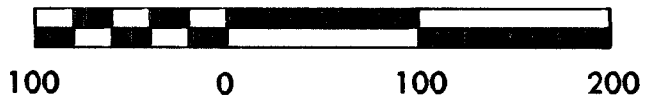


DOCUMENT NO.

J:\Civil\04429.dwg Pav Gilbert Phase 1 04429



1277 E Kellogg
Wichita, KS 67201-1954



(EXCEPTION)
UNPLATTED

SEE DETAIL THIS SHEET 1/3

CONTINUE TO SHEET 1/2

CONTINUE TO SHEET 1/2

1277th ST. E. BASIS OF BEARING KANSAS SOUTH ZONE GRID BEARING N00°44'22" W 2651.97'(M)

K-DOT R/W CONDEMNATION CASE NO. A-54089

K-DOT R/W CONDEMNATION CASE NO. 91-C-879 Dated: May 20th, 1991

E LINE 6" CONDUIT PIPELINE EASEMENT CONFINED ON FILM 2371, PAGE 564 W/ 50' SETBACK FROM E. OF PIPE OR 88 ± E. OF E. Line of Sec. 26

6" WILMANS PIPELINE EASEMENT CONFINED ON FILM 2328, PAGE 215 W/ 50' SETBACK N63°21'37"E 1288.88'

SW Cor., NW 1/4, Sec. 26
T27S, R2E, 6TH P.M.
Fnd. 1/2" Rebar w/o Id cap

SE Cor., NW 1/4, Sec. 26
T27S, R2E, 6TH P.M.
Fnd. 1/2" Iron Pipe w/o Id cap