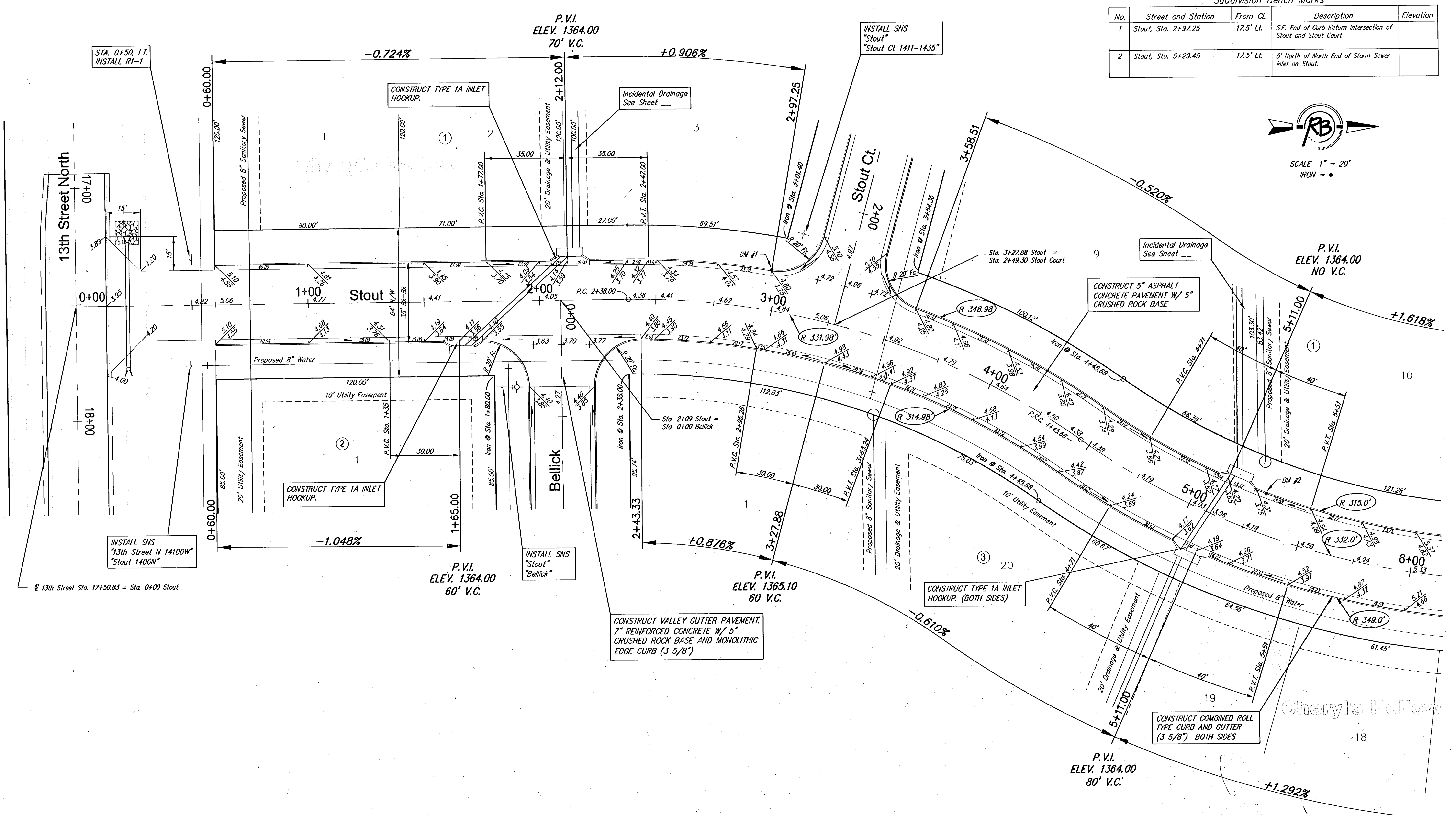


Subdivision Bench Marks

No.	Street and Station	From CL	Description	Elevation
1	Stout, Sta. 2+97.25	17.5' Lt.	S.E. End of Curb Return Intersection of Stout and Stout Court	
2	Stout, Sta. 5+29.45	17.5' Lt.	5' North of North End of Storm Sewer inlet on Stout.	



SCALE 1" = 20'
IRON = •



STA. 0+50, LT.
INSTALL R1-1

INSTALL SNS
"Stout"
"Stout Ct 1411-1435"

INSTALL SNS
"13th Street N 14100W"
"Stout 1400N"

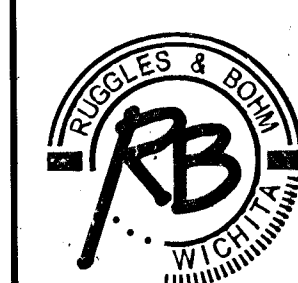
INSTALL SNS
"Stout"
"Bellick"

CONSTRUCT VALLEY GUTTER PAVEMENT.
7" REINFORCED CONCRETE W/ 5"
CRUSHED ROCK BASE AND MONOLITHIC
EDGE CURB (3 5/8")

P.V.I.
ELEV. 1364.00
80' V.C.

NOTE: ROLL TYPE CURB AND
GUTTER TO BE CONSTRUCTED ALONG
PAVEMENT DEPICTED ON THIS SHEET

Cheryl's Hollow Addition, Paving Improvements
Stout
WICHITA, KANSAS



Ruggles & Bohm, P.A.
Engineering, Surveying, Land Planning
924 North Main
Wichita, Kansas 67203
www.rbkansas.com
(316) 264-9008
(316) 264-4621 fax
E-mail: info@rbkansas.com

DESIGN	KWL	SHEET 6 OF 6
DRAWN	RA	
REVIEW		
UTILITY		

DRAWING FILE: paving {Stout 1}
PROJECT NUMBER: _____
DATE: Aug. 2, 2005