

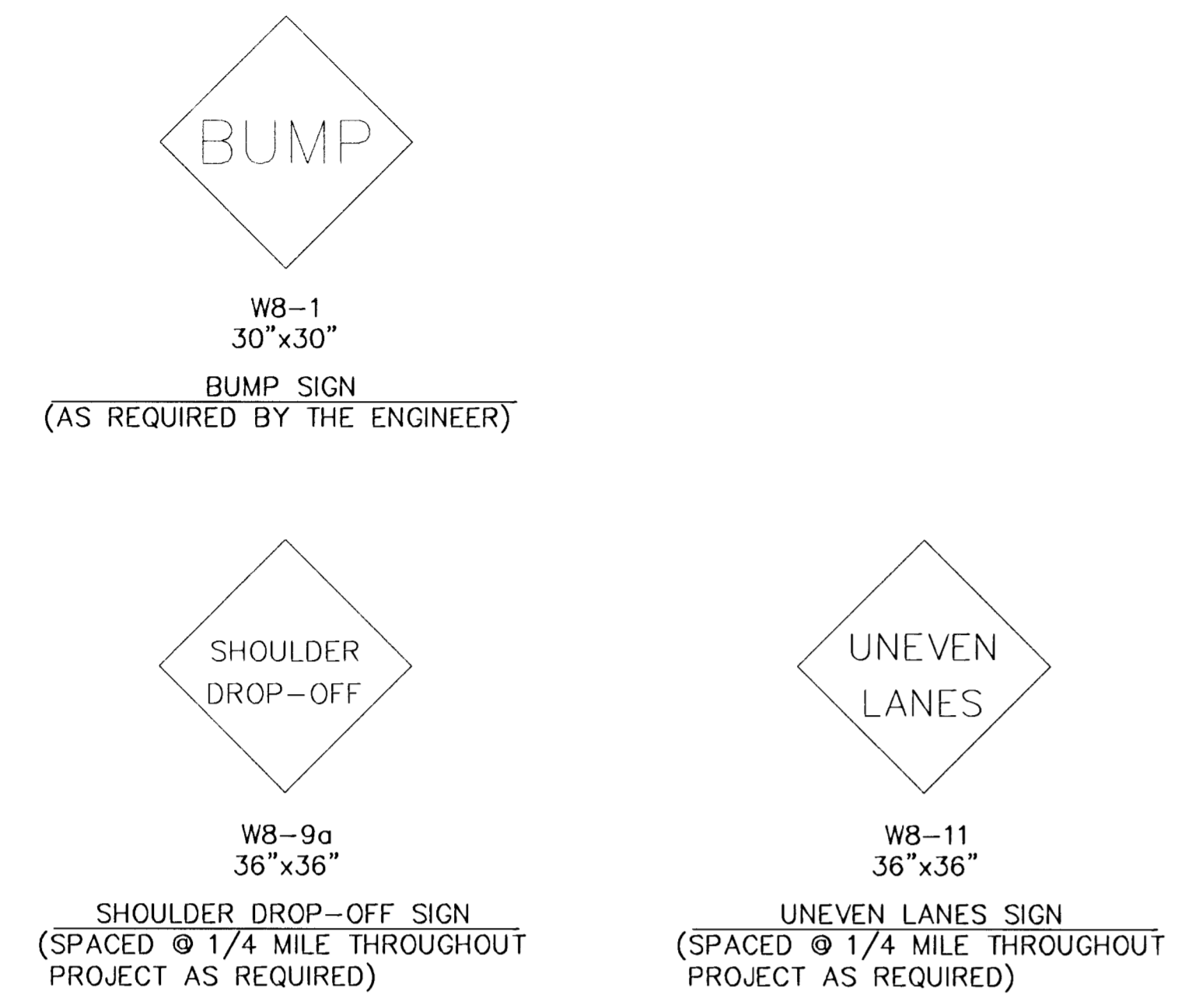
| | | | | | |
|----------|--------|----------------|-------------|-----------|--------------|
| COUNTY | STATE | PROJECT NUMBER | FISCAL YEAR | SHEET NO. | TOTAL SHEETS |
| SEDGWICK | KANSAS | | | | |

LIST OF TRAFFIC CONTROL DEVICES *

| MUTCD DEVICE NO. | NO. | FLASHERS | | REMARKS | DELINEATORS & CHANNELIZATION DEVICES | | | | | |
|------------------|-----|----------|--------|---------|--------------------------------------|-------|--------|----------|--------|--------|
| | | TYPE A | TYPE B | | DEVICE | NO. | SIZE | FLASHERS | | |
| | | | | | | | | TYPE A | TYPE B | TYPE C |
| W20-1 | 2 | | | | BARRICADES | | | | | |
| R2-5c | 2 | | | | TYPE III | | | | | |
| W20-4 | 2 | | | | TYPE II | | | | | |
| R4-1 | 2 | | | | TYPE I | | | | | |
| R2-1 | 2 | | | | DRUMS | | | | | |
| W20-7a | 2 | | | | CONES | | | | | |
| G20-2A | 2 | | | | TUBES | | | | | |
| W8-9a | | | | | VERTICAL PANELS | | | | | |
| W8-11 | | | | | SINGLE | | | | | |
| W8-1 | | | | | BACK TO BACK | | | | | |
| | | | | | PAVEMENT MARKING | WHITE | YELLOW | | | |
| | | | | | 4" BROKEN (Lin. Ft.) | | | | | |
| | | | | | 4" SOLID (Lin. Ft.) | | | | | |
| | | | | | TEMPORARY STRIPING (Line Mile) | | | | | |

* FOR INFORMATION ONLY

SEE SHEET NO. _____ FOR TRAFFIC CONTROL NOTES

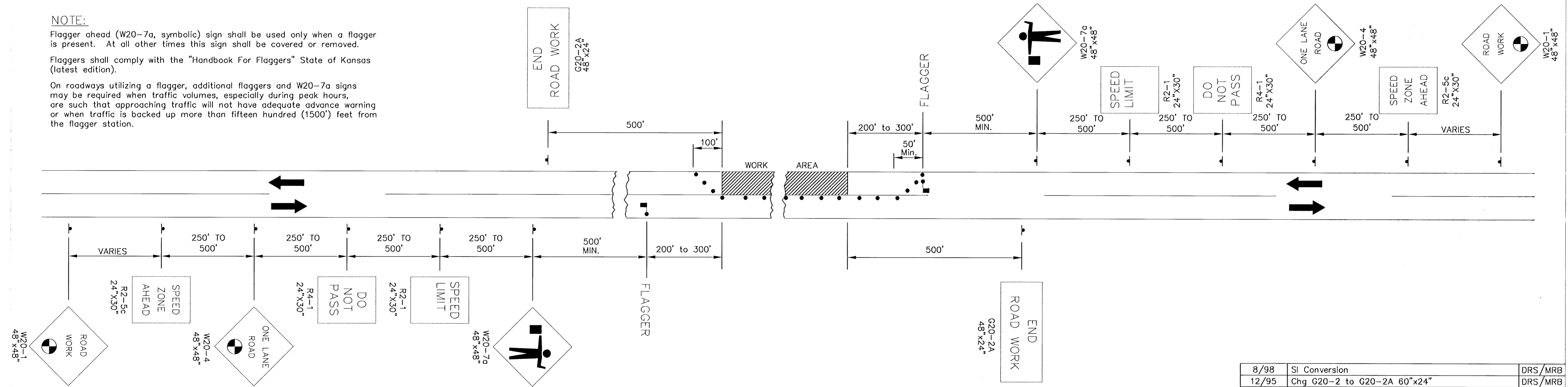


NOTE:

Flagger ahead (W20-7a, symbolic) sign shall be used only when a flagger is present. At all other times this sign shall be covered or removed.

Flaggers shall comply with the "Handbook For Flaggers" State of Kansas (latest edition).

On roadways utilizing a flagger, additional flaggers and W20-7a signs may be required when traffic volumes, especially during peak hours, are such that approaching traffic will not have adequate advance warning or when traffic is backed up more than fifteen hundred (1500') feet from the flagger station.



- Distance To Be Determined By The ENGINEER.
- Channelization devices.

TRAFFIC CONTROL PLAN FOR HANDLING ONE-LANE TRAFFIC THROUGH WORK AREA (FLAGGER)

| | | |
|-------|-------------------------------------|---------|
| 8/98 | SI Conversion | DRS/MRB |
| 12/95 | Chg G20-2 to G20-2A 60"x24" | DRS/MRB |
| 12/94 | Chg W8-9a, W20-1, G20-2 & Add W8-11 | DRS/MRB |
| Date | Description | By /Chk |

TRAFFIC CONTROL PLAN FOR ONE LANE CLOSED ON A TWO-LANE ROADWAY (FLAGGER)
T.C. NO. 3.0

| | | | | |
|---|-------|--------------------------|--------|---------|
| PREPARED BY SEDGWICK COUNTY PUBLIC WORKS HIGHWAY DEPARTMENT | | | | |
| DAVID C. SPEARS, P.E. | | DIRECTOR/COUNTY ENGINEER | | |
| REVISION | SCALE | DESIGNED | DRAWN | CHECKED |
| | NONE | M.R.B. | D.R.S. | M.R.B. |
| | DATE | 6/88 | 4/94 | 4/94 |
| DWG NAME: Q:\Blocks\Std\Tc3.dwg | | | | |