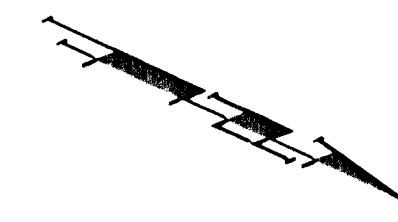


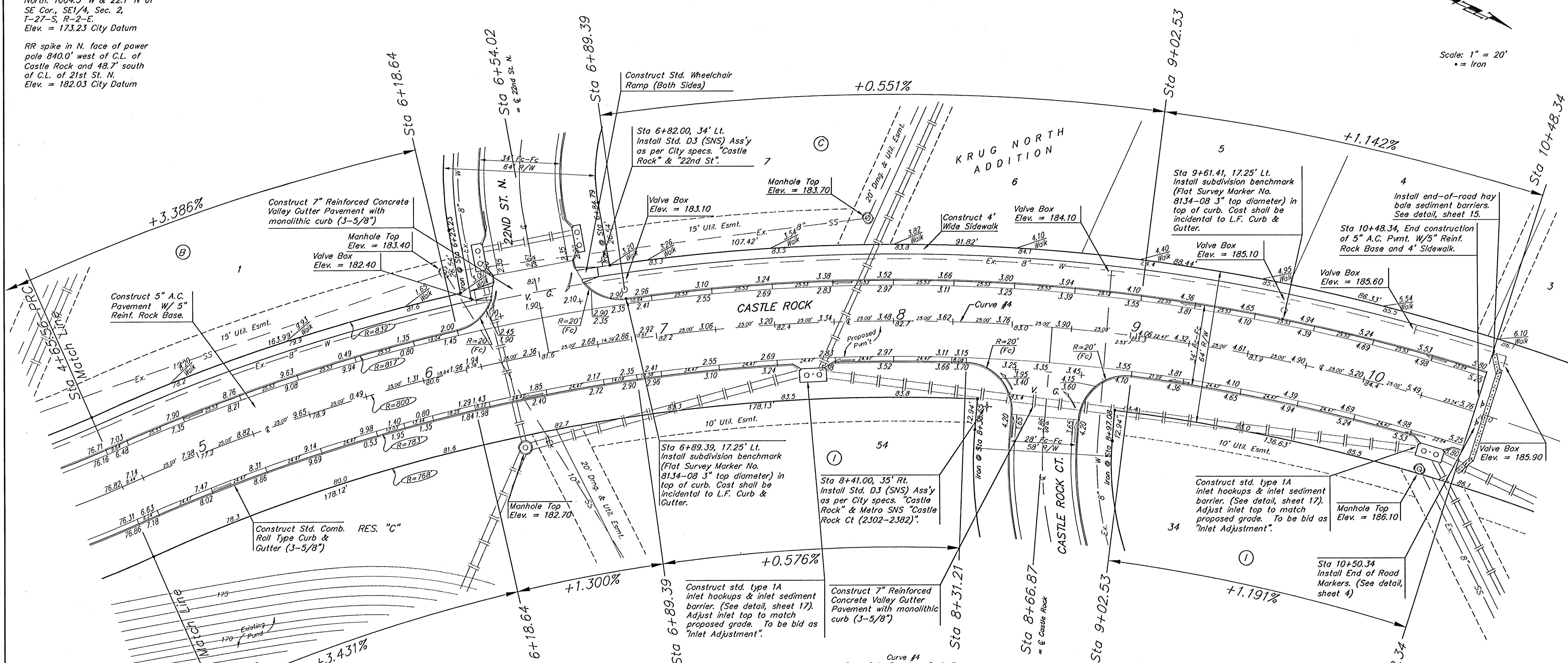
BENCHMARKS:
 "□" Cut in middle of N headwall of RCBC on 21st St. North. 1004.3' W & 22.1' N of SE Cor., SE1/4, Sec. 2, T-27-S, R-2-E. Elev. = 173.23 City Datum

RR spike in N. face of power pole 840.0' west of C.L. of Castle Rock and 48.7' south of C.L. of 21st St. N. Elev. = 182.03 City Datum

P.V.I.
 Elev. = 184.10
 No V.C.



Scale: 1" = 20'
 • = Iron



Curve #4
 Curve Data Based on Centerline
 Rad. = 800' Delta = 58° 45' 22" Tangent = 450.37'
 Arc = 820.39' L.C. = 784.91' Def/Ft. = 2.14859 Min.

Station	Arc	FACE CHORD LENGTHS		Dell	T. Dell
		8' Lt.	8' Rt.		
4+85.56				0°00'00"	0°00'00"
4+75.00	9.44'	9.73'	9.14'	0°20'17"	0°20'17"
5+00.00	25.00'	25.78'	24.22'	0°53'43"	1°13'60"
5+25.00	25.00'	25.78'	24.22'	0°53'43"	2°07'43"
5+50.00	25.00'	25.78'	24.22'	0°53'43"	3°01'25"
5+75.00	25.00'	25.78'	24.22'	0°53'43"	3°55'08"
6+00.00	25.00'	25.78'	24.22'	0°53'43"	4°48'51"
6+18.64	18.64'	19.22'	18.06'	0°40'03"	5°28'54"
6+54.02	35.38'	36.48'	34.27'	1°18'01"	6°44'55"
6+89.39	35.37'	36.47'	34.26'	1°18'00"	8°00'55"
7+00.00	10.61'	10.94'	10.28'	0°22'48"	8°23'43"
7+25.00	25.00'	25.78'	24.22'	0°53'43"	9°17'26"
7+50.00	25.00'	25.78'	24.22'	0°53'43"	10°11'09"
7+75.00	25.00'	25.78'	24.22'	0°53'43"	11°04'51"
8+00.00	25.00'	25.78'	24.22'	0°53'43"	11°58'34"
8+25.00	25.00'	25.78'	24.22'	0°53'43"	12°52'17"
8+50.00	25.00'	25.78'	24.22'	0°53'43"	13°46'00"
8+75.00	25.00'	25.78'	24.22'	0°53'43"	14°39'43"
9+00.00	25.00'	25.78'	24.22'	0°53'43"	15°33'26"
9+25.00	25.00'	25.78'	24.22'	0°53'43"	16°27'09"
9+50.00	25.00'	25.78'	24.22'	0°53'43"	17°20'52"
9+75.00	25.00'	25.78'	24.22'	0°53'43"	18°14'35"
10+00.00	25.00'	25.78'	24.22'	0°53'43"	19°08'18"
10+25.00	25.00'	25.78'	24.22'	0°53'43"	20°02'01"
10+48.34	23.39'	24.12'	22.66'	0°50'15"	20°52'16"
12+85.95	237.95'	244.08'	229.29'	8°30'25"	29°22'41"

P.V.I.
 Elev. = 182.90
 No V.C.

P.V.I.
 Elev. = 182.00
 61.38' V.C.

NOTE: ROLL TYPE CURB & GUTTER TO BE CONSTRUCTED ON THE PAVEMENT SHOWN ON THIS SHEET. TOP OF CURB ELEVATIONS ARE GIVEN FOR FULL HEIGHT CURB.

Baughman KRUG NORTH ADDITION - PHASE I
CASTLE ROCK
 STA 4+65.56 TO STA 10+48.34

Baughman Company, P.A. 315 Ella St. Wilkes, KS 67111 P. 316.242.7211 F. 316.252.0149
 ENGINEERING | SURVEYING | PLANNING | LANDSCAPE ARCHITECTURE

PROJECT NUMBER: 472-83973
 DESIGNER: TMS
 DRAWN: TMS
 DATE: 05/04
 APPROVED: [Signature]
 REVISIONS: [Table]
 SCALE: Noted
 SHEET: 8 OF 30
 KrugNorth/Std2 0407.E848