

**BENCHMARKS:**  
 "□" Cut in middle of N headwall of RCBC on 21st St. North. 1004.3' W & 22.1' N of SE Cor., SE1/4, Sec. 2, T-27-S, R-2-E. Elev. = 173.23 City Datum  
 RR spike in N. face of power pole 840.0' west of C.L. of Castle Rock and 48.7' south of C.L. of 21st St. N. Elev. = 182.03 City Datum

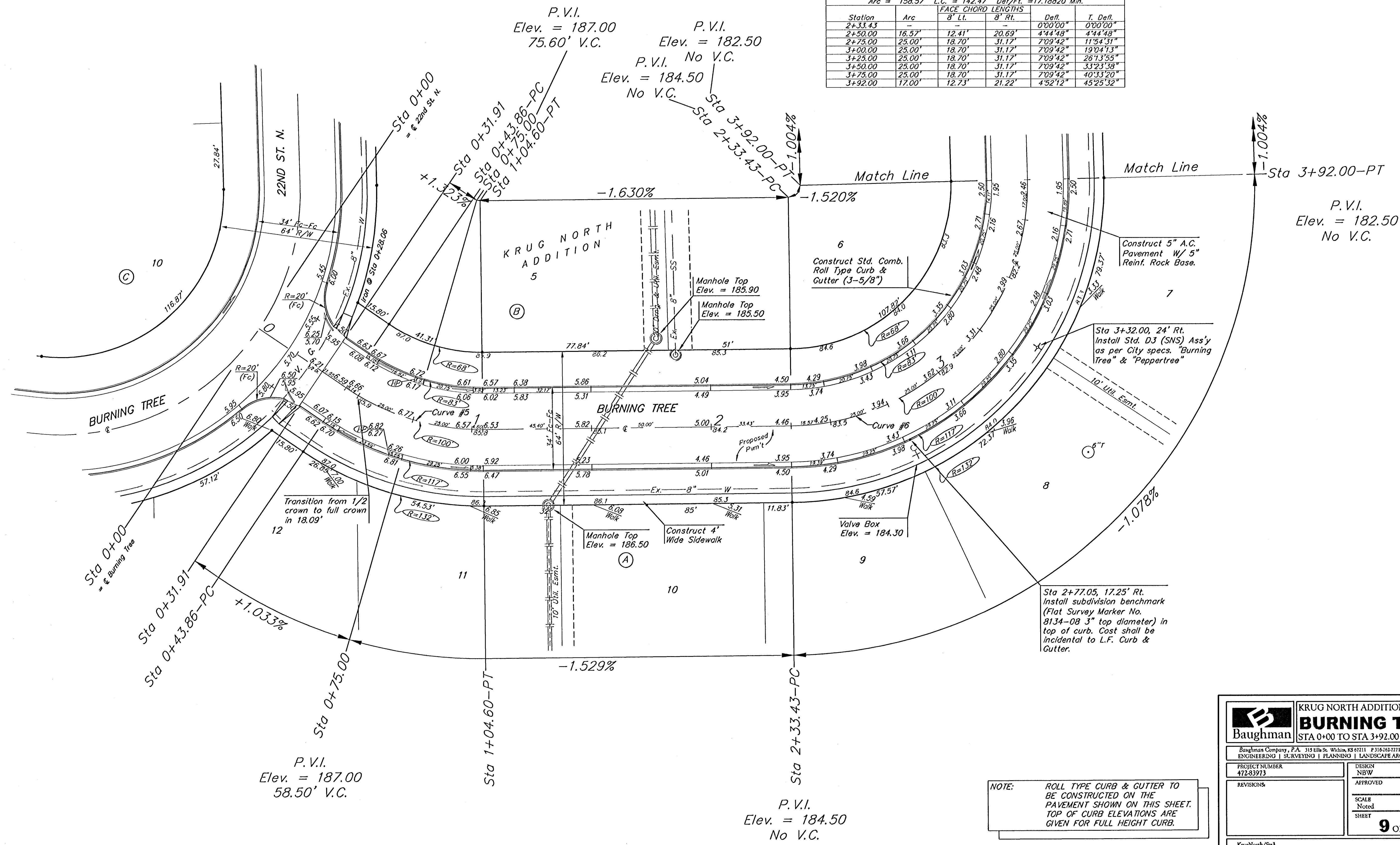
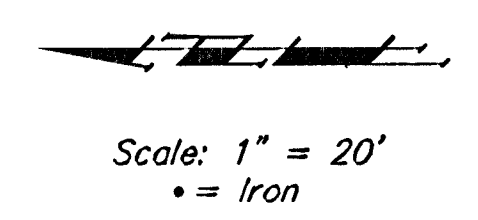
Curve #5  
 Curve Data Based on Centerline  
 Rad. = 100' Delta = 34° 48' 13" Tangent = 31.34'  
 Arc = 60.74' L.C. = 59.82' Del/Ft. = 17.19007 Min.

Station	Arc	FACE CHORD LENGTHS		Defl.	T. Defl.
		B' Lt.	B' Rt.		
0+43.86	-	-	-	0°00'00"	0°00'00"
0+50.00	6.14'	4.60'	7.67'	1°45'33"	1°45'33"
0+75.00	25.00'	18.70'	31.17'	7°09'42"	8°55'18"
1+04.60	29.60'	22.12'	36.87'	8°28'49"	17°24'07"

Curve #6  
 Curve Data Based on Centerline  
 Rad. = 100' Delta = 90° 51'04" Tangent = 101.50'  
 Arc = 158.57' L.C. = 142.47' Del/Ft. = 17.18820 Min.

Station	Arc	FACE CHORD LENGTHS		Defl.	T. Defl.
		B' Lt.	B' Rt.		
2+33.43	-	-	-	0°00'00"	0°00'00"
2+50.00	16.57'	12.41'	20.69'	4°44'48"	4°44'48"
2+75.00	25.00'	18.70'	31.17'	7°09'42"	11°54'31"
3+00.00	25.00'	18.70'	31.17'	7°09'42"	19°04'13"
3+25.00	25.00'	18.70'	31.17'	7°09'42"	26°13'55"
3+50.00	25.00'	18.70'	31.17'	7°09'42"	33°23'38"
3+75.00	25.00'	18.70'	31.17'	7°09'42"	40°33'20"
3+92.00	17.00'	12.73'	21.22'	4°52'12"	45°25'32"



**NOTE:**  
 ROLL TYPE CURB & GUTTER TO BE CONSTRUCTED ON THE PAVEMENT SHOWN ON THIS SHEET. TOP OF CURB ELEVATIONS ARE GIVEN FOR FULL HEIGHT CURB.

**Baughman** KRUG NORTH ADDITION - PHASE I  
**BURNING TREE**  
 STA 0+00 TO STA 3+92.00

Baughman Company, P.A. 315 Ellis St. Wichita, KS 67211 P 316-262-7711 F 316-262-0149  
 ENGINEERING | SURVEYING | PLANNING | LANDSCAPE ARCHITECTURE

PROJECT NUMBER 472-33973	DESIGN NBW	DRAWN TMS
REVISIONS	APPROVED	DATE 05/04
	SCALE Noted	
	SHEET	<b>9 OF 30</b>

KrugNorth/Str3 0407-E848