

BENCHMARKS:
 "□" Cut in middle of N headwall of RCBC on 21st St. North. 1004.3' W & 22.1' N of SE Cor., SE 1/4, Sec. 2, T-27-S, R-2-E. Elev. = 173.23 City Datum

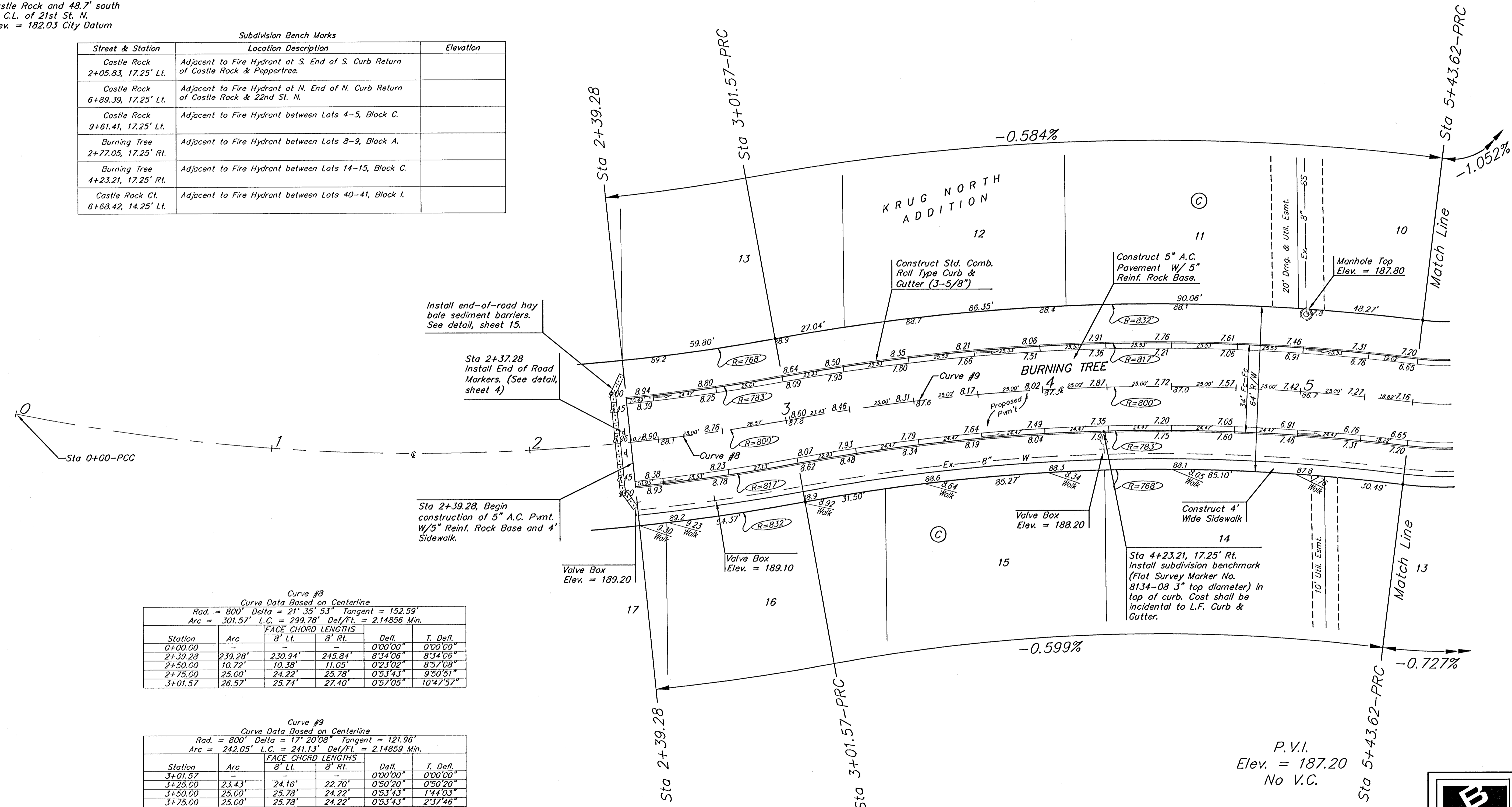
RR spike in N. face of power pole 840.0' west of C.L. of Castle Rock and 48.7' south of C.L. of 21st St. N. Elev. = 182.03 City Datum

Subdivision Bench Marks

Street & Station	Location Description	Elevation
Castle Rock 2+05.83, 17.25' Lt.	Adjacent to Fire Hydrant at S. End of S. Curb Return of Castle Rock & Peppertree.	
Castle Rock 6+89.39, 17.25' Lt.	Adjacent to Fire Hydrant at N. End of N. Curb Return of Castle Rock & 22nd St. N.	
Castle Rock 9+61.41, 17.25' Lt.	Adjacent to Fire Hydrant between Lots 4-5, Block C.	
Burning Tree 2+77.05, 17.25' Rt.	Adjacent to Fire Hydrant between Lots 8-9, Block A.	
Burning Tree 4+23.21, 17.25' Rt.	Adjacent to Fire Hydrant between Lots 14-15, Block C.	
Castle Rock Ct. 6+68.42, 14.25' Lt.	Adjacent to Fire Hydrant between Lots 40-41, Block I.	

P.V.I.
 Elev. = 187.20
 No V.C.

Scale: 1" = 20'
 • = Iron



Curve #8
 Curve Data Based on Centerline
 Rad. = 800' Delta = 21° 35' 53" Tangent = 152.59'
 Arc = 301.57' L.C. = 299.78' Del/Pt. = 2.14856 Min.

Station	Arc	FACE CHORD LENGTHS		Defl.	T. Defl.
		8' Lt.	8' Rt.		
0+00.00	-	-	-	0°00'00"	0°00'00"
2+39.28	239.28'	230.94'	245.84'	8°34'06"	8°34'06"
2+50.00	10.72'	10.38'	11.05'	0°23'02"	8°57'08"
2+75.00	25.00'	24.22'	25.78'	0°53'43"	9°50'51"
3+01.57	26.57'	25.74'	27.40'	0°57'05"	10°47'57"

Curve #9
 Curve Data Based on Centerline
 Rad. = 800' Delta = 17° 20' 08" Tangent = 121.96'
 Arc = 242.05' L.C. = 241.13' Del/Pt. = 2.14859 Min.

Station	Arc	FACE CHORD LENGTHS		Defl.	T. Defl.
		8' Lt.	8' Rt.		
3+01.57	-	-	-	0°00'00"	0°00'00"
3+25.00	23.43'	24.16'	22.70'	0°50'20"	0°50'20"
3+50.00	25.00'	25.78'	24.22'	0°53'43"	1°44'03"
3+75.00	25.00'	25.78'	24.22'	0°53'43"	2°37'46"
4+00.00	25.00'	25.78'	24.22'	0°53'43"	3°31'29"
4+25.00	25.00'	25.78'	24.22'	0°53'43"	4°25'12"
4+50.00	25.00'	25.78'	24.22'	0°53'43"	5°18'55"
4+75.00	25.00'	25.78'	24.22'	0°53'43"	6°12'38"
5+00.00	25.00'	25.78'	24.22'	0°53'43"	7°06'21"
5+25.00	25.00'	25.78'	24.22'	0°53'43"	8°00'03"
5+43.62	18.62'	19.20'	18.04'	0°40'00"	8°40'04"

NOTE: ROLL TYPE CURB & GUTTER TO BE CONSTRUCTED ON THE PAVEMENT SHOWN ON THIS SHEET. TOP OF CURB ELEVATIONS ARE GIVEN FOR FULL HEIGHT CURB.

Baughman KRUG NORTH ADDITION - PHASE I
BURNING TREE
 STA 2+39.28 TO STA 5+43.62

PROJECT NUMBER: 472-83973
 DESIGN: NBW
 DRAWN: TMS
 APPROVED: [Signature]
 DATE: 05/04

SCALE: Noted
 SHEET: 11 OF 30

KrugNorth/St5 0407-E848