

BENCHMARKS:
 "□" Cut in middle of N headwall of RCBC on 21st St. North. 1004.3' W & 22.1' N of SE Cor., SE 1/4, Sec. 2, T-27-S, R-2-E. Elev. = 173.23 City Datum

RR spike in N. face of power pole 840.0' west of C.L. of Castle Rock and 48.7' south of C.L. of 21st St. N. Elev. = 182.03 City Datum

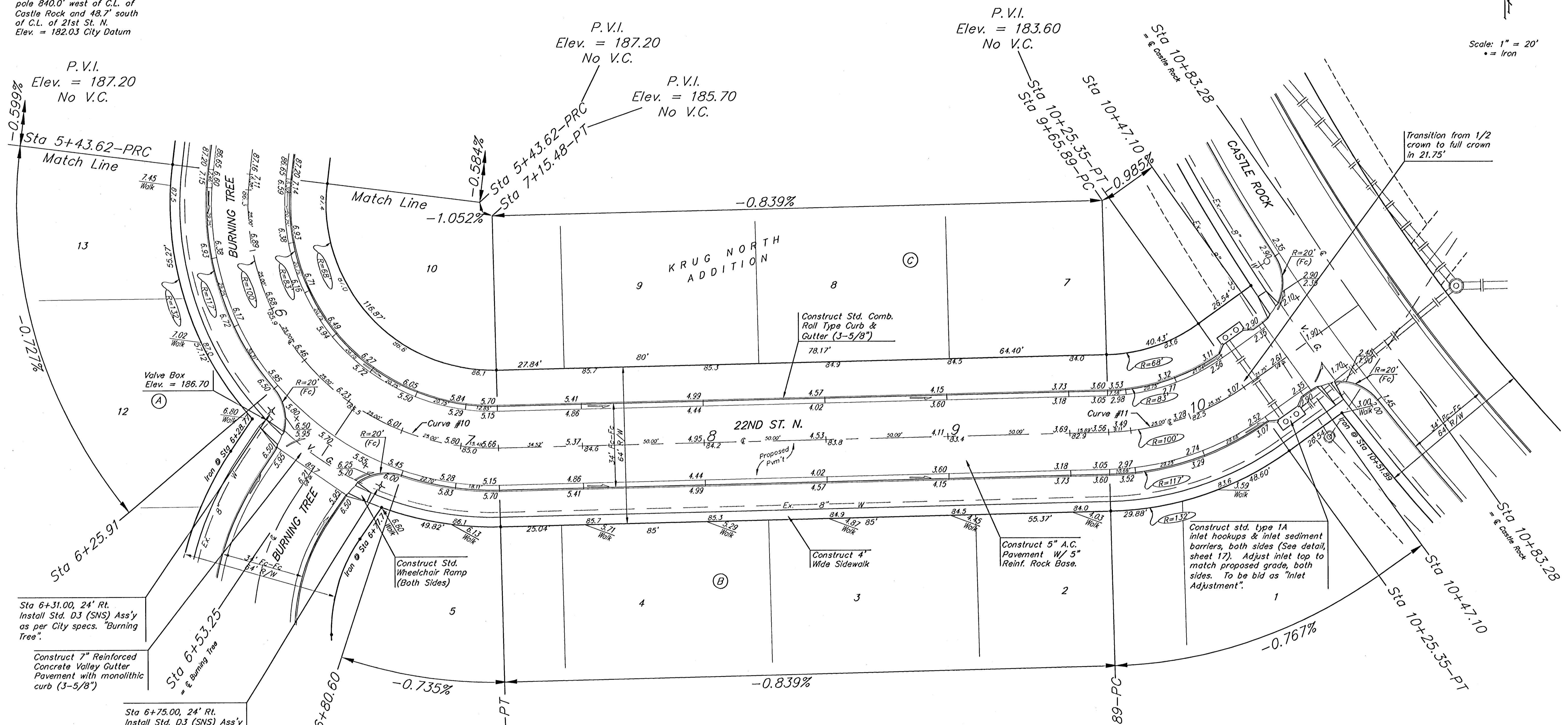
P.V.I. Elev. = 187.20 No V.C.

P.V.I. Elev. = 187.20 No V.C.

P.V.I. Elev. = 185.70 No V.C.

P.V.I. Elev. = 183.60 No V.C.

Scale: 1" = 20'
 +- Iron



Sta 6+31.00, 24' Rt. Install Std. D3 (SNS) Ass'y as per City specs. "Burning Tree".

Construct 7" Reinforced Concrete Valley Gutter Pavement with monolithic curb (3-5/8")

Sta 6+75.00, 24' Rt. Install Std. D3 (SNS) Ass'y as per City specs. "22nd St" & "Burning Tree".

Curve #10
 Curve Data Based on Centerline
 Rad. = 100' Delta = 98° 28' 16" Tangent = 116.00'
 Arc = 171.86' L.C. = 151.48' Def/Ft. = 17.18918 Min.

Station	Arc	FACE CHORD LENGTHS		Defl.	T. Defl.
		B' Lt.	B' Rt.		
5+43.62	-	-	-	000'00"	000'00"
5+50.00	6.38'	4.78'	7.97'	149'40"	149'40"
5+75.00	25.00'	18.70'	31.17'	709'44"	8'59'24"
6+00.00	25.00'	18.70'	31.17'	709'44"	16'09'02"
6+25.91	25.91'	19.38'	32.30'	725'22"	23'34'30"
6+53.25	27.34'	20.44'	34.07'	749'57"	31'24'27"
6+80.60	27.35'	20.45'	34.08'	750'07"	39'14'34"
7+00.00	19.40'	14.53'	24.21'	5'33'28"	44'48'02"
7+15.48	15.48'	11.60'	19.33'	4'26'05"	49'14'08"

Curve #11
 Curve Data Based on Centerline
 Rad. = 100' Delta = 34° 04' 02" Tangent = 30.64'
 Arc = 59.46' L.C. = 58.59' Def/Ft. = 17.18831 Min.

Station	Arc	FACE CHORD LENGTHS		Defl.	T. Defl.
		B' Lt.	B' Rt.		
9+65.89	-	-	-	000'00"	000'00"
9+75.00	9.11'	6.83'	11.38'	2'36'35"	2'36'35"
10+00.00	25.00'	18.70'	31.17'	709'42"	9'48'17"
10+25.35	25.35'	18.96'	31.60'	715'43"	17'02'01"

P.V.I. Elev. = 185.70 No V.C.

P.V.I. Elev. = 183.60 No V.C.

NOTE: ROLL TYPE CURB & GUTTER TO BE CONSTRUCTED ON THE PAVEMENT SHOWN ON THIS SHEET. TOP OF CURB ELEVATIONS ARE GIVEN FOR FULL HEIGHT CURB.

Baughman KRUG NORTH ADDITION - PHASE I
22ND ST. N.
 STA 5+43.62 TO STA 10+83.28

Baughman Company, P.A. 315 E. 11th St. Wichita, KS 67211 P: 316.263.7211 F: 316.263.0149
 ENGINEERING | SURVEYING | PLANNING | LANDSCAPE ARCHITECTURE

PROJECT NUMBER 472-83973	DESIGN NBW	DRAWN TMS
REVISIONS:	APPROVED	DATE 05/04
SCALE Noted		12 OF 30
SHEET		

KrugNorth/Sus 04-07-E848