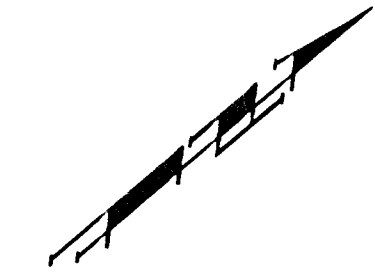


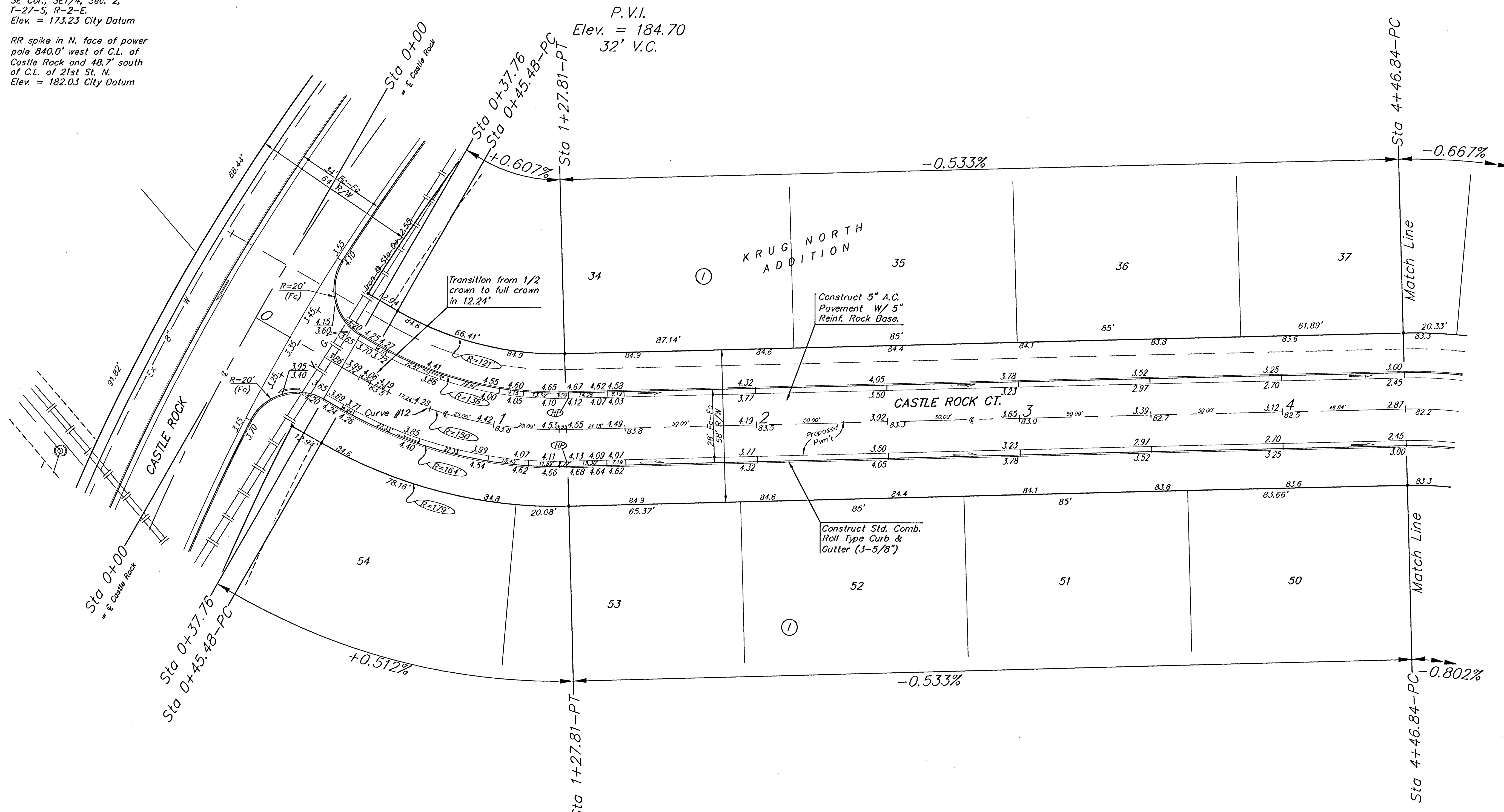
**BENCHMARKS:**  
 "□" Cut in middle of N  
 headwall of RCBC on 21st St.  
 North. 1004.3' W & 22.1' N of  
 SE Cor., SE 1/4, Sec. 2,  
 T-27-S, R-2-E.  
 Elev. = 173.23 City Datum

RR spike in N. face of power  
 pole 840.0' west of C.L. of  
 Castle Rock and 48.7' south  
 of C.L. of 21st St. N.  
 Elev. = 182.03 City Datum

P.V.I.  
 Elev. = 183.00  
 No V.C.



Scale: 1" = 20'  
 = Iron



P.V.I.  
 Elev. = 184.70  
 30' V.C.

Curve #12  
 Curve Data Based on Centerline  
 Rad. = 150' Delta = 31° 28' 48" Tangent = 42.23'  
 Arc = 82.33' L.C. = 81.30' Def/100' = 11.45876 Min.

Station	Arc	FACE CHORD LENGTHS		Def.	T. Def.
		8' Lt.	8' Rt.		
0+45.48	-	-	-	0'00"00"	0'00"00"
0+50.00	4.52'	3.86'	5.18'	0'51'47"	0'51'47"
0+75.00	25.00'	21.31'	28.63'	4'46'28"	5'38'16"
1+00.00	25.00'	21.31'	28.63'	4'46'28"	10'24'44"
1+27.81	27.81'	23.70'	31.84'	5'18'40"	15'43'24"

P.V.I.  
 Elev. = 183.00  
 No V.C.

**NOTE:** ROLL TYPE CURB & GUTTER TO BE CONSTRUCTED ON THE PAVEMENT SHOWN ON THIS SHEET. TOP OF CURB ELEVATIONS ARE GIVEN FOR FULL HEIGHT CURB.

**Baughman** KRUG NORTH ADDITION - PHASE I  
**CASTLE ROCK CT.**  
 STA 0+00 TO STA 4+46.84

PROJECT NUMBER: 41283973  
 DESIGN: NBW  
 DRAWN: TMS

REVISIONS: APPROVED: DATE: 05/04

SCALE: Noted  
 SHEET: **13 OF 30**

KrugNorth/Stz7 0407E848