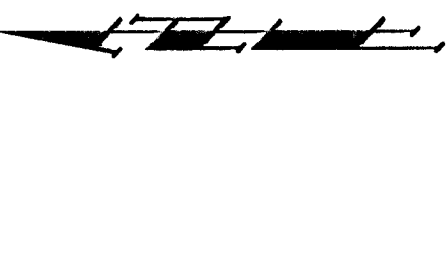


KRUG NORTH ADDITION WICHITA, SEDGWICK COUNTY, KANSAS



- = AS REPAIR BY BAUGHMAN CO. (SET)
- = BRICKS (UNRECORDED TILES)
- = 3/4" IRON (FOUND)
- = AS REPAIR (FOUND)

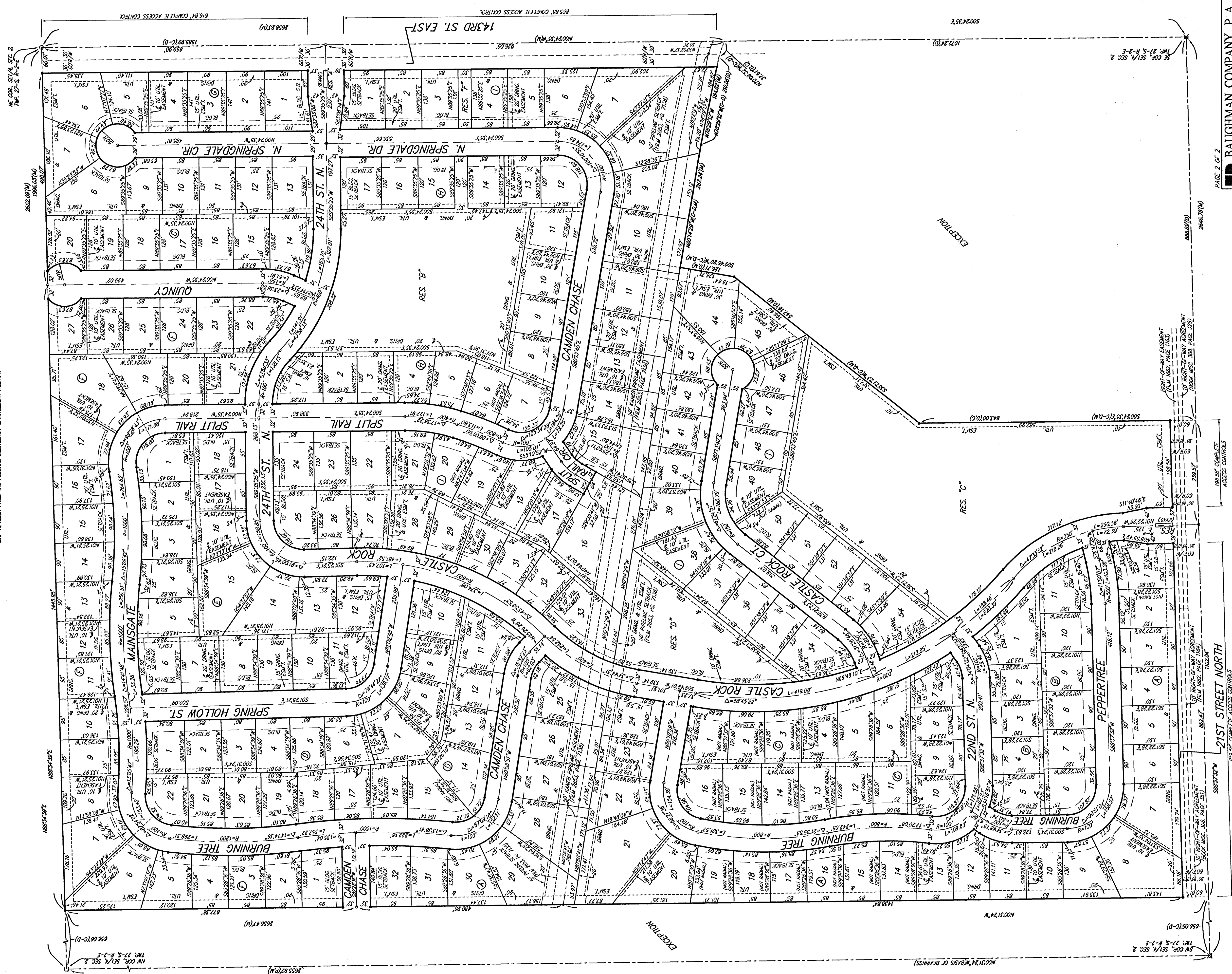
BENCHMARK:
 TO CUT IN THE MIDDLE OF THE
 A. RECORDAL OF R.C.S.C. ON
 1004.3' N. & 221.1' E. OF THE
 S.E. COR. SE1/4, SEC. 2,
 T15S, R.3E, S.12E
 ELEV. = 713.33 CITY DATUM
 (1982.63 NAVD83)

MINIMUM BUILDING FLOOR ELEVATIONS FOR LIVABLE SPACES TO THE STRUCTURES			
LOT	BLOCK	ELEVATION	CITY DATUM
1-17	H	106.0	
3-4	I	107.0	
42-54	J	178.0	

NOTE:
 The property lines for drainage has been determined for this
 subdivision and is on file with the City of Wichita, Kansas. All
 drainage easements, right-of-way, or reserves shall remain of
 record with this subdivision. The drainage system is subject to the
 approval of the City of Wichita, Kansas. No alterations which
 impede the flow of this drainage system be allowed.

NOTE:
 NO BUILDING PERMITS ARE TO BE ISSUED FOR LOTS 1 AND 2, BLOCK A,
 AND LOT 11, BLOCK B, WITHIN THIS NORTH ADDITION UNLESS THE COMBINED
 AREA OF THE LOTS IS AT LEAST 10,000 SQ. FT. UNLESS THE CITY OF WICHITA,
 KANSAS HAS RECEIVED A LETTER OF
 MAP REVISION FROM THE FEDERAL EMERGENCY MANAGEMENT AGENCY.

- (O) = MEASURED
- (O) = AS RECORDED
- (O) = PLATTED
- (O) = CALCULATED PER
(C-D)
- (O) = RECORDED INFO.



30-50-20-41