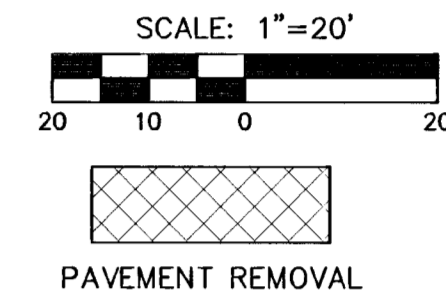


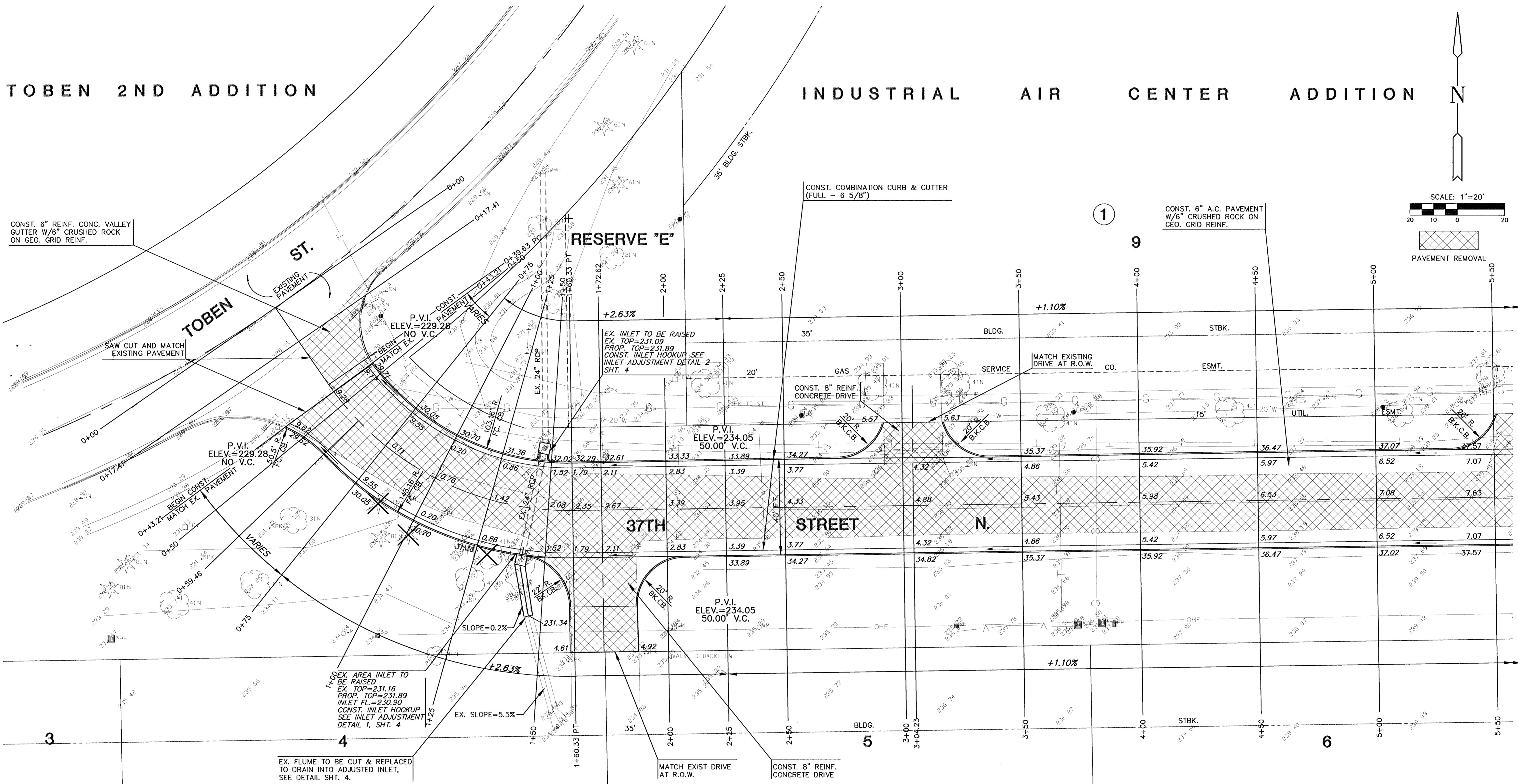
TOBEN 2ND ADDITION

INDUSTRIAL AIR CENTER ADDITION

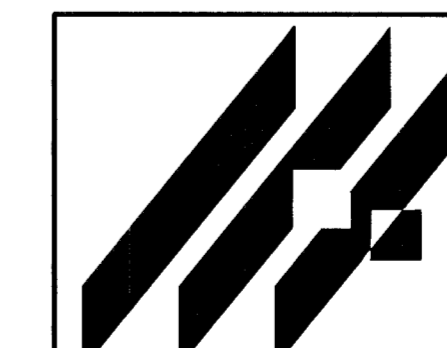


CONST. 6" REINF. CONC. VALLEY GUTTER W/6" CRUSHED ROCK ON GEO. GRID REINF.

CONST. 6" A.C. PAVEMENT W/6" CRUSHED ROCK ON GEO. GRID REINF.



COMOTARA INDUSTRIAL PARK 4TH ADDITION



COMOTARA INDUSTRIAL PARK
FOURTH ADDITION &
INDUSTRIAL AIR CENTER ADDITION
PROJECT NAME

PAVING PLANS
SHEET TITLE

MID-KANSAS ENGINEERING
CONSULTANTS, INC.
411 N. WEBB ROAD
WICHITA, KS. 67206
316-684-9600

GJA/JPN
DESIGN BY.

JPN/MLW/RDP
DRAWN BY.

GJA/BDM
CHECKED BY.

OCT. 1996
DATE

95114_E1
JOB NO.

8 / 21
SHEET/OF

R:\CVI\105114\PAVE\95114_E1 Tue Oct 29 22:23:33 1996