

GENERAL NOTES:

1. Contractor will be required to provide notice to utility companies a minimum of forty-eight (48) hours prior to any excavation, as follows:

Kansas One-Call 687-2470

The Contractor must notify the following in case of an emergency:

- Cox Communications 262-4270
- Kansas Gas Service 1-888-482-4950
- Wester Energy 383-2650
- Aquila Energy 1-800-303-0357
- SBC 268-2245
- City of Wichita Water Dept. 268-4563
- City of Wichita Sewer Maint. 268-4024
- City of Wichita Storm Sewer Maint. 268-4090
- City of Wichita Traffic Maint. 268-4034
- Conoco Pipeline Co. 1-800-231-2551
- Southern Star Pipeline Co. 529-6600
- Phillips Pipeline Co. 1-800-766-8230

2. Utility service lines, poles, valve boxes, meters, and etcetera are to be adjusted as necessary by others prior to construction unless the plans specifically call for their adjustment by the Contractor or unless the plans specifically identify a utility to be adjusted by its owner during construction. Existing utilities and their location, as shown on the plans, represent the best information obtainable for design. The Contractor will be required to work around existing utilities within the right-of-way which do not conflict with proposed construction.

3. Rubble from the removal of miscellaneous structures and excess excavation which is to be wasted shall be disposed of on sites to be provided by the Contractor. These sites shall be approved by the Engineer as to suitability, appearance and site location. Locations, in the opinion of the Engineer, that will leave an unsightly appearance will not be approved. All disposal sites must be approved by the Kansas Department of Health and Environment. Material either stockpiled or disposed of in a flood plain would require a Kansas State Board of Agriculture permit. Any material dumped in waters of the United States or wetlands is subject to U.S. Corps of Engineers permitting regulations. Any material buried or stockpiled beyond approved construction limits would require additional archaeological investigations unless buried in a previously approved borrow location.

4. Trees and shrubs in public right-of-way which are in direct conflict with proposed new construction shall be removed by the Contractor with the Engineer's approval. Trees and shrubs which are not in direct conflict with proposed new construction shall be saved and protected from damage.

5. The Contractor shall give all property owners and/or tenants of developed property adjoining the construction of this project a minimum of ten (10) days notice prior to start of construction.

6. The Contractor shall be responsible for preserving property irons. The Contractor will be required to re-establish any property irons which are damaged or destroyed by his construction operations. Such irons shall be re-established by a licensed land surveyor in accordance with state laws.

7. All existing and proposed erosion control measures including silt fencing, erosion control mat, straw bales, inlet barriers, and const. entrance shall be maintained throughout construction by the contractor and until project is accepted by the City of Wichita. The on-site engineer shall complete weekly reports on the status of erosion control measures. The contractor shall be required to comply with maintenance and/or replacement of erosion control measures as determined by the on-site engineer until project is accepted by City of Wichita. Maintenance and/or replacement of erosion control measures to be paid by L.S. bid item "Site Clearing & Restoration."

8. All areas disturbed during construction shall be seeded as indicated on Pond Plan.

9. Contractor shall contact Engineer for availability and location of contractor borrow.

10. The developer for this project is Jay W. Russell, (316)722-2417.

11. Contractor shall sequence construction activities and complete work on or adjacent to Lots 1-33, Block A; Lots 16-21, Block B; & Lots 1-25, Block E prior to any other work on the site. The contractor shall complete this work to allow for street construction on adjacent R/W.

12. Remove trees ONLY as necessary for construction. Contractor shall contact engineer or developer prior to any tree removal. Cost of removal to be incidental to lump sum bid item "Site Clearing & Restoration".

STORM WATER DRAIN #253

to serve

SOUTHERN RIDGE 3RD ADDITION

CITY OF WICHITA, KANSAS

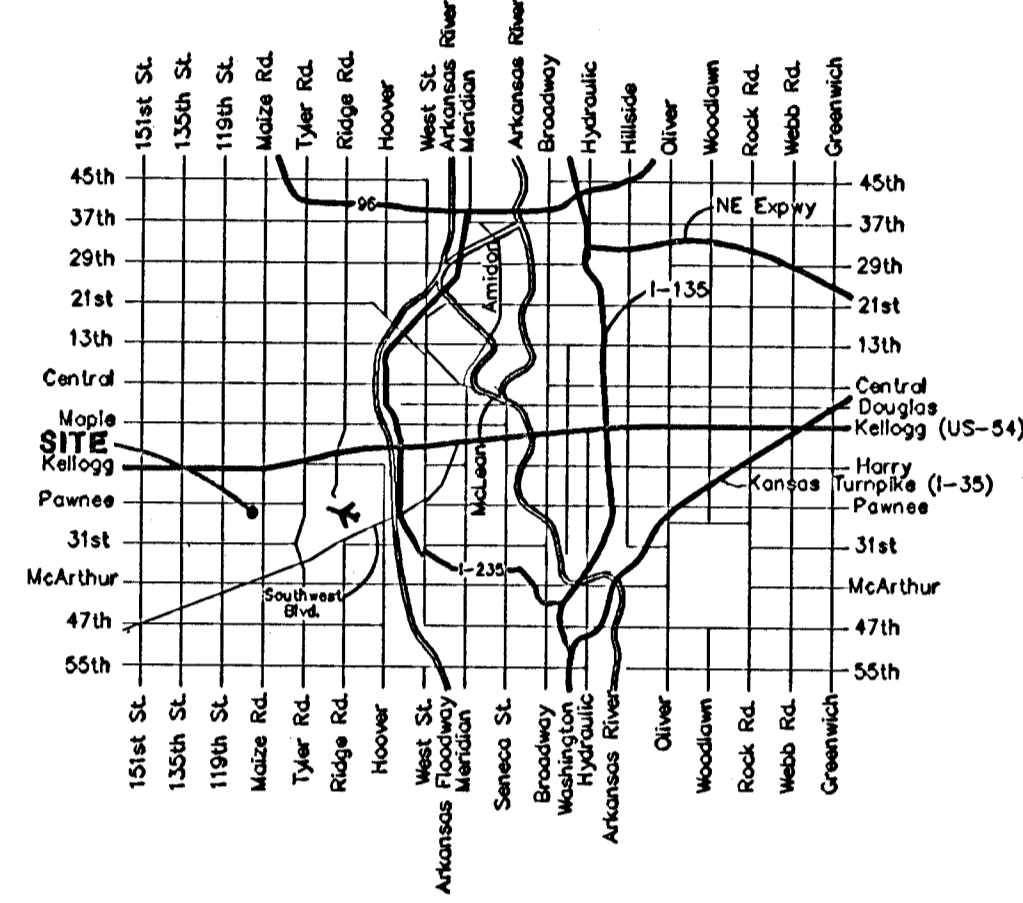
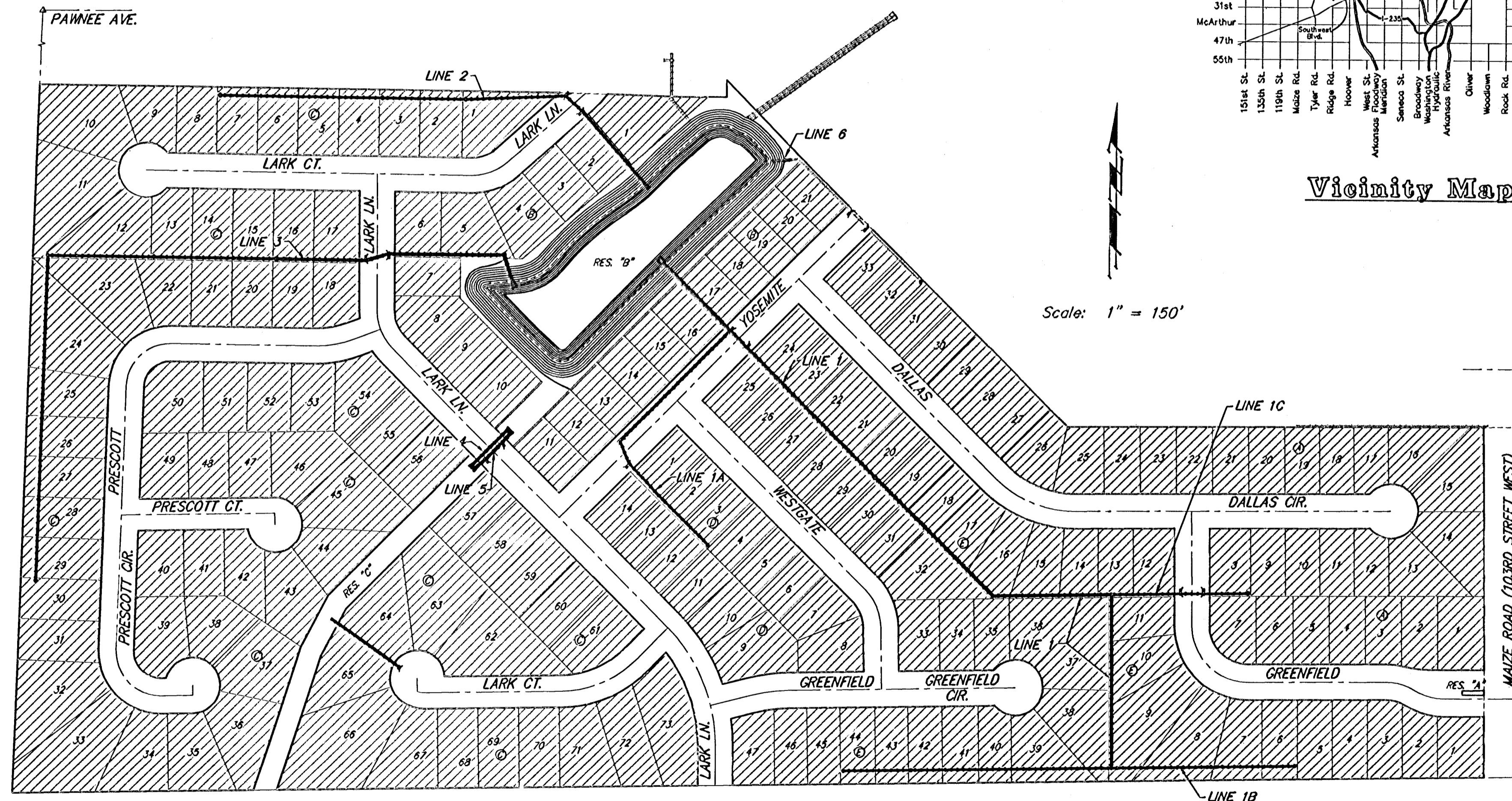
James L. Armor, P.E. City Engineer

Project Number

468-83968

O.C.A. Number

751406



Vicinity Map

Scale: 1" = 150'

Benchmark

BM #1: COW Disc at South West Corner of the Intersection of Lark & Atlanta. Elev. = 145.20 (City Datum)

BM #2: COW Disc at North West side of Westgate at South End of Lot 13 Block "B" Southern Ridge Addition. Elev. = 144.10 (City Datum)

BM #3: COW BM at Shefford on the south side of Pawnee Ave. Elev. = 145.53 (City Datum)

Sheet Index

Title Sheet	1
Line 1	2-6
Line 1A	7-8
Line 1B	9
Line 1C	10
Line 2	11-13
Line 3	14-16
Lines 4, 5, & 6	17
Std. Type 1A Double Inlet Detail	18
Standard Manhole Detail	19
MH Ring & Cover Detail	20
Special Yard Inlet Detail	21
Standard Drop Inlet Detail	22
RC Headwall Detail	23
Mass Grading/E.C. Plan	24-26
Pond Plan	27
Pond X-sections	28-29
Erosion Control BMPs	30-33
Copy of Plat	34

Benefit District



Baughman Company, P.A. 315 Ella St. Wichita, KS 67211 P 316-262-7271 F 316-262-0144
ENGINEERING | SURVEYING | PLANNING | LANDSCAPE ARCHITECTURE

