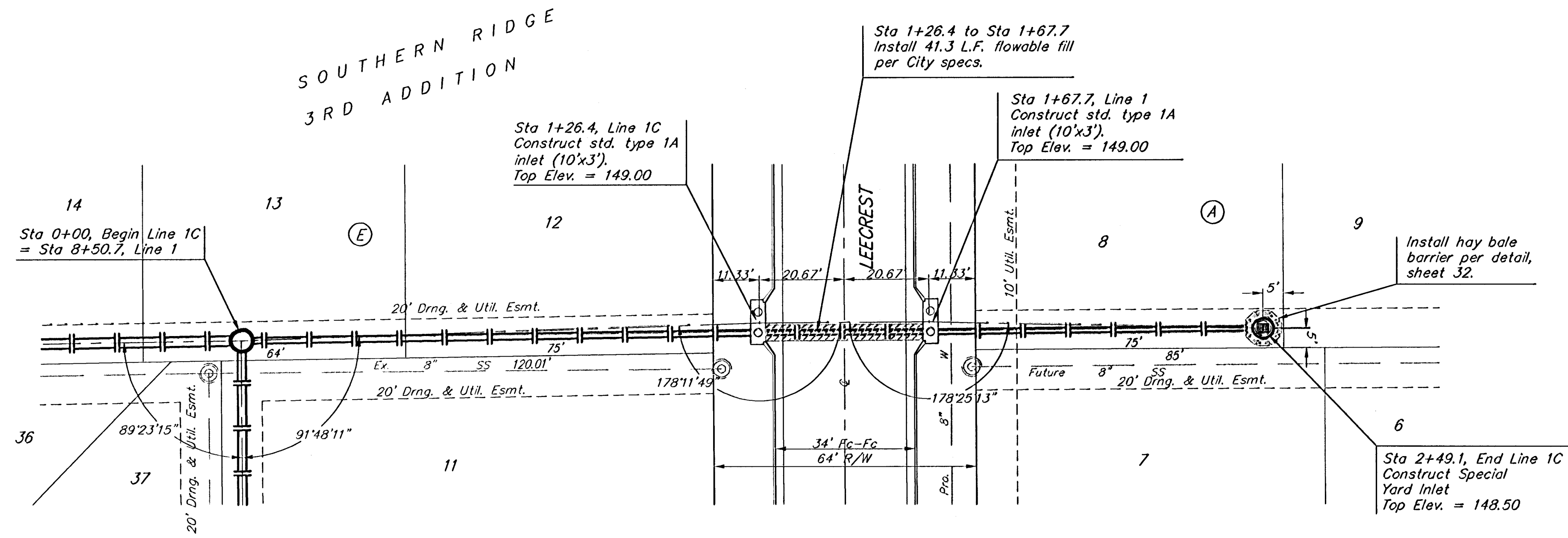


BENCHMARKS:
 BM #1: COW Disc at South West Corner of the Intersection of Lark & Atlanta.
 Elev. = 145.20 (City Datum)

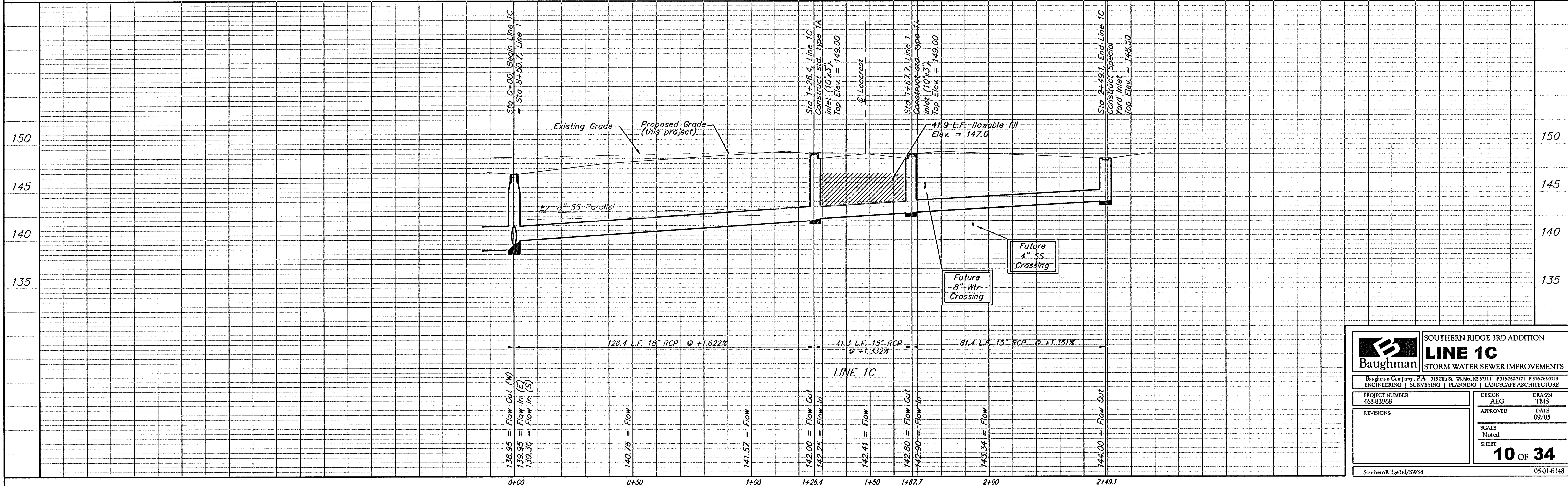
BM #2: COW Disc at North West side of Westgate at South End of Lot 13 Block "B" Southern Ridge Addition.
 Elev. = 144.10 (City Datum)

BM #3: COW BM at Shefford on the south side of Pawnee Ave.
 Elev. = 145.53 (City Datum)



Scale: 1" = 20' Horizontal
 1" = 5' Vertical
 • = Iron

Remove trees only as necessary for storm sewer construction and only with permission of Developer or Baughman Co. Cost of removal to be incidental to lump sum bid item "Site Clearing & Restoration".



Baughman		SOUTHERN RIDGE 3RD ADDITION	
		LINE 1C	
		STORM WATER SEWER IMPROVEMENTS	
Baughman Company, P.A. 315 Ella St. W. Atlanta, GA 30311 P 316.262.7271 F 316.262.0149			
ENGINEERING SURVEYING PLANNING LANDSCAPE ARCHITECTURE			
PROJECT NUMBER 465-83268	DESIGN AEG	DRAWN TMS	
REVISIONS:	APPROVED	DATE 09/05	
	SCALE Noted		
			10 OF 34
SouthernRidge3rd/SWS8		0501-E148	