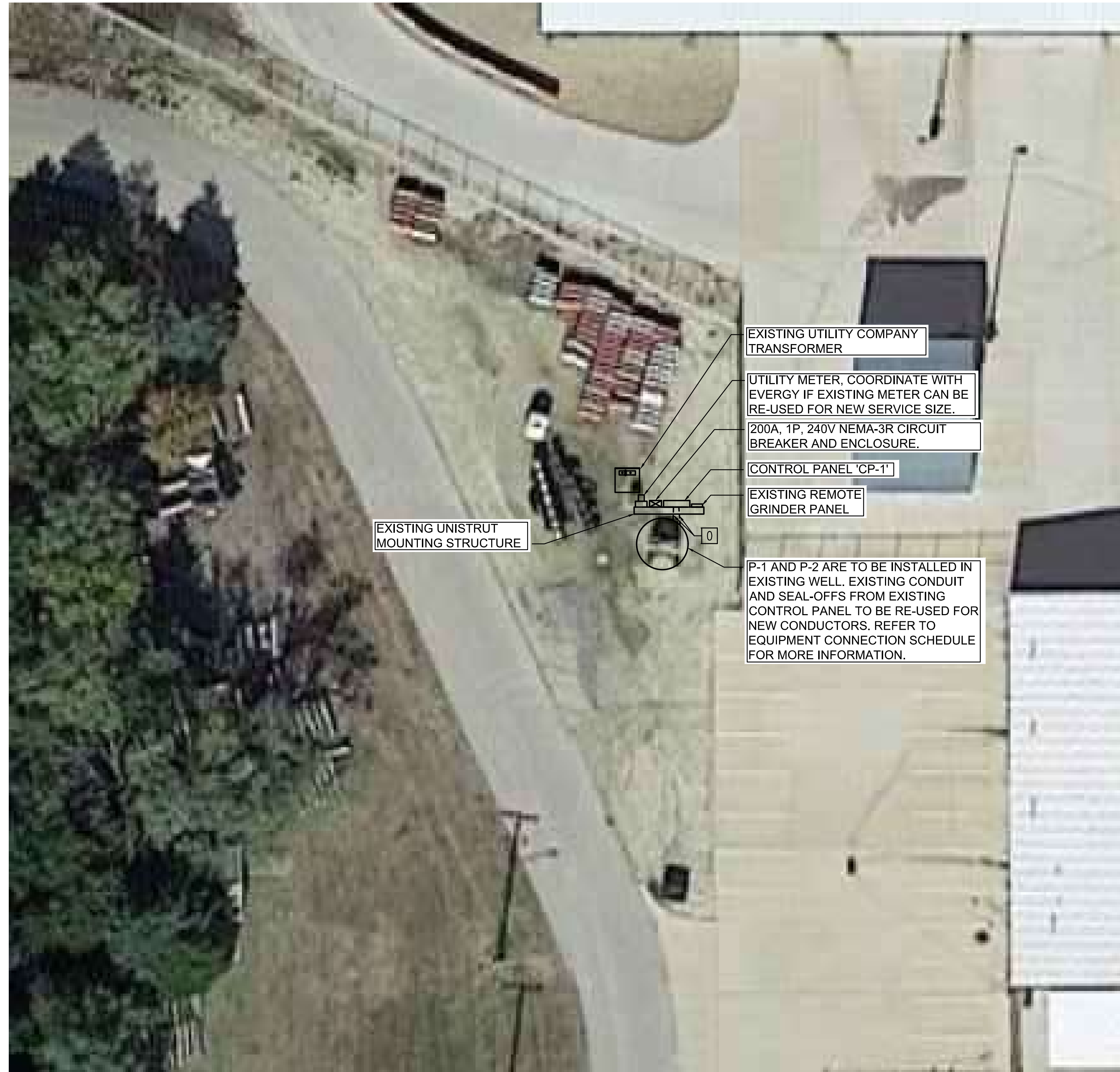


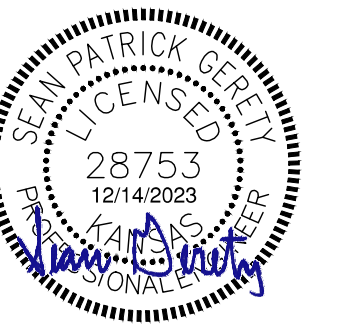
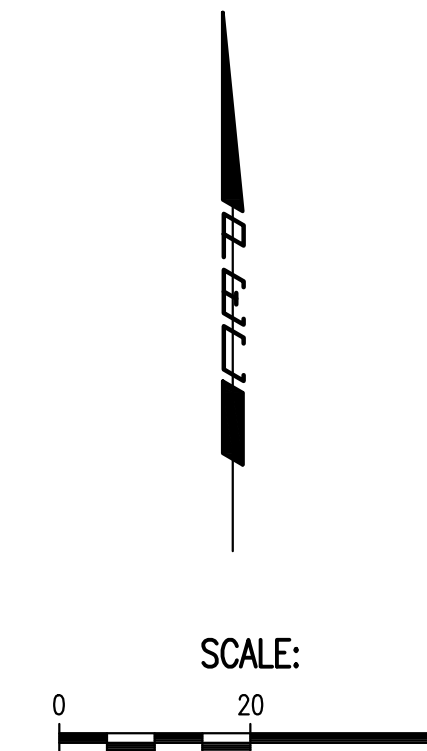
SAVED 12/14/2023 4:44:48 PM BY SEAN.GERETY
 PLOTTED 12/14/2023 5:20:44 PM BY SEAN.GERETY
 U:\WICHITA-CIVIL\2021\210602\02\PECC\DRAWINGS\ELEC\E-301 ELECTRICAL POWER PLAN.DWG



ELECTRICAL SITE PLAN NOTES:

1. UNLESS OTHERWISE NOTED, ALL CONDUIT ROUTED ON SITE SHALL BE 1" MINIMUM.
2. ALL RISERS SHALL BE PVC COATED RIGID GALVANIZED STEEL (RGS) ALL ELLS BELOW GRADE SHALL BE PVC COATED RIGID GALVANIZED STEEL (RGS). PROVIDE WITH PVC TO STEEL ADAPTER(S) AS NECESSARY. (THIS REQUIREMENT SHALL NOT APPLY TO FIXTURE POLE BASES)
3. ALL ELECTRICAL WORK AND FEES ASSOCIATED WITH UTILITIES SHALL BE VERIFIED AND COORDINATED WITH LOCAL SERVICE PROVIDER PRIOR TO BID.
4. CONTRACTOR SHALL REFERENCE ALL RELATED CONTRACT DOCUMENTS, SITE SURVEY, AND OTHER RESOURCES FOR POSSIBLE CONFLICTS WITH OTHER UNDERGROUND UTILITIES. AT UTILITY CROSSINGS, CONTRACTOR SHALL VERIFY UTILITY DEPTHS AND COORDINATE CONDUIT ROUTING AS NECESSARY.
5. CONTRACTOR SHALL VERIFY AND COORDINATE EXISTING CONDITIONS OF PROJECT SITE PRIOR TO BID.

A ELECTRICAL POWER PLAN
 SCALE: 1" = 20'-0"



**SANITARY SEWER IMPROVEMENTS
 COWSKIN FORCE MAIN
 AND LIFT STATION 60
 IMPROVEMENTS**
 PAUL GUNZELMAN, P.E. - INTERIM CITY ENGINEER
 CITY OF WICHITA PROJECT NO. 468-2022-040654

Issue:	

JOB NO.	35-210602-001-042
DATE	DECEMBER 2023
PM	TBK
DESIGNED BY	SPG
DRAWN BY	JAB
CHECKED BY	RWW

ELECTRICAL POWER PLAN

E-301