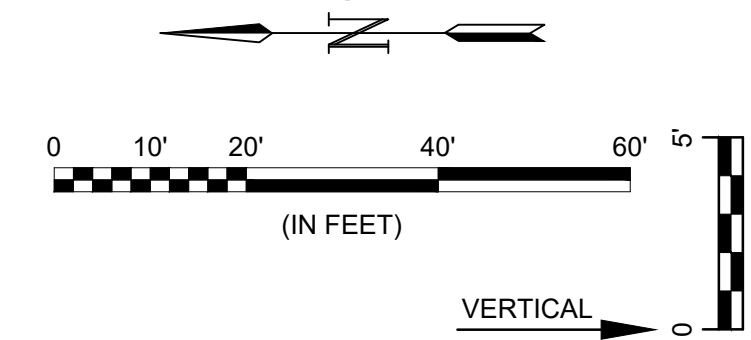
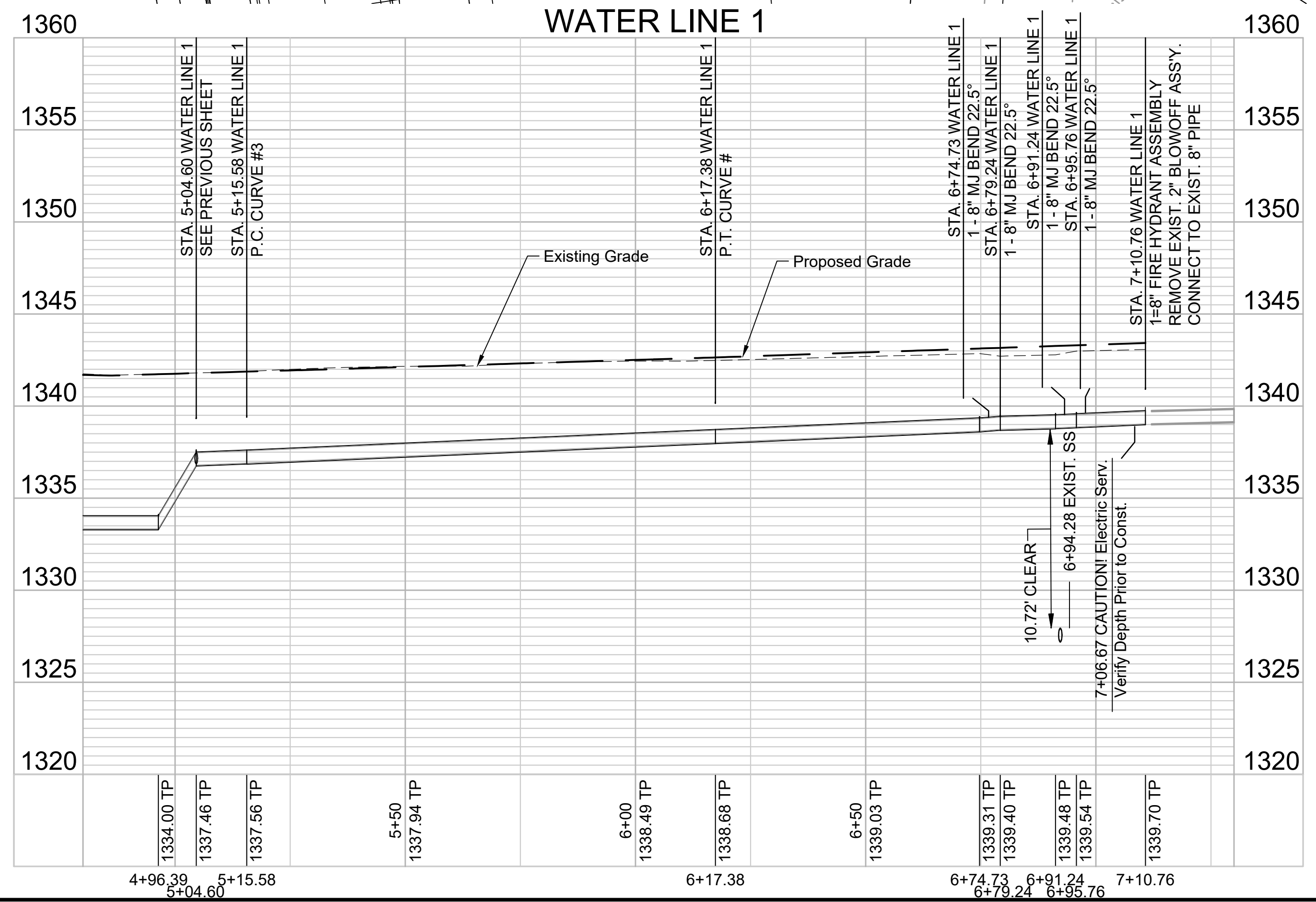
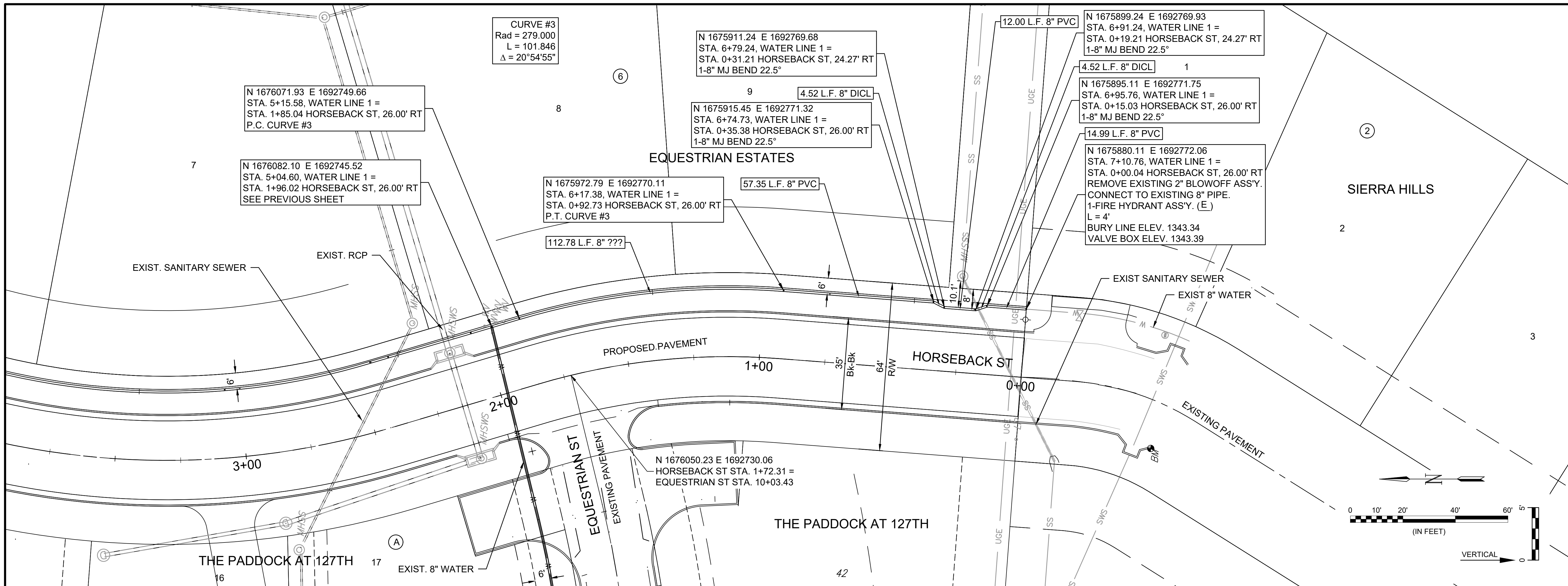


File: L:\2022\22141005 - Paddock Addition Phase 2\Drawings\DESIGN\WATER\WATER LINE 1 (2).dwg Last Save: 8/5/2024 11:38 AM Last saved by: SOSchmidt
 Last plotted by: Schmidt, Stephen O. Plot Style: --- Plot Scale: 1:2,849 Plot Date: 8/5/2024 11:48 AM Plotter used: None



CONTRACTOR SHALL FIELD VERIFY LOCATION AND DEPTH OF EXISTING MAIN AND COORDINATE WITH FIELD ENGINEER TO ADJUST AS NECESSARY TO MATCH.



© 2023 GARVER, LLC
 THIS DOCUMENT, ALONG WITH THE IDEAS AND DESIGNS CONVEYED HEREIN, SHALL BE CONSIDERED INSTRUMENTS OF PROFESSIONAL SERVICE AND ARE PROPERTY OF GARVER, LLC. ANY USE, REPRODUCTION, OR DISTRIBUTION OF THIS DOCUMENT, ALONG WITH THE IDEAS AND DESIGNS CONTAINED HEREIN, IS PROHIBITED UNLESS AUTHORIZED IN WRITING BY GARVER, LLC OR EXPLICITLY ALLOWED IN THE GOVERNING PROFESSIONAL SERVICES AGREEMENT FOR THIS WORK.

1995 Midfield Road
 Wichita, KS 67209
 (316) 264-8008



REV.	DATE	DESCRIPTION



CITY OF WICHITA
 WICHITA, KANSAS
 THE PADDOCK AT 127TH
 WATER - PHASE 2

WATER LINE 1
 - (2)

JOB NO.: 22T41005
 DATE: AUGUST 2024
 DESIGNED BY: .
 DRAWN BY: .

BAR IS ONE INCH ON ORIGINAL DRAWING
 IF NOT ONE INCH ON THIS SHEET, ADJUST SCALES ACCORDINGLY.

DRAWING NUMBER

SHEET NUMBER **6** OF **19**