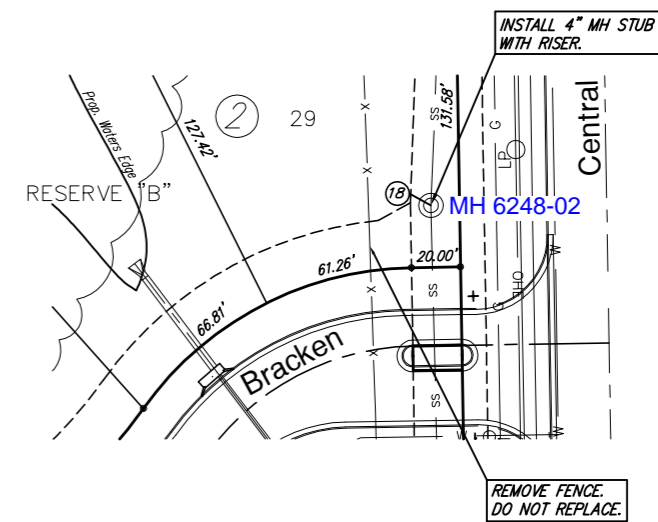
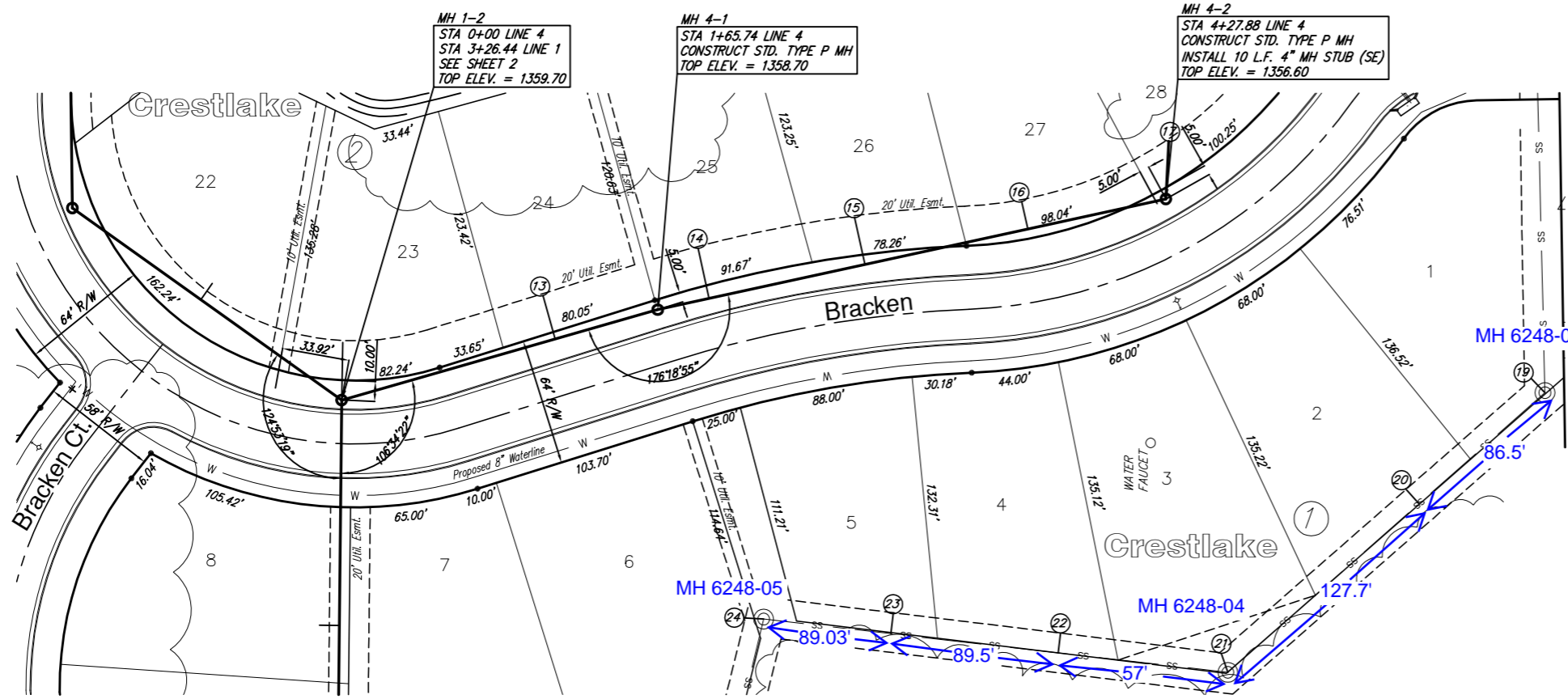


SEWER SERVICE TABLE

| NUMBER | TYPE               | LOCATION |           |          | STATION \ DIRECTION | FOR INFORMATION ONLY       |          |
|--------|--------------------|----------|-----------|----------|---------------------|----------------------------|----------|
|        |                    | LOT NO.  | BLOCK NO. | LINE NO. |                     | APPROXIMATE LENGTH 4" PIPE | VERTICAL |
| 13     | 8" X 4" Tee Saddle | 24       | 2         | 4        | 1+12/L              | 8'                         | 23'      |
| 14     | 8" X 4" Tee Saddle | 25       | 2         | 4        | 1+92/L              | 7'                         | 26'      |
| 15     | 8" X 4" Tee Saddle | 26       | 2         | 4        | 2+73/L              | 6'                         | 24'      |
| 16     | 8" X 4" Tee Saddle | 27       | 2         | 4        | 3+57/L              | 6'                         | 14'      |
| 17     | 4" MH Riser        | 28       | 2         | 4        | 4+57/L              | 5'                         | 29'      |
| 18     | 4" MH Riser        | 29       | 2         | --       | MH 6248-02          | 16'                        | 10'      |
| 19     | 4" MH Riser        | 1        | 1         | --       | MH 6248-03          | 13'                        | 10'      |
| 20     | 8" X 4" Tee Saddle | 2        | 1         | --       | SEE PLANS           | 11'                        | 10'      |
| 21     | 4" MH Riser        | 3        | 1         | --       | MH 6248-04          | 9'                         | 10'      |
| 22     | 8" X 4" Tee Saddle | 4        | 1         | --       | SEE PLANS           | 11'                        | 10'      |
| 23     | 8" X 4" Tee Saddle | 5        | 1         | --       | SEE PLANS           | 13'                        | 10'      |
| 24     | 4" MH Riser        | 6        | 1         | --       | MH 6248-05          | 15'                        | 10'      |

NOTE: Vertical Riser Pipe shall be extended to 2' minimum above ground water elevation and 4' maximum below proposed ground elevation.

Note: Risers #18 thru #24 placed on existing sewer line (FMC 035).



SCALE 1" = 40' HORIZ.  
1" = 5' VERT.  
IRON = ●

NOTE: ALL FRONT-LOADED SEWER BACKFILL SHALL BE SAND FLUSHED AND VIBRATED.



|      |                         |                          |          |
|------|-------------------------|--------------------------|----------|
| 1355 | DESIGN K/W              | PROJECT NUMBER 468-84182 | REVISION |
| 1350 | UTILITY                 | DRAWING FILE             | DATE     |
| 1345 | Sanitary Sewer (LINE 4) | May 24, 2006             | REVIEW   |
| 1340 |                         |                          |          |

**Ruggles & Bohm, P.A.**  
 Engineering, Surveying, Land Planning  
 924 North Main  
 Wichita, Kansas 67203  
 (316) 264-8008  
 (316) 264-4821 fax