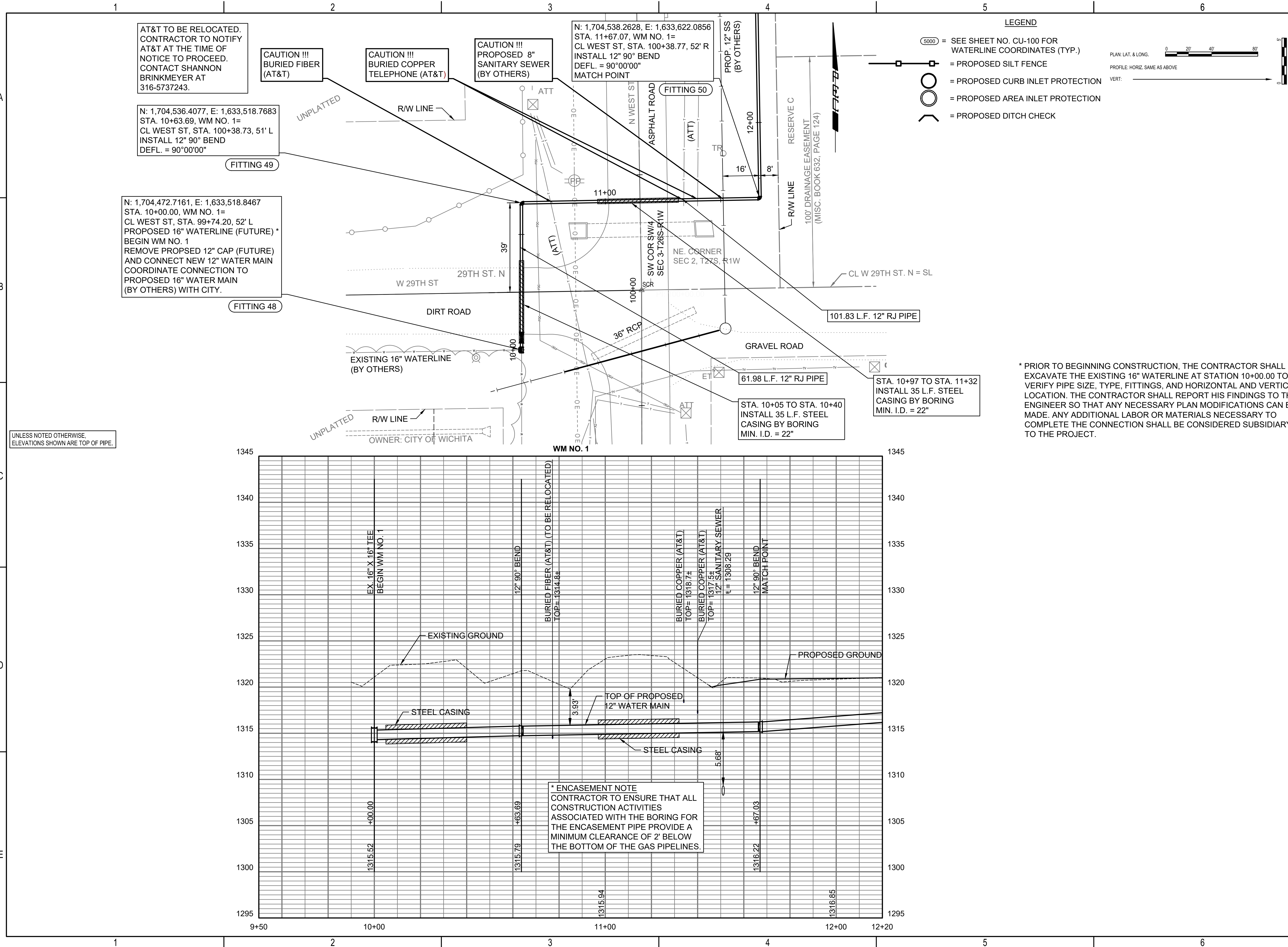
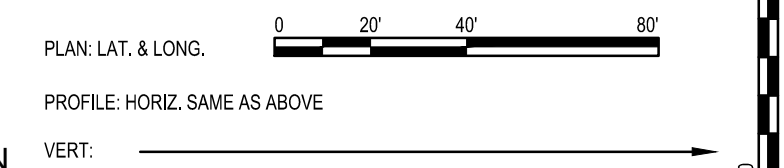


SAVED 8/27/2024 12:02:44 PM BY KEVIN.GRAHAM
 PLOTTED 8/28/2024 12:11:23 PM BY KEVIN.GRAHAM
 U:\WICHITA-CIVIL\2022\221170\001\PEC\DRAWINGS\OFFSITE WATER\221170-006-CU101.DWG



LEGEND

- (5000) = SEE SHEET NO. CU-100 FOR WATERLINE COORDINATES (TYP.)
- [Symbol] = PROPOSED SILT FENCE
- [Symbol] = PROPOSED CURB INLET PROTECTION
- [Symbol] = PROPOSED AREA INLET PROTECTION
- [Symbol] = PROPOSED DITCH CHECK



AT&T TO BE RELOCATED. CONTRACTOR TO NOTIFY AT&T AT THE TIME OF NOTICE TO PROCEED. CONTACT SHANNON BRINKMEYER AT 316-5737243.

CAUTION !!! BURIED FIBER (AT&T)

CAUTION !!! BURIED COPPER TELEPHONE (AT&T)

CAUTION !!! PROPOSED 8" SANITARY SEWER (BY OTHERS)

N: 1,704,538.2628, E: 1,633,622.0856
 STA. 11+67.07, WM NO. 1=
 CL WEST ST, STA. 100+38.77, 52' R
 INSTALL 12" 90° BEND
 DEFL. = 90°00'00"
 MATCH POINT

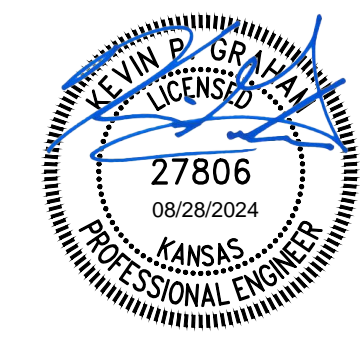
N: 1,704,536.4077, E: 1,633,518.7683
 STA. 10+63.69, WM NO. 1=
 CL WEST ST, STA. 100+38.73, 51' L
 INSTALL 12" 90° BEND
 DEFL. = 90°00'00"

N: 1,704,472.7161, E: 1,633,518.8467
 STA. 10+00.00, WM NO. 1=
 CL WEST ST, STA. 99+74.20, 52' L
 PROPOSED 16" WATERLINE (FUTURE) *
 BEGIN WM NO. 1
 REMOVE PROPOSED 12" CAP (FUTURE)
 AND CONNECT NEW 12" WATER MAIN
 COORDINATE CONNECTION TO
 PROPOSED 16" WATER MAIN
 (BY OTHERS) WITH CITY.

UNLESS NOTED OTHERWISE,
 ELEVATIONS SHOWN ARE TOP OF PIPE.

* PRIOR TO BEGINNING CONSTRUCTION, THE CONTRACTOR SHALL EXCAVATE THE EXISTING 16" WATERLINE AT STATION 10+00.00 TO VERIFY PIPE SIZE, TYPE, FITTINGS, AND HORIZONTAL AND VERTICAL LOCATION. THE CONTRACTOR SHALL REPORT HIS FINDINGS TO THE ENGINEER SO THAT ANY NECESSARY PLAN MODIFICATIONS CAN BE MADE. ANY ADDITIONAL LABOR OR MATERIALS NECESSARY TO COMPLETE THE CONNECTION SHALL BE CONSIDERED SUBSIDIARY TO THE PROJECT.

* ENCASUREMENT NOTE
 CONTRACTOR TO ENSURE THAT ALL CONSTRUCTION ACTIVITIES ASSOCIATED WITH THE BORING FOR THE ENCASUREMENT PIPE PROVIDE A MINIMUM CLEARANCE OF 2' BELOW THE BOTTOM OF THE GAS PIPELINES.



WATER DISTRIBUTION IMPROVEMENTS
 12" WATER MAIN ALONG N WEST ST.
 NORTH OF E 29TH ST N
 PAUL GUNZELMAN CITY ENGINEER
 CITY OF WICHITA PROJECT NO. 448-2024-011704

Issue:	
JOB NO.	221170-006
DATE	AUGUST 2024
PM	KPG
DESIGNED BY	KPG
DRAWN BY	HJW
CHECKED BY	TBK

WATER MAIN LINE NO. 1
 CU101