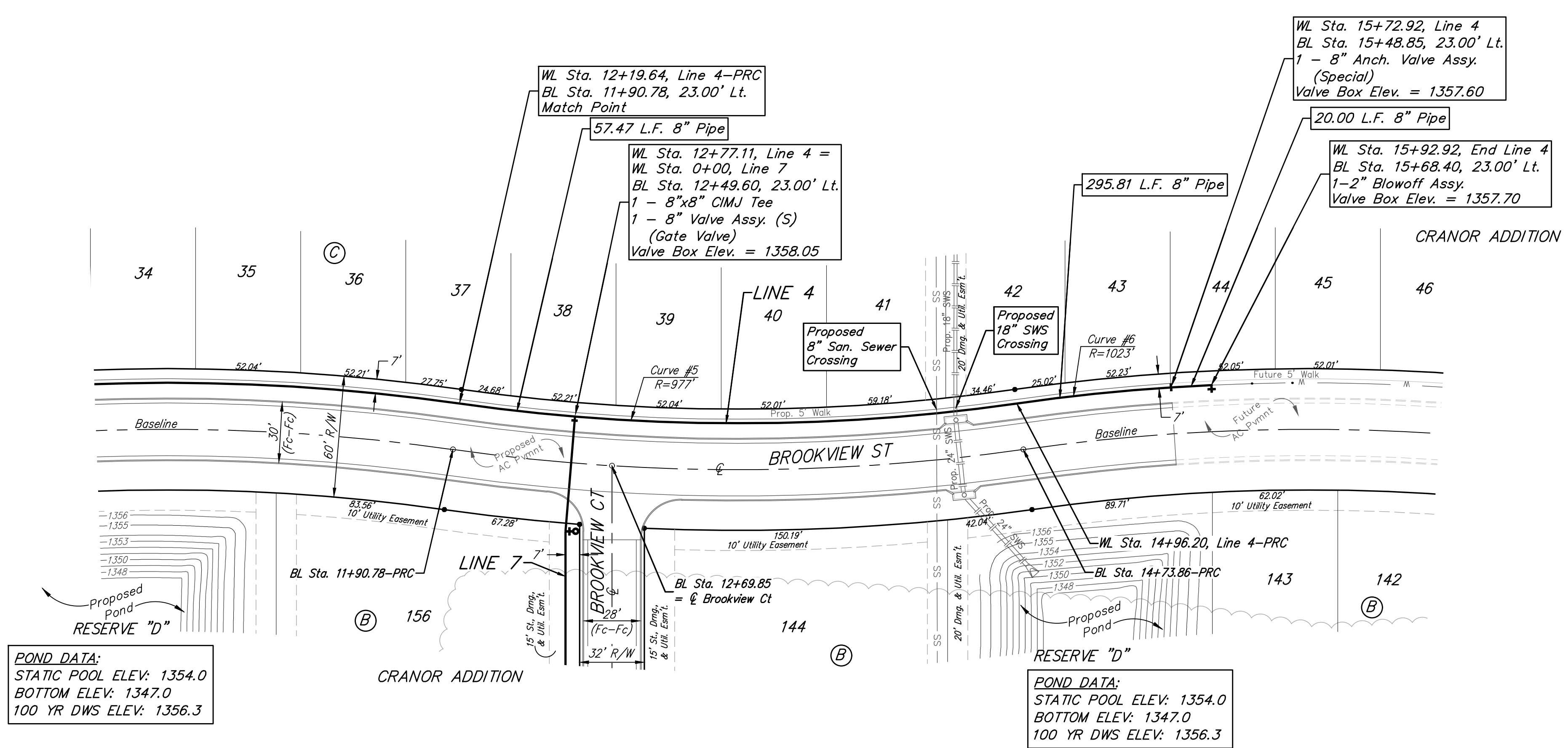


**BENCHMARKS:**  
 Square cut top of the south end of the east RCP 114.5'± north and 34.7'± east of the SW Cor., NW1/4, Sec. 31, Twp. 26-S, R-1-W. Elev. = 1358.12 NAVD88

"x" cut top of the east end of RCBC, 589.6'± north and 24.6'± east of the SW Cor., NW1/4, Sec. 31, Twp. 26-S, R-1-W. Elev. = 1359.71 NAVD88



**POND DATA:**  
 STATIC POOL ELEV: 1354.0  
 BOTTOM ELEV: 1347.0  
 100 YR DWS ELEV: 1356.3

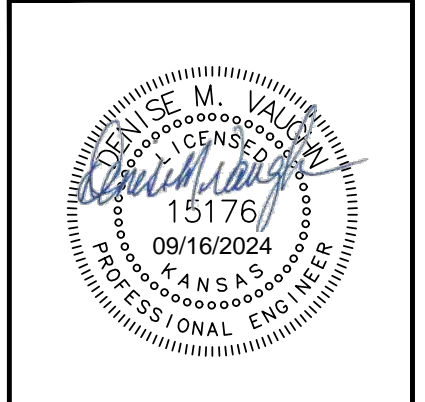
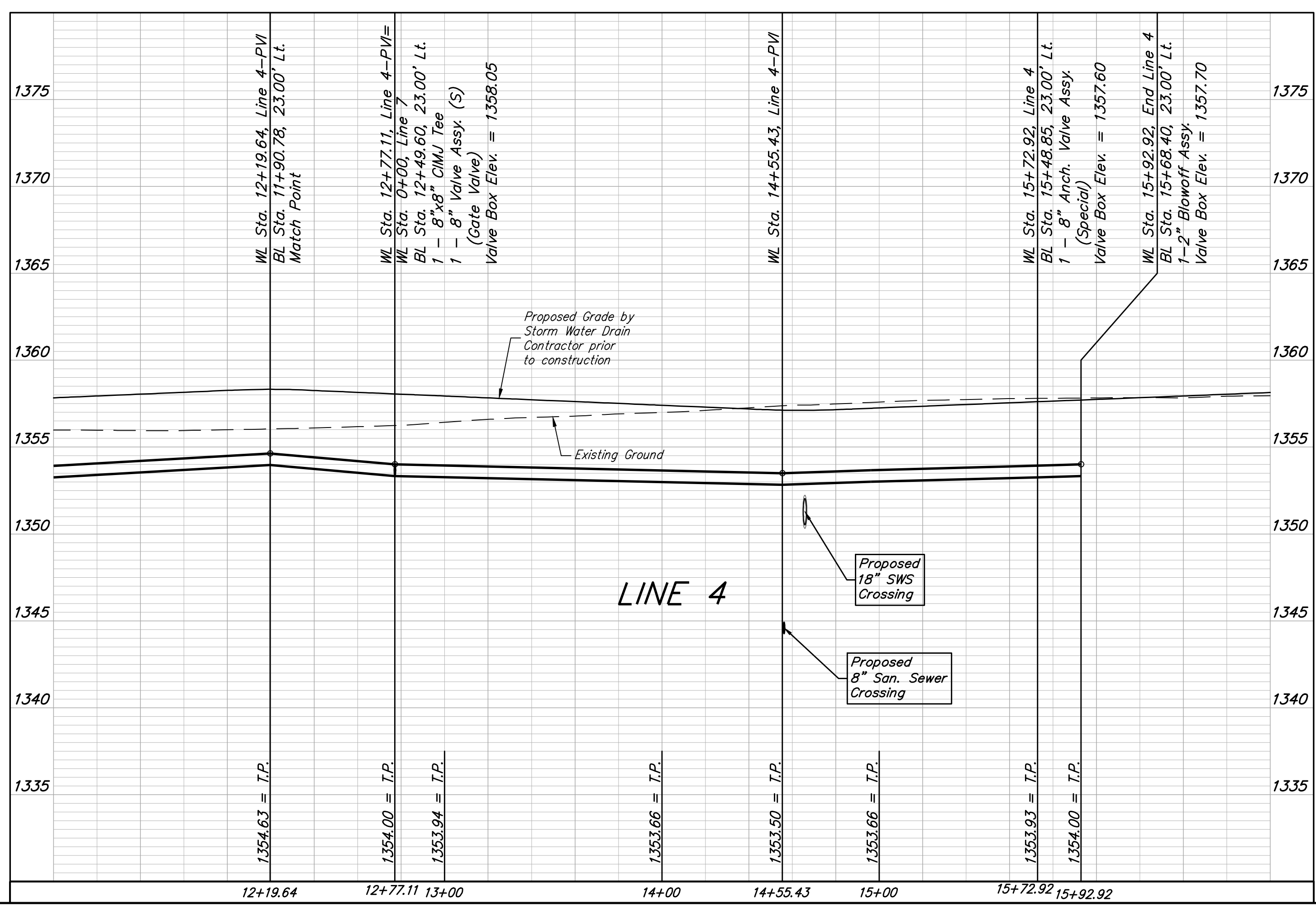
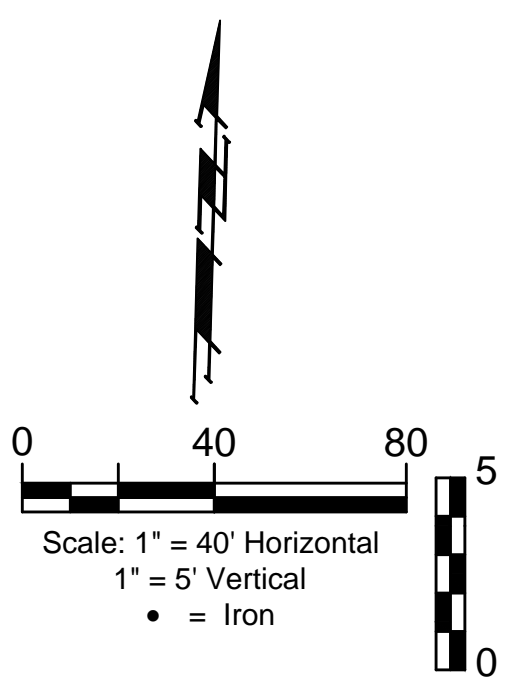
**POND DATA:**  
 STATIC POOL ELEV: 1354.0  
 BOTTOM ELEV: 1347.0  
 100 YR DWS ELEV: 1356.3

Curve #5  
 Curve Data Based on Centerline of Pipe  
 Rad. = 977' Delta = 161°3'09" Tangent = 139.21'  
 Arc = 276.56' L.C. = 275.64' Def./Ft. = 1.75938 Min.

Station	Arc	Chord Lengths 8' Left	Defl.	Total Defl.
12+19.64	-	-	0°00'00"	0°00'00"
12+25.00	5.36'	5.32'	0°09'26"	0°09'26"
12+50.00	25.00'	24.80'	0°43'59"	0°53'25"
12+75.00	25.00'	24.80'	0°43'59"	1°37'24"
12+77.11	2.11'	2.09'	0°03'43"	1°41'07"
13+00.00	22.89'	22.70'	0°40'16"	2°21'23"
13+25.00	25.00'	24.80'	0°43'59"	3°05'22"
13+50.00	25.00'	24.80'	0°43'59"	3°49'21"
13+75.00	25.00'	24.80'	0°43'59"	4°33'20"
14+00.00	25.00'	24.80'	0°43'59"	5°17'19"
14+25.00	25.00'	24.80'	0°43'59"	6°01'18"
14+50.00	25.00'	24.80'	0°43'59"	6°45'17"
14+75.00	25.00'	24.80'	0°44'00"	7°29'17"
14+96.20	21.20'	21.03'	0°37'17"	8°06'34"

Curve #6  
 Curve Data Based on Centerline of Pipe  
 Rad. = 1023' Delta = 52°5'01" Tangent = 48.40'  
 Arc = 96.72' L.C. = 96.68' Def./Ft. = 1.68019 Min.

Station	Arc	Chord Lengths 8' Left	Defl.	Total Defl.
14+96.20	-	-	0°00'00"	0°00'00"
15+00.00	3.80'	3.83'	0°06'23"	0°06'23"
15+25.00	25.00'	25.19'	0°42'00"	0°48'23"
15+50.00	25.00'	25.19'	0°42'01"	1°30'24"
15+72.95	22.95'	23.13'	0°38'33"	2°08'57"
15+75.00	2.05'	2.07'	0°03'27"	2°12'24"
15+92.92	17.92'	18.06'	0°30'07"	2°42'31"



**BAUGHMAN COMPANY**  
 315 Ellis St.  
 Wichita, KS 67211  
 316-262-7271  
 BaughmanCo.com

CRANOR ADDITION  
 PHASE I

**LINE 4**

WATER DISTRIBUTION SYSTEM  
 PROJECT NUMBER:  
 DESIGN: DMV DRAWN: JAK  
 DATE: Sep. 12, 2024  
 SHEET 10 OF 28