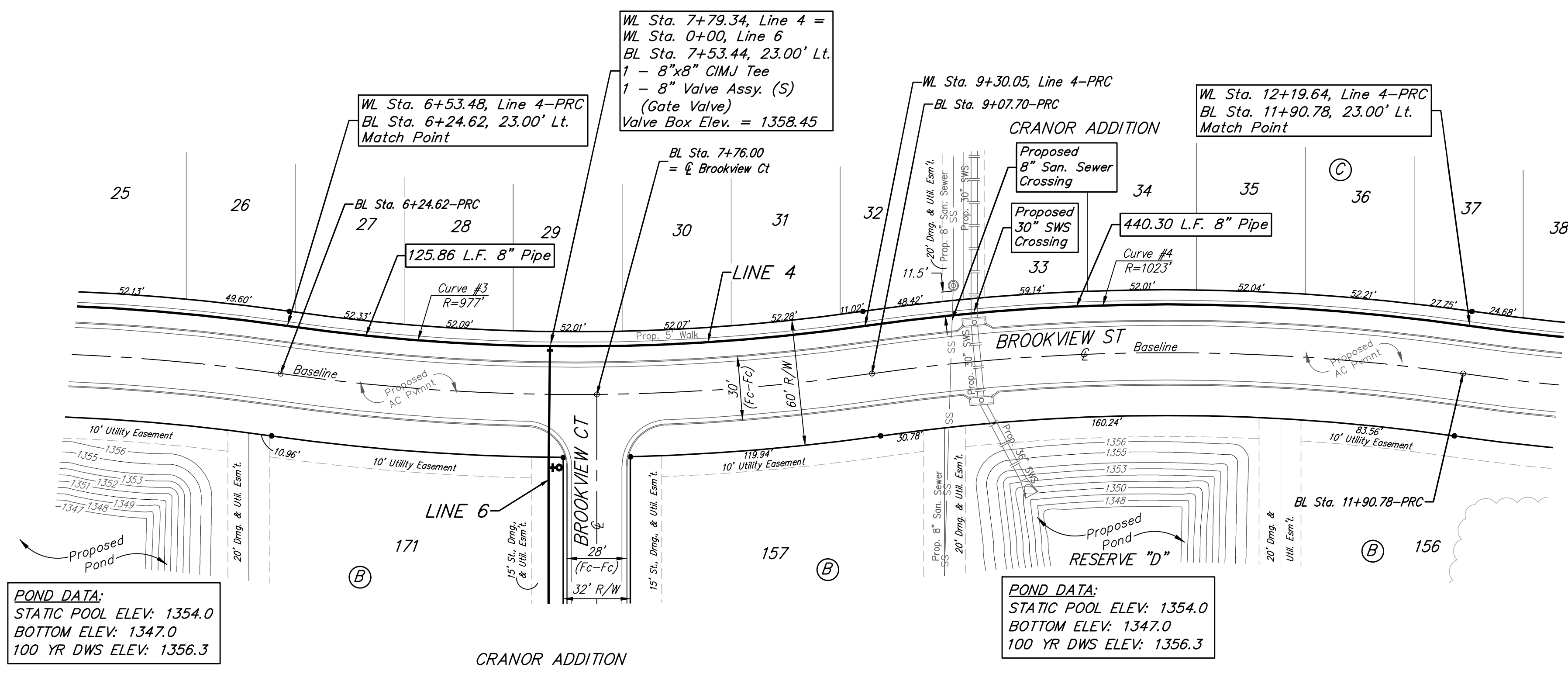


BENCHMARKS:
 Square cut top of the south end of the east RCP 114.5'± north and 34.7'± east of the SW Cor., NW1/4, Sec. 31, Twp. 26-S, R-1-W. Elev. = 1358.12 NAVD88

"+" cut top of the east end of RCBC, 589.6'± north and 24.6'± east of the SW Cor., NW1/4, Sec. 31, Twp. 26-S, R-1-W. Elev. = 1359.71 NAVD88



POND DATA:
 STATIC POOL ELEV: 1354.0
 BOTTOM ELEV: 1347.0
 100 YR DWS ELEV: 1356.3

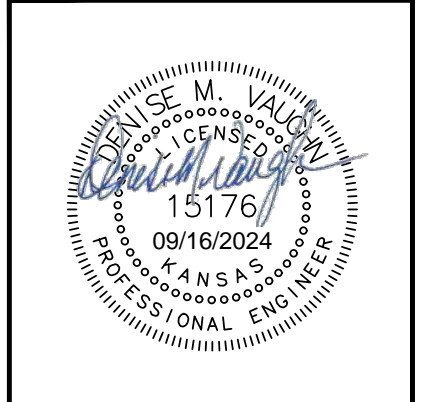
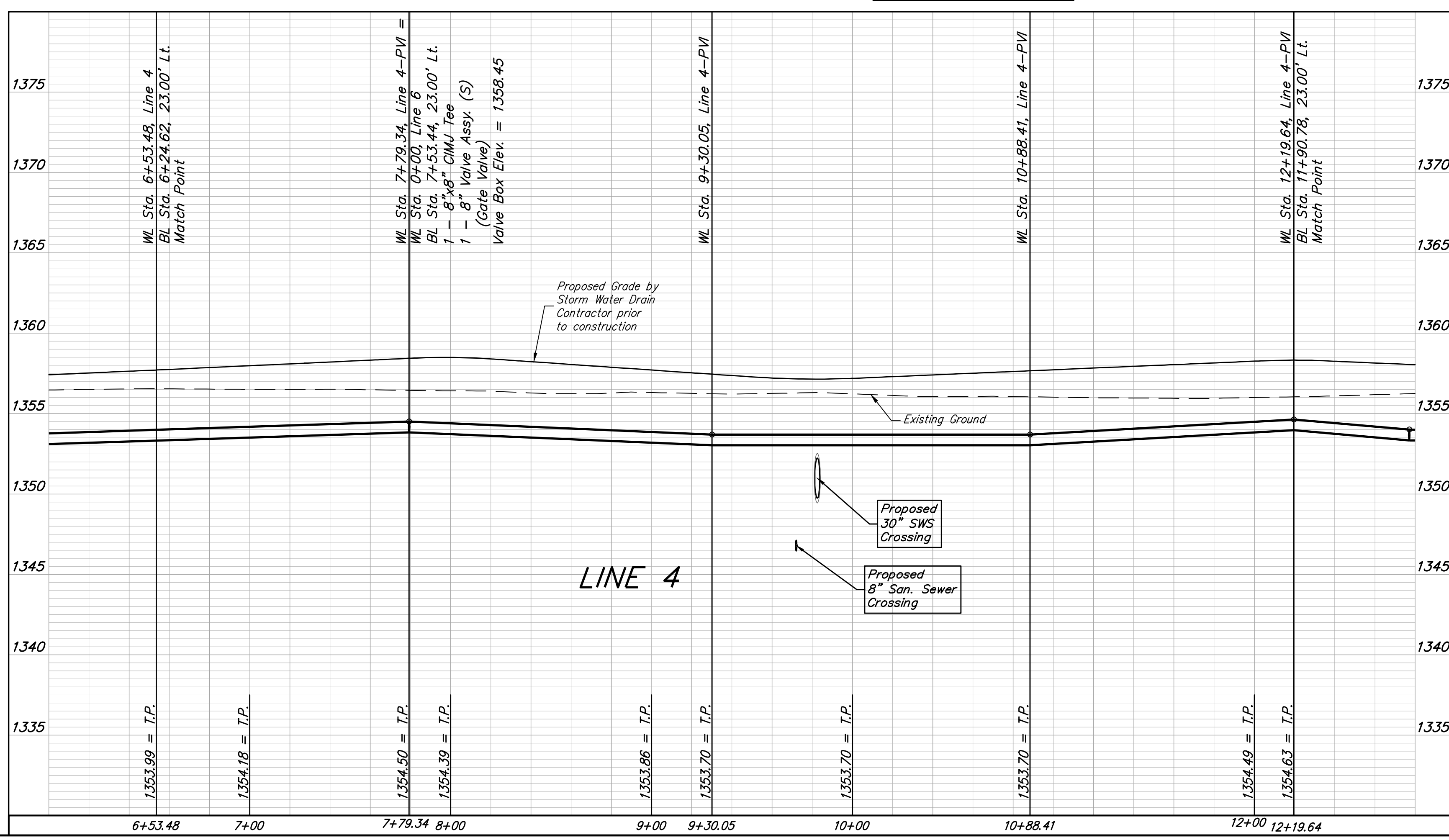
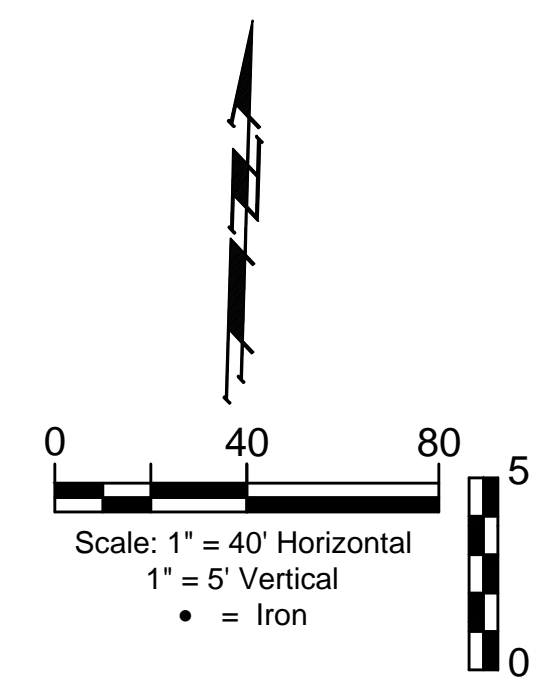
POND DATA:
 STATIC POOL ELEV: 1354.0
 BOTTOM ELEV: 1347.0
 100 YR DWS ELEV: 1356.3

Curve #3
 Curve Data Based on Centerline of Pipe
 Rad. = 977' Delta = 16°13'09" Tangent = 139.21'
 Arc = 276.57' L.C. = 275.64' Def./Ft. = 1.75932 Min.

Station	Arc	Chord Lengths		Total Defl.
		8' Left	Defl.	
6+53.48	-	-	0°00'00"	0°00'00"
6+75.00	21.52'	21.34'	0°37'52"	0°37'52"
7+00.00	25.00'	24.79'	0°43'59"	1°21'51"
7+25.00	25.00'	24.79'	0°43'59"	2°05'50"
7+50.00	25.00'	24.79'	0°43'59"	2°49'49"
7+75.00	25.00'	24.79'	0°43'59"	3°33'48"
7+79.34	4.34'	4.30'	0°07'38"	3°41'26"
8+00.00	20.66'	20.49'	0°36'21"	4°17'47"
8+25.00	25.00'	24.79'	0°43'59"	5°01'46"
8+50.00	25.00'	24.79'	0°43'59"	5°45'44"
8+75.00	25.00'	24.79'	0°43'59"	6°29'43"
9+00.00	25.00'	24.79'	0°43'59"	7°13'42"
9+25.00	25.00'	24.79'	0°43'59"	7°57'41"
9+30.05	5.05'	5.01'	0°08'53"	8°06'34"

Curve #4
 Curve Data Based on Centerline of Pipe
 Rad. = 1023' Delta = 16°13'09" Tangent = 145.77'
 Arc = 289.59' L.C. = 288.62' Def./Ft. = 1.68022 Min.

Station	Arc	Chord Lengths		Total Defl.
		8' Left	Defl.	
9+30.05	-	-	0°00'00"	0°00'00"
9+50.00	19.95'	20.11'	0°33'31"	0°33'31"
9+75.00	25.00'	25.19'	0°42'01"	1°15'32"
10+00.00	25.00'	25.19'	0°42'00"	1°57'32"
10+25.00	25.00'	25.19'	0°42'00"	2°39'32"
10+50.00	25.00'	25.19'	0°42'01"	3°21'33"
10+75.00	25.00'	25.19'	0°42'00"	4°03'33"
11+00.00	25.00'	25.19'	0°42'00"	4°45'33"
11+25.00	25.00'	25.19'	0°42'01"	5°27'34"
11+50.00	25.00'	25.19'	0°42'00"	6°09'34"
11+75.00	25.00'	25.19'	0°42'00"	6°51'34"
12+00.00	25.00'	25.19'	0°42'01"	7°33'35"
12+19.64	19.64'	19.79'	0°32'59"	8°06'34"



BAUGHMAN COMPANY
 315 Ellis St.
 Wichita, KS 67211
 316-262-7271
 BaughmanCo.com

CRANOR ADDITION
 PHASE I
LINE 4
 WATER DISTRIBUTION SYSTEM
 PROJECT NUMBER:
 DESIGN: DMV DRAWN: JAK
 DATE: Sep. 12, 2024
 SHEET 9 OF 28

File: E:\Projects\Cranor Addition\Kelsey 119th_22-04-P768\Engineering\Phase 1\WTR_23-03-E466.dwg