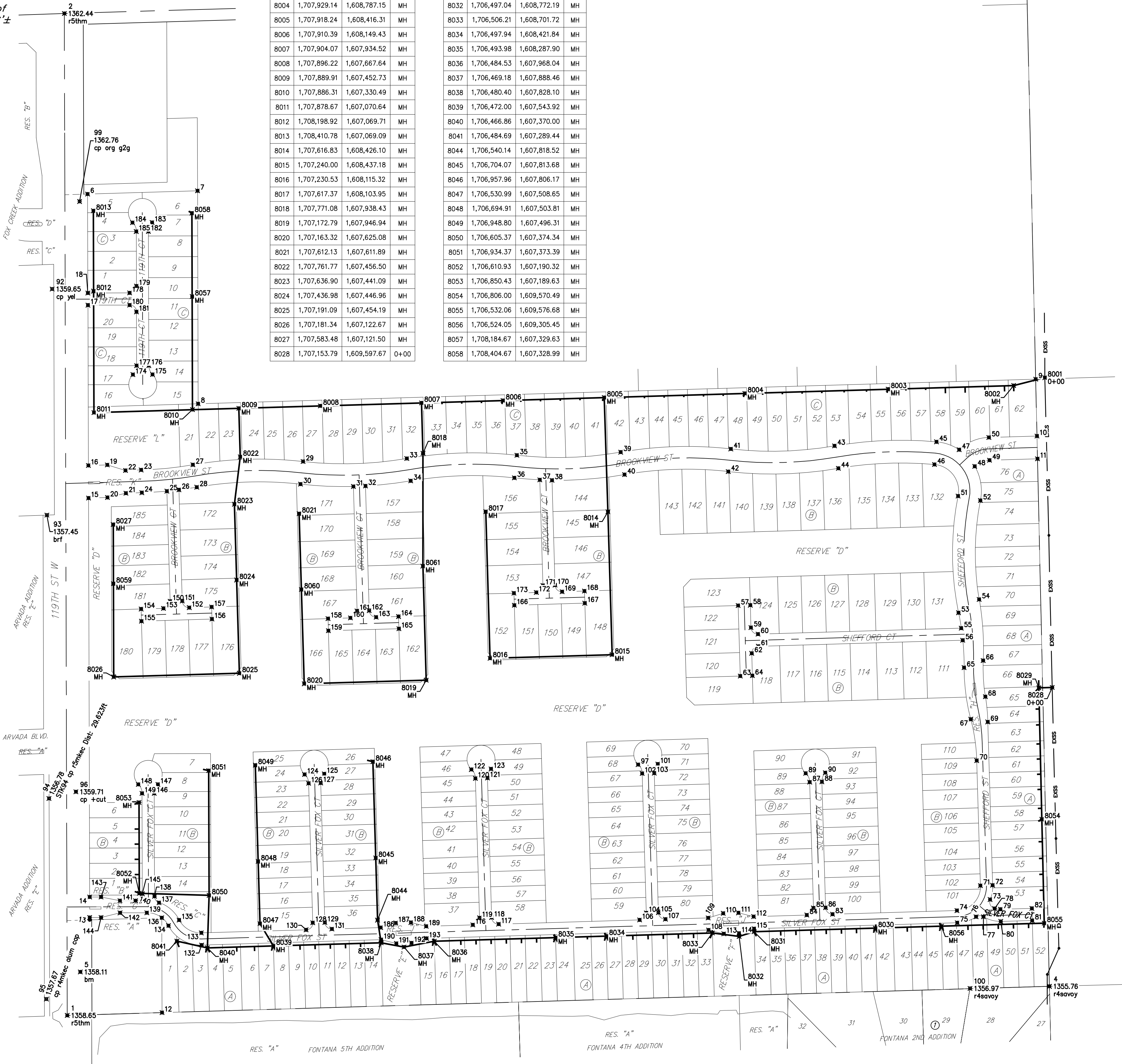


BENCHMARKS:
 Square cut top of the south end of the east RCP 114.5'± north and 34.7'± east of the SW Cor., NW1/4, Sec. 31, Twp. 26-S, R-1-W. Elev. = 1358.12 NAVD88

"4" cut top of the east end of RCBC, 589.6'± north and 24.6'± east of the SW Cor., NW1/4, Sec. 31, Twp. 26-S, R-1-W. Elev. = 1359.71 NAVD88



Point	Northing	Easting	Desc
8001	1,707,970.65	1,609,578.45	O+00
8002	1,707,949.98	1,609,496.03	MH
8003	1,707,940.25	1,609,164.99	MH
8004	1,707,929.14	1,608,787.15	MH
8005	1,707,918.24	1,608,416.31	MH
8006	1,707,910.39	1,608,149.43	MH
8007	1,707,904.07	1,607,934.52	MH
8008	1,707,896.22	1,607,667.64	MH
8009	1,707,889.91	1,607,452.73	MH
8010	1,707,886.31	1,607,330.49	MH
8011	1,707,878.67	1,607,070.64	MH
8012	1,708,198.92	1,607,069.71	MH
8013	1,708,410.78	1,607,069.09	MH
8014	1,707,616.83	1,608,426.10	MH
8015	1,707,240.00	1,608,437.18	MH
8016	1,707,230.53	1,608,115.32	MH
8017	1,707,617.37	1,608,103.95	MH
8018	1,707,771.08	1,607,938.43	MH
8019	1,707,172.79	1,607,946.94	MH
8020	1,707,163.32	1,607,625.08	MH
8021	1,707,612.13	1,607,611.89	MH
8022	1,707,761.77	1,607,456.50	MH
8023	1,707,636.90	1,607,441.09	MH
8024	1,707,436.98	1,607,446.96	MH
8025	1,707,191.09	1,607,454.19	MH
8026	1,707,181.34	1,607,122.67	MH
8027	1,707,583.48	1,607,121.50	MH
8028	1,707,153.79	1,609,597.67	O+00

Point	Northing	Easting	Desc
8029	1,707,152.78	1,609,562.66	MH
8030	1,706,518.91	1,609,131.53	MH
8031	1,706,509.46	1,608,811.67	MH
8032	1,706,497.04	1,608,772.19	MH
8033	1,706,506.21	1,608,701.72	MH
8034	1,706,497.94	1,608,421.84	MH
8035	1,706,493.98	1,608,287.90	MH
8036	1,706,484.53	1,607,968.04	MH
8037	1,706,469.18	1,607,888.46	MH
8038	1,706,480.40	1,607,828.10	MH
8039	1,706,472.00	1,607,543.92	MH
8040	1,706,466.86	1,607,370.00	MH
8041	1,706,484.69	1,607,289.44	MH
8044	1,706,540.14	1,607,818.52	MH
8045	1,706,704.07	1,607,813.68	MH
8046	1,706,957.96	1,607,806.17	MH
8047	1,706,530.99	1,607,508.65	MH
8048	1,706,694.91	1,607,503.81	MH
8049	1,706,948.80	1,607,496.31	MH
8050	1,706,605.37	1,607,374.34	MH
8051	1,706,934.37	1,607,373.39	MH
8052	1,706,610.93	1,607,190.32	MH
8053	1,706,850.43	1,607,189.63	MH
8054	1,706,806.00	1,609,570.49	MH
8055	1,706,532.06	1,609,576.68	MH
8056	1,706,524.05	1,609,305.45	MH
8057	1,708,184.67	1,607,329.63	MH
8058	1,708,404.67	1,607,328.99	MH

Point	Northing	Easting	Desc
8059	1,707,427.43	1,607,121.95	MH
8060	1,707,412.22	1,607,617.76	MH
8061	1,707,473.66	1,607,938.10	MH

Point	Northing	Easting	Point	Northing	Easting	Point	Northing	Easting
1	1,706,288.86	1,607,000.26	71	1,706,631.14	1,609,408.53	142	1,706,559.28	1,607,139.47
2	1,708,931.12	1,606,992.58	72	1,706,632.08	1,609,440.51	143	1,706,601.13	1,607,089.35
3	1,709,005.74	1,609,530.78	73	1,706,594.42	1,609,434.01	144	1,706,547.13	1,607,089.51
4	1,706,365.40	1,609,590.45	74	1,706,565.28	1,609,346.44	145	1,706,609.45	1,607,198.33
5	1,706,403.51	1,607,034.58	75	1,706,533.29	1,609,347.39	146	1,706,874.49	1,607,229.56
6	1,708,454.88	1,607,053.96	76	1,706,548.81	1,609,396.95	147	1,706,898.09	1,607,239.39
7	1,708,463.41	1,607,343.82	77	1,706,549.02	1,609,416.27	148	1,706,897.94	1,607,187.59
8	1,707,901.76	1,607,345.45	78	1,706,570.59	1,609,445.83	149	1,706,874.40	1,607,197.56
9	1,707,966.70	1,609,554.26	79	1,706,568.67	1,609,461.18	150	1,707,380.80	1,607,271.54
10	1,707,816.73	1,609,557.65	80	1,706,536.68	1,609,462.12	151	1,707,381.74	1,607,303.52
11	1,707,756.75	1,609,559.01	81	1,706,539.13	1,609,544.89	152	1,707,364.28	1,607,322.05
12	1,706,296.25	1,607,250.15	82	1,706,571.12	1,609,544.17	153	1,707,362.28	1,607,254.08
13	1,706,547.05	1,607,059.51	83	1,706,555.59	1,609,018.59	154	1,707,360.55	1,607,195.10
14	1,706,601.05	1,607,059.35	84	1,706,553.58	1,608,950.62	155	1,707,328.56	1,607,196.04
15	1,707,653.15	1,607,056.29	85	1,706,572.11	1,608,968.08	156	1,707,334.03	1,607,381.96
16	1,707,739.18	1,607,056.04	86	1,706,573.05	1,609,000.06	157	1,707,366.01	1,607,381.02
17	1,708,161.88	1,607,054.82	87	1,706,903.97	1,608,958.27	158	1,707,335.25	1,607,688.06
18	1,708,193.88	1,607,054.72	88	1,706,904.92	1,608,990.26	159	1,707,303.26	1,607,689.00
19	1,707,740.65	1,607,106.02	89	1,706,927.24	1,608,947.68	160	1,707,336.98	1,607,747.03
20	1,707,654.62	1,607,106.26	90	1,706,928.77	1,608,999.46	161	1,707,355.50	1,607,764.49
21	1,707,666.06	1,607,154.94	92	1,708,204.51	1,606,960.38	162	1,707,356.44	1,607,796.48
22	1,707,726.05	1,607,153.83	93	1,707,608.33	1,606,946.58	163	1,707,338.98	1,607,815.00
23	1,707,727.27	1,607,195.21	94	1,706,860.90	1,606,952.05	164	1,707,340.71	1,607,873.98
24	1,707,667.29	1,607,196.98	95	1,706,331.87	1,606,945.20	165	1,707,308.73	1,607,874.92
25	1,707,671.36	1,607,263.00	96	1,706,878.59	1,607,023.10	166	1,707,370.47	1,608,179.25
26	1,707,674.86	1,607,294.91	97	1,706,950.19	1,608,505.81	167	1,707,375.94	1,608,365.17
27	1,707,740.99	1,607,331.71	98	1,705,509.39	1,607,037.27	168	1,707,407.92	1,608,364.21
28	1,707,681.86	1,607,341.91	99	1,708,435.23	1,607,032.72	169	1,707,406.19	1,608,305.24
29	1,707,749.53	1,607,622.18	100	1,706,359.97	1,609,381.03	170	1,707,423.65	1,608,286.72
30	1,707,689.90	1,607,615.46	101	1,706,951.72	1,608,557.59	171	1,707,422.71	1,608,254.73
31	1,707,683.71	1,607,754.85	102	1,706,926.93	1,608,516.40	172	1,707,404.19	1,608,237.27
32	1,707,684.96	1,607,786.82	103	1,706,927.88	1,608,548.39	173	1,707,402.46	1,608,178.29
33	1,707,757.57	1,607,895.73	104	1,706,559.08	1,608,527.27	174	1,707,978.82	1,607,173.45
34	1,707,698.44	1,607,905.94	105	1,706,560.03	1,608,559.26	175	1,707,978.97	1,607,225.25
35	1,707,766.11	1,608,186.21	106	1,706,540.56	1,608,509.81	176	1,708,002.51	1,607,215.28
36	1,707,706.48	1,608,179.49	107	1,706,542.57	1,608,577.78	177	1,708,002.41	1,607,183.28
37	1,707,701.14	1,608,246.55	108	1,706,513.91	1,608,691.48	178	1,708,194.20	1,607,164.72
38	1,707,700.14	1,608,278.59	109	1,706,545.90	1,608,690.54	179	1,708,212.25	1,607,182.67
39	1,707,774.15	1,608,459.76	110	1,706,558.07	1,608,730.20	180	1,708,162.20	1,607,164.81
40	1,707,715.02	1,608,469.96	111	1,706,559.26	1,608,770.18	181	1,708,144.25	1,607,182.87
41	1,707,782.69	1,608,750.23	112	1,706,549.44	1,608,810.49	182	1,708,356.19	1,607,214.25
42	1,707,723.07	1,608,743.52	113	1,706,540.10	1,608,731.79	183	1,708,379.78	1,607,224.08
43	1,707,790.73	1,609,023.78	114	1,706,505.28	1,608,771.77	184	1,708,379.63	1,607,172.28
44	1,707,731.61	1,609,033.99	115	1,706,517.46	1,608,811.43	185	1,708,356.09	1,607,182.25
45	1,707,801.47	1,609,292.68	116	1,706,527.56	1,608,070.00	186	1,706,520.38	1,607,828.92
46	1,707,741.72	1,609,287.22	117	1,706,529.57	1,608,137.97	187	1,706,532.56	1,607,866.57
47	1,707,780.56	1,609,352.38	118	1,706,547.03	1,608,119.45	188	1,706,533.74	1,607,906.56
48	1,707,736.88	1,609,393.51	119	1,706,546.09	1,608,087.46	189	1,706,523.92	1,607,946.86
49	1,707,753.03	1,609,432.55	120	1,706,913.94	1,608,076.59	190	1,706,488.39	1,607,827.86
50	1,707,813.00	1,609,430.79	121	1,706,914.88	1,608,108.58	191	1,706,478.58	1,607,868.17
51	1,707,658.46	1,609,349.53	122	1,706,937.20	1,608,066.00	192	1,706,479.76	1,607,908.15
52	1,707,646.85	1,609,408.39	123	1,706,938.73	1,608,117.78	193	1,706,491.94	1,607,947.81
53	1,707,350.77	1,609,350.69	124	1,706,924.21	1,607,626.19			
54	1,707,385.98	1,609,405.11	125	1,706,925.73	1,607,677.97			
55	1,707,310.00	1,609,357.84	126	1,706,900.94	1,607,636.78			
56	1,707,278.10	1,609,361.77	127	1,706,901.89	1,607,668.77			
57	1,707,369.74	1,608,769.65	128	1,706,533.09	1,607,647.65			
58	1,707,370.68	1,608,801.63	129	1,706,534.04	1,607,679.64			
59	1,707,311.71	1,608,803.37	130	1,706,514.57	1,607,630.19			
60	1,707,294.24	1,608,821.89	131	1,706,516.58	1,607,698.16			
61	1,707,262.26	1,608,822.83	132	1,706,474.41	1,607,354.68			
62	1,707,243.74	1,608,805.37	133	1,706,506.40	1,607,353.73			
63	1,707,183.82	1,608,775.11	134	1,706,525.44	1,607,267.00			
64	1,707,184.76	1,608,807.10	135	1,706,540.42	1,607,295.28			
65	1,707,206.03	1,609,365.38	136	1,706,546.25	1,607,249.42			
66	1,707,224.49	1,609,415.73	137	1,706,586.02	1,607,242.36			
67	1,707,069.89	1,609,383.01	138	1,706,602.95	1,607,230.35			
68	1,707,129.30	1,609,421.49	139	1,706,559.49	1,607,210.26			
69	1,707,062.79	1,609,427.79	140	1,706,591.40	1,607,180.38	</		