

LEGACY 3RD ADDITION

POINT NUMBER	NORTHING	EASTING	ELEVATION
304	20150.8909	18656.5300	1275.00
305	20120.3141	18655.4312	1275.00
306	2011.9712	18644.0035	1275.00
307	2011.8905	18622.7459	1275.00
308	2011.1838	18594.6326	1275.00
309	20107.5361	18576.5119	1275.00
310	20064.4680	18533.3762	1275.00
311	20052.5144	18538.3396	1275.00
312	20052.7570	18634.9417	1275.00
313	20049.3572	18643.7395	1275.00
314	20044.1796	18649.4099	1275.00
315	20036.9140	18670.0773	1275.00
316	20037.4762	18705.0224	1275.00
318	20089.6590	18705.6991	1275.00
319	20103.6414	18702.9756	1275.00
320	2013.8208	18698.5522	1275.00
321	20120.5019	18698.0939	1275.00
322	20150.8909	18706.5300	1275.00

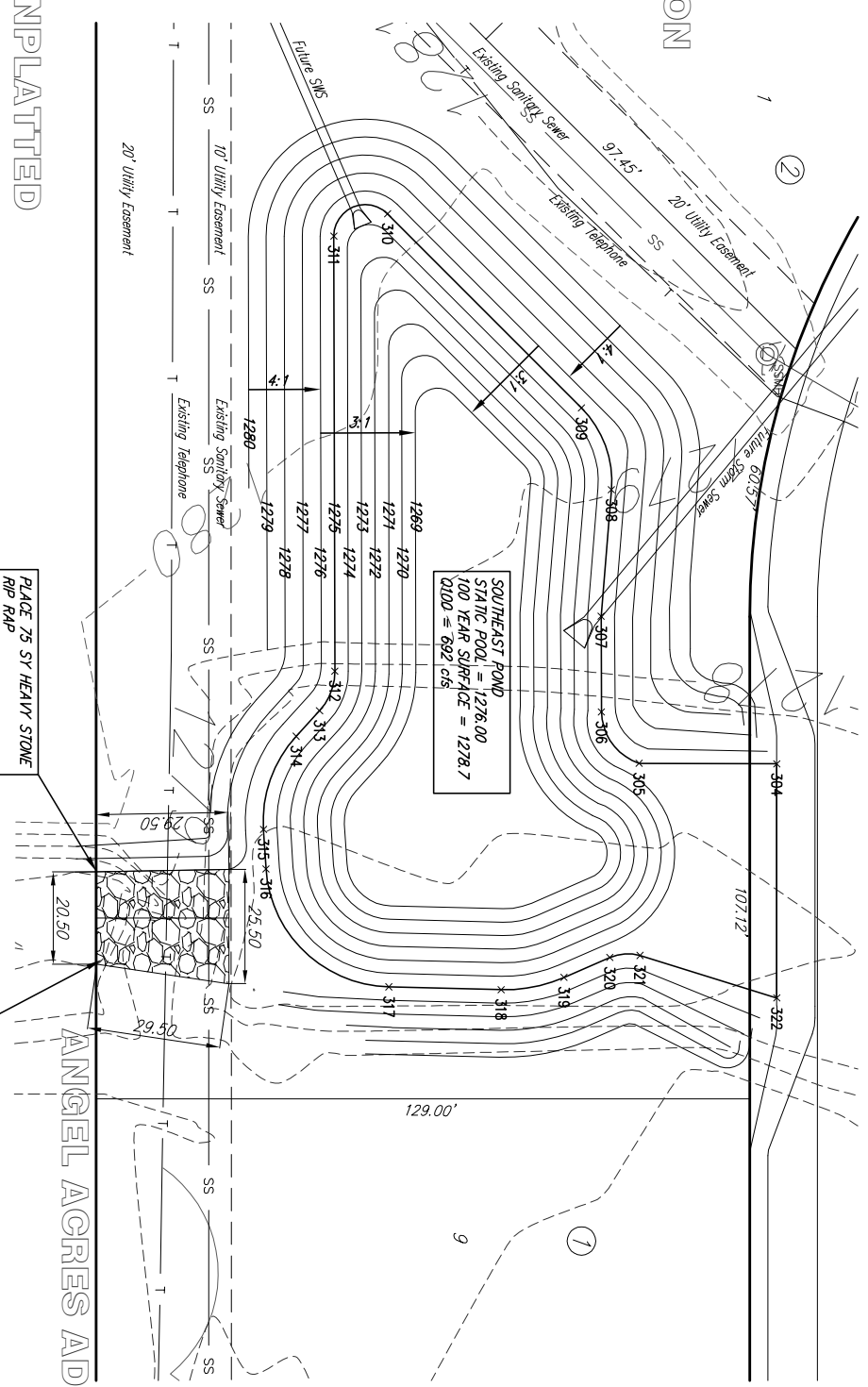
UNPLATTED

NOTE: A pond liner will be required on the pond indicated on this sheet. Onsite material approved by the Engineer may be used for the pond liner. Subsidiary to the bid item for Excavation.

REGRADE OPENING TO MATCH EXISTING CHANNEL TO SOUTH.

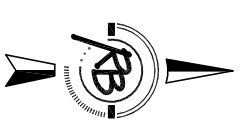
PLACE 75 SY HEAVY STONE RIP-RAP

ANGEL ACRES ADDITION



SOUTHEAST POND
 STATIC POOL = 1276.00
 100 YEAR SURFACE = 1278.7
 Q100 = 692 cfs

NOTE: A soil sample is to be obtained at the bottom of the pond excavation at the time of excavation. If soil sample tested has a Pl of greater than 30, then the pond bottom shall be scarified a minimum of 8 inches and compacted to 95 percent of standard proctor density (ASTM D-698) from -3% to +3% of optimum moisture. Additionally, all gypsum/caliche, sandy/clay, and clay shale encountered should be excavated a minimum of 1 foot and replaced with clay.



SCALE 1" = 20'

Legacy 3rd Addition Pond #4 Details WICHITA, KANSAS

	Rugsles & Bohm, P.A. Engineering, Surveying, Land Farming 924 North Main Wichita, Kansas 67203 www.rtkansas.com	(316) 264-8008 (316) 264-4821 fax E-mail: info@rtkansas.com
	DESIGN: KML DRAWN: RLS REVIEW: RLS UTILITY	PROJECT NUMBER: 468-84350 DATE: July 25, 2007