

GENERAL NOTES:

- The Contractor shall comply with all applicable safety regulations. All construction shall be completed following current City Standard Specifications and Special Provisions.
- Contractor will be required to provide notice to utility companies a minimum of seventy-two (72) hours prior to any excavation, as follows:
 - Kansas One-Call 687-2470

The Contractor must notify the following in case of an emergency:

 - AT&T 1-800-246-8464
 - Black Hills Energy 1-800-694-8989
 - City of Wichita Water & Sewer 1-316-219-8921
 - City of Wichita Stormwater 1-316-268-4090
 - City of Wichita Traffic 1-316-268-4034
 - Cox Communications 1-888-249-3530
 - Kansas Gas Service 1-888-482-4950
 - Westar Energy 1-800-544-4857
- Utility service lines, poles, etc. are to be adjusted as necessary by others prior to construction unless the plans specifically call for their adjustment by the Contractor or unless the plans specifically identify a utility to be adjusted by its owner during construction. Existing utilities and their location, as shown on the plans, represent the best information obtainable for design. The Contractor will be required to work around existing utilities within the right-of-way which do not conflict with proposed construction.
- Rubble from the removal of miscellaneous structures and excess excavation which is to be wasted shall be disposed of on sites to be provided by the Contractor. These sites shall be approved by the Engineer as to suitability, appearance and site location. Locations, in the opinion of the Engineer, that will leave an unsightly appearance will not be approved. All disposal sites must be approved by the Kansas Department of Health and Environment. Material either stockpiled or disposed of in a flood plain will require a Kansas State Board of Agriculture permit. Any material dumped in waters of the United States or wetlands is subject to U.S. Corps of Engineers permitting regulations. Any material buried or stockpiled beyond approved construction limits will require additional archaeological investigations unless buried in a previously approved borrow location.
- Trees and shrubs in public right-of-way which are in direct conflict with proposed new construction shall be removed by the Contractor with the City Engineer's approval. Trees and shrubs which are not in direct conflict with proposed new construction shall be saved and protected from damage.
- The Contractor shall give all property owners and/or tenants of developed property abutting the construction of this project a minimum of ten (10) days notice prior to start of construction.
- The Contractor shall be responsible for preserving property irons. The Contractor will be required to re-establish any property irons which are damaged or destroyed by his construction operations. Such irons shall be re-established by a licensed land surveyor in accordance with state laws.
- The Engineering Division shall field locate water valves one time during construction when requested by the Contractor. It shall be the Contractor's responsibility to preserve such field locations during the construction process. Water valves, valve boxes or fire hydrants damaged during construction shall be repaired by Contractor at his own expense. Valve boxes and water meters within the project limits shall be adjusted to match final grades by the contractor.
- If traffic will be impacted by construction, a traffic control plan must be submitted and approved by the City Traffic Engineer, Mike Armour at traffic@wichita.gov before construction can begin. The Contractor shall be responsible for all traffic control measures to facilitate construction. All construction zone markings and signage shall conform to the latest version of the Manual on Uniform Traffic Control Devices (MUTCD) as published by the US Dept. of Transportation, Federal Highway Administration. All costs associated with construction markings and signage shall be the Contractors responsibility.
- All elevations shown are NAVD 88.
- All areas disturbed during construction that will not be under proposed pavement shall be restored to match existing conditions.

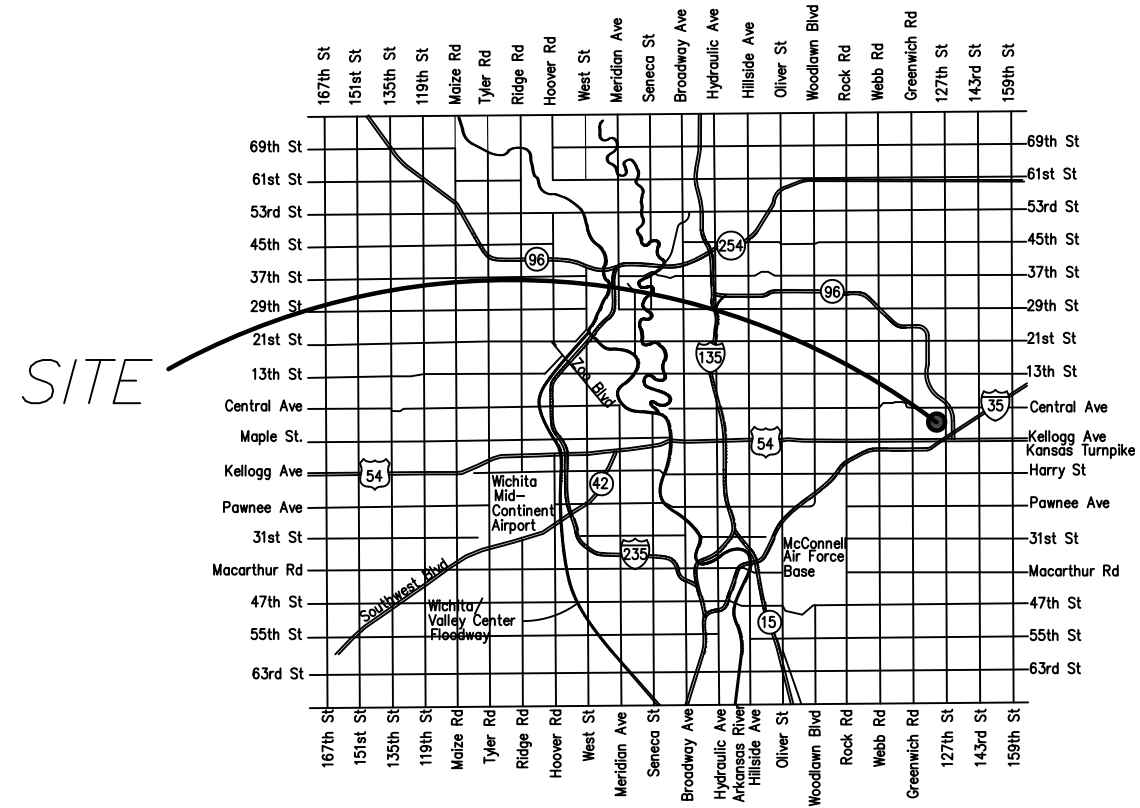
Developer:
 Steve Miller
 Build Wichita
steve@buildwichita.com
 316-259-2377

August 29, 2024

SANITARY SEWER TO SERVE JACKSON HEIGHTS TOWNHOMES 2ND ADDITION CITY OF WICHITA, KANSAS

PAUL GUNZELMAN, P.E. CITY ENGINEER

Project Number: 468-2023-032523
 Org Code: 47271624
 Munis Number: E4064



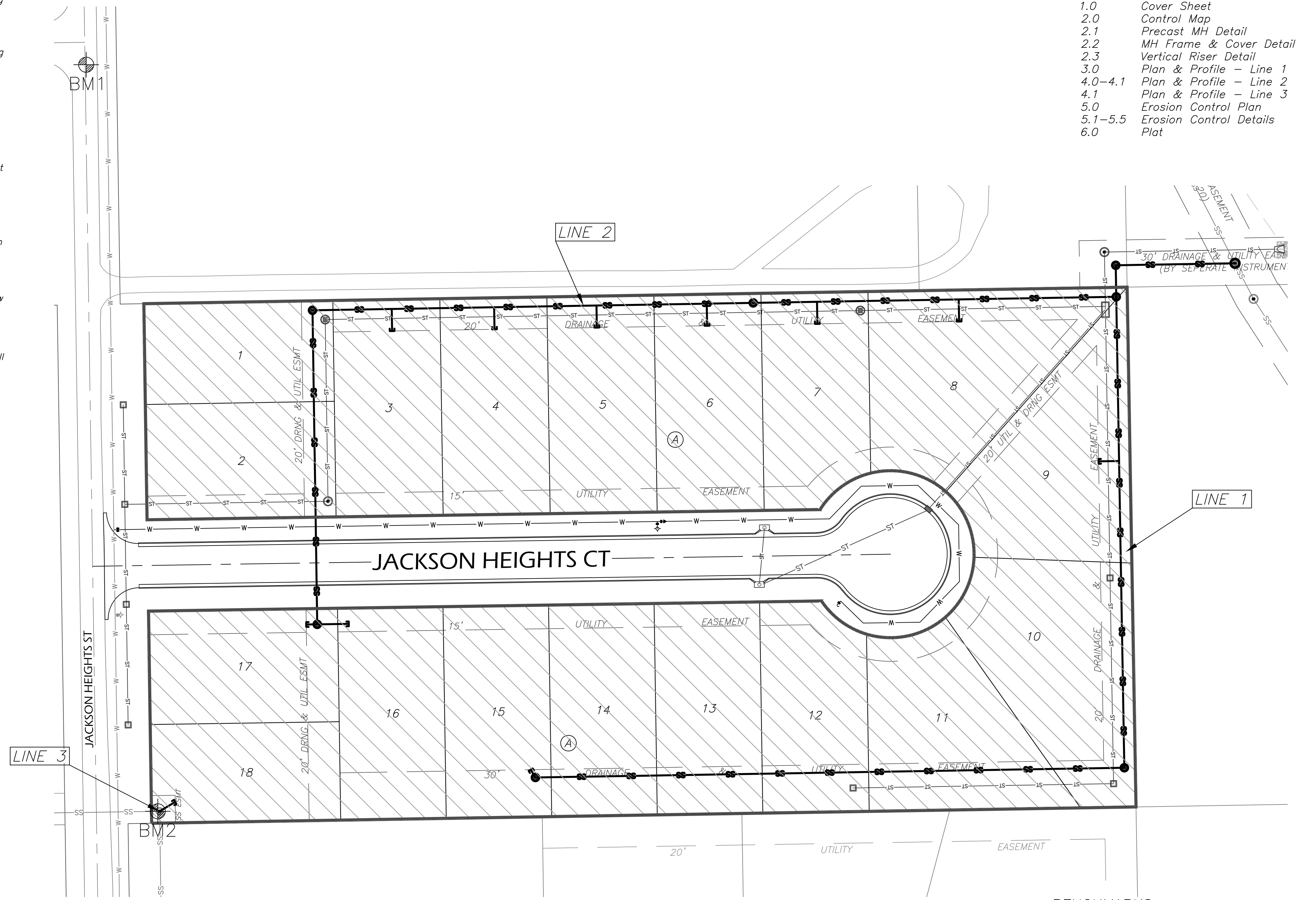
KEMILLER ENGINEERING
 117 E. Lewis, Wichita, KS 67202 (316)264-0242

THIS SHEET HAS BEEN SIGNED, SEALED AND DATED DIGITALLY

Vicinity Map (For Reference Only)

INDEX OF SHEETS:

- 1.0 Cover Sheet
- 2.0 Control Map
- 2.1 Precast MH Detail
- 2.2 MH Frame & Cover Detail
- 2.3 Vertical Riser Detail
- 3.0 Plan & Profile - Line 1
- 4.0-4.1 Plan & Profile - Line 2
- 4.1 Plan & Profile - Line 3
- 5.0 Erosion Control Plan
- 5.1-5.5 Erosion Control Details
- 6.0 Plat

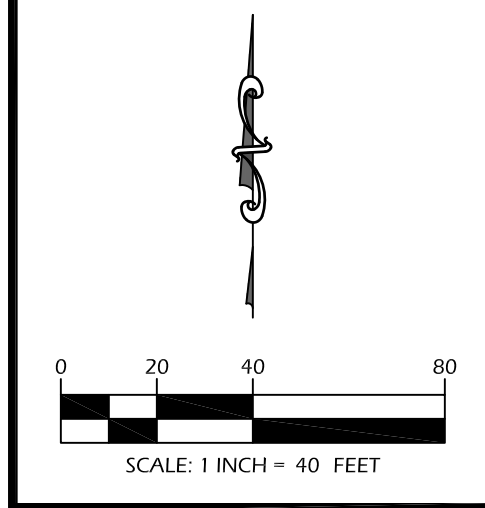


BENCHMARKS:

- BM1: Magnail in asphalt on Jackson Heights Street Approx. 151' North and 36' West of the NW Corner of Lot 1 Block 1. Directly across from Overbrook Lane. Elevation = 1360.39 (NAVD 88)
- BM2: West Rim of SS MH, Approx. 7' north and 4' east of the SW corner of Lot 18 Block 1. Elevation = 1364.39 (NAVD 88).

Benefit Area

SANITARY SEWER JACKSON HEIGHTS TOWNHOMES 2ND ADDITION WICHITA, KANSAS



REVISIONS	

KEM PROJ. 23044	DATE 08.2024
DESIGNED KEM	DRAWN ZJS

Title Sheet

SHEET **1.0**

AUGUST 2024