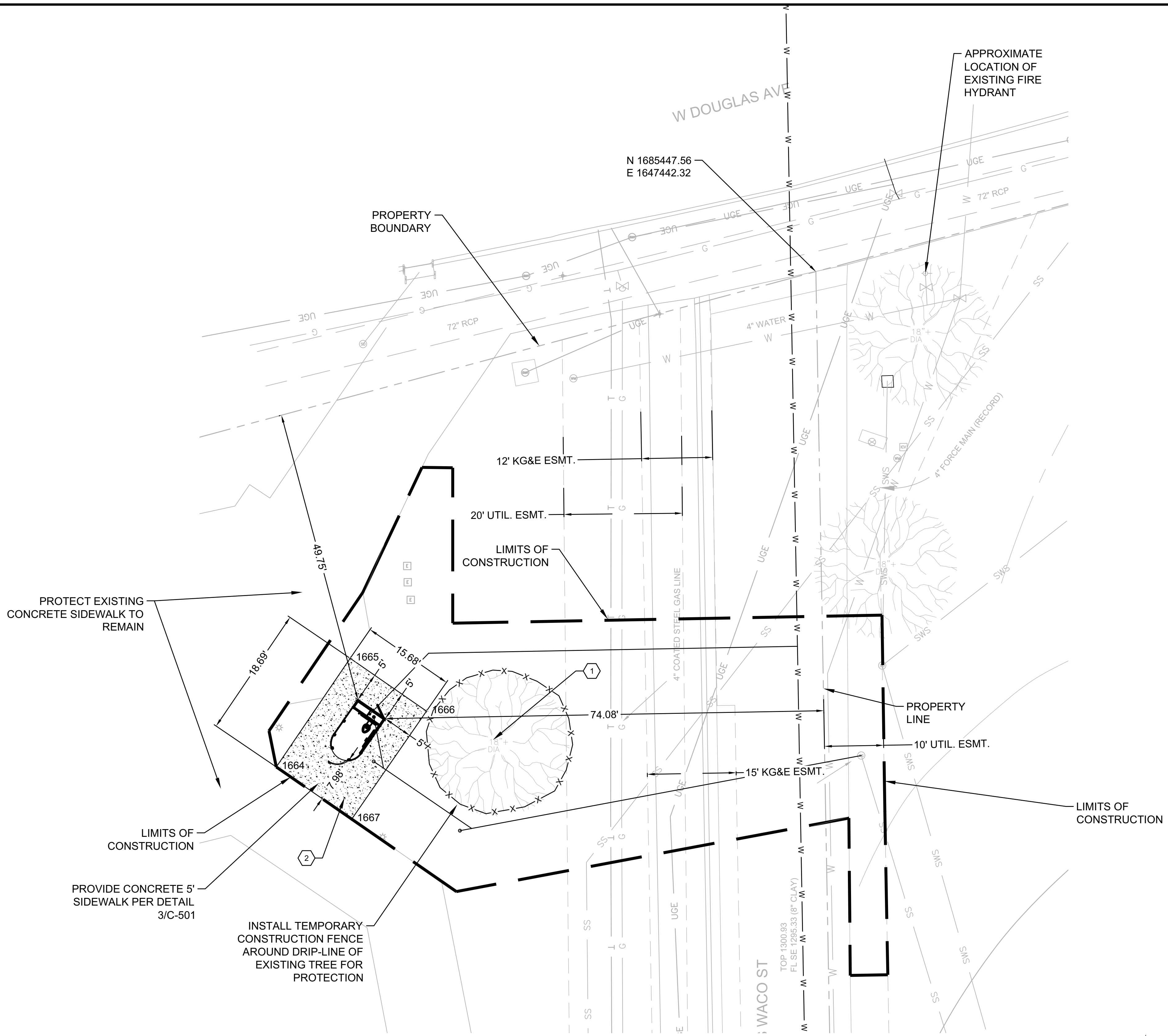
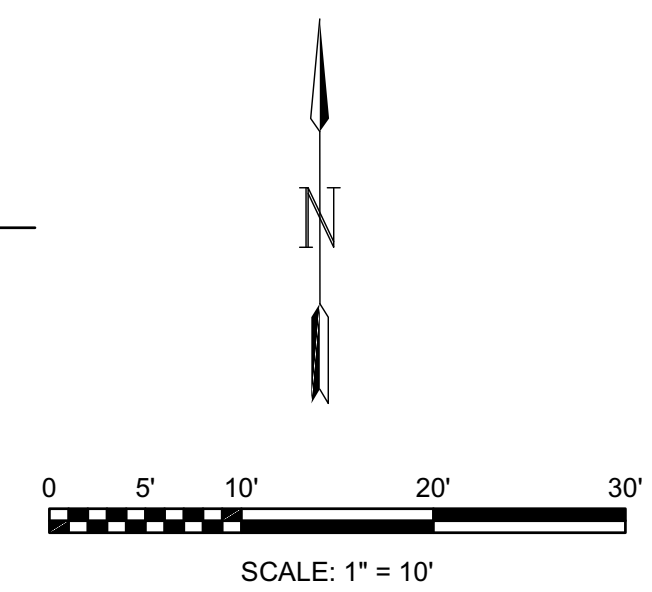


File: I:\2023\102-2301675 - wichita downtown park restrooms\CAD_BIML_Sheets\A_Price Woodard\WDRA_CS101-SITE PLAN.dwg Last Save: 5/20/2024 3:01 PM Last saved by: CJWyant
 Last plotted by: Wyant, Charles J. (CJ) Plot Scale: 1:1 Plot Date: 5/20/2024 3:05 PM Plotter used: AutoCAD PDF (General Documentation).pc3



1 SITE PLAN
 SCALE: 1" = 10'



LEGAL DESCRIPTION
 Lot 1, Block 1 East Bank Development Addition

LEGEND

- PROVIDE CONCRETE SIDEWALK PAVEMENT
- LIMITS OF CONSTRUCTION

GRADING NOTES
 TOP SURFACE OF VALVE BOXES AND MANHOLES SHALL BE FLUSH WITH ADJACENT CONCRETE OR GRASS SURFACE.

- KEYNOTES**
- 1 EXISTING TREE TO REMAIN. DO NOT DRIVE OVER OR STORE MATERIALS WITHIN DRIPLINE. DO NOT EXCAVATE WITHIN DRIPLINE. HAND DIG IN THESE AREAS.
 - 2 PROVIDE 4" CONCRETE SIDEWALK

EDGE OF CONCRETE		
Point #	Northing	Easting
1664	1685363.8800	1647351.1800
1665	1685382.2054	1647363.6994
1666	1685373.3120	1647376.5493
1667	1685355.0702	1647363.9243

Wichita-Sedgwick County
 Metropolitan Area Building
 and Construction Department

REVIEWED FOR CODE COMPLIANCE

CORRECTIONS OR COMMENTS MADE ON THESE DRAWINGS SHALL BE THE RESPONSIBILITY OF THE CONTRACTOR FROM COMPLIANCE WITH ALL REQUIREMENTS OF THE CODE OF THE MABCD, THE CITY OF WICHITA OR SEDGWICK COUNTY. THIS REVIEW IS ONLY FOR GENERAL PERFORMANCE OF THE CODE. THE CONTRACTOR IS RESPONSIBLE FOR CONFORMING AND CORRECTING ALL TECHNIQUES OF CONSTRUCTION. THIS APPROVAL IS SUBJECT TO PROVISIONS OF SECTION 197.4 OF THE 2012 International Building Code.

PROVIDE CONCRETE SIDEWALK PAVEMENT

LIMITS OF CONSTRUCTION

© 2023 GARVER, LLC
 THIS DOCUMENT, ALONG WITH THE IDEAS AND DESIGNS CONVEYED HEREIN, SHALL BE CONSIDERED INSTRUMENTS OF PROFESSIONAL SERVICE AND ARE PROPERTY OF GARVER, LLC. ANY USE, REPRODUCTION, OR DISTRIBUTION OF THIS DOCUMENT, ALONG WITH THE IDEAS AND DESIGN CONTAINED HEREIN, IS PROHIBITED UNLESS AUTHORIZED IN WRITING BY GARVER, LLC OR EXPLICITLY ALLOWED IN THE GOVERNING PROFESSIONAL SERVICES AGREEMENT FOR THIS WORK.

1995 Midfield Road
 Wichita, KS 67209
 (316) 264-8008

REV.	DATE	DESCRIPTION	BY

CITY OF WICHITA
 DEPT. OF PARKS AND RECREATION
 WICHITA, KS 67202

2024 PARK FACILITY
 ENHANCEMENTS-
 A. PRICE WOODARD
 RESTROOMS PROJECT

SITE PLAN

JOB NO.: F02-2301675
 DATE: FEB. 2024
 DESIGNED BY: SRS
 DRAWN BY: CJW

BAR IS ONE INCH ON ORIGINAL DRAWING
 IF NOT ONE INCH ON THIS SHEET, ADJUST SCALES ACCORDINGLY.

DRAWING NUMBER
CS101

SHEET NUMBER
5