

13TH STREET NORTH

1356 N. Wellington

MH # 5448-083  
Reconstruct Manhole  
Approx depth = 2.7 ft

MH # 5448-080  
Reconstruct Manhole  
Approx depth = 5.6 ft

MH # 5448-077  
Reconstruct Manhole  
Approx depth = 5.0 ft

Remove & Replace  
290 lf of 8" Pipe

# 5448-084E  
Capped End of Pipe  
(nothing visible at surface)  
(See notes on tv log)

MH # 5448-073  
Reconstruct Manhole  
Approx depth = 5.3 ft

MH # 5448-076  
Reconstruct Manhole  
Approx depth = 4.7 ft

WELLINGTON

MAIN

MARKET

FAIRVIEW

284'

290'

33'

310'

96'

(unpaved alley)

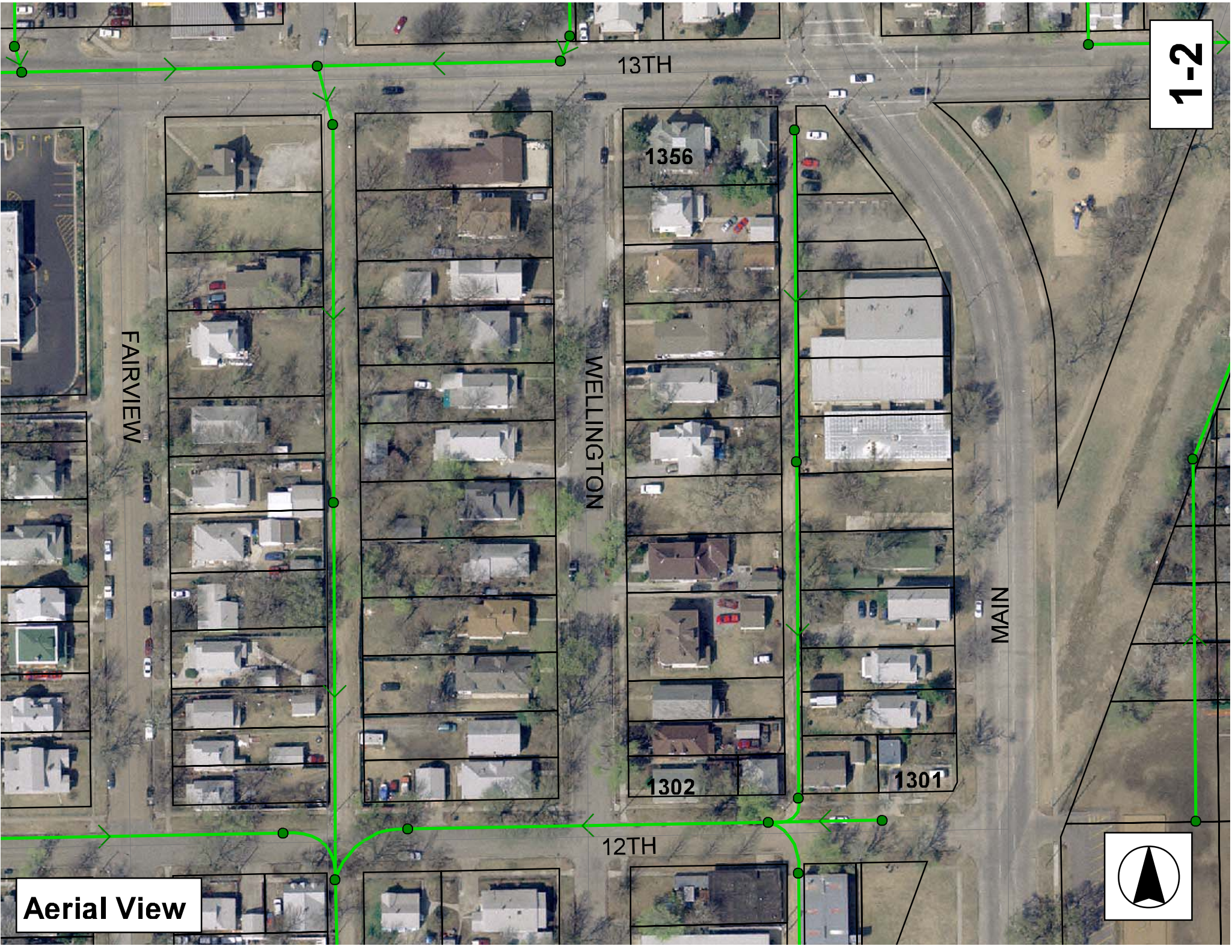
1301 N. Main

123 W. 12th St.

1-1

SITE 1





1-2

FAIRVIEW

WELLINGTON

MAIN

13TH

12TH

1356

1302

1301

Aerial View



# Television Inspection Master Report

7/9/2007  
2:19 PM

**US Structure:** 5448-080      1330 N WELLINGTON PL PL      **Date Insp:** 2/5/2007      **Basin:** C03D  
**DS Structure:** 5448-077      116 W 12TH ST      **Dir Televised:** Upstream To Downstream

## Pipe Information

Shape: Round      Length Status:      Project No.: A-085  
 Dia/Ht Width: 8 0      Material: VCP      Index:  
 Length: 289.2      Slope: 0.246      Surface:

## Inspection Information

Crew: 694      Percent Full:      Tape ID: DVD #0245  
 Weather: Sunny      Purpose: TV Existing Line      Counter Start:  
 Surface Cond: Trees & Fences      Flow: Normal Flow      Counter Stop:

Obs. #	VTR Counter	Distance	Location	Description	Rating	Obsrvd (gpm)	Est. (gpm)	Ratings		Remain (gpm)
								Struct	Clean	
1		0.0	US Manhole	5448-080	1	0.000	0	0	0.000	
2		10.7		Sealed Off Wye West	3	0.003	0	0	0.003	
3		13.0		BROKEN SEAL AND DEBRIS Sealed Off Wye East	3	0.003	0	0	0.003	
4		29.0	West	BROKEN SEAL AND DEBRIS Break-In Conn	1	0.001	0	0	0.001	
5		36.0		VACANT LOT Sealed Off Wye West	3	0.003	0	0	0.003	
6		39.0	East	BROKEN SEAL & DIRT Wye Service	1	0.000	0	0	0.000	
7		62.0		VACANT LOT Sealed Off Wye West	2	0.002	0	0	0.002	
8		64.0		BROKEN SEAL Sealed Off Wye East	2	0.002	0	0	0.002	
9		77.0	East	BROKEN SEAL Break-In Conn	1	0.001	0	0	0.001	
10		78.0	Upper Right	POSSIBLY ABANDON? Broken Pipe	3	0.010	60	0	0.010	
11		87.0		NEXT TO CONNECTION Sealed Off Wye West	1	0.000	0	0	0.000	
12		89.0		Sealed Off Wye East	2	0.002	0	0	0.002	
13		99.0		CRACKED SEAL Observation Hole	1	0.000	0	0	0.000	
14		112.0	West	Wye Service	3	0.000	2	0	0.000	
15		114.0		ROOTS 1320 N WELLINGTON (active) Sealed Off Wye North	2	0.002	0	0	0.002	
16		137.0	West	DEBRIS Wye Service	4	0.000	60	0	0.000	
17		139.7		ROOTS 1310 NORTH WELLINGTON Sealed Off Wye East	3	0.003	0	0	0.003	
18		163.0		CRACKED SEAL AND DEBRIS Sealed Off Wye West	3	0.003	0	0	0.003	
				DEBRIS						

# Television Inspection Master Report

7/9/2007  
2:19 PM

US Structure: 5448-080      1330 N WELLINGTON PL PL      Date Insp: 2/5/2007      Basin: C03D  
 DS Structure: 5448-077      116 W 12TH ST      Dir Televised: Upstream To Downstream

19	165.0	East	Wye Service	1	0.000	0	0	0.000
	1315 N main							
20	171.0		OH	1	0.000	0	0	0.000
21	188.0	West	Wye Service	3	0.000	2	0	0.000
	Sealed off / DEBRIS							
22	190.0	East	Wye Service	2	0.000	0	0	0.000
	ROOTS 1307 NORTH MAIN							
23	192.0		Other	1	0.000	0	0	0.000
	POINT REPAIR MADE							
24	202.0	Start	Sag Begins	3	0.000	5	0	0.000
25	209.0	Crown	Other	3	0.000	0	0	0.000
	POINT REPAIR MADE HAS BROKEN PIPE							
26	213.0	West	Wye Service	1	0.000	0	0	0.000
	1308 N Wellington							
27	216.0	East	Wye Service	1	0.000	0	0	0.000
	1305 N Main							
28	216.0	Camera Lens Emerged	Sag	4	0.000	10	0	0.000
29	219.0	Camera Lens Submerged	Sag	3	0.000	5	0	0.000
30	223.0	Camera Lens Emerged	Sag	3	0.000	5	0	0.000
31	237.0	Camera Lens Submerged	Sag	2	0.000	2	0	0.000
32	241.0	West	Wye Service	1	0.000	0	0	0.000
	1304 N Wellington							
33	243.0	East	Wye Service	1	0.000	0	0	0.000
	112 W 12th							
34	249.0	End	Sag	1	0.000	1	0	0.000
35	267.0	West	Break-In Conn	1	0.001	0	0	0.001
	PVC / 1302 Wellington							
36	267.0		Grease	2	0.000	0	0	0.000
37	269.0	East	Wye Service	1	0.000	0	0	0.000
	NO HOUSE AT THIS LOT APPEARS ABANDON / not sealed at the main							
38	280.0	West	Break-In Conn	1	0.001	0	0	0.001
	116 W 12 <sup>th</sup> / PVC							
	286.0	West	Wye					
	TELEVISOR DID NOT STOP TO LOOK AT IT							
39	288.0		Grease	4	0.000	0	10	0.000
40	290.0	East	Sealed Off Wye East	3	0.003	0	0	0.003
	DEBRIS							
41	291.0	Camera Lens Emerged	Sag	4	0.000	10	0	0.000
42	292.0	DS Manhole 5448-077		4	0.000	0	0	0.000

INFILTRATION FROM MANHOLE WALL

# Television Inspection Master Report

7/24/2007  
1:45 PM

**US Structure:** 5448-084E (capped end of pipe) **Date Insp:** 2/6/2007 **Basin:** C03D  
**DS Structure:** 5448-076 116 W 12TH ST **Dir Televised:** Upstream To Downstream

## Pipe Information

Shape: Round Length Status: Project No.: A-085  
 Dia/Ht Width: 8 Material: VCP Index:  
 Length: 97.8 Slope: 1.020 Surface:

## Inspection Information

Crew: 694 Percent Full: Tape ID: DVD #0245  
 Weather: Sunny Purpose: TV Existing Line Counter Start:

Obs. #	VTR Counter	Distance	Location	Description	Rating	Obsrvd (gpm)	Est. (gpm)	Ratings Struct	Clean	Remain (gpm)
1		0.0		<b>UPSTREAM END</b> (sealed-off end of pipe) (no visible structure at surface) OBSERVATION FOOTAGES ARE FROM UPSTREAM END TO DSMH (STARTING HERE AND PULLING CAMERA BACKWARDS, WITH THE FLOW						
2		1.4		Sealed Off Wye South CRACKED SEAL AND DEBRIS	3		0.003	0	0	0.003
3		3.5	North	Break-In Conn This is not sealed off at the main / NEED TO VERIFY IF THIS IS ACTIVE OR NOT / Televisor does not think this is active Possible connection for a building at 1301 N. Main	1		0.001	0	0	0.001
4		13.0	South	Sealed Off Wye CRACKED SEAL	1		0.000	0	0	0.000
5		35.0	South	Sealed Off Wye South CRACKED SEAL	2		0.002	0	0	0.002
6		38.0	Joint	Offset	3		0.010	20	0	0.010
7		58.0	South	Sealed Off Wye North ROOTS	3		0.003	0	0	0.003
8		61.0	Joint	Offset	3		0.010	20	0	0.010
9		82.0		PVC begins	1		0.000	0	0	0.000
10		84.0		PVC ends	1		0.000	0	0	0.000
11		96.0	DS Manhole	# 076 SAG IN MANHOLE DUE TO HIGH VOLME OF FLOW FROM 1234 NORTH WELLINGTON BUILDING	3		0.000	0	0	0.000

If it is discovered that 1301 N. Main is not tapped to this line segment at 93' east of MH 5448-076, then Contractor may eliminate this segment when reconstructing Manhole 5448-076. Staff will do further research and try to have that pinned down by the time of construction.

1-5