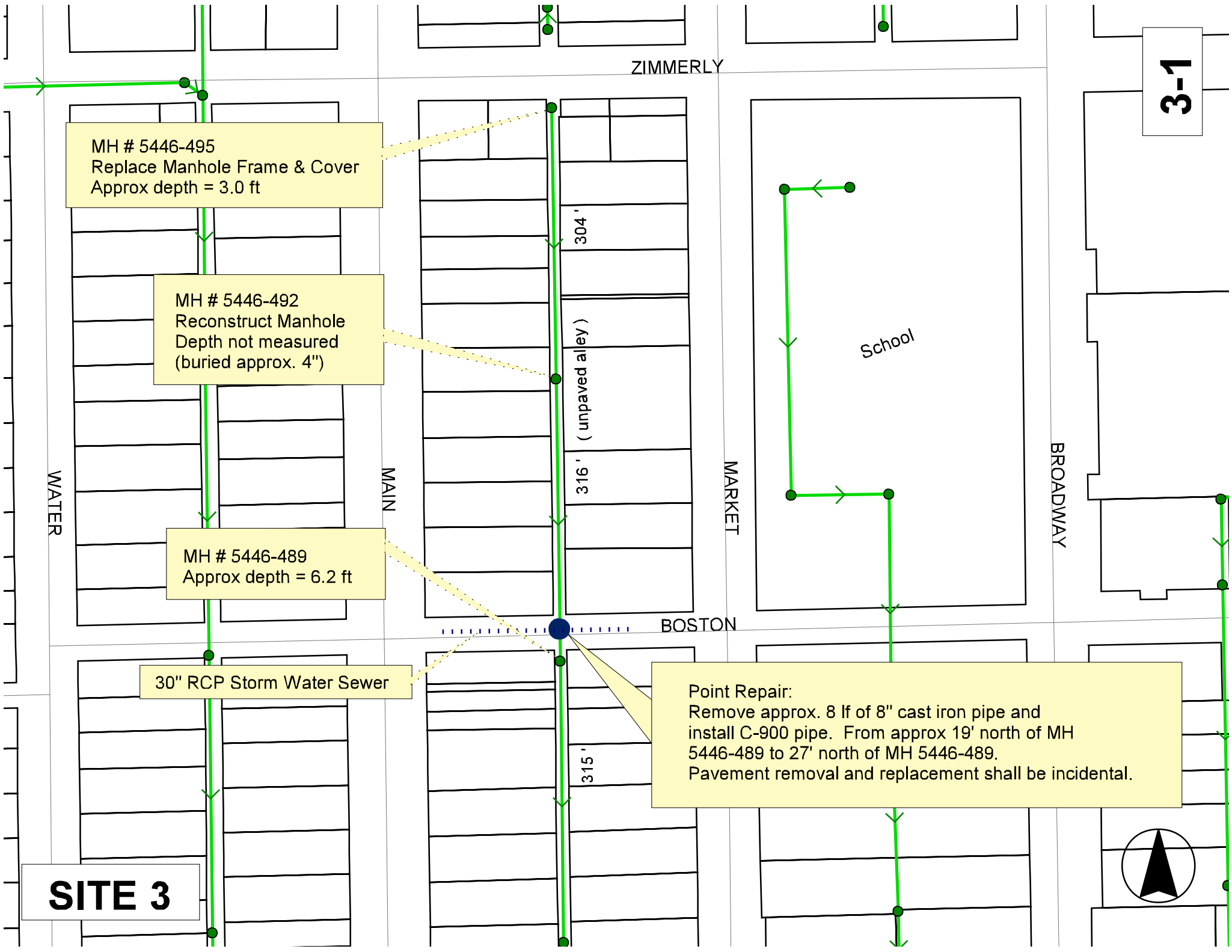


SITE 3

3-1



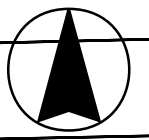
MH # 5446-495
Replace Manhole Frame & Cover
Approx depth = 3.0 ft

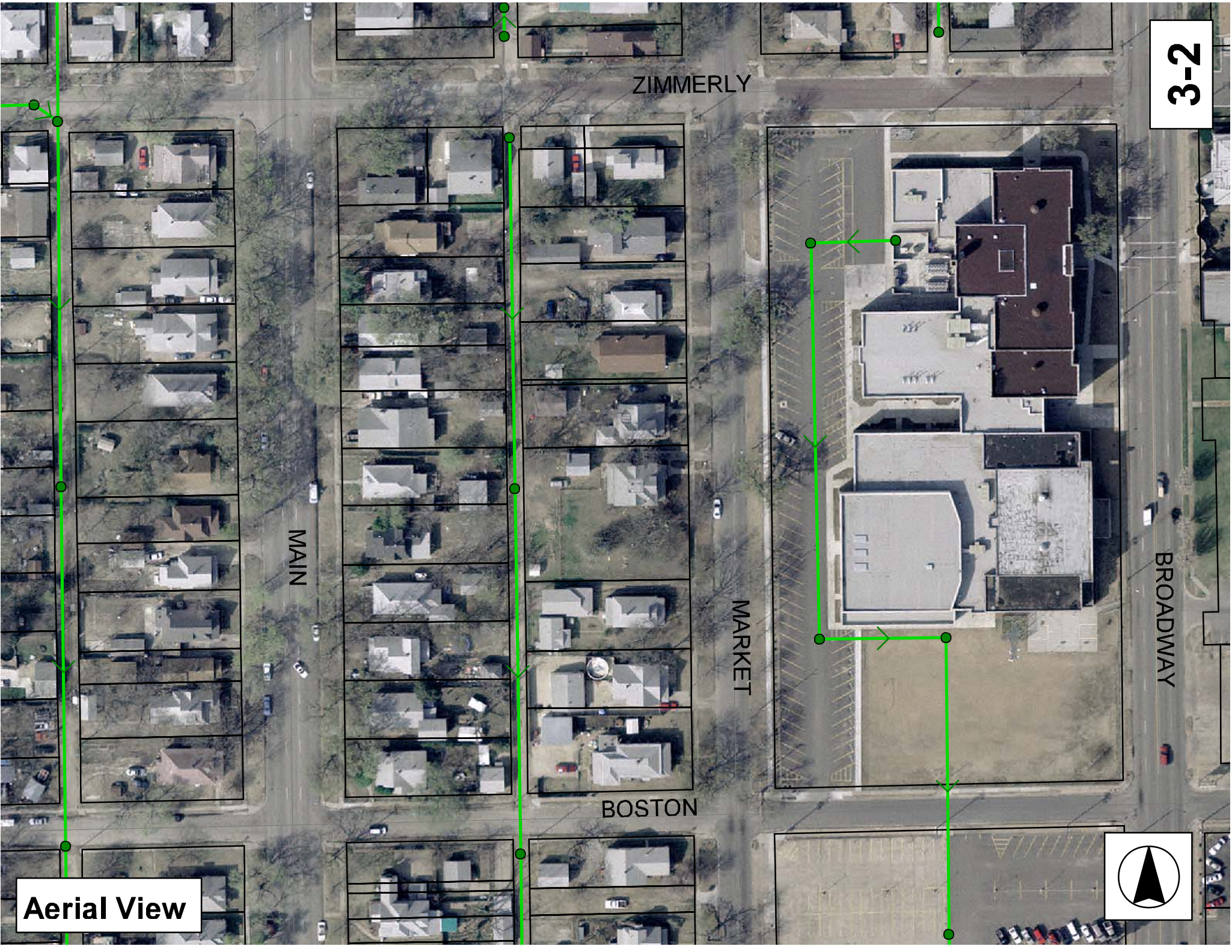
MH # 5446-492
Reconstruct Manhole
Depth not measured
(buried approx. 4")

MH # 5446-489
Approx depth = 6.2 ft

30" RCP Storm Water Sewer

Point Repair:
Remove approx. 8 lf of 8" cast iron pipe and
install C-900 pipe. From approx 19' north of MH
5446-489 to 27' north of MH 5446-489.
Pavement removal and replacement shall be incidental.





Aerial View



Television Inspection Master Report

7/9/2007
3:09 PM

US Structure: 5446-495
DS Structure: 5446-492

123 E ZIMMERLY ST
1425 S MARKET ST

Date Insp: 7/20/2004 Basin: C05C
Dir Televised: Upstream To Downstream

Pipe Information

Shape: Round Length Status: VCP Project No.: A-007
Dia/Ht Width: 8 Material: Index:
Length: 304.0 Slope: 0.401 Surface:

Inspection Information

Crew: 694 Percent Full: 10 Tape ID: V-4446
Weather: Sunny Purpose: TV Existing Line Counter Start:
Surface Cond: N/A Flow: Normal Flow Counter Stop:

Obs. #	VTR Counter	Distance	Location	Description	Rating	Obsrvd (gpm)	Est. (gpm)	Ratings Struct	Clean	Remain (gpm)
1		0.0	US Manhole	5446-495						0.000
2		3.0	Joint	Crack-Radial	3		0.004	5	0	0.004
3		7.5	East	Wye Service	2		0.000	0	0	0.000
SEALED OFF										
4		9.0	Crown	Crack-Horizontal	4		0.008	10	0	0.008
5		10.9	Crown	Crack-Horizontal	3		0.004	5	0	0.004
6		12.9	Crown	Crack-Horizontal	3		0.004	5	0	0.004
7		14.4	Quad 4 / U-Lt	Crack-Horizontal	2		0.002	2	0	0.002
8		15.0	Crown	Crack-Horizontal	2		0.002	2	0	0.002
9		23.3	East	Break-In Conn	5		0.010	400	0	0.010
123 E ZIMMERLY										
10		24.8	Joint	Crack-Radial	3		0.004	5	0	0.004
11		26.6	West	Wye Service						0.000
SEALED OFF										
12		27.3	Quad 1 / U-Rt	Broken Pipe	4		0.030	78	0	0.030
CHIP OUT OF TILE AT JOINT										
13		28.8	East	Wye Service						0.000
1401 S MARKET										
14		43.2	Joint	Crack-Radial	1		0.001	1	0	0.001
15		49.5	Crown	Crack-Horizontal	2		0.002	2	0	0.002
16		52.9	West	Wye Service	4		0.000	60	0	0.000
109/111 E. ZIMMERLY										
17		55.2	East	Wye Service	2		0.000	0	0	0.000
SEALED OFF										
18		63.4	West	Wye Service	2		0.000	0	0	0.000
1402 S MAIN										
19		75.7	East	Break-In Conn	4		0.008	60	0	0.008
1409 S MARKET										
20		77.3	West	Wye Service	2		0.000	0	0	0.000
1406 S MAIN										
21		79.3	East	Wye Service	2		0.000	0	0	0.000
SEALED OFF										

Television Inspection Master Report

7/9/2007
3:09 PM

US Structure: 5446-495 123 E ZIMMERLY ST Date Insp: 7/20/2004 Basin: C05C
DS Structure: 5446-492 1425 S MARKET ST Dir Televised: Upstream To Downstream

22	87.6	Crown	Crack-Horizontal	4	0.008	10	0	0.008
23	89.4	Crown	Observation Hole	5	0.000	0	0	0.000
24	89.4	Crown	Crack-Horizontal	5	0.010	18	0	0.010
25	99.7	Quad 1 / U-Rt	Broken Pipe	4	0.030	78	0	0.030
26	103.7	West	Wye Service	4	0.000	60	0	0.000
SEALED OFF								
27	105.8	East	Wye Service	1	0.000	0	0	0.000
SEALED OFF								
28	110.8	Joint	Crack-Radial	2	0.002	2	0	0.002
29	122.5	Invert	Sag	4	0.000	10	0	0.000
10% FLOW								
30	127.8	West	Wye Service	4	0.000	60	0	0.000
1412 S MAIN								
31	128.1	Joint	Crack-Radial	2	0.002	2	0	0.002
32	130.0	East	Wye Service	4	0.000	60	0	0.000
SEALED OFF								
33	133.2	Invert	Sag	2	0.000	2	0	0.000
OUT OF SAG								
34	151.9	West	Wye Service	2	0.000	0	0	0.000
SEALED OFF								
35	154.2	East	Wye Service	1	0.000	0	0	0.000
1419 S MARKET / debris in service								
36	155.6	DS Manhole	Crack-Radial					0.000
37	156.4	Invert	Crack-Horizontal	2	0.002	2	0	0.002
38	162.1	East	Wye Service	5	0.000	400	0	0.000
1419 S MARKET / debris in service (sand or dirt) not sealed at the main, but possibly abandoned								
39	168.4	Quad 1 / U-Rt	Crack-Horizontal	2	0.002	2	0	0.002
40	170.0	Crown	Crack-Horizontal	2	0.002	2	0	0.002
41	172.0	Crown	Crack-Horizontal	3	0.004	5	0	0.004
42	174.2	Crown	Crack-Horizontal	2	0.002	2	0	0.002
43	178.2	West	Wye Service	4	0.000	60	0	0.000
SEALED OFF								
44	180.2	East	Wye Service	1	0.000	0	0	0.000
SEALED OFF								
45	189.0	Quad 2 / L-Rt	Broken Pipe	4	0.030	78	0	0.030
CHIP OUT OF TILE AT JOINT								
46	192.3	Joint	Crack-Radial	2	0.002	2	0	0.002
47	196.4	Crown	Crack-Horizontal	2	0.002	2	0	0.002
48	198.0	Crown	Other	2	0.000	0	0	0.000
O.H.								
49	203.9	West	Wye Service	4	0.000	60	0	0.000
1424 S MAIN								
50	204.5	East	Break-In Conn	2	0.002	0	0	0.002
1421 S MARKET / PVC								

Television Inspection Master Report

7/9/2007
3:09 PM

US Structure: 5446-495 123 E ZIMMERLY ST **Date Insp:** 7/20/2004 **Basin:** C05C
DS Structure: 5446-492 1425 S MARKET ST **Dir Televised:** Upstream To Downstream

51	212.5	Crown	Crack-Horizontal	2	0.002	2	0	0.002
52	218.3	Invert	Sag	2	0.000	2	0	0.000
10% FLOW								
53	228.4	West	Wye Service	4	0.000	60	0	0.000
SEALED OFF								
54	230.8	East	Wye Service	2	0.000	0	0	0.000
SEALED OFF								
55	244.5	Quad 4 / U-Lt	Broken Pipe	1	0.004	30	0	0.004
56	246.9		Crack-Radial					0.000
57	248.8	Crown	Crack-Horizontal	1	0.001	1	0	0.001
58	252.7	West	Wye Service	2	0.000	0	0	0.000
1430 S MAIN								
59	254.8	East	Wye Service	2	0.000	0	0	0.000
1423 S MARKET								
60	257.4	Quad 4 / U-Lt	Crack-Horizontal	2	0.002	2	0	0.002
61	259.0	Crown	Crack-Horizontal	2	0.002	2	0	0.002
62	261.2	Crown	Crack-Horizontal	4	0.008	10	0	0.008
63	265.2	Crown	Crack-Horizontal	2	0.002	2	0	0.002
64	278.9	West	Wye Service	2	0.000	0	0	0.000
SEALED OFF								
65	280.9	East	Wye Service	2	0.000	0	0	0.000
SEALED OFF								
66	293.3	Joint	Crack-Radial	2	0.002	2	0	0.002
67	301.4	West	Wye Service	2	0.000	0	0	0.000
1432 S MAIN								
68	303.4	East	Wye Service	5	0.000	400	0	0.000
SEALED OFF								
69	303.4	Crown	Crack-Horizontal	2	0.002	2	0	0.002
70	308.2	DS Manhole	5446-492					0.000

Manhole is buried approx 4" in gravel. Not inspected. Per TV tape, trough of manhole is brick and in very poor condition.

Television Inspection Master Report

7/9/2007
3:09 PM

US Structure: 5446-492
DS Structure: 5446-489

1425 S MARKET ST
1501 S MARKET ST

Date Insp: 7/23/2004
Dir Televised: Upstream To Downstream

Basin: C05C

Pipe Information

Shape: Round Length Status: VCP Project No.: A-007
Dia/Ht Width: 8 Material: Index:
Length: 316.0 Slope: 0.399 Surface:

Inspection Information

Crew: 694 Percent Full: 10 Tape ID: V-4446
Weather: Rainy Purpose: TV Existing Line Counter Start:
Surface Cond: N/A Flow: Normal Flow Counter Stop:

Obs. #	VTR Counter Comment	Distance	Location	Description	Rating	Obsrvd (gpm)	Est. (gpm)	Ratings		
								Struct	Clean	Remain (gpm)
1		0.0	US Manhole	5446-492						0.000
	Manhole is buried approx 4" in gravel. Not inspected. Per TV tape, trough of manhole is brick and in very poor condition.									
2		5.1	Quad 1 / U-Rt	Crack-Horizontal	4	0.008	10	0	0	0.008
3		21.2	West	Wye Service	2	0.000	0	0	0	0.000
	SEALED OFF									
4		23.3	East	Wye Service	2	0.000	0	0	0	0.000
	1425 S MARKET									
5		40.0	Quad 4 / U-Lt	Crack-Horizontal	4	0.008	10	0	0	0.008
6		42.1	Quad 1 / U-Rt	Crack-Horizontal	4	0.008	10	0	0	0.008
7		45.9	West	Wye Service	2	0.000	0	0	0	0.000
	1438 S MARKET									
8		47.9	East	Wye Service	2	0.000	0	0	0	0.000
	SEALED OFF									
9		49.4	Quad 4 / U-Lt	Crack-Horizontal	4	0.008	10	0	0	0.008
10		50.3	Crown	Crack-Horizontal	4	0.008	10	0	0	0.008
11		52.4	Quad 1 / U-Rt	Crack-Horizontal	4	0.008	10	0	0	0.008
12		54.2	Quad 2 / L-Rt	Crack-Horizontal	4	0.008	10	0	0	0.008
13		56.1	Quad 3 / L-Lt	Crack-Radial	4	0.008	10	0	0	0.008
14		70.1	Crown	Crack-Radial	4	0.008	10	0	0	0.008
15		72.0	Quad 1 / U-Rt	Wye Service	2	0.000	0	0	0	0.000
	SEALED OFF									
16		73.9	Quad 4 / U-Lt	Wye Service	2	0.000	0	0	0	0.000
	SEALED OFF									
17		94.7	Quad 1 / U-Rt	Broken Pipe	4	0.030	78	0	0	0.030
	QUADS 1 & 2									
18		96.3	West	Wye Service	2	0.000	0	0	0	0.000
	1440 S MAIN									
19		98.2	Quad 4 / U-Lt	Wye Service	2	0.000	0	0	0	0.000
	SEALED OFF									
20		106.8	Quad 4 / U-Lt	Broken Pipe	4	0.030	78	0	0	0.030
21		116.0	East	Wye Service	1	0.000	0	0	0	0.000
	1439 S MARKET / FULL OF ROOTS									
22		118.7	Invert	Crack-Radial	4	0.008	10	0	0	0.008
23		120.2	Quad 1 / U-Rt	Wye Service	2	0.000	0	0	0	0.000
	SEALED OFF									

Television Inspection Master Report

7/9/2007
3:09 PM

US Structure: 5446-492 1425 S MARKET ST Date Insp: 7/23/2004 Basin: C05C
DS Structure: 5446-489 1501 S MARKET ST Dir Televised: Upstream To Downstream

24	120.9	Quad 1 / U-Rt	Crack-Radial	4	0.008	10	0	0.008
25	122.9	Quad 3 / L-Lt	Wye Service	2	0.000	0	0	0.000
26	123.4	East	Wye Service	1	0.000	0	0	0.000
1437 S MARKET / ROOTS								
27	146.7	West	Break-In Conn	2	0.002	0	0	0.002
1446 S MAIN								
28	149.0	East	Wye Service	2	0.000	0	0	0.000
1441 S MARKET								
29	167.3	Quad 3 / L-Lt	Crack-Horizontal	4	0.008	10	0	0.008
30	167.4	Quad 4 / U-Lt	Crack-Horizontal	4	0.008	10	0	0.008
31	171.2	West	Wye Service	2	0.000	0	0	0.000
SEALED OFF								
32	173.3	East	Wye Service	2	0.000	0	0	0.000
SEALED OFF								
33	178.0	Quad 3 / L-Lt	Crack-Horizontal	4	0.008	10	0	0.008
34	197.6	West	Wye Service	2	0.000	0	0	0.000
1450 S MAIN								
35	199.4	Quad 4 / U-Lt	Wye Service	2	0.000	0	0	0.000
SEALED OFF								
36	213.7	Crown	Observation Hole					
37	223.5	East	Wye Service	2	0.000	0	0	0.000
1445 S MARKET / GAP AROUND CONNECTION								
38	225.5	East	Wye Service	2	0.000	0	0	0.000
1445 S MARKET								
39	226.5	Quad 1 / U-Rt	Broken Pipe	5	0.060	100	0	0.060
TILE IS GONE								
40	250.0	Quad 1 / U-Rt	Wye Service	2	0.000	0	0	0.000
1452 S MAIN								
41	252.4	Quad 4 / U-Lt	Wye Service	2	0.000	0	0	0.000
SEALED OFF								
42	259.2	Quad 4 / U-Lt	Broken Pipe	4	0.030	78	0	0.030
43	274.3	Quad 1 / U-Rt	Wye Service	2	0.000	0	0	0.000
SEALED OFF								
44	276.4	Quad 4 / U-Lt	Wye Service	2	0.000	0	0	0.000
SEALED OFF								
45	292.0	Joint	Other	4	0.000	0	0	0.000
PVC PIPE ENDS AND CAST IRON BEGINS / CAST IRON IS CORRODED / CAMERA CANNOT PASS.								

Television Inspection Master Report

7/9/2007
3:09 PM

REVERSE SETUP:

US Structure: 5446-492 1425 S MARKET ST **Date Insp:** 7/23/2004 **Basin:** C05C
DS Structure: 5446-489 1501 S MARKET ST **Dir Televised:** Downstream To Upstream

Obs. #	VTR Counter	Distance	Location	Description	Rating	Obsrvd (gpm)	Est. (gpm)	Ratings Struct	Clean	Remain (gpm)
1		0.0	DS Manhole	5446-489						0.000
2		19.0	East	1501 S MARKET / <u>WE ARE TELEVISIONING AGAINST THE FLOW</u> Wye Service	2		0.000	0	0	0.000
3		20.7	West	SEALED OFF Wye Service	2		0.000	0	0	0.000
4		20.7	Joint	SEALED OFF Other	4		0.000	0	0	0.000
5		22.3	Joint	PIPE CHANGES FROM VCP TO CAST-IRON Other	4		0.000	0	0	0.000
THE CAMERA WILL NOT PASS THRU THIS CAST-IRON PIPE.										

NOTE:

Records indicate that the 30" SWS is lower than the sanitary sewer.
There is no mention of concrete encasement on the sanitary sewer.